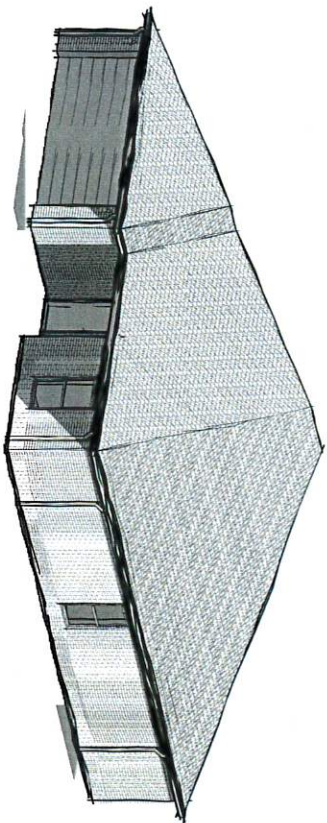


CHEROKEE NATION TAHLEQUAH HOUSING DEVELOPMENT CONSTRUCTION DOCUMENTS

8/18/22
TYPE 4



1-5 REPRESENTATION FOR ILLUSTRATIVE PURPOSES ONLY. REFER TO DRAWINGS AND DETAILS.

PROJECT CONTACTS	
OWNER	ARCHITECT
CHEROKEE NATION 1000 EAST MAIN STREET PO BOX 1000 TAHLEQUAH, TN 37576	BLUERIVER ARCHITECTS, LLC 1000 EAST MAIN STREET PO BOX 1000 TAHLEQUAH, TN 37576
CONTRACTOR	
CONSULTANT CONTACTS	
GEOTECHNICAL CONSULTANT	STRUCTURAL CONSULTANT
WALTON ENGINEERING 1000 EAST MAIN STREET PO BOX 1000 TAHLEQUAH, TN 37576	WALTON ENGINEERING 1000 EAST MAIN STREET PO BOX 1000 TAHLEQUAH, TN 37576
ENVIRONMENTAL CONSULTANT	
WATER RESOURCES CONSULTANT	

PROJECT LOCATION	
ADDRESS HERE	

SHEET INDEX	
GENERAL	ELECTRICAL
010 GENERAL NOTES	010 TYPE 4 ELECTRICAL PLAN
020 FLOOR FINISHES	
030 ROOF FINISHES	
040 EXTERIOR WALL FINISHES	
050 INTERIOR WALL FINISHES	
060 CEILING FINISHES	
070 MECHANICAL SYSTEMS	
080 PLUMBING SYSTEMS	
090 HVAC SYSTEMS	
100 LIGHTING SYSTEMS	
110 FINISHES	
120 SCHEDULES	
130 MECHANICAL SCHEDULES	
140 PLUMBING SCHEDULES	
150 ELECTRICAL SCHEDULES	
160 FINISH SCHEDULES	
170 SCHEDULES	
180 SCHEDULES	
190 SCHEDULES	
200 SCHEDULES	
210 SCHEDULES	
220 SCHEDULES	
230 SCHEDULES	
240 SCHEDULES	
250 SCHEDULES	
260 SCHEDULES	
270 SCHEDULES	
280 SCHEDULES	
290 SCHEDULES	
300 SCHEDULES	
310 SCHEDULES	
320 SCHEDULES	
330 SCHEDULES	
340 SCHEDULES	
350 SCHEDULES	
360 SCHEDULES	
370 SCHEDULES	
380 SCHEDULES	
390 SCHEDULES	
400 SCHEDULES	
410 SCHEDULES	
420 SCHEDULES	
430 SCHEDULES	
440 SCHEDULES	
450 SCHEDULES	
460 SCHEDULES	
470 SCHEDULES	
480 SCHEDULES	
490 SCHEDULES	
500 SCHEDULES	

blueriver
ARCHITECTS

1000 EAST MAIN STREET
TAHLEQUAH, TN 37576
PH: 423.639.1234
WWW.BLUERIVERARCHITECTS.COM

CHEROKEE NATION TAHLEQUAH HOUSING DEVELOPMENT - TYPE 4

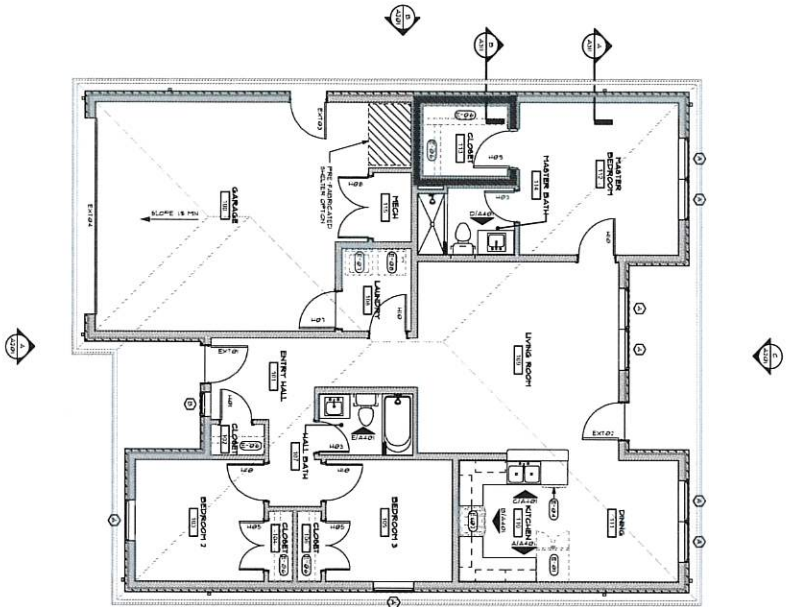
ADDRESS HERE

CS
COVER SHEET

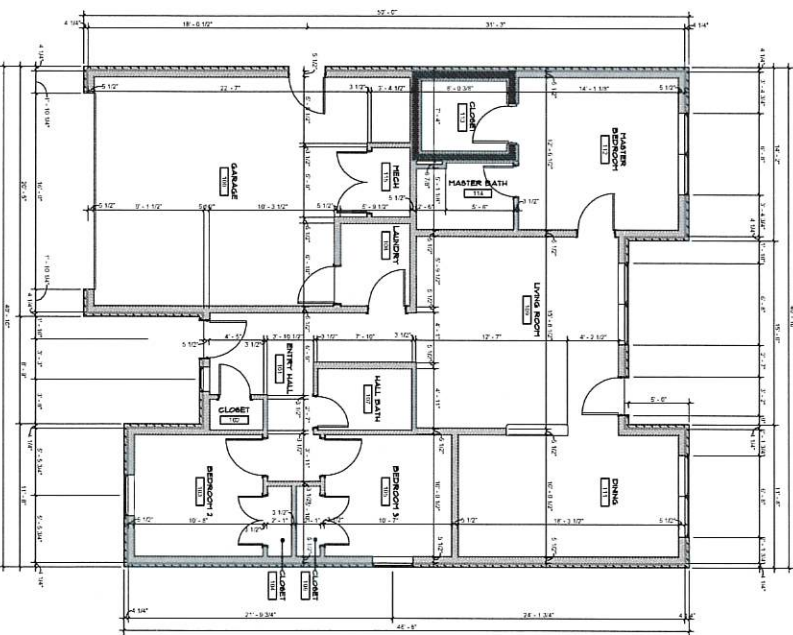
blueriver
ARCHITECTS

1000 EAST MAIN STREET
TAHLEQUAH, TN 37576
PH: 423.639.1234
WWW.BLUERIVERARCHITECTS.COM

CS
COVER SHEET



B FIRST FLOOR REFERENCE PLAN
1/4" = 1'-0"



A FIRST FLOOR DIMENSION PLAN
1/4" = 1'-0"



**CHEROKEE NATION TAHLEQUAH HOUSING
DEVELOPMENT - TYPE 4**

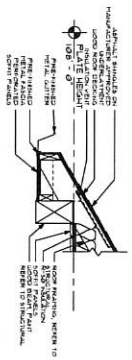
ADDRESS HERE
A101
FLOOR PLANS

blueriver
ARCHITECTS
ARCHITECTS

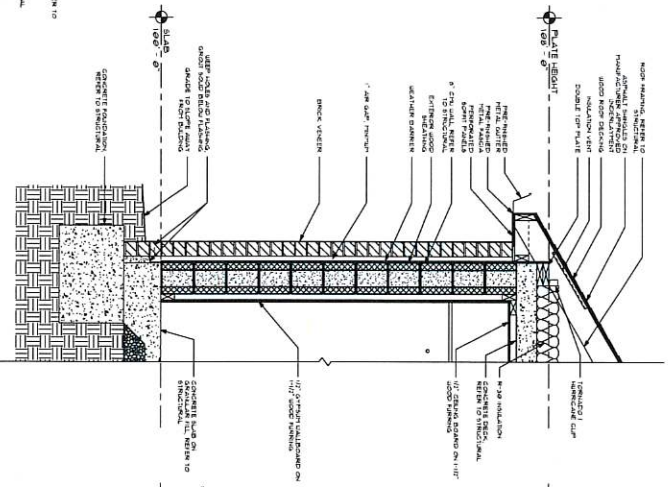
2022/01/04
3022/01/04
CONSTRUCTION
DOCUMENTS
SHEET NO. 1001
DATE: 01/04/2022

FLOOR PLANS

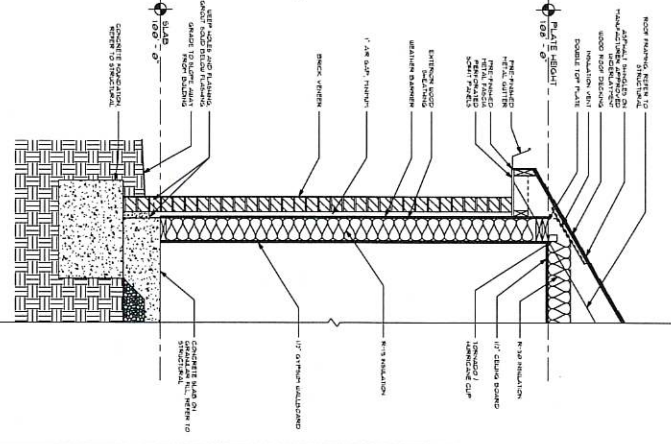
A101



C WALL SECTION
1" = 8"



B WALL SECTION
1" = 8"



A WALL SECTION
1" = 8"



**CHEROKEE NATION TAHLEQUAH HOUSING
DEVELOPMENT - TYPE 4**

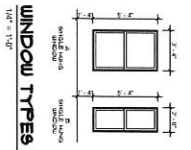
ADDRESS HERE
A311
WALL SECTIONS

blueriver
ARCHITECTS
10000
10/18/2012

20220114
CONSTRUCTION
DOCUMENTS
SHEET 12 OF 12

A311
WALL SECTIONS

A311



DOOR SCHEDULE ABBREVIATIONS

A	ALUMINUM	NO	NO. OF GLASS
FR	FRAMING	GR	GRASSHOPPER
HT	HOLLOW METAL	LD	LOAD
SI	SIBEL	SD	SLIP DOOR

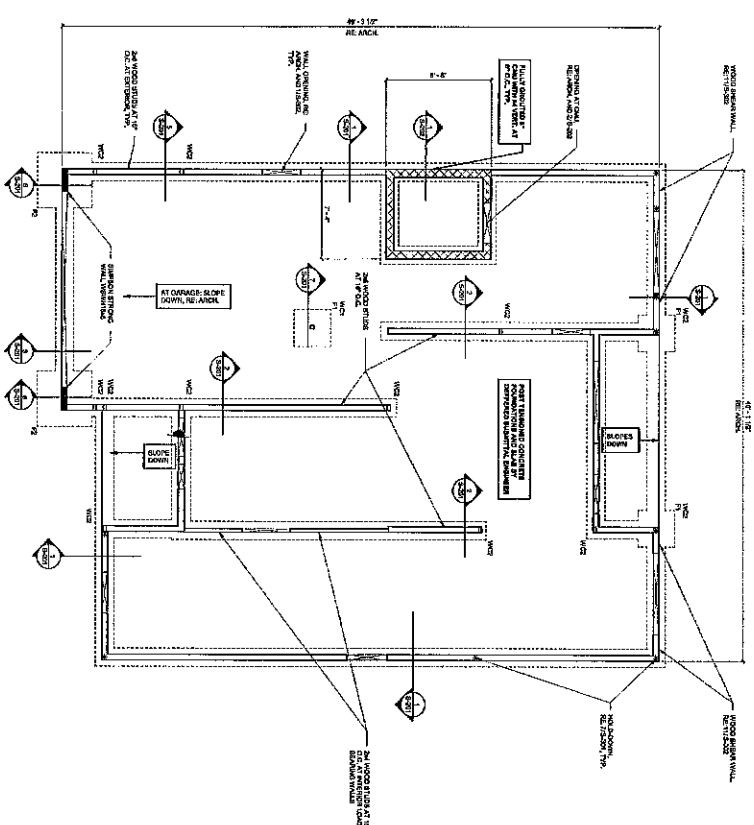
DOOR SCHEDULE

NO.	SYMBOL	DESCRIPTION	FINISH	GLASS	GLASS TYPE	GLASS SIZE	GLASS WEIGHT	GLASS AREA	GLASS WEIGHT	GLASS AREA	GLASS WEIGHT	GLASS AREA	GLASS WEIGHT	GLASS AREA	GLASS WEIGHT	GLASS AREA	GLASS WEIGHT	GLASS AREA	GLASS WEIGHT	GLASS AREA
1	FR-1	FRAMING	FR-1																	
2	FR-2	FRAMING	FR-2																	
3	FR-3	FRAMING	FR-3																	
4	FR-4	FRAMING	FR-4																	
5	FR-5	FRAMING	FR-5																	
6	FR-6	FRAMING	FR-6																	
7	FR-7	FRAMING	FR-7																	
8	FR-8	FRAMING	FR-8																	
9	FR-9	FRAMING	FR-9																	
10	FR-10	FRAMING	FR-10																	
11	FR-11	FRAMING	FR-11																	
12	FR-12	FRAMING	FR-12																	
13	FR-13	FRAMING	FR-13																	
14	FR-14	FRAMING	FR-14																	
15	FR-15	FRAMING	FR-15																	
16	FR-16	FRAMING	FR-16																	
17	FR-17	FRAMING	FR-17																	
18	FR-18	FRAMING	FR-18																	
19	FR-19	FRAMING	FR-19																	
20	FR-20	FRAMING	FR-20																	
21	FR-21	FRAMING	FR-21																	
22	FR-22	FRAMING	FR-22																	
23	FR-23	FRAMING	FR-23																	
24	FR-24	FRAMING	FR-24																	
25	FR-25	FRAMING	FR-25																	
26	FR-26	FRAMING	FR-26																	
27	FR-27	FRAMING	FR-27																	
28	FR-28	FRAMING	FR-28																	
29	FR-29	FRAMING	FR-29																	
30	FR-30	FRAMING	FR-30																	
31	FR-31	FRAMING	FR-31																	
32	FR-32	FRAMING	FR-32																	
33	FR-33	FRAMING	FR-33																	
34	FR-34	FRAMING	FR-34																	
35	FR-35	FRAMING	FR-35																	
36	FR-36	FRAMING	FR-36																	
37	FR-37	FRAMING	FR-37																	
38	FR-38	FRAMING	FR-38																	
39	FR-39	FRAMING	FR-39																	
40	FR-40	FRAMING	FR-40																	
41	FR-41	FRAMING	FR-41																	
42	FR-42	FRAMING	FR-42																	
43	FR-43	FRAMING	FR-43																	
44	FR-44	FRAMING	FR-44																	
45	FR-45	FRAMING	FR-45																	
46	FR-46	FRAMING	FR-46																	
47	FR-47	FRAMING	FR-47																	
48	FR-48	FRAMING	FR-48																	
49	FR-49	FRAMING	FR-49																	
50	FR-50	FRAMING	FR-50																	
51	FR-51	FRAMING	FR-51																	
52	FR-52	FRAMING	FR-52																	
53	FR-53	FRAMING	FR-53																	
54	FR-54	FRAMING	FR-54																	
55	FR-55	FRAMING	FR-55																	
56	FR-56	FRAMING	FR-56																	
57	FR-57	FRAMING	FR-57																	
58	FR-58	FRAMING	FR-58																	
59	FR-59	FRAMING	FR-59																	
60	FR-60	FRAMING	FR-60																	
61	FR-61	FRAMING	FR-61																	
62	FR-62	FRAMING	FR-62																	
63	FR-63	FRAMING	FR-63																	
64	FR-64	FRAMING	FR-64																	
65	FR-65	FRAMING	FR-65																	
66	FR-66	FRAMING	FR-66																	
67	FR-67	FRAMING	FR-67																	
68	FR-68	FRAMING	FR-68																	
69	FR-69	FRAMING	FR-69																	
70	FR-70	FRAMING	FR-70																	
71	FR-71	FRAMING	FR-71																	
72	FR-72	FRAMING	FR-72																	
73	FR-73	FRAMING	FR-73																	
74	FR-74	FRAMING	FR-74																	
75	FR-75	FRAMING	FR-75																	
76	FR-76	FRAMING	FR-76																	
77	FR-77	FRAMING	FR-77																	
78	FR-78	FRAMING	FR-78																	
79	FR-79	FRAMING	FR-79																	
80	FR-80	FRAMING	FR-80																	
81	FR-81	FRAMING	FR-81																	
82	FR-82	FRAMING	FR-82																	
83	FR-83	FRAMING	FR-83																	
84	FR-84	FRAMING	FR-84																	
85	FR-85	FRAMING	FR-85																	
86	FR-86	FRAMING	FR-86																	
87	FR-87	FRAMING	FR-87																	
88	FR-88	FRAMING	FR-88																	
89	FR-89	FRAMING	FR-89																	
90	FR-90	FRAMING	FR-90																	
91	FR-91	FRAMING	FR-91																	
92	FR-92	FRAMING	FR-92																	
93	FR-93	FRAMING	FR-93																	
94	FR-94	FRAMING	FR-94																	
95	FR-95	FRAMING	FR-95																	
96	FR-96	FRAMING	FR-96																	
97	FR-97	FRAMING	FR-97																	
98	FR-98	FRAMING	FR-98																	
99	FR-99	FRAMING	FR-99																	
100	FR-100	FRAMING	FR-100																	

ROOM FINISH SCHEDULE

NO.	SYMBOL	DESCRIPTION	FINISH	GLASS	GLASS TYPE	GLASS SIZE	GLASS WEIGHT	GLASS AREA	GLASS WEIGHT	GLASS AREA	GLASS WEIGHT	GLASS AREA	GLASS WEIGHT	GLASS AREA	GLASS WEIGHT	GLASS AREA	GLASS WEIGHT	GLASS AREA	GLASS WEIGHT	GLASS AREA
1	FR-1	FRAMING	FR-1																	
2	FR-2	FRAMING	FR-2																	
3	FR-3	FRAMING	FR-3																	
4	FR-4	FRAMING	FR-4																	
5	FR-5	FRAMING	FR-5																	
6	FR-6	FRAMING	FR-6																	
7	FR-7	FRAMING	FR-7																	
8	FR-8	FRAMING	FR-8																	
9	FR-9	FRAMING	FR-9																	
10	FR-10	FRAMING	FR-10																	

FOUNDATION PLAN - TYPE 4



- EXPLANATION OF SYMBOLS**
1. FOUNDATION WALLS
 2. FOUNDATION FOOTINGS
 3. CONCRETE FLOOR
 4. SLOPE SLOPE
 5. SLOPE SLOPE
 6. SLOPE SLOPE
 7. SLOPE SLOPE
 8. SLOPE SLOPE
 9. SLOPE SLOPE
 10. SLOPE SLOPE

THIS PLAN IS A PROFESSIONAL ARCHITECTURAL DESIGN AND IS NOT TO BE USED FOR CONSTRUCTION WITHOUT THE SIGNATURE AND SEAL OF A REGISTERED PROFESSIONAL ARCHITECT.

THIS FOUNDATION PLAN IS A PROFESSIONAL ARCHITECTURAL DESIGN AND IS NOT TO BE USED FOR CONSTRUCTION WITHOUT THE SIGNATURE AND SEAL OF A REGISTERED PROFESSIONAL ARCHITECT.



blue river
ARCHITECTS
A National Residence Design Firm

1234 SOMEWHERE STREET TOWN, STATE ZIP
S-104
TYPE 4 - FOUNDATION PLAN

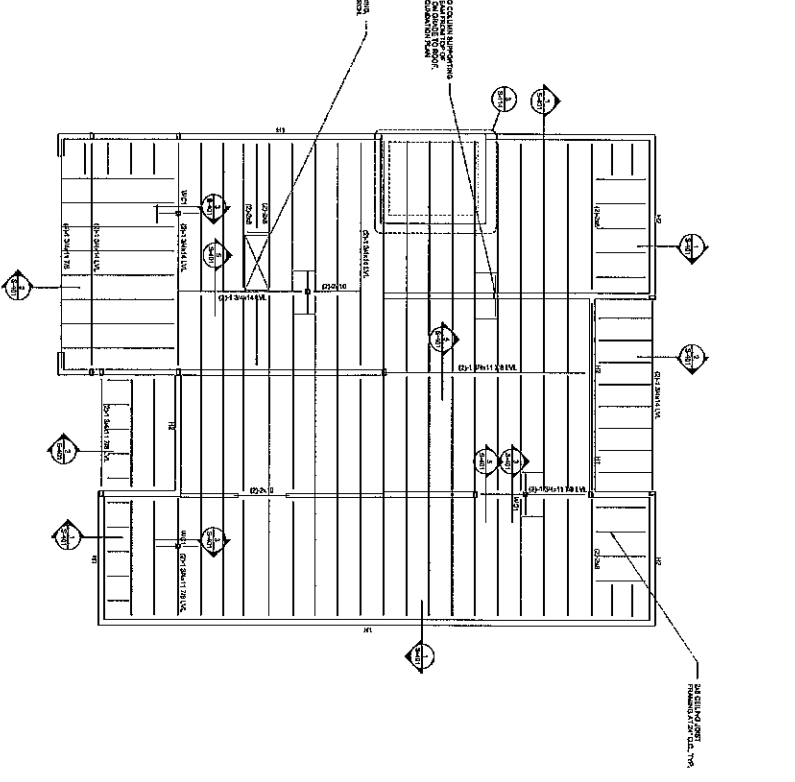
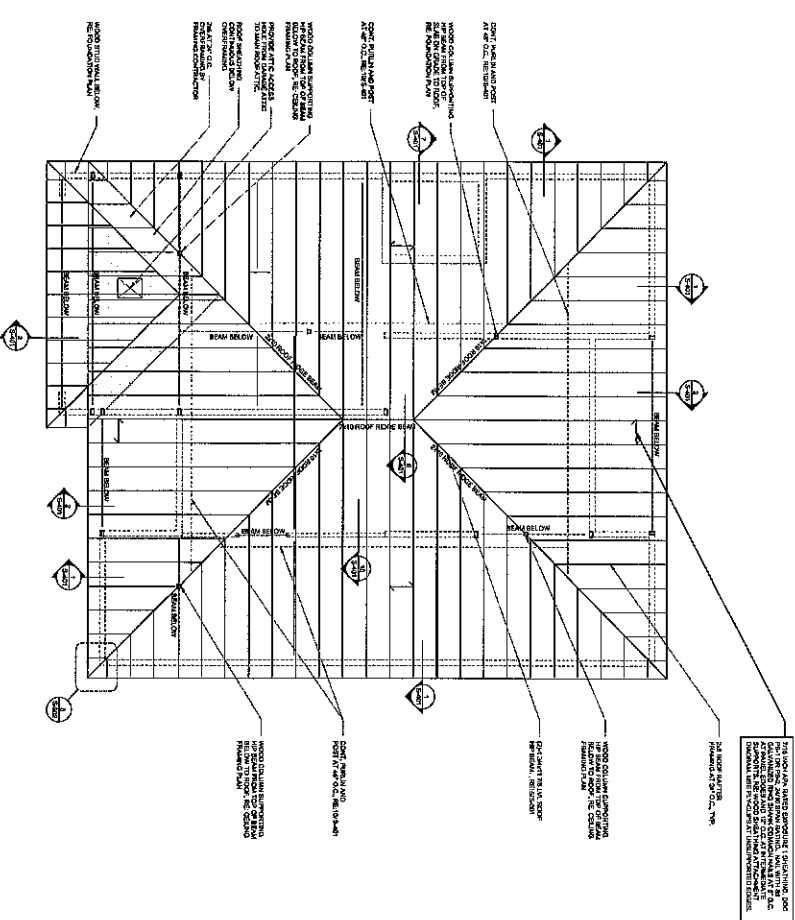
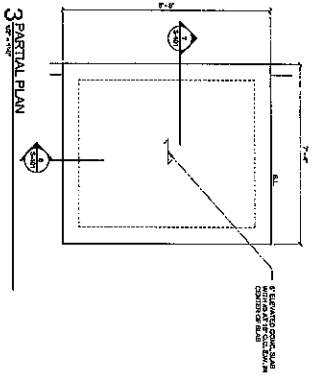
CHEROKEE NATION TALEQUAH HOUSING DEVELOPMENT - TYPES 1 TO 4
1234 SOMEWHERE STREET TOWN, STATE ZIP
S-104
TYPE 4 - FOUNDATION PLAN

blue river
ARCHITECTS
100% CONSTRUCTION DOCUMENTS
DATE: 12/15/2010

S-104
TYPE 4 - FOUNDATION PLAN

S-104

- ROOF ELEVATION DIMENSIONS**
1. REFER TO ARCHITECTURAL AND MECHANICAL DRAWINGS FOR SIZE AND LOCATION OF
 2. REFER TO ARCHITECTURAL AND MECHANICAL DRAWINGS FOR SIZE AND LOCATION OF
 3. REFER TO ARCHITECTURAL AND MECHANICAL DRAWINGS FOR SIZE AND LOCATION OF
 4. REFER TO ARCHITECTURAL AND MECHANICAL DRAWINGS FOR SIZE AND LOCATION OF



1-2 WALL EXHAUST/CHIMNEY JACK
REFERS TO ARCHIT. OR MECH. DRAWING

1-2 WALL EXHAUST/CHIMNEY JACK
REFERS TO ARCHIT. OR MECH. DRAWING

THIS DOCUMENT, DRAWING, SPECIFICATION, CONTRACTING DOCUMENTS, AND ALL INFORMATION CONTAINED HEREIN IS THE PROPERTY OF BLUE RIVER ARCHITECTS. IT IS TO BE USED ONLY FOR THE PROJECT AND SITE SPECIFICALLY IDENTIFIED HEREIN. ANY REUSE OR MODIFICATION OF THIS DOCUMENT WITHOUT THE WRITTEN PERMISSION OF BLUE RIVER ARCHITECTS IS STRICTLY PROHIBITED.

1-2 WALL EXHAUST/CHIMNEY JACK
REFERS TO ARCHIT. OR MECH. DRAWING

1-2 WALL EXHAUST/CHIMNEY JACK
REFERS TO ARCHIT. OR MECH. DRAWING

CHEROKEE NATION TALEQUAH HOUSING DEVELOPMENT - TYPES 1 TO 4

1234 SOMEWHERE STREET TOWN, STATE ZIP
S-114
TYPE 4 - CEILING FRAMING PLAN / ROOF FRAMING PLAN

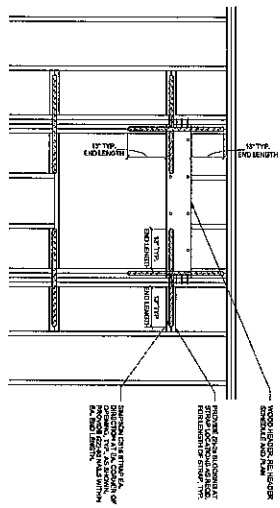
blueriver
ARCHITECTS
A Member of the Blue River Group

1234 SOMEWHERE STREET
TOWN, STATE ZIP
PHONE: (555) 555-5555
WWW.BLUERIVERARCHITECTS.COM

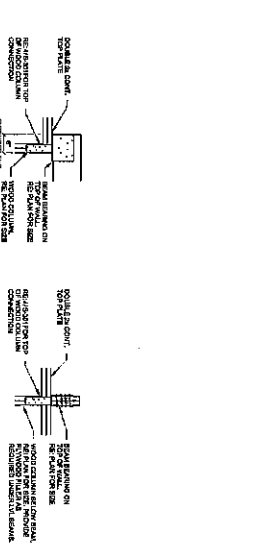
S-114

TYPE 4 - CEILING FRAMING PLAN / ROOF FRAMING PLAN

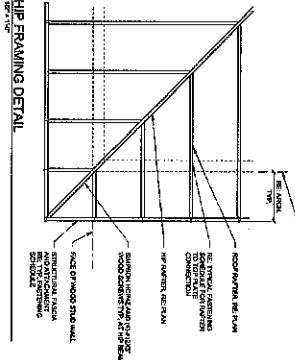
S-114



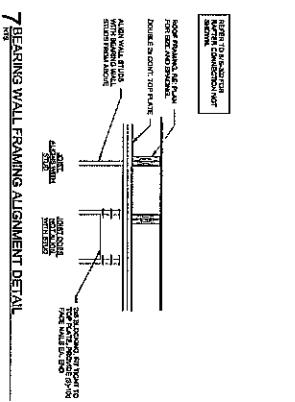
11 FORCE TRANSFER AROUND OPENINGS



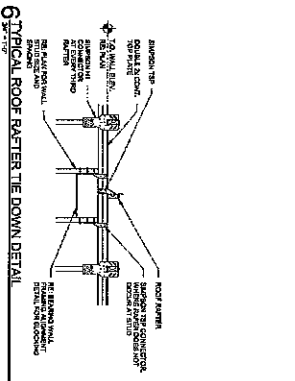
10 TYPICAL BEAM TO STUD WALL CONNECTIONS



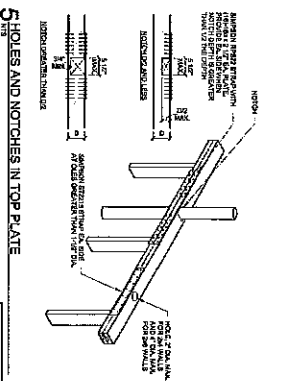
8 HIP FRAMING DETAIL



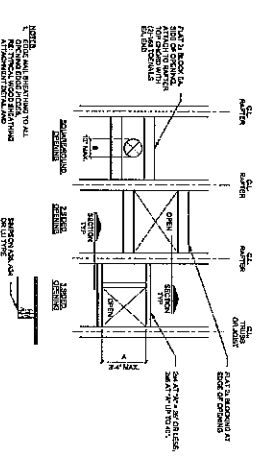
7 BEARING WALL FRAMING ALIGNMENT DETAIL



6 TYPICAL ROOF RAFTER TIE DOWN DETAIL



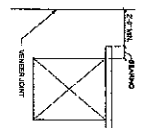
5 HOLES AND NOTCHES IN TOP PLATE



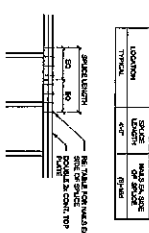
9 SMALL OPENING IN WOOD SHEATHING

12 MASONRY LOOSE LINTEL ANGLE SCHEDULE

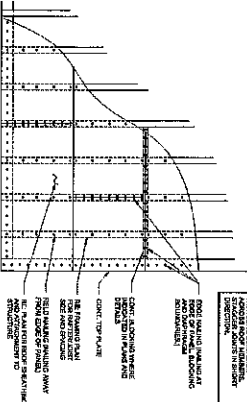
MASONRY VENEER LOOSE LINTEL ANGLE SCHEDULE			
QUALITY	ANGLE SIZE	BRACING	SPACING
UP TO 2"	1/2" X 1/2"	1/2"	16"
2" TO 4"	3/4" X 3/4"	3/4"	16"
4" TO 6"	1" X 1"	1"	16"
6" TO 8"	1 1/4" X 1 1/4"	1 1/4"	16"
8" TO 10"	1 1/2" X 1 1/2"	1 1/2"	16"
10" TO 12"	1 3/4" X 1 3/4"	1 3/4"	16"
12" TO 14"	2" X 2"	2"	16"
14" TO 16"	2 1/4" X 2 1/4"	2 1/4"	16"
16" TO 18"	2 1/2" X 2 1/2"	2 1/2"	16"
18" TO 20"	2 3/4" X 2 3/4"	2 3/4"	16"
20" TO 22"	3" X 3"	3"	16"
22" TO 24"	3 1/4" X 3 1/4"	3 1/4"	16"
24" TO 26"	3 1/2" X 3 1/2"	3 1/2"	16"
26" TO 28"	3 3/4" X 3 3/4"	3 3/4"	16"
28" TO 30"	4" X 4"	4"	16"
30" TO 32"	4 1/4" X 4 1/4"	4 1/4"	16"
32" TO 34"	4 1/2" X 4 1/2"	4 1/2"	16"
34" TO 36"	4 3/4" X 4 3/4"	4 3/4"	16"
36" TO 38"	5" X 5"	5"	16"
38" TO 40"	5 1/4" X 5 1/4"	5 1/4"	16"
40" TO 42"	5 1/2" X 5 1/2"	5 1/2"	16"
42" TO 44"	5 3/4" X 5 3/4"	5 3/4"	16"
44" TO 46"	6" X 6"	6"	16"
46" TO 48"	6 1/4" X 6 1/4"	6 1/4"	16"
48" TO 50"	6 1/2" X 6 1/2"	6 1/2"	16"
50" TO 52"	6 3/4" X 6 3/4"	6 3/4"	16"
52" TO 54"	7" X 7"	7"	16"
54" TO 56"	7 1/4" X 7 1/4"	7 1/4"	16"
56" TO 58"	7 1/2" X 7 1/2"	7 1/2"	16"
58" TO 60"	7 3/4" X 7 3/4"	7 3/4"	16"
60" TO 62"	8" X 8"	8"	16"
62" TO 64"	8 1/4" X 8 1/4"	8 1/4"	16"
64" TO 66"	8 1/2" X 8 1/2"	8 1/2"	16"
66" TO 68"	8 3/4" X 8 3/4"	8 3/4"	16"
68" TO 70"	9" X 9"	9"	16"
70" TO 72"	9 1/4" X 9 1/4"	9 1/4"	16"
72" TO 74"	9 1/2" X 9 1/2"	9 1/2"	16"
74" TO 76"	9 3/4" X 9 3/4"	9 3/4"	16"
76" TO 78"	10" X 10"	10"	16"
78" TO 80"	10 1/4" X 10 1/4"	10 1/4"	16"
80" TO 82"	10 1/2" X 10 1/2"	10 1/2"	16"
82" TO 84"	10 3/4" X 10 3/4"	10 3/4"	16"
84" TO 86"	11" X 11"	11"	16"
86" TO 88"	11 1/4" X 11 1/4"	11 1/4"	16"
88" TO 90"	11 1/2" X 11 1/2"	11 1/2"	16"
90" TO 92"	11 3/4" X 11 3/4"	11 3/4"	16"
92" TO 94"	12" X 12"	12"	16"
94" TO 96"	12 1/4" X 12 1/4"	12 1/4"	16"
96" TO 98"	12 1/2" X 12 1/2"	12 1/2"	16"
98" TO 100"	12 3/4" X 12 3/4"	12 3/4"	16"



4 TYPICAL TOP PLATE SPLICED



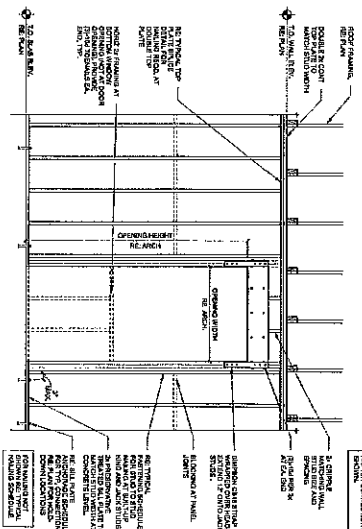
3 TYPICAL WOOD SHEATHING ATTACHMENT DIAGRAM

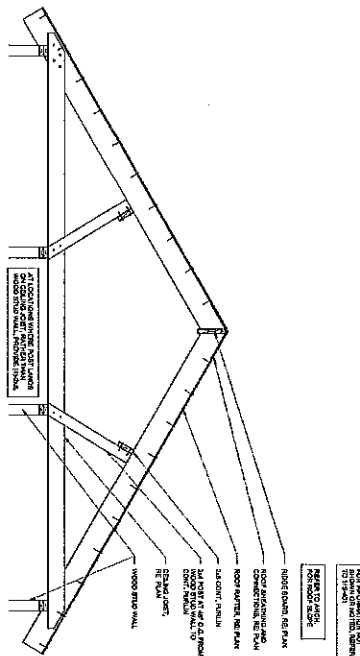


2 OPENING SCHEDULE

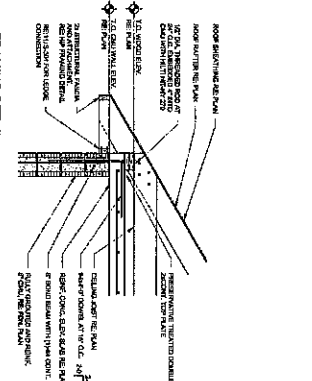
OPENING SCHEDULE			
WALL	HEIGHT	SPACING	ANGLE SIZE
UP TO 2"	1/2"	16"	1/2" X 1/2"
2" TO 4"	3/4"	16"	3/4" X 3/4"
4" TO 6"	1"	16"	1" X 1"
6" TO 8"	1 1/4"	16"	1 1/4" X 1 1/4"
8" TO 10"	1 1/2"	16"	1 1/2" X 1 1/2"
10" TO 12"	1 3/4"	16"	1 3/4" X 1 3/4"
12" TO 14"	2"	16"	2" X 2"
14" TO 16"	2 1/4"	16"	2 1/4" X 2 1/4"
16" TO 18"	2 1/2"	16"	2 1/2" X 2 1/2"
18" TO 20"	2 3/4"	16"	2 3/4" X 2 3/4"
20" TO 22"	3"	16"	3" X 3"
22" TO 24"	3 1/4"	16"	3 1/4" X 3 1/4"
24" TO 26"	3 1/2"	16"	3 1/2" X 3 1/2"
26" TO 28"	3 3/4"	16"	3 3/4" X 3 3/4"
28" TO 30"	4"	16"	4" X 4"
30" TO 32"	4 1/4"	16"	4 1/4" X 4 1/4"
32" TO 34"	4 1/2"	16"	4 1/2" X 4 1/2"
34" TO 36"	4 3/4"	16"	4 3/4" X 4 3/4"
36" TO 38"	5"	16"	5" X 5"
38" TO 40"	5 1/4"	16"	5 1/4" X 5 1/4"
40" TO 42"	5 1/2"	16"	5 1/2" X 5 1/2"
42" TO 44"	5 3/4"	16"	5 3/4" X 5 3/4"
44" TO 46"	6"	16"	6" X 6"
46" TO 48"	6 1/4"	16"	6 1/4" X 6 1/4"
48" TO 50"	6 1/2"	16"	6 1/2" X 6 1/2"
50" TO 52"	6 3/4"	16"	6 3/4" X 6 3/4"
52" TO 54"	7"	16"	7" X 7"
54" TO 56"	7 1/4"	16"	7 1/4" X 7 1/4"
56" TO 58"	7 1/2"	16"	7 1/2" X 7 1/2"
58" TO 60"	7 3/4"	16"	7 3/4" X 7 3/4"
60" TO 62"	8"	16"	8" X 8"
62" TO 64"	8 1/4"	16"	8 1/4" X 8 1/4"
64" TO 66"	8 1/2"	16"	8 1/2" X 8 1/2"
66" TO 68"	8 3/4"	16"	8 3/4" X 8 3/4"
68" TO 70"	9"	16"	9" X 9"
70" TO 72"	9 1/4"	16"	9 1/4" X 9 1/4"
72" TO 74"	9 1/2"	16"	9 1/2" X 9 1/2"
74" TO 76"	9 3/4"	16"	9 3/4" X 9 3/4"
76" TO 78"	10"	16"	10" X 10"
78" TO 80"	10 1/4"	16"	10 1/4" X 10 1/4"
80" TO 82"	10 1/2"	16"	10 1/2" X 10 1/2"
82" TO 84"	10 3/4"	16"	10 3/4" X 10 3/4"
84" TO 86"	11"	16"	11" X 11"
86" TO 88"	11 1/4"	16"	11 1/4" X 11 1/4"
88" TO 90"	11 1/2"	16"	11 1/2" X 11 1/2"
90" TO 92"	11 3/4"	16"	11 3/4" X 11 3/4"
92" TO 94"	12"	16"	12" X 12"
94" TO 96"	12 1/4"	16"	12 1/4" X 12 1/4"
96" TO 98"	12 1/2"	16"	12 1/2" X 12 1/2"
98" TO 100"	12 3/4"	16"	12 3/4" X 12 3/4"

1 TYPICAL WALL OPENING DETAIL

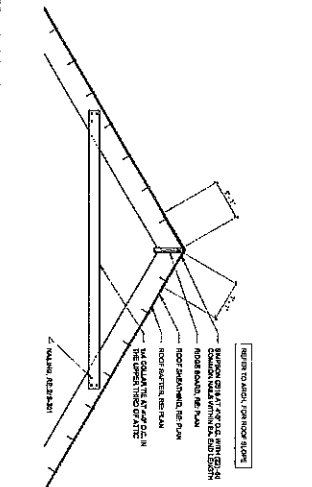




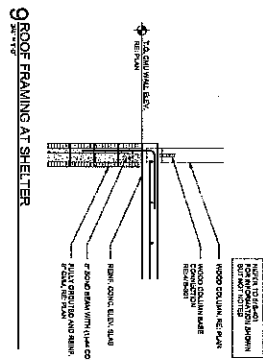
10 FRAMING DETAIL



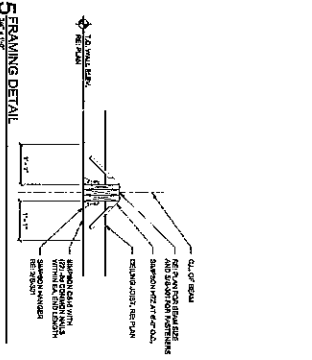
7 FRAMING DETAIL



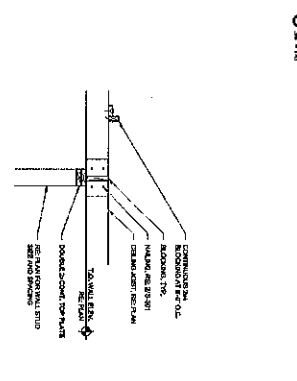
6 FRAMING DETAIL



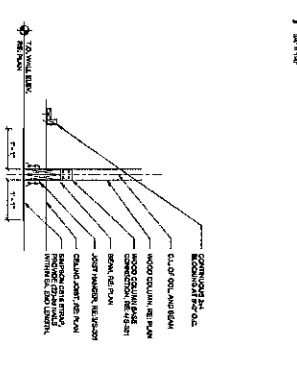
9 ROOF FRAMING AT SHELTER



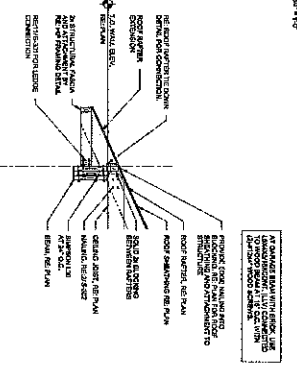
5 FRAMING DETAIL



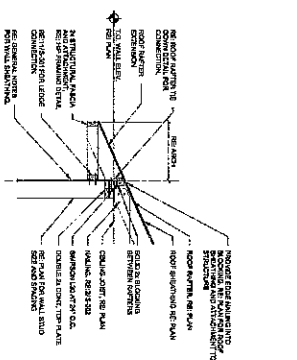
4 FRAMING DETAIL



3 FRAMING DETAIL



2 FRAMING DETAIL



1 FRAMING DETAIL

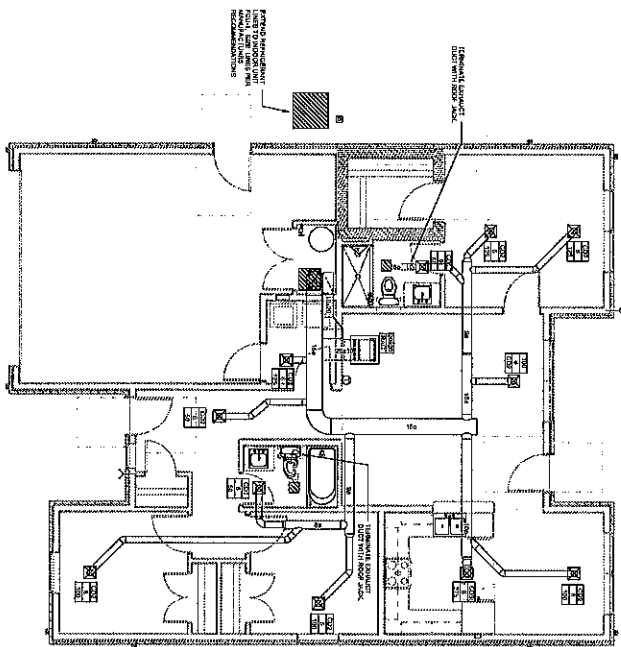
blue river ARCHITECTS
 110% CONSTRUCTION DOCUMENTS
 1234 SOMEWHERE STREET TOWN, STATE ZIP
S-401
 FRAMING DETAILS

CHEROKEE NATION TALEQUAH HOUSING DEVELOPMENT - TYPES 1 TO 4
 1234 SOMEWHERE STREET TOWN, STATE ZIP
S-401
 FRAMING DETAILS

blue river ARCHITECTS
 110% CONSTRUCTION DOCUMENTS

S-401
 FRAMING DETAILS

① FIRST FLOOR HVAC PLAN



HEAT PUMP SCHEDULE

UNIT	ROOM	HEATING	Cooling	Control	Notes
1	101	101	101	101	
2	102	102	102	102	
3	103	103	103	103	
4	104	104	104	104	
5	105	105	105	105	
6	106	106	106	106	
7	107	107	107	107	
8	108	108	108	108	
9	109	109	109	109	
10	110	110	110	110	

FAN COIL UNIT SCHEDULE

UNIT	ROOM	Capacity	Control	Notes
1	101	101	101	
2	102	102	102	
3	103	103	103	
4	104	104	104	
5	105	105	105	
6	106	106	106	
7	107	107	107	
8	108	108	108	
9	109	109	109	
10	110	110	110	

EXHAUST FAN SCHEDULE

UNIT	ROOM	Capacity	Control	Notes
1	101	101	101	
2	102	102	102	
3	103	103	103	
4	104	104	104	
5	105	105	105	
6	106	106	106	
7	107	107	107	
8	108	108	108	
9	109	109	109	
10	110	110	110	

AIR DEVICE SCHEDULE

UNIT	ROOM	Capacity	Control	Notes
1	101	101	101	
2	102	102	102	
3	103	103	103	
4	104	104	104	
5	105	105	105	
6	106	106	106	
7	107	107	107	
8	108	108	108	
9	109	109	109	
10	110	110	110	

NOTES:

1. ALL EXHAUST FANS SHALL BE INSTALLED IN THE ROOM WITH THE ROOM NUMBER.
2. FAN COIL UNITS SHALL BE INSTALLED IN THE ROOM WITH THE ROOM NUMBER.
3. AIR DEVICES SHALL BE INSTALLED IN THE ROOM WITH THE ROOM NUMBER.
4. EXHAUST FANS SHALL BE INSTALLED IN THE ROOM WITH THE ROOM NUMBER.
5. FAN COIL UNITS SHALL BE INSTALLED IN THE ROOM WITH THE ROOM NUMBER.
6. AIR DEVICES SHALL BE INSTALLED IN THE ROOM WITH THE ROOM NUMBER.
7. EXHAUST FANS SHALL BE INSTALLED IN THE ROOM WITH THE ROOM NUMBER.
8. FAN COIL UNITS SHALL BE INSTALLED IN THE ROOM WITH THE ROOM NUMBER.
9. AIR DEVICES SHALL BE INSTALLED IN THE ROOM WITH THE ROOM NUMBER.
10. EXHAUST FANS SHALL BE INSTALLED IN THE ROOM WITH THE ROOM NUMBER.



CHEROKEE NATION TAHLEQUAH HOUSING DEVELOPMENT - TYPE 4

M101
TYPE 4 HVAC PLAN AND SCHEDULES



MPW ENGINEERING, LLC
1410 W. TULSA STREET, SUITE 100
TULSA, OK 74107
TEL: (918) 438-1111
FAX: (918) 438-1112
WWW.MPWENGINEERING.COM

DATE: 2023/01/04
PROJECT: CHEROKEE NATION TAHLEQUAH HOUSING DEVELOPMENT - TYPE 4
CLIENT: CHEROKEE NATION

M101

PIPE AND FITTINGS	ABBREVIATIONS
1/2" GALV. STEEL PIPE	A 1/2" GALV. STEEL PIPE
1/2" GALV. STEEL PIPE	B 1/2" GALV. STEEL PIPE
1/2" GALV. STEEL PIPE	C 1/2" GALV. STEEL PIPE
1/2" GALV. STEEL PIPE	D 1/2" GALV. STEEL PIPE
1/2" GALV. STEEL PIPE	E 1/2" GALV. STEEL PIPE
1/2" GALV. STEEL PIPE	F 1/2" GALV. STEEL PIPE
1/2" GALV. STEEL PIPE	G 1/2" GALV. STEEL PIPE
1/2" GALV. STEEL PIPE	H 1/2" GALV. STEEL PIPE
1/2" GALV. STEEL PIPE	I 1/2" GALV. STEEL PIPE
1/2" GALV. STEEL PIPE	J 1/2" GALV. STEEL PIPE
1/2" GALV. STEEL PIPE	K 1/2" GALV. STEEL PIPE
1/2" GALV. STEEL PIPE	L 1/2" GALV. STEEL PIPE
1/2" GALV. STEEL PIPE	M 1/2" GALV. STEEL PIPE
1/2" GALV. STEEL PIPE	N 1/2" GALV. STEEL PIPE
1/2" GALV. STEEL PIPE	O 1/2" GALV. STEEL PIPE
1/2" GALV. STEEL PIPE	P 1/2" GALV. STEEL PIPE
1/2" GALV. STEEL PIPE	Q 1/2" GALV. STEEL PIPE
1/2" GALV. STEEL PIPE	R 1/2" GALV. STEEL PIPE
1/2" GALV. STEEL PIPE	S 1/2" GALV. STEEL PIPE
1/2" GALV. STEEL PIPE	T 1/2" GALV. STEEL PIPE
1/2" GALV. STEEL PIPE	U 1/2" GALV. STEEL PIPE
1/2" GALV. STEEL PIPE	V 1/2" GALV. STEEL PIPE
1/2" GALV. STEEL PIPE	W 1/2" GALV. STEEL PIPE
1/2" GALV. STEEL PIPE	X 1/2" GALV. STEEL PIPE
1/2" GALV. STEEL PIPE	Y 1/2" GALV. STEEL PIPE
1/2" GALV. STEEL PIPE	Z 1/2" GALV. STEEL PIPE

CONSTRUCTION AND INSTALLATION NOTES:

1. ALL WORK SHALL BE IN ACCORDANCE WITH THE LATEST EDITIONS OF THE INTERNATIONAL MECHANICAL AND ELECTRICAL CODE (IMC) AND THE NATIONAL FIRE PROTECTION ASSOCIATION (NFPA) 70, NATIONAL ELECTRICAL CODE (NEC).
2. ALL WORK SHALL BE IN ACCORDANCE WITH THE LATEST EDITIONS OF THE INTERNATIONAL PLUMBING AND MECHANICAL CODE (IPMC) AND THE NATIONAL FIRE PROTECTION ASSOCIATION (NFPA) 95, NATIONAL MECHANICAL ELECTRICAL PLUMBING CODE (NEMPEC).
3. ALL WORK SHALL BE IN ACCORDANCE WITH THE LATEST EDITIONS OF THE INTERNATIONAL MECHANICAL AND ELECTRICAL CODE (IMC) AND THE NATIONAL FIRE PROTECTION ASSOCIATION (NFPA) 70, NATIONAL ELECTRICAL CODE (NEC).
4. ALL WORK SHALL BE IN ACCORDANCE WITH THE LATEST EDITIONS OF THE INTERNATIONAL PLUMBING AND MECHANICAL CODE (IPMC) AND THE NATIONAL FIRE PROTECTION ASSOCIATION (NFPA) 95, NATIONAL MECHANICAL ELECTRICAL PLUMBING CODE (NEMPEC).
5. ALL WORK SHALL BE IN ACCORDANCE WITH THE LATEST EDITIONS OF THE INTERNATIONAL MECHANICAL AND ELECTRICAL CODE (IMC) AND THE NATIONAL FIRE PROTECTION ASSOCIATION (NFPA) 70, NATIONAL ELECTRICAL CODE (NEC).
6. ALL WORK SHALL BE IN ACCORDANCE WITH THE LATEST EDITIONS OF THE INTERNATIONAL PLUMBING AND MECHANICAL CODE (IPMC) AND THE NATIONAL FIRE PROTECTION ASSOCIATION (NFPA) 95, NATIONAL MECHANICAL ELECTRICAL PLUMBING CODE (NEMPEC).
7. ALL WORK SHALL BE IN ACCORDANCE WITH THE LATEST EDITIONS OF THE INTERNATIONAL MECHANICAL AND ELECTRICAL CODE (IMC) AND THE NATIONAL FIRE PROTECTION ASSOCIATION (NFPA) 70, NATIONAL ELECTRICAL CODE (NEC).
8. ALL WORK SHALL BE IN ACCORDANCE WITH THE LATEST EDITIONS OF THE INTERNATIONAL PLUMBING AND MECHANICAL CODE (IPMC) AND THE NATIONAL FIRE PROTECTION ASSOCIATION (NFPA) 95, NATIONAL MECHANICAL ELECTRICAL PLUMBING CODE (NEMPEC).
9. ALL WORK SHALL BE IN ACCORDANCE WITH THE LATEST EDITIONS OF THE INTERNATIONAL MECHANICAL AND ELECTRICAL CODE (IMC) AND THE NATIONAL FIRE PROTECTION ASSOCIATION (NFPA) 70, NATIONAL ELECTRICAL CODE (NEC).
10. ALL WORK SHALL BE IN ACCORDANCE WITH THE LATEST EDITIONS OF THE INTERNATIONAL PLUMBING AND MECHANICAL CODE (IPMC) AND THE NATIONAL FIRE PROTECTION ASSOCIATION (NFPA) 95, NATIONAL MECHANICAL ELECTRICAL PLUMBING CODE (NEMPEC).

LEGEND:

--- POTABLE COLD WATER
 --- POTABLE HOT WATER
 --- WASTE
 --- VENT

NOTES:

1. ALL WORK SHALL BE IN ACCORDANCE WITH THE LATEST EDITIONS OF THE INTERNATIONAL MECHANICAL AND ELECTRICAL CODE (IMC) AND THE NATIONAL FIRE PROTECTION ASSOCIATION (NFPA) 70, NATIONAL ELECTRICAL CODE (NEC).

2. ALL WORK SHALL BE IN ACCORDANCE WITH THE LATEST EDITIONS OF THE INTERNATIONAL PLUMBING AND MECHANICAL CODE (IPMC) AND THE NATIONAL FIRE PROTECTION ASSOCIATION (NFPA) 95, NATIONAL MECHANICAL ELECTRICAL PLUMBING CODE (NEMPEC).

3. ALL WORK SHALL BE IN ACCORDANCE WITH THE LATEST EDITIONS OF THE INTERNATIONAL MECHANICAL AND ELECTRICAL CODE (IMC) AND THE NATIONAL FIRE PROTECTION ASSOCIATION (NFPA) 70, NATIONAL ELECTRICAL CODE (NEC).

4. ALL WORK SHALL BE IN ACCORDANCE WITH THE LATEST EDITIONS OF THE INTERNATIONAL PLUMBING AND MECHANICAL CODE (IPMC) AND THE NATIONAL FIRE PROTECTION ASSOCIATION (NFPA) 95, NATIONAL MECHANICAL ELECTRICAL PLUMBING CODE (NEMPEC).

5. ALL WORK SHALL BE IN ACCORDANCE WITH THE LATEST EDITIONS OF THE INTERNATIONAL MECHANICAL AND ELECTRICAL CODE (IMC) AND THE NATIONAL FIRE PROTECTION ASSOCIATION (NFPA) 70, NATIONAL ELECTRICAL CODE (NEC).

6. ALL WORK SHALL BE IN ACCORDANCE WITH THE LATEST EDITIONS OF THE INTERNATIONAL PLUMBING AND MECHANICAL CODE (IPMC) AND THE NATIONAL FIRE PROTECTION ASSOCIATION (NFPA) 95, NATIONAL MECHANICAL ELECTRICAL PLUMBING CODE (NEMPEC).

7. ALL WORK SHALL BE IN ACCORDANCE WITH THE LATEST EDITIONS OF THE INTERNATIONAL MECHANICAL AND ELECTRICAL CODE (IMC) AND THE NATIONAL FIRE PROTECTION ASSOCIATION (NFPA) 70, NATIONAL ELECTRICAL CODE (NEC).

8. ALL WORK SHALL BE IN ACCORDANCE WITH THE LATEST EDITIONS OF THE INTERNATIONAL PLUMBING AND MECHANICAL CODE (IPMC) AND THE NATIONAL FIRE PROTECTION ASSOCIATION (NFPA) 95, NATIONAL MECHANICAL ELECTRICAL PLUMBING CODE (NEMPEC).

9. ALL WORK SHALL BE IN ACCORDANCE WITH THE LATEST EDITIONS OF THE INTERNATIONAL MECHANICAL AND ELECTRICAL CODE (IMC) AND THE NATIONAL FIRE PROTECTION ASSOCIATION (NFPA) 70, NATIONAL ELECTRICAL CODE (NEC).

10. ALL WORK SHALL BE IN ACCORDANCE WITH THE LATEST EDITIONS OF THE INTERNATIONAL PLUMBING AND MECHANICAL CODE (IPMC) AND THE NATIONAL FIRE PROTECTION ASSOCIATION (NFPA) 95, NATIONAL MECHANICAL ELECTRICAL PLUMBING CODE (NEMPEC).

MPW
 MPW ENGINEERING, LLC
 1110 N. WILSON AVENUE, SUITE 100
 TAMPA, FL 33604
 TEL: 813.288.1111
 FAX: 813.288.1112
 WWW.MPWENGINEERING.COM

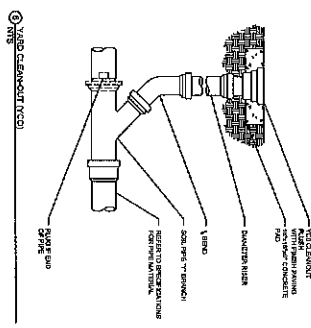
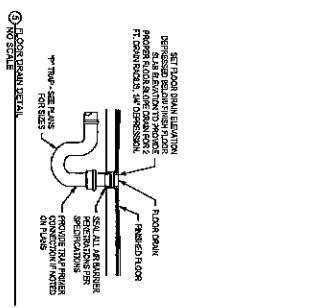
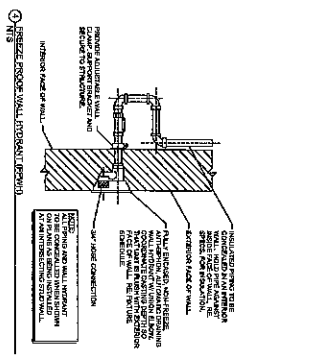
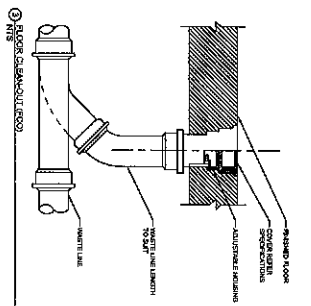
CHEROKEE NATION TAHLEQUAH HOUSING DEVELOPMENT - TYPE 4

P001 PLUMBING NOTES

DATE: 08/2021
 DRAWN BY: [Name]
 CHECKED BY: [Name]
 APPROVED BY: [Name]

P001

blue river ARCHITECTS
 A Modern Firm. A Creative Mind. A Firm of Architects.

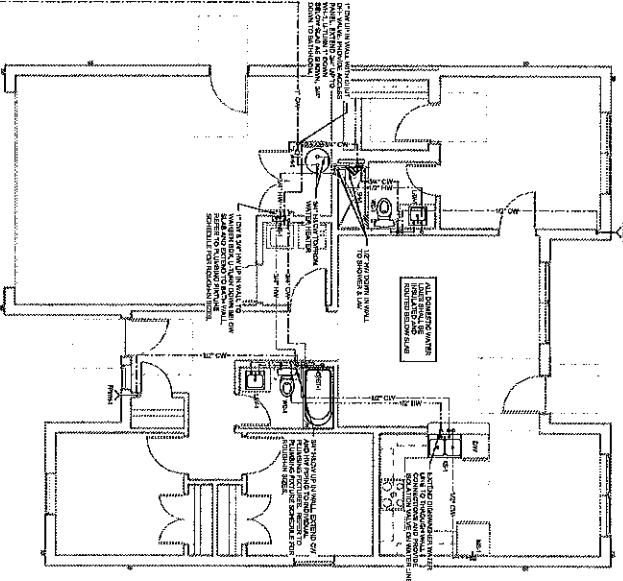
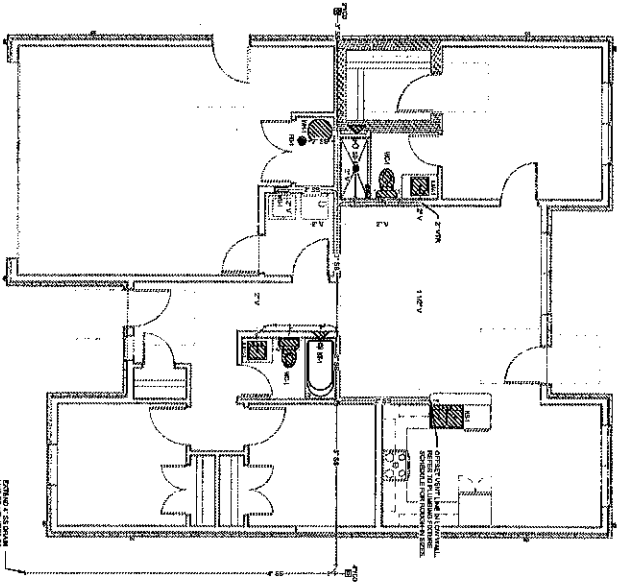


PLUMBING FIXTURE SCHEDULE

NO.	DESCRIPTION	QUANTITY	UNIT	MARKET PRICE	TOTAL PRICE
1	1/2" NPT FLOOR DRAIN	1	EA	150.00	150.00
2	1/2" NPT FLOOR DRAIN	1	EA	150.00	150.00
3	1/2" NPT FLOOR DRAIN	1	EA	150.00	150.00
4	1/2" NPT FLOOR DRAIN	1	EA	150.00	150.00
5	1/2" NPT FLOOR DRAIN	1	EA	150.00	150.00
6	1/2" NPT FLOOR DRAIN	1	EA	150.00	150.00
7	1/2" NPT FLOOR DRAIN	1	EA	150.00	150.00
8	1/2" NPT FLOOR DRAIN	1	EA	150.00	150.00
9	1/2" NPT FLOOR DRAIN	1	EA	150.00	150.00
10	1/2" NPT FLOOR DRAIN	1	EA	150.00	150.00
11	1/2" NPT FLOOR DRAIN	1	EA	150.00	150.00
12	1/2" NPT FLOOR DRAIN	1	EA	150.00	150.00
13	1/2" NPT FLOOR DRAIN	1	EA	150.00	150.00
14	1/2" NPT FLOOR DRAIN	1	EA	150.00	150.00
15	1/2" NPT FLOOR DRAIN	1	EA	150.00	150.00
16	1/2" NPT FLOOR DRAIN	1	EA	150.00	150.00
17	1/2" NPT FLOOR DRAIN	1	EA	150.00	150.00
18	1/2" NPT FLOOR DRAIN	1	EA	150.00	150.00
19	1/2" NPT FLOOR DRAIN	1	EA	150.00	150.00
20	1/2" NPT FLOOR DRAIN	1	EA	150.00	150.00
21	1/2" NPT FLOOR DRAIN	1	EA	150.00	150.00
22	1/2" NPT FLOOR DRAIN	1	EA	150.00	150.00
23	1/2" NPT FLOOR DRAIN	1	EA	150.00	150.00
24	1/2" NPT FLOOR DRAIN	1	EA	150.00	150.00
25	1/2" NPT FLOOR DRAIN	1	EA	150.00	150.00
26	1/2" NPT FLOOR DRAIN	1	EA	150.00	150.00
27	1/2" NPT FLOOR DRAIN	1	EA	150.00	150.00
28	1/2" NPT FLOOR DRAIN	1	EA	150.00	150.00
29	1/2" NPT FLOOR DRAIN	1	EA	150.00	150.00
30	1/2" NPT FLOOR DRAIN	1	EA	150.00	150.00
31	1/2" NPT FLOOR DRAIN	1	EA	150.00	150.00
32	1/2" NPT FLOOR DRAIN	1	EA	150.00	150.00
33	1/2" NPT FLOOR DRAIN	1	EA	150.00	150.00
34	1/2" NPT FLOOR DRAIN	1	EA	150.00	150.00
35	1/2" NPT FLOOR DRAIN	1	EA	150.00	150.00
36	1/2" NPT FLOOR DRAIN	1	EA	150.00	150.00
37	1/2" NPT FLOOR DRAIN	1	EA	150.00	150.00
38	1/2" NPT FLOOR DRAIN	1	EA	150.00	150.00
39	1/2" NPT FLOOR DRAIN	1	EA	150.00	150.00
40	1/2" NPT FLOOR DRAIN	1	EA	150.00	150.00
41	1/2" NPT FLOOR DRAIN	1	EA	150.00	150.00
42	1/2" NPT FLOOR DRAIN	1	EA	150.00	150.00
43	1/2" NPT FLOOR DRAIN	1	EA	150.00	150.00
44	1/2" NPT FLOOR DRAIN	1	EA	150.00	150.00
45	1/2" NPT FLOOR DRAIN	1	EA	150.00	150.00
46	1/2" NPT FLOOR DRAIN	1	EA	150.00	150.00
47	1/2" NPT FLOOR DRAIN	1	EA	150.00	150.00
48	1/2" NPT FLOOR DRAIN	1	EA	150.00	150.00
49	1/2" NPT FLOOR DRAIN	1	EA	150.00	150.00
50	1/2" NPT FLOOR DRAIN	1	EA	150.00	150.00

WATER HEATER SCHEDULE

NO.	DESCRIPTION	QUANTITY	UNIT	MARKET PRICE	TOTAL PRICE
1	1/2" NPT WATER HEATER	1	EA	1000.00	1000.00
2	1/2" NPT WATER HEATER	1	EA	1000.00	1000.00
3	1/2" NPT WATER HEATER	1	EA	1000.00	1000.00
4	1/2" NPT WATER HEATER	1	EA	1000.00	1000.00
5	1/2" NPT WATER HEATER	1	EA	1000.00	1000.00
6	1/2" NPT WATER HEATER	1	EA	1000.00	1000.00
7	1/2" NPT WATER HEATER	1	EA	1000.00	1000.00
8	1/2" NPT WATER HEATER	1	EA	1000.00	1000.00
9	1/2" NPT WATER HEATER	1	EA	1000.00	1000.00
10	1/2" NPT WATER HEATER	1	EA	1000.00	1000.00
11	1/2" NPT WATER HEATER	1	EA	1000.00	1000.00
12	1/2" NPT WATER HEATER	1	EA	1000.00	1000.00
13	1/2" NPT WATER HEATER	1	EA	1000.00	1000.00
14	1/2" NPT WATER HEATER	1	EA	1000.00	1000.00
15	1/2" NPT WATER HEATER	1	EA	1000.00	1000.00
16	1/2" NPT WATER HEATER	1	EA	1000.00	1000.00
17	1/2" NPT WATER HEATER	1	EA	1000.00	1000.00
18	1/2" NPT WATER HEATER	1	EA	1000.00	1000.00
19	1/2" NPT WATER HEATER	1	EA	1000.00	1000.00
20	1/2" NPT WATER HEATER	1	EA	1000.00	1000.00
21	1/2" NPT WATER HEATER	1	EA	1000.00	1000.00
22	1/2" NPT WATER HEATER	1	EA	1000.00	1000.00
23	1/2" NPT WATER HEATER	1	EA	1000.00	1000.00
24	1/2" NPT WATER HEATER	1	EA	1000.00	1000.00
25	1/2" NPT WATER HEATER	1	EA	1000.00	1000.00
26	1/2" NPT WATER HEATER	1	EA	1000.00	1000.00
27	1/2" NPT WATER HEATER	1	EA	1000.00	1000.00
28	1/2" NPT WATER HEATER	1	EA	1000.00	1000.00
29	1/2" NPT WATER HEATER	1	EA	1000.00	1000.00
30	1/2" NPT WATER HEATER	1	EA	1000.00	1000.00
31	1/2" NPT WATER HEATER	1	EA	1000.00	1000.00
32	1/2" NPT WATER HEATER	1	EA	1000.00	1000.00
33	1/2" NPT WATER HEATER	1	EA	1000.00	1000.00
34	1/2" NPT WATER HEATER	1	EA	1000.00	1000.00
35	1/2" NPT WATER HEATER	1	EA	1000.00	1000.00
36	1/2" NPT WATER HEATER	1	EA	1000.00	1000.00
37	1/2" NPT WATER HEATER	1	EA	1000.00	1000.00
38	1/2" NPT WATER HEATER	1	EA	1000.00	1000.00
39	1/2" NPT WATER HEATER	1	EA	1000.00	1000.00
40	1/2" NPT WATER HEATER	1	EA	1000.00	1000.00
41	1/2" NPT WATER HEATER	1	EA	1000.00	1000.00
42	1/2" NPT WATER HEATER	1	EA	1000.00	1000.00
43	1/2" NPT WATER HEATER	1	EA	1000.00	1000.00
44	1/2" NPT WATER HEATER	1	EA	1000.00	1000.00
45	1/2" NPT WATER HEATER	1	EA	1000.00	1000.00
46	1/2" NPT WATER HEATER	1	EA	1000.00	1000.00
47	1/2" NPT WATER HEATER	1	EA	1000.00	1000.00
48	1/2" NPT WATER HEATER	1	EA	1000.00	1000.00
49	1/2" NPT WATER HEATER	1	EA	1000.00	1000.00
50	1/2" NPT WATER HEATER	1	EA	1000.00	1000.00



1. FIRST FLOOR SANITARY PLAN

2. SECOND FLOOR SANITARY PLAN



CHEROKEE NATION TAHLEQUAH HOUSING DEVELOPMENT - TYPE 4

P101
TYPE 4 PLUMBING PLANS



MPW ENGINEERING, LLC
1000 N. W. 10th St.
Ocala, FL 32101
Tel: 352.237.1111
Fax: 352.237.1112
www.mpw-engineering.com

TYPE 4 PLUMBING PLANS

P101