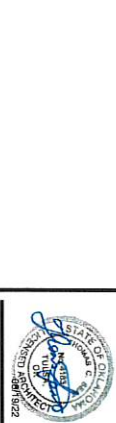
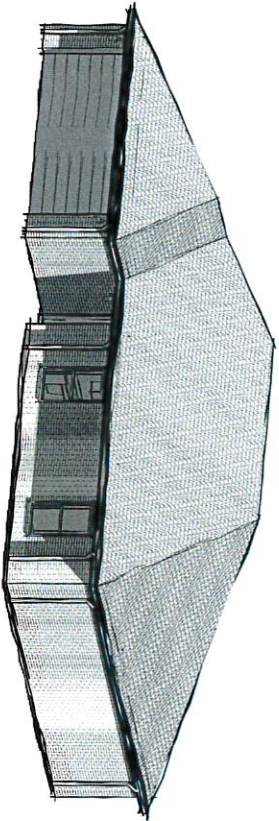


CHEROKEE NATION TAHLEQUAH HOUSING DEVELOPMENT

CONSTRUCTION DOCUMENTS

8/18/22

TYPE 3



CHEROKEE NATION TAHLEQUAH HOUSING DEVELOPMENT - TYPE 3
 ADDRESS HERE
CS
 COVER SHEET



DATE: 8/18/22
 PROJECT NO: 20220104

UNION COUNTY, OKLA
 PROJECT NO: 20220104

COVER SHEET



3-D REPRESENTATION FOR ILLUSTRATIVE PURPOSES ONLY. REFER TO DRAWINGS AND DETAILS

PROJECT CONTACTS	ARCHITECT
OWNER CHEROKEE NATION 1000 W. CHEROKEE AVENUE TULSA, OKLA 74103 PHONE: 918.492.1111	BLUE RIVER ARCHITECTS, LLC 1000 W. CHEROKEE AVENUE TULSA, OKLA 74103 PHONE: 918.492.1111
CONTRACTOR	
CONSULTANT CONTACTS	
MECHANICAL CONSULTANT	
ELECTRICAL CONSULTANT	
PLUMBING CONSULTANT	
FOUNDATION CONSULTANT	
GENERAL CONTRACTOR	

PROJECT LOCATION
ADDRESS HERE

SHEET INDEX				
<table border="0"> <tr> <td> <p>GENERAL 1000 W. CHEROKEE AVENUE TULSA, OKLA 74103 PHONE: 918.492.1111</p> </td> <td> <p>ELECTRICAL 1000 W. CHEROKEE AVENUE TULSA, OKLA 74103 PHONE: 918.492.1111</p> </td> </tr> <tr> <td> <p>MECHANICAL 1000 W. CHEROKEE AVENUE TULSA, OKLA 74103 PHONE: 918.492.1111</p> </td> <td> <p>PLUMBING 1000 W. CHEROKEE AVENUE TULSA, OKLA 74103 PHONE: 918.492.1111</p> </td> </tr> </table>	<p>GENERAL 1000 W. CHEROKEE AVENUE TULSA, OKLA 74103 PHONE: 918.492.1111</p>	<p>ELECTRICAL 1000 W. CHEROKEE AVENUE TULSA, OKLA 74103 PHONE: 918.492.1111</p>	<p>MECHANICAL 1000 W. CHEROKEE AVENUE TULSA, OKLA 74103 PHONE: 918.492.1111</p>	<p>PLUMBING 1000 W. CHEROKEE AVENUE TULSA, OKLA 74103 PHONE: 918.492.1111</p>
<p>GENERAL 1000 W. CHEROKEE AVENUE TULSA, OKLA 74103 PHONE: 918.492.1111</p>	<p>ELECTRICAL 1000 W. CHEROKEE AVENUE TULSA, OKLA 74103 PHONE: 918.492.1111</p>			
<p>MECHANICAL 1000 W. CHEROKEE AVENUE TULSA, OKLA 74103 PHONE: 918.492.1111</p>	<p>PLUMBING 1000 W. CHEROKEE AVENUE TULSA, OKLA 74103 PHONE: 918.492.1111</p>			



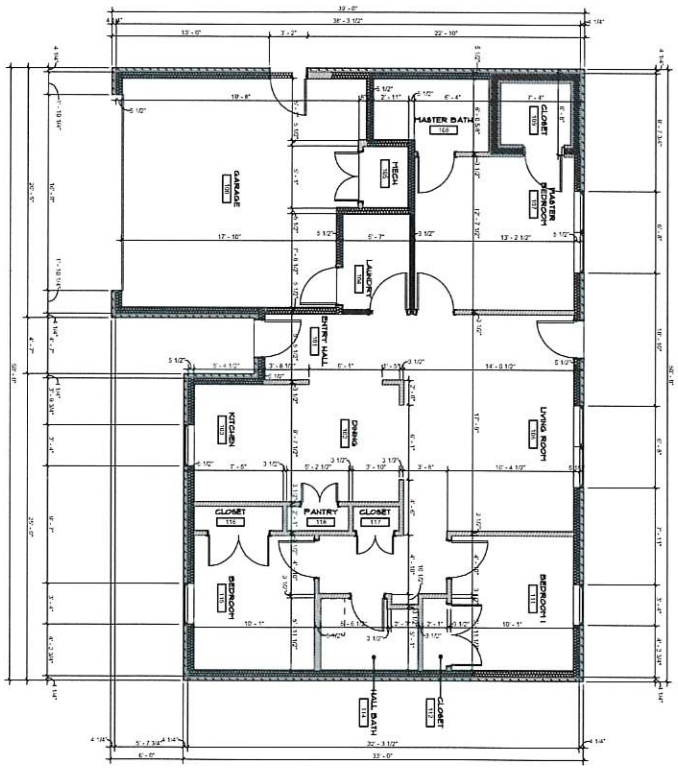


CHEROKEE NATION TAHLEQUAH HOUSING DEVELOPMENT - TYPE 3
 ADDRESS HERE
A101
 FLOOR PLANS

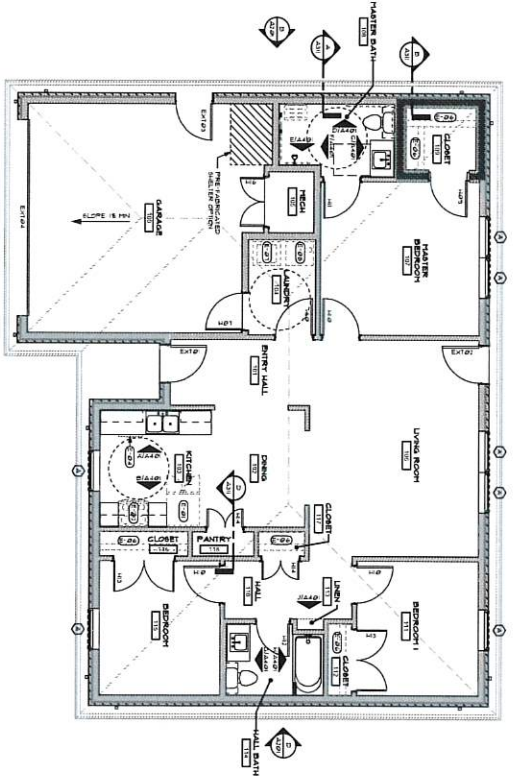
blueriver ARCHITECTS
 20220104
 20220104
 CONSTRUCTION DOCUMENTS
 OPEN HOUSE DATE
 11/15/2022

FLOOR PLANS

A101

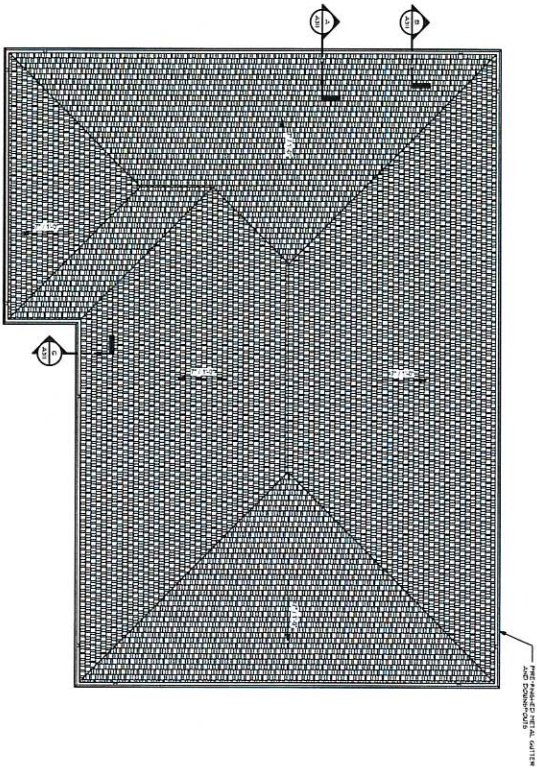


A FLOOR DIMENSION PLAN
 1/8" = 1'-0"

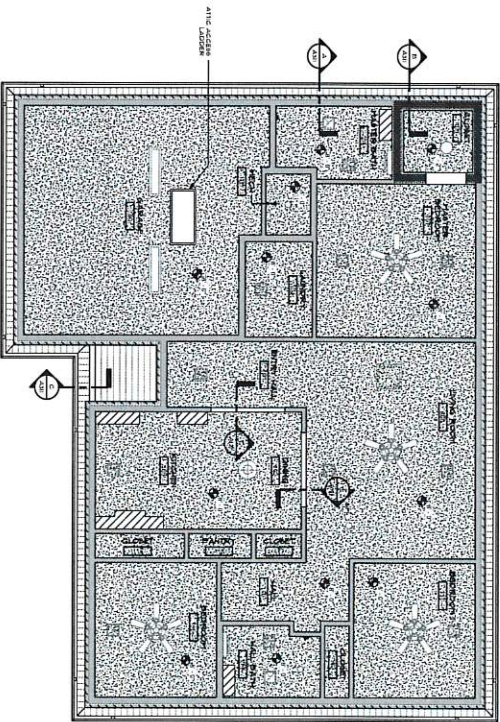


B FLOOR REFERENCE PLAN
 1/8" = 1'-0"

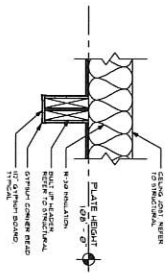
B
ROOF PLAN
1/8" = 1'-0"



A
REFLECTED CEILING PLAN
1/8" = 1'-0"



C
CEILING DETAIL
1/2" = 1'-0"

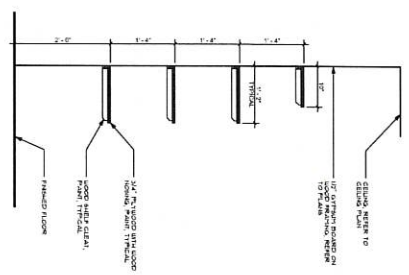


ROOF PLAN GENERAL NOTES

1. ALL ROOF PERMITTING, DESIGNING, AND CONSTRUCTION SHALL BE IN ACCORDANCE WITH THE LATEST EDITIONS OF THE INTERNATIONAL BUILDING CODE (IBC) AND THE LATEST EDITIONS OF THE INTERNATIONAL ROOFING INSTITUTE (IRI) SPECIFICATIONS FOR METAL DECK ROOFING.
2. ALL ROOFING SHALL BE INSTALLED IN ACCORDANCE WITH THE LATEST EDITIONS OF THE INTERNATIONAL BUILDING CODE (IBC) AND THE LATEST EDITIONS OF THE INTERNATIONAL ROOFING INSTITUTE (IRI) SPECIFICATIONS FOR METAL DECK ROOFING.
3. ALL ROOFING SHALL BE INSTALLED IN ACCORDANCE WITH THE LATEST EDITIONS OF THE INTERNATIONAL BUILDING CODE (IBC) AND THE LATEST EDITIONS OF THE INTERNATIONAL ROOFING INSTITUTE (IRI) SPECIFICATIONS FOR METAL DECK ROOFING.
4. PROVIDE MAINTENANCE AT ALL ROOF JOINTS.
5. ALL ROOFING SHALL BE INSTALLED IN ACCORDANCE WITH THE LATEST EDITIONS OF THE INTERNATIONAL BUILDING CODE (IBC) AND THE LATEST EDITIONS OF THE INTERNATIONAL ROOFING INSTITUTE (IRI) SPECIFICATIONS FOR METAL DECK ROOFING.

REFLECTED CEILING PLAN LEGEND

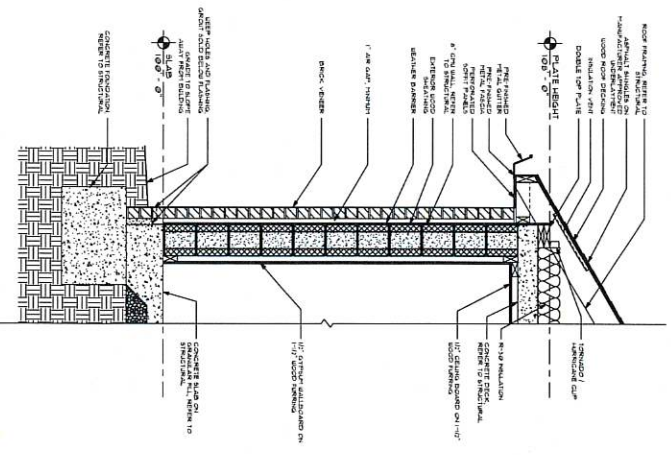
	SUSPENDED ACOUSTIC TILE		ACOUSTIC TILE
	RECESSED LIGHT		FAN
	SPRINKLER HEAD		FIRE ALARM
	SMOKE DETECTOR		FIRE ALARM
	FIRE ALARM		FIRE ALARM
	FIRE ALARM		FIRE ALARM
	FIRE ALARM		FIRE ALARM
	FIRE ALARM		FIRE ALARM
	FIRE ALARM		FIRE ALARM
	FIRE ALARM		FIRE ALARM



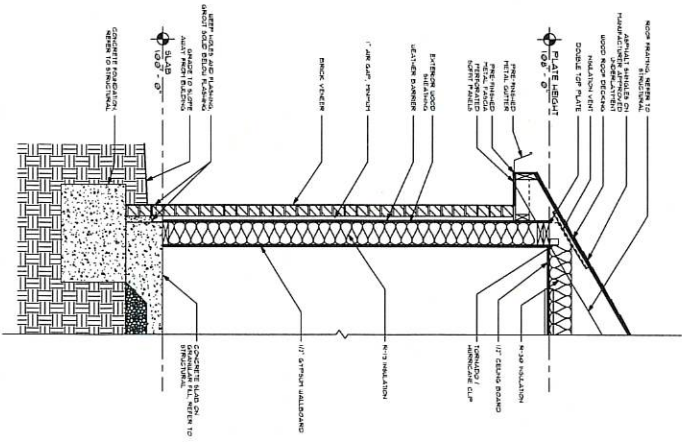
D CASEWORK SECTION
1/8" = 1'-0"



C WALL SECTION
1/8" = 1'-0"



B WALL SECTION
1/8" = 1'-0"



A WALL SECTION
1/8" = 1'-0"

blueriver
ARCHITECTS
A Vision. An American Tradition. Form.

STATE OF GEORGIA
REGISTERED ARCHITECT
19122

CHEROKEE NATION TAHLEQUAH HOUSING DEVELOPMENT - TYPE 3
ADDRESS HERE
A311
WALL SECTIONS

blueriver
ARCHITECTS
1000 W. MARKET STREET, SUITE 200
ATLANTA, GA 30333
404.525.0184
818.817.723

CONSTRUCTION DOCUMENTS
SHEET NUMBER
A311
WALL SECTIONS

A311

DESIGN PARAMETERS

1. DESIGN CODES AND STANDARDS
2. DESIGN CODES AND STANDARDS
3. DESIGN CODES AND STANDARDS
4. DESIGN CODES AND STANDARDS
5. DESIGN CODES AND STANDARDS
6. DESIGN CODES AND STANDARDS
7. DESIGN CODES AND STANDARDS
8. DESIGN CODES AND STANDARDS
9. DESIGN CODES AND STANDARDS
10. DESIGN CODES AND STANDARDS
11. DESIGN CODES AND STANDARDS
12. DESIGN CODES AND STANDARDS
13. DESIGN CODES AND STANDARDS
14. DESIGN CODES AND STANDARDS
15. DESIGN CODES AND STANDARDS
16. DESIGN CODES AND STANDARDS
17. DESIGN CODES AND STANDARDS
18. DESIGN CODES AND STANDARDS
19. DESIGN CODES AND STANDARDS
20. DESIGN CODES AND STANDARDS

WALL WEIGHTS (LBS/FT)		ROOF WEIGHTS (LBS/FT)	
TYPE	WEIGHT	TYPE	WEIGHT
1. 12" CMU	120	1. 12" CMU	120
2. 8" CMU	80	2. 8" CMU	80
3. 6" CMU	60	3. 6" CMU	60
4. 4" CMU	40	4. 4" CMU	40
5. 2" CMU	20	5. 2" CMU	20
6. 12" CMU	120	6. 12" CMU	120
7. 8" CMU	80	7. 8" CMU	80
8. 6" CMU	60	8. 6" CMU	60
9. 4" CMU	40	9. 4" CMU	40
10. 2" CMU	20	10. 2" CMU	20

GENERAL NOTES

1. GENERAL NOTES AND STRUCTURAL REQUIREMENTS
2. GENERAL NOTES AND STRUCTURAL REQUIREMENTS
3. GENERAL NOTES AND STRUCTURAL REQUIREMENTS
4. GENERAL NOTES AND STRUCTURAL REQUIREMENTS
5. GENERAL NOTES AND STRUCTURAL REQUIREMENTS
6. GENERAL NOTES AND STRUCTURAL REQUIREMENTS
7. GENERAL NOTES AND STRUCTURAL REQUIREMENTS
8. GENERAL NOTES AND STRUCTURAL REQUIREMENTS
9. GENERAL NOTES AND STRUCTURAL REQUIREMENTS
10. GENERAL NOTES AND STRUCTURAL REQUIREMENTS
11. GENERAL NOTES AND STRUCTURAL REQUIREMENTS
12. GENERAL NOTES AND STRUCTURAL REQUIREMENTS
13. GENERAL NOTES AND STRUCTURAL REQUIREMENTS
14. GENERAL NOTES AND STRUCTURAL REQUIREMENTS
15. GENERAL NOTES AND STRUCTURAL REQUIREMENTS
16. GENERAL NOTES AND STRUCTURAL REQUIREMENTS
17. GENERAL NOTES AND STRUCTURAL REQUIREMENTS
18. GENERAL NOTES AND STRUCTURAL REQUIREMENTS
19. GENERAL NOTES AND STRUCTURAL REQUIREMENTS
20. GENERAL NOTES AND STRUCTURAL REQUIREMENTS

GENERAL NOTES

1. GENERAL NOTES AND STRUCTURAL REQUIREMENTS
2. GENERAL NOTES AND STRUCTURAL REQUIREMENTS
3. GENERAL NOTES AND STRUCTURAL REQUIREMENTS
4. GENERAL NOTES AND STRUCTURAL REQUIREMENTS
5. GENERAL NOTES AND STRUCTURAL REQUIREMENTS
6. GENERAL NOTES AND STRUCTURAL REQUIREMENTS
7. GENERAL NOTES AND STRUCTURAL REQUIREMENTS
8. GENERAL NOTES AND STRUCTURAL REQUIREMENTS
9. GENERAL NOTES AND STRUCTURAL REQUIREMENTS
10. GENERAL NOTES AND STRUCTURAL REQUIREMENTS
11. GENERAL NOTES AND STRUCTURAL REQUIREMENTS
12. GENERAL NOTES AND STRUCTURAL REQUIREMENTS
13. GENERAL NOTES AND STRUCTURAL REQUIREMENTS
14. GENERAL NOTES AND STRUCTURAL REQUIREMENTS
15. GENERAL NOTES AND STRUCTURAL REQUIREMENTS
16. GENERAL NOTES AND STRUCTURAL REQUIREMENTS
17. GENERAL NOTES AND STRUCTURAL REQUIREMENTS
18. GENERAL NOTES AND STRUCTURAL REQUIREMENTS
19. GENERAL NOTES AND STRUCTURAL REQUIREMENTS
20. GENERAL NOTES AND STRUCTURAL REQUIREMENTS

GENERAL NOTES

1. GENERAL NOTES AND STRUCTURAL REQUIREMENTS
2. GENERAL NOTES AND STRUCTURAL REQUIREMENTS
3. GENERAL NOTES AND STRUCTURAL REQUIREMENTS
4. GENERAL NOTES AND STRUCTURAL REQUIREMENTS
5. GENERAL NOTES AND STRUCTURAL REQUIREMENTS
6. GENERAL NOTES AND STRUCTURAL REQUIREMENTS
7. GENERAL NOTES AND STRUCTURAL REQUIREMENTS
8. GENERAL NOTES AND STRUCTURAL REQUIREMENTS
9. GENERAL NOTES AND STRUCTURAL REQUIREMENTS
10. GENERAL NOTES AND STRUCTURAL REQUIREMENTS
11. GENERAL NOTES AND STRUCTURAL REQUIREMENTS
12. GENERAL NOTES AND STRUCTURAL REQUIREMENTS
13. GENERAL NOTES AND STRUCTURAL REQUIREMENTS
14. GENERAL NOTES AND STRUCTURAL REQUIREMENTS
15. GENERAL NOTES AND STRUCTURAL REQUIREMENTS
16. GENERAL NOTES AND STRUCTURAL REQUIREMENTS
17. GENERAL NOTES AND STRUCTURAL REQUIREMENTS
18. GENERAL NOTES AND STRUCTURAL REQUIREMENTS
19. GENERAL NOTES AND STRUCTURAL REQUIREMENTS
20. GENERAL NOTES AND STRUCTURAL REQUIREMENTS

SPECIAL INSPECTION REQUIREMENTS (2015)

SECTION	DESCRIPTION	INSPECTION	REMARKS
1.0	FOUNDATION	1.0	FOUNDATION
2.0	WALLS	2.0	WALLS
3.0	FLOORS	3.0	FLOORS
4.0	ROOFS	4.0	ROOFS
5.0	MECHANICAL	5.0	MECHANICAL
6.0	ELECTRICAL	6.0	ELECTRICAL
7.0	PLUMBING	7.0	PLUMBING
8.0	MECHANICAL	8.0	MECHANICAL
9.0	ELECTRICAL	9.0	ELECTRICAL
10.0	PLUMBING	10.0	PLUMBING

ACI 308/PCI 308.1 SPECIAL INSPECTION REQUIREMENTS

SECTION	DESCRIPTION	INSPECTION	REMARKS
1.0	FOUNDATION	1.0	FOUNDATION
2.0	WALLS	2.0	WALLS
3.0	FLOORS	3.0	FLOORS
4.0	ROOFS	4.0	ROOFS
5.0	MECHANICAL	5.0	MECHANICAL
6.0	ELECTRICAL	6.0	ELECTRICAL
7.0	PLUMBING	7.0	PLUMBING
8.0	MECHANICAL	8.0	MECHANICAL
9.0	ELECTRICAL	9.0	ELECTRICAL
10.0	PLUMBING	10.0	PLUMBING

ABBREVIATIONS

ABBREVIATION	MEANING	ABBREVIATION	MEANING	ABBREVIATION	MEANING
A.A.	ASBESTOS	A.C.	ACRYLIC	A.C.I.	AMERICAN CONCRETE INSTITUTE
A.S.	ALUMINUM	A.C.P.	ACRYLIC COMPOUND	A.C.I. 308	ACI 308.1
A.S.T.M.	AMERICAN SOCIETY OF TESTING MATERIALS	A.C.P.	ACRYLIC COMPOUND	A.C.I. 308.1	ACI 308.1
A.S.T.M.	AMERICAN SOCIETY OF TESTING MATERIALS	A.C.P.	ACRYLIC COMPOUND	A.C.I. 308.1	ACI 308.1
A.S.T.M.	AMERICAN SOCIETY OF TESTING MATERIALS	A.C.P.	ACRYLIC COMPOUND	A.C.I. 308.1	ACI 308.1

CHEROKEE NATION TALEQUAH HOUSING DEVELOPMENT - TYPES 1 TO 4
 1234 SOMEWHERE STREET TOWN, STATE ZIP
S-001
 GENERAL NOTES AND STRUCTURAL SPECIAL INSPECTIONS

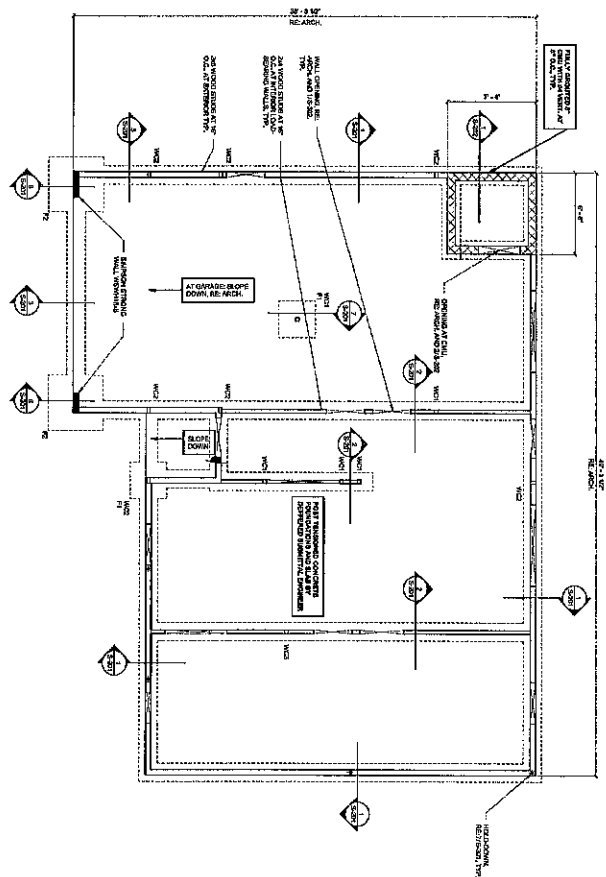
blueriver
 ARCHITECTS
 1234 SOMEWHERE STREET TOWN, STATE ZIP
 555-555-5555
 WWW.BLUERIVERARCHITECTS.COM

S-001
 GENERAL NOTES AND STRUCTURAL SPECIAL INSPECTIONS

- EXPLANATION OF NOTES**
1. ALL DIMENSIONS ARE IN FEET AND INCHES UNLESS OTHERWISE NOTED.
 2. ALL DIMENSIONS ARE TO FACE UNLESS OTHERWISE NOTED.
 3. ALL DIMENSIONS ARE TO CENTERLINE UNLESS OTHERWISE NOTED.
 4. ALL DIMENSIONS ARE TO CENTERLINE UNLESS OTHERWISE NOTED.
 5. ALL DIMENSIONS ARE TO CENTERLINE UNLESS OTHERWISE NOTED.
 6. ALL DIMENSIONS ARE TO CENTERLINE UNLESS OTHERWISE NOTED.
 7. ALL DIMENSIONS ARE TO CENTERLINE UNLESS OTHERWISE NOTED.
 8. ALL DIMENSIONS ARE TO CENTERLINE UNLESS OTHERWISE NOTED.

THIS PLAN IS THE PROPERTY OF BLUE RIVER ARCHITECTS AND IS NOT TO BE REPRODUCED OR COPIED IN ANY MANNER WITHOUT THE WRITTEN PERMISSION OF BLUE RIVER ARCHITECTS.

THESE DOCUMENTS ARE THE PROPERTY OF BLUE RIVER ARCHITECTS AND ARE NOT TO BE REPRODUCED OR COPIED IN ANY MANNER WITHOUT THE WRITTEN PERMISSION OF BLUE RIVER ARCHITECTS.



1 FOUNDATION PLAN - TYPE 3

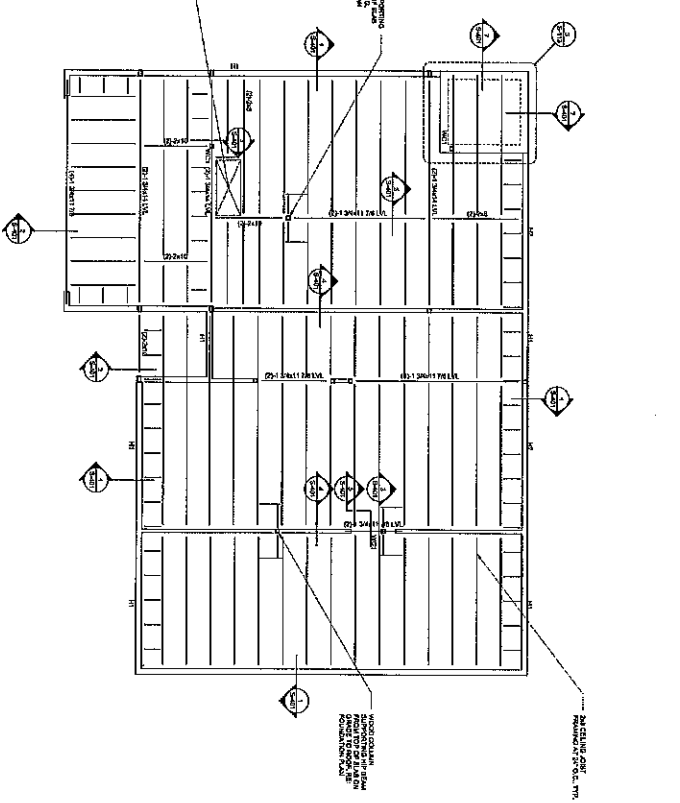
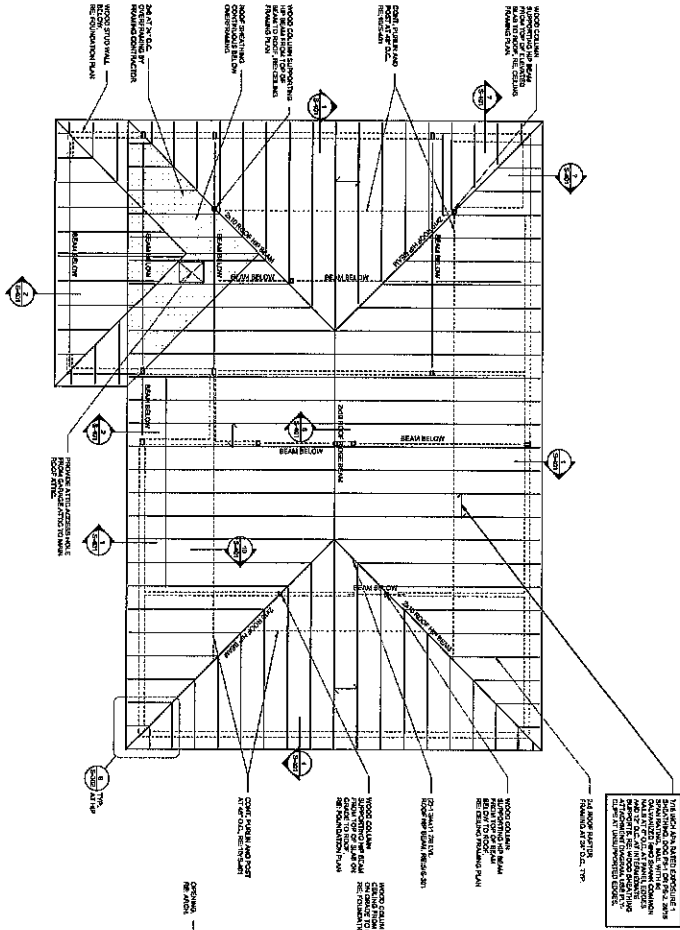
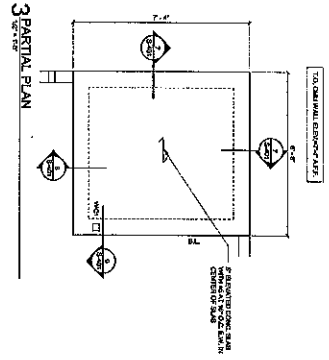


CHEROKEE NATION TALEQUAH HOUSING DEVELOPMENT - TYPES 1 TO 4
 1234 SOMEWHERE STREET TOWN, STATE ZIP
S-103
 TYPE 3 - FOUNDATION PLAN

blue river ARCHITECTS
 ARCHITECTS
 1234 SOMEWHERE STREET
 TOWN, STATE ZIP
 PHONE: (555) 555-5555
 FAX: (555) 555-5555
 WWW: WWW.BLUERIVERARCHITECTS.COM

S-103
 SHEET NUMBER
 TYPE 3 - FOUNDATION PLAN

S-103



1. REFER TO ARCHITECTURAL AND MECHANICAL DRAWINGS FOR SIZE AND LOCATION OF ALL OPENINGS.
 2. ALL DIMENSIONS ARE IN FEET AND INCHES.
 3. ALL DIMENSIONS ARE TO FACE UNLESS OTHERWISE NOTED.
 4. ALL DIMENSIONS ARE TO FACE UNLESS OTHERWISE NOTED.

1. ALL WALL ELEMENTS ARE 4" THICK UNLESS OTHERWISE NOTED.
 2. ALL WALL ELEMENTS ARE 4" THICK UNLESS OTHERWISE NOTED.

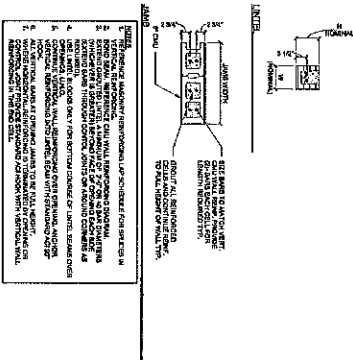
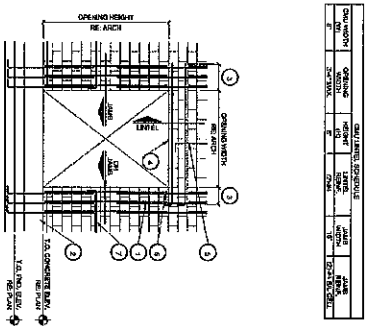
blue river ARCHITECTS
 A PROFESSIONAL CORPORATION
 1000 WEST 10TH AVENUE, SUITE 100
 DENVER, CO 80202
 (303) 733-1111
 www.blueriverarchitects.com

CHEROKEE NATION TALEQUAH HOUSING DEVELOPMENT - TYPES 1 TO 4
 1234 SOMEWHERE STREET TOWN, STATE ZIP
S-113
 TYPE 3 - CEILING FRAMING PLAN / ROOF FRAMING PLAN

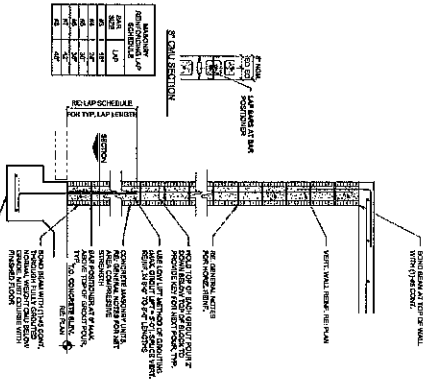
blueriver ARCHITECTS
 A PROFESSIONAL CORPORATION
 1000 WEST 10TH AVENUE, SUITE 100
 DENVER, CO 80202
 (303) 733-1111
 www.blueriverarchitects.com

S-113
 TYPE 3 - CEILING FRAMING PLAN / ROOF FRAMING PLAN

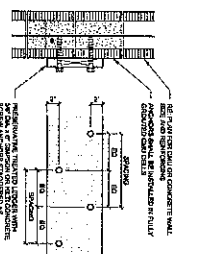
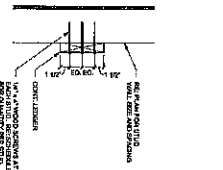
2 TYPICAL MASONRY WALL OPENING DIAGRAM AND SCHEDULE



1 CMU WALL REINFORCING DIAGRAM



LEADER TO WOOD JOIST	WOOD JOIST	WOOD LEDGER
2x6	2x12	2x6
2x8	2x12	2x8
2x10	2x12	2x10
2x12	2x12	2x12

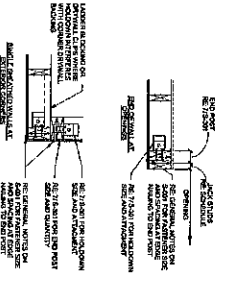


11 TYPICAL WOOD LEDGER DETAIL

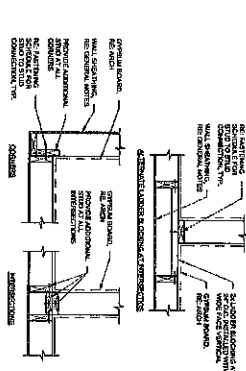
SPACING	MEMBER SIZE	MEMBER TYPE	MAX. NOTCH DEPTH	MAX. NOTCH WIDTH
12"	2x4	WOOD	1/4"	1/4"
12"	2x6	WOOD	1/4"	1/4"
12"	2x8	WOOD	1/4"	1/4"
12"	2x10	WOOD	1/4"	1/4"
12"	2x12	WOOD	1/4"	1/4"



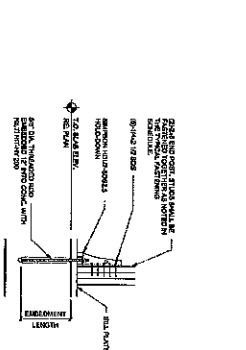
10 HOLES AND NOTCHES IN WOOD STUDS



9 WALL INTERSECTION AT HOLD-DOWNS DETAILS

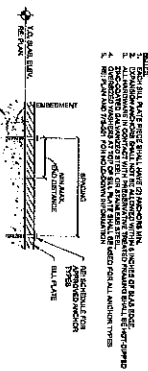


8 TYPICAL WALL INTERSECTION DETAIL



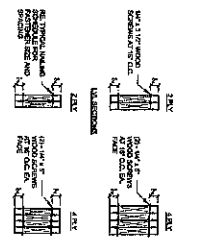
7 TYPICAL FOUNDATION HOLD-DOWN

ANCHOR TYPE	ANCHOR SIZE	ANCHOR SPACING	ANCHOR EMBEDMENT	ANCHOR END DISTANCE	ANCHOR END DISTANCE
STEEL ANCHOR	1/2"	12"	6"	6"	6"
STEEL ANCHOR	3/8"	12"	6"	6"	6"
STEEL ANCHOR	1/4"	12"	6"	6"	6"
STEEL ANCHOR	3/16"	12"	6"	6"	6"
STEEL ANCHOR	1/8"	12"	6"	6"	6"



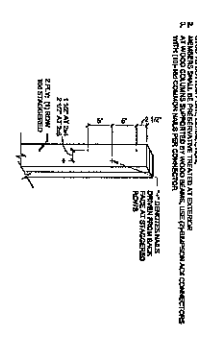
6 SILL PLATE ANCHOR SCHEDULE

SIZE	SPACING	SPACING	SPACING
4x4	12"	12"	12"
4x6	12"	12"	12"
4x8	12"	12"	12"
4x10	12"	12"	12"
4x12	12"	12"	12"



5 BUILD-UP BEAM SCHEDULE AND DETAIL

SIZE	SPACING	SPACING	SPACING
4x4	12"	12"	12"
4x6	12"	12"	12"
4x8	12"	12"	12"
4x10	12"	12"	12"
4x12	12"	12"	12"



4 BUILD-UP COLUMN SCHEDULE AND DETAIL

FRAMING HANGER	FRAMING HANGER	FRAMING HANGER
2x4	2x6	2x8
2x6	2x8	2x10
2x8	2x10	2x12



3 FRAMING HANGER SCHEDULE

CONNECTION	NAIL SIZE	NAIL SPACING
WOOD STUD TO JOIST	16D	12"
WOOD STUD TO WOOD LEDGER	16D	12"
WOOD STUD TO WOOD JOIST	16D	12"
WOOD STUD TO WOOD LEDGER	16D	12"
WOOD STUD TO WOOD JOIST	16D	12"
WOOD STUD TO WOOD LEDGER	16D	12"

2 TYPICAL FASTENING SCHEDULE

CONNECTION	NAIL SIZE
WOOD STUD TO JOIST	16D
WOOD STUD TO WOOD LEDGER	16D
WOOD STUD TO WOOD JOIST	16D
WOOD STUD TO WOOD LEDGER	16D
WOOD STUD TO WOOD JOIST	16D
WOOD STUD TO WOOD LEDGER	16D

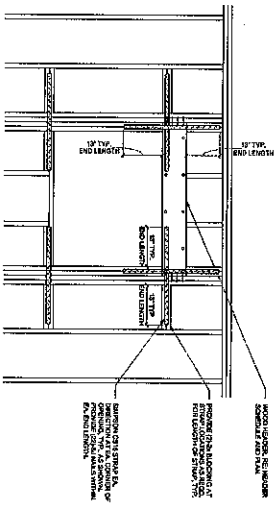
1 NAIL SIZE SCHEDULE

blue river ARCHITECTS
 501 West 10th Street, Suite 100
 Anchorage, Alaska 99501
 Phone: (907) 562-1111
 Fax: (907) 562-1112
 Website: www.blueriverarchitects.com

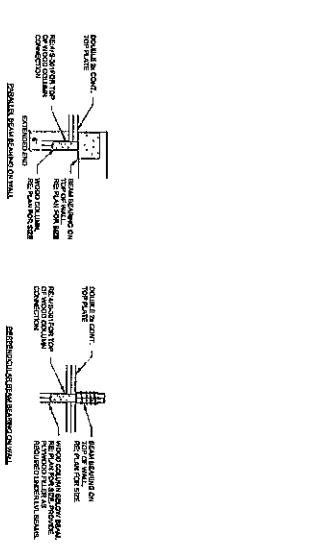
CHEROKEE NATION TALEQUAH HOUSING DEVELOPMENT - TYPES 1 TO 4
 1234 SOMEWHERE STREET TOWN, STATE ZIP
S-301
 TYPICAL WOOD DETAILS

blueriver ARCHITECTS
 A Member of the CH2M HILL GROUP
 10% CONSTRUCTION DOCUMENTS
 CH2M HILL GROUP
 1600 EAST 17TH AVENUE
 ANCHORAGE, ALASKA 99501
 PHONE: (907) 562-1111
 FAX: (907) 562-1112
 WWW.BLUERIVERARCHITECTS.COM

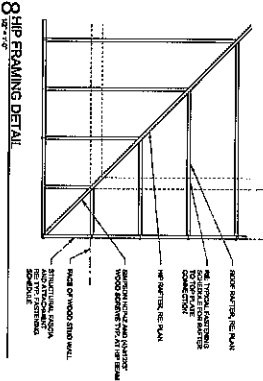
S-301



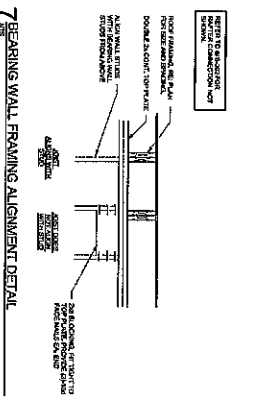
1 FORCE TRANSFER AROUND OPENINGS



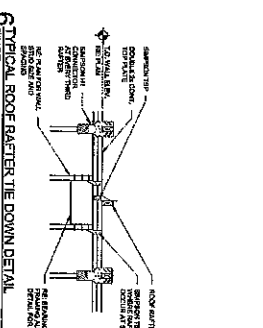
10 TYPICAL BEAM TO STUD WALL CONNECTIONS



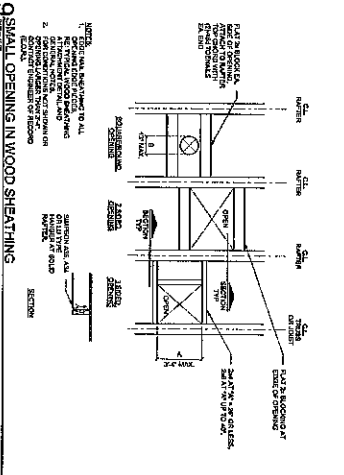
8 RIPS FRAMING DETAIL



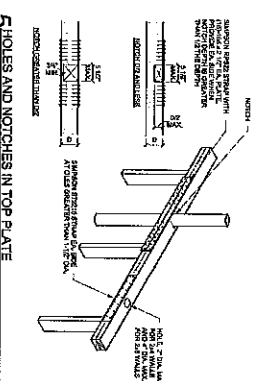
7 BEARING WALL FRAMING ALIGNMENT DETAIL



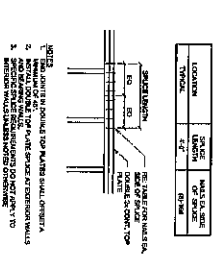
6 TYPICAL ROOF RAFTER THE DOWN DETAIL



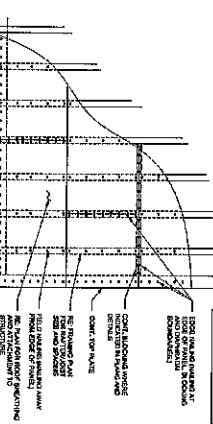
9 SMALL OPENING IN WOOD SHEATHING



5 HOLES AND NOTCHES IN TOP PLATE



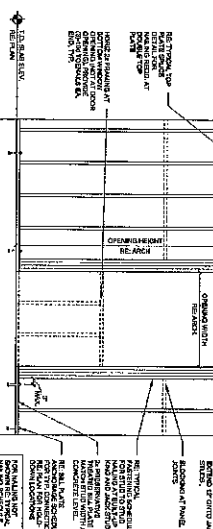
4 TYPICAL TOP PLATE SPLICE



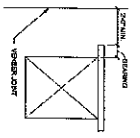
3 TYPICAL WOOD SHEATHING ATTACHMENT DIAGRAM

2 OPENING SCHEDULE

NO.	TYPE	LOCATION	SIZE	FINISH	REMARKS
1	DOOR	ENTRANCE	36" x 80"	WOOD	SEE DETAIL
2	WINDOW	LIVING ROOM	48" x 72"	WOOD	SEE DETAIL
3	WINDOW	KITCHEN	36" x 48"	WOOD	SEE DETAIL
4	WINDOW	BEDROOM	36" x 48"	WOOD	SEE DETAIL
5	WINDOW	BATH	36" x 48"	WOOD	SEE DETAIL
6	WINDOW	HALL	36" x 48"	WOOD	SEE DETAIL
7	WINDOW	CLOSET	36" x 48"	WOOD	SEE DETAIL



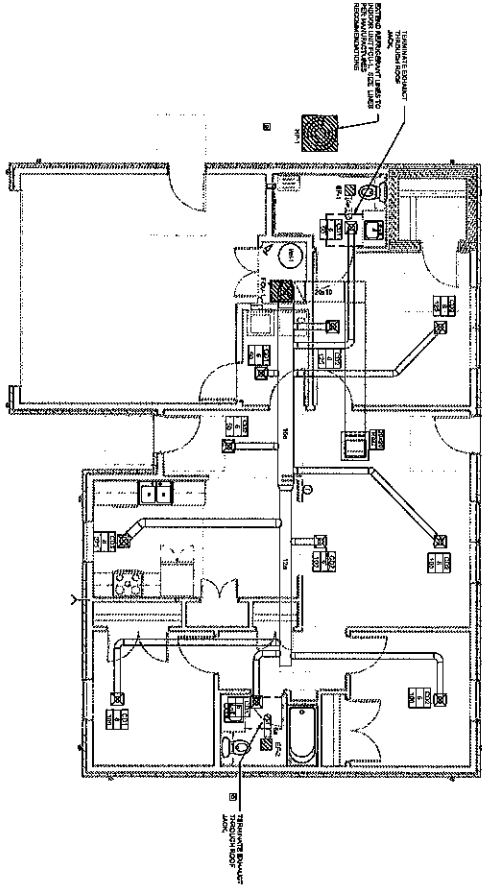
1 TYPICAL WALL OPENING DETAIL



MASONRY VENEER LOOSE LINTEL ANGLE SCHEDULE

CLASH NO.	ANGLE SIZE	FINISH
1	1/2" x 1/2"	WOOD
2	1/2" x 1/2"	WOOD

12 MASONRY LOOSE LINTEL ANGLE SCHEDULE



1. SEE PLAN FOR FANCOIL UNIT SCHEDULE

HEAT PUMP SCHEDULE

MARK	DESCRIPTION	UNIT	TYPE	LOCATION	STATUS	REMARKS
1	HEAT PUMP	1	1	1	1	1

FANCOIL UNIT SCHEDULE

MARK	DESCRIPTION	UNIT	TYPE	LOCATION	STATUS	REMARKS
1	FANCOIL UNIT	1	1	1	1	1

EXHAUST FAN SCHEDULE

MARK	DESCRIPTION	UNIT	TYPE	LOCATION	STATUS	REMARKS
1	EXHAUST FAN	1	1	1	1	1

AIR DEVICE SCHEDULE

MARK	DESCRIPTION	UNIT	TYPE	LOCATION	STATUS	REMARKS
1	AIR DEVICE	1	1	1	1	1

CHEROKEE NATION TAHLEQUAH HOUSING DEVELOPMENT - TYPE 3

M101
TYPE 3 HVAC PLAN AND SCHEDULES



MPW ENGINEERING, LLC
100 W. TULSA, OK 74103
TEL: 918.438.1111
WWW.MPWENGINEERING.COM

TYPE 3 HVAC
PLAN AND
SCHEDULES

M101



blue river
ARCHITECTS
A Native American Design Firm



**CHEROKEE NATION TAHLEQUAH HOUSING
DEVELOPMENT - TYPE 3**

**P001
PLUMBING NOTES**

MPW
MPW ENGINEERING, LLC
1318 W. 21st ST. SUITE 100
MARIETTA, GA 30067
404.471.2222
www.mpw-engineering.com

DATE: 12/23/22
DRAWN BY: JAC/AV
CHECKED BY: JAC/AV
PROJECT: CHEROKEE NATION
TAHLEQUAH HOUSING
DEVELOPMENT - TYPE 3
DOCUMENT: PLUMBING NOTES
SCALE: AS SHOWN

PLUMBING NOTES

CONTRACT NOTES

1. CONTRACTOR SHALL BE RESPONSIBLE FOR OBTAINING ALL NECESSARY PERMITS AND APPROVALS FROM THE APPLICABLE AGENCIES AND AGENCIES.
2. ALL WORK SHALL BE DONE IN ACCORDANCE WITH THE LATEST EDITIONS OF THE NATIONAL PLUMBING CODE (N.P.C.) AND THE INTERNATIONAL PLUMBING EXAMINERS' INSTITUTE (I.P.E.I.) CODES.
3. ALL WORK SHALL BE DONE IN ACCORDANCE WITH THE LATEST EDITIONS OF THE NATIONAL ELECTRICAL CODE (N.E.C.) AND THE INTERNATIONAL ELECTRICAL EXAMINERS' INSTITUTE (I.E.E.I.) CODES.
4. ALL WORK SHALL BE DONE IN ACCORDANCE WITH THE LATEST EDITIONS OF THE NATIONAL MECHANICAL CODE (N.M.C.) AND THE INTERNATIONAL MECHANICAL EXAMINERS' INSTITUTE (I.M.E.I.) CODES.
5. ALL WORK SHALL BE DONE IN ACCORDANCE WITH THE LATEST EDITIONS OF THE NATIONAL GAS CODE (N.G.C.) AND THE INTERNATIONAL GAS EXAMINERS' INSTITUTE (I.G.E.I.) CODES.
6. ALL WORK SHALL BE DONE IN ACCORDANCE WITH THE LATEST EDITIONS OF THE NATIONAL FIRE PROTECTION ASSOCIATION (N.F.P.A.) CODES.
7. ALL WORK SHALL BE DONE IN ACCORDANCE WITH THE LATEST EDITIONS OF THE NATIONAL FIRE PROTECTION ASSOCIATION (N.F.P.A.) CODES.
8. ALL WORK SHALL BE DONE IN ACCORDANCE WITH THE LATEST EDITIONS OF THE NATIONAL FIRE PROTECTION ASSOCIATION (N.F.P.A.) CODES.
9. ALL WORK SHALL BE DONE IN ACCORDANCE WITH THE LATEST EDITIONS OF THE NATIONAL FIRE PROTECTION ASSOCIATION (N.F.P.A.) CODES.
10. ALL WORK SHALL BE DONE IN ACCORDANCE WITH THE LATEST EDITIONS OF THE NATIONAL FIRE PROTECTION ASSOCIATION (N.F.P.A.) CODES.

NOTE: ALL WORK SHALL BE DONE IN ACCORDANCE WITH THE LATEST EDITIONS OF THE NATIONAL PLUMBING CODE (N.P.C.) AND THE INTERNATIONAL PLUMBING EXAMINERS' INSTITUTE (I.P.E.I.) CODES.

SHEET INDEX

- POTENTIAL HOT WATER
- POTENTIAL HOT WATER RETURN
- WWT

PIPE LINE

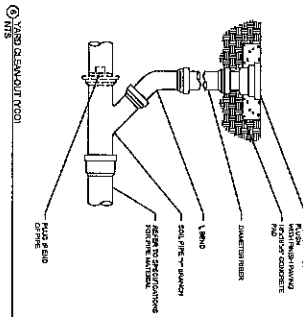
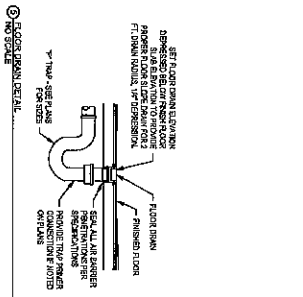
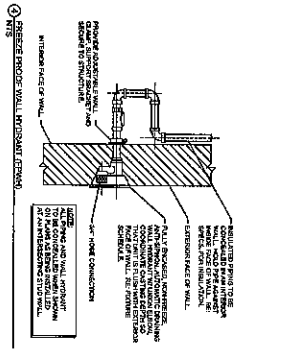
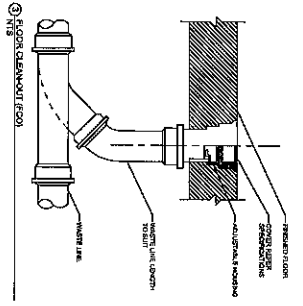
- JAC/AV POTENTIAL HOT WATER
- JAC/AV POTENTIAL HOT WATER RETURN
- JAC/AV WWT
- JAC/AV SANITARY WATER
- JAC/AV SANITARY WATER RETURN
- JAC/AV WWT

ABBREVIATIONS

Symbol	Abbreviation	Description
A	AW	ALUMINUM WATER
B	BV	BALANCE VALVE
C	CV	CHECK VALVE
D	DV	DRY VALVE
E	EV	EXHAUST VALVE
F	FV	FLOW VALVE
G	GV	GROUND VALVE
H	HV	HAND VALVE
I	IV	ISOLATION VALVE
J	JV	JUNCTION VALVE
K	KV	KEY VALVE
L	LV	LOCK VALVE
M	MV	MANUAL VALVE
N	NV	NON-RETURN VALVE
O	OV	OVERFLOW VALVE
P	PV	PISTON VALVE
Q	QV	QUICK-CLOSING VALVE
R	RV	RELIEF VALVE
S	SV	SHUT-OFF VALVE
T	TV	TRIP VALVE
U	UV	UNDERVALVE
V	VV	VALVE
W	WV	WATER VALVE
X	XV	CROSS VALVE
Y	YV	Y-VALVE
Z	ZV	ZONING VALVE

PIPE AND FITTINGS

AW	ALUMINUM WATER
BV	BALANCE VALVE
CV	CHECK VALVE
DV	DRY VALVE
EV	EXHAUST VALVE
FV	FLOW VALVE
GV	GROUND VALVE
HV	HAND VALVE
IV	ISOLATION VALVE
JV	JUNCTION VALVE
KV	KEY VALVE
LV	LOCK VALVE
MV	MANUAL VALVE
NV	NON-RETURN VALVE
OV	OVERFLOW VALVE
PV	PISTON VALVE
QV	QUICK-CLOSING VALVE
RV	RELIEF VALVE
SV	SHUT-OFF VALVE
TV	TRIP VALVE
UV	UNDERVALVE
VV	VALVE
WV	WATER VALVE
XV	CROSS VALVE
YV	Y-VALVE
ZV	ZONING VALVE

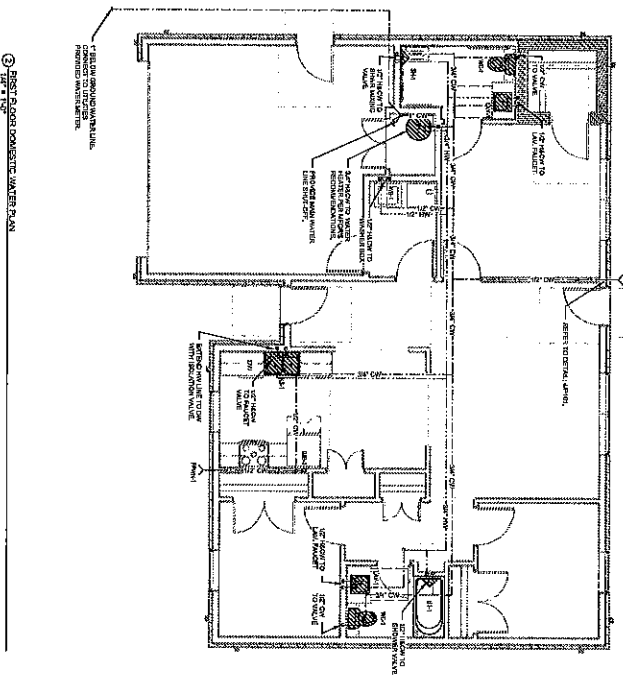
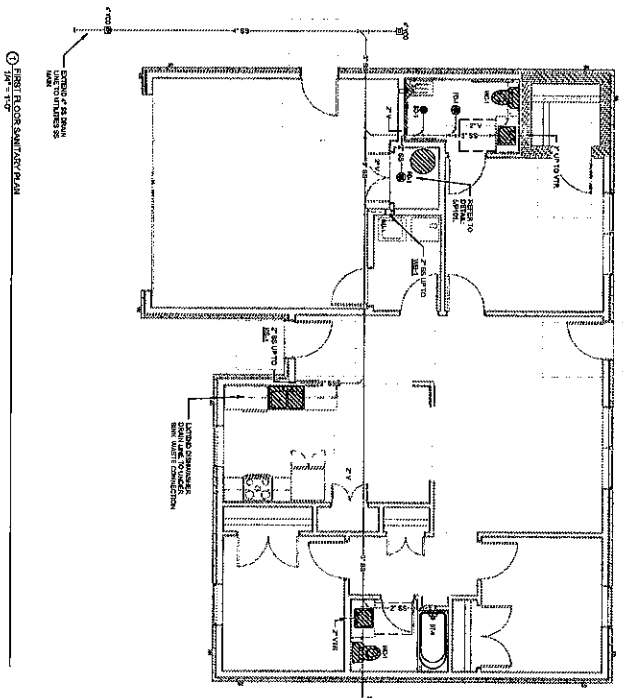


PLUMBING FIXTURE SCHEDULE

NO.	NAME	QUANTITY	REMARKS	UNIT	NO.	NAME	QUANTITY	REMARKS	UNIT
1	WATER CLOSET	1			1	WATER CLOSET	1		
2	BATH	1			2	BATH	1		
3	WASH SINK	1			3	WASH SINK	1		
4	SINK	1			4	SINK	1		
5	TOILET	1			5	TOILET	1		
6	SHOWER	1			6	SHOWER	1		
7	WATER HEATER	1			7	WATER HEATER	1		
8	WATER CLOSET	1			8	WATER CLOSET	1		
9	WATER CLOSET	1			9	WATER CLOSET	1		
10	WATER CLOSET	1			10	WATER CLOSET	1		

WATER HEATER SCHEDULE

NO.	NAME	QUANTITY	REMARKS	UNIT	NO.	NAME	QUANTITY	REMARKS	UNIT
1	WATER HEATER	1			1	WATER HEATER	1		
2	WATER HEATER	1			2	WATER HEATER	1		
3	WATER HEATER	1			3	WATER HEATER	1		



CHEROKEE NATION TAHLEQUAH HOUSING DEVELOPMENT - TYPE 3

P101
TYPE 3 PLUMBING PLANS



MPW ENGINEERING, LLC
1114 N. W. 10th Ave., Suite 200
Fort Lauderdale, FL 33304
Phone: (954) 574-1114
Fax: (954) 574-1115
www.mpw-engineering.com

TYPE 3 PLUMBING PLANS

P101