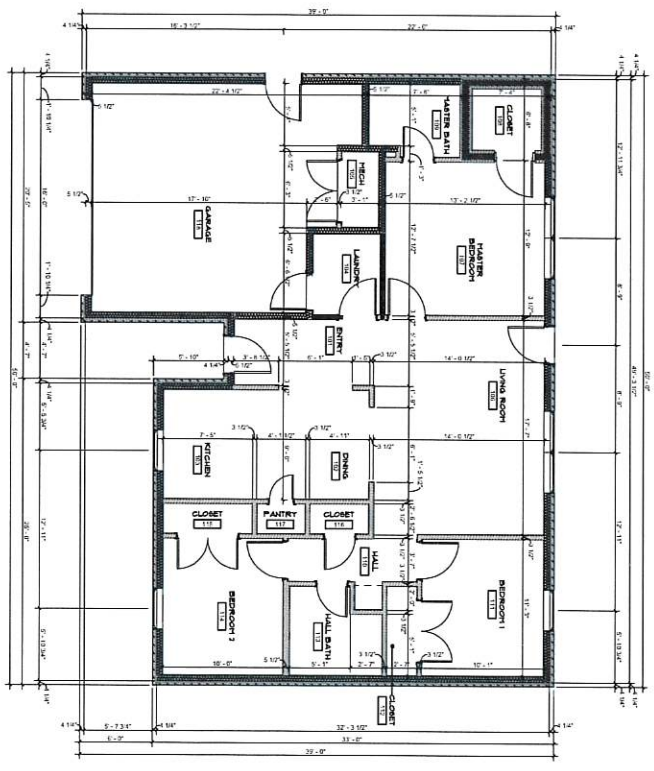


B FIRST FLOOR REFERENCE PLAN
1/4" = 1'-0"



A FIRST FLOOR DIMENSION PLAN
1/4" = 1'-0"

blue river ARCHITECTS
2010 Blue River Drive, Suite 100
Cherokee, Georgia 30513

CHEROKEE NATION TAHLEQUAH HOUSING DEVELOPMENT - TYPE 2
ADDRESS HERE
A101
FLOOR PLANS

blueriver ARCHITECTS
ARCHITECTS
2022/2015A
2022/2015A
CONSTRUCTION DOCUMENTS
DATE: 08/22/2022
DRAWN BY: JRM
CHECKED BY: JRM

FLOOR PLANS

A101

DESIGN PARAMETERS

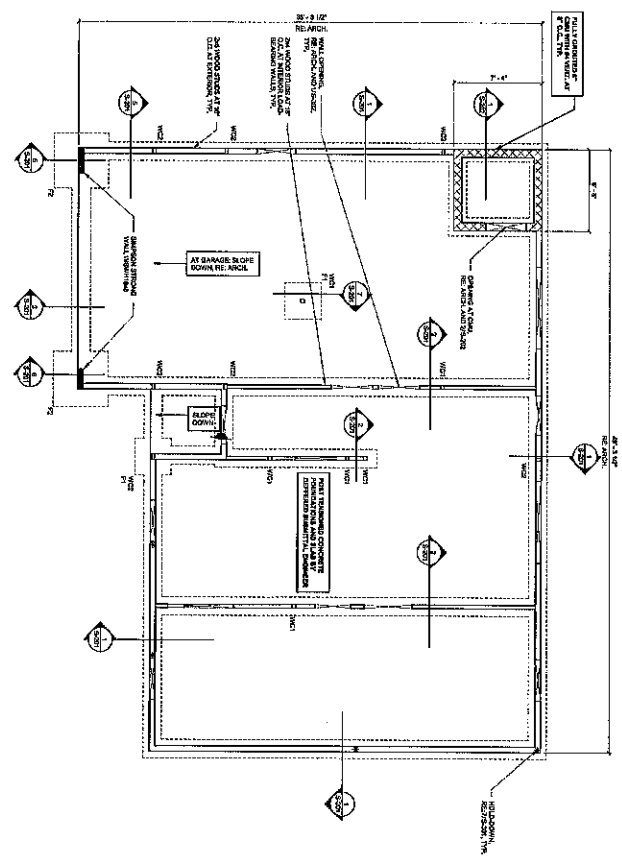
1. DESIGN CODES AND STANDARDS
 - A. INTERNATIONAL CODES AND STANDARDS
 - B. LOCAL CODES AND STANDARDS
2. MATERIALS
 - A. ALL MATERIALS SHALL BE OF THE QUALITY AND TYPE SPECIFIED IN THE CONTRACT DOCUMENTS.
 - B. ALL MATERIALS SHALL BE OF THE QUALITY AND TYPE SPECIFIED IN THE CONTRACT DOCUMENTS.
 - C. ALL MATERIALS SHALL BE OF THE QUALITY AND TYPE SPECIFIED IN THE CONTRACT DOCUMENTS.
3. FOUNDATION
 - A. FOUNDATION SHALL BE AS SPECIFIED IN THE CONTRACT DOCUMENTS.
 - B. FOUNDATION SHALL BE AS SPECIFIED IN THE CONTRACT DOCUMENTS.
 - C. FOUNDATION SHALL BE AS SPECIFIED IN THE CONTRACT DOCUMENTS.
4. WALLS
 - A. WALLS SHALL BE AS SPECIFIED IN THE CONTRACT DOCUMENTS.
 - B. WALLS SHALL BE AS SPECIFIED IN THE CONTRACT DOCUMENTS.
 - C. WALLS SHALL BE AS SPECIFIED IN THE CONTRACT DOCUMENTS.
5. ROOF
 - A. ROOF SHALL BE AS SPECIFIED IN THE CONTRACT DOCUMENTS.
 - B. ROOF SHALL BE AS SPECIFIED IN THE CONTRACT DOCUMENTS.
 - C. ROOF SHALL BE AS SPECIFIED IN THE CONTRACT DOCUMENTS.
6. INTERIORS
 - A. INTERIORS SHALL BE AS SPECIFIED IN THE CONTRACT DOCUMENTS.
 - B. INTERIORS SHALL BE AS SPECIFIED IN THE CONTRACT DOCUMENTS.
 - C. INTERIORS SHALL BE AS SPECIFIED IN THE CONTRACT DOCUMENTS.

ROOF REQUIREMENTS (MIN)		WALL REQUIREMENTS (MIN)	
TYPE	THICKNESS	TYPE	THICKNESS
1	4" CMU	1	8" CMU
2	6" CMU	2	12" CMU
3	8" CMU	3	16" CMU
4	10" CMU	4	20" CMU
5	12" CMU	5	24" CMU
6	14" CMU	6	28" CMU
7	16" CMU	7	32" CMU
8	18" CMU	8	36" CMU
9	20" CMU	9	40" CMU
10	22" CMU	10	44" CMU
11	24" CMU	11	48" CMU
12	26" CMU	12	52" CMU
13	28" CMU	13	56" CMU
14	30" CMU	14	60" CMU
15	32" CMU	15	64" CMU
16	34" CMU	16	68" CMU
17	36" CMU	17	72" CMU
18	38" CMU	18	76" CMU
19	40" CMU	19	80" CMU
20	42" CMU	20	84" CMU
21	44" CMU	21	88" CMU
22	46" CMU	22	92" CMU
23	48" CMU	23	96" CMU
24	50" CMU	24	100" CMU
25	52" CMU	25	104" CMU
26	54" CMU	26	108" CMU
27	56" CMU	27	112" CMU
28	58" CMU	28	116" CMU
29	60" CMU	29	120" CMU
30	62" CMU	30	124" CMU
31	64" CMU	31	128" CMU
32	66" CMU	32	132" CMU
33	68" CMU	33	136" CMU
34	70" CMU	34	140" CMU
35	72" CMU	35	144" CMU
36	74" CMU	36	148" CMU
37	76" CMU	37	152" CMU
38	78" CMU	38	156" CMU
39	80" CMU	39	160" CMU
40	82" CMU	40	164" CMU
41	84" CMU	41	168" CMU
42	86" CMU	42	172" CMU
43	88" CMU	43	176" CMU
44	90" CMU	44	180" CMU
45	92" CMU	45	184" CMU
46	94" CMU	46	188" CMU
47	96" CMU	47	192" CMU
48	98" CMU	48	196" CMU
49	100" CMU	49	200" CMU
50	102" CMU	50	204" CMU
51	104" CMU	51	208" CMU
52	106" CMU	52	212" CMU
53	108" CMU	53	216" CMU
54	110" CMU	54	220" CMU
55	112" CMU	55	224" CMU
56	114" CMU	56	228" CMU
57	116" CMU	57	232" CMU
58	118" CMU	58	236" CMU
59	120" CMU	59	240" CMU
60	122" CMU	60	244" CMU
61	124" CMU	61	248" CMU
62	126" CMU	62	252" CMU
63	128" CMU	63	256" CMU
64	130" CMU	64	260" CMU
65	132" CMU	65	264" CMU
66	134" CMU	66	268" CMU
67	136" CMU	67	272" CMU
68	138" CMU	68	276" CMU
69	140" CMU	69	280" CMU
70	142" CMU	70	284" CMU
71	144" CMU	71	288" CMU
72	146" CMU	72	292" CMU
73	148" CMU	73	296" CMU
74	150" CMU	74	300" CMU
75	152" CMU	75	304" CMU
76	154" CMU	76	308" CMU
77	156" CMU	77	312" CMU
78	158" CMU	78	316" CMU
79	160" CMU	79	320" CMU
80	162" CMU	80	324" CMU
81	164" CMU	81	328" CMU
82	166" CMU	82	332" CMU
83	168" CMU	83	336" CMU
84	170" CMU	84	340" CMU
85	172" CMU	85	344" CMU
86	174" CMU	86	348" CMU
87	176" CMU	87	352" CMU
88	178" CMU	88	356" CMU
89	180" CMU	89	360" CMU
90	182" CMU	90	364" CMU
91	184" CMU	91	368" CMU
92	186" CMU	92	372" CMU
93	188" CMU	93	376" CMU
94	190" CMU	94	380" CMU
95	192" CMU	95	384" CMU
96	194" CMU	96	388" CMU
97	196" CMU	97	392" CMU
98	198" CMU	98	396" CMU
99	200" CMU	99	400" CMU
100	202" CMU	100	404" CMU
101	204" CMU	101	408" CMU
102	206" CMU	102	412" CMU
103	208" CMU	103	416" CMU
104	210" CMU	104	420" CMU
105	212" CMU	105	424" CMU
106	214" CMU	106	428" CMU
107	216" CMU	107	432" CMU
108	218" CMU	108	436" CMU
109	220" CMU	109	440" CMU
110	222" CMU	110	444" CMU
111	224" CMU	111	448" CMU
112	226" CMU	112	452" CMU
113	228" CMU	113	456" CMU
114	230" CMU	114	460" CMU
115	232" CMU	115	464" CMU
116	234" CMU	116	468" CMU
117	236" CMU	117	472" CMU
118	238" CMU	118	476" CMU
119	240" CMU	119	480" CMU
120	242" CMU	120	484" CMU
121	244" CMU	121	488" CMU
122	246" CMU	122	492" CMU
123	248" CMU	123	496" CMU
124	250" CMU	124	500" CMU
125	252" CMU	125	504" CMU
126	254" CMU	126	508" CMU
127	256" CMU	127	512" CMU
128	258" CMU	128	516" CMU
129	260" CMU	129	520" CMU
130	262" CMU	130	524" CMU
131	264" CMU	131	528" CMU
132	266" CMU	132	532" CMU
133	268" CMU	133	536" CMU
134	270" CMU	134	540" CMU
135	272" CMU	135	544" CMU
136	274" CMU	136	548" CMU
137	276" CMU	137	552" CMU
138	278" CMU	138	556" CMU
139	280" CMU	139	560" CMU
140	282" CMU	140	564" CMU
141	284" CMU	141	568" CMU
142	286" CMU	142	572" CMU
143	288" CMU	143	576" CMU
144	290" CMU	144	580" CMU
145	292" CMU	145	584" CMU
146	294" CMU	146	588" CMU
147	296" CMU	147	592" CMU
148	298" CMU	148	596" CMU
149	300" CMU	149	600" CMU
150	302" CMU	150	604" CMU
151	304" CMU	151	608" CMU
152	306" CMU	152	612" CMU
153	308" CMU	153	616" CMU
154	310" CMU	154	620" CMU
155	312" CMU	155	624" CMU
156	314" CMU	156	628" CMU
157	316" CMU	157	632" CMU
158	318" CMU	158	636" CMU
159	320" CMU	159	640" CMU
160	322" CMU	160	644" CMU
161	324" CMU	161	648" CMU
162	326" CMU	162	652" CMU
163	328" CMU	163	656" CMU
164	330" CMU	164	660" CMU
165	332" CMU	165	664" CMU
166	334" CMU	166	668" CMU
167	336" CMU	167	672" CMU
168	338" CMU	168	676" CMU
169	340" CMU	169	680" CMU
170	342" CMU	170	684" CMU
171	344" CMU	171	688" CMU
172	346" CMU	172	692" CMU
173	348" CMU	173	696" CMU
174	350" CMU	174	700" CMU
175	352" CMU	175	704" CMU
176	354" CMU	176	708" CMU
177	356" CMU	177	712" CMU
178	358" CMU	178	716" CMU
179	360" CMU	179	720" CMU
180	362" CMU	180	724" CMU
181	364" CMU	181	728" CMU
182	366" CMU	182	732" CMU
183	368" CMU	183	736" CMU
184	370" CMU	184	740" CMU
185	372" CMU	185	744" CMU
186	374" CMU	186	748" CMU
187	376" CMU	187	752" CMU
188	378" CMU	188	756" CMU
189	380" CMU	189	760" CMU
190	382" CMU	190	764" CMU
191	384" CMU	191	768" CMU
192	386" CMU	192	772" CMU
193	388" CMU	193	776" CMU
194	390" CMU	194	780" CMU
195	392" CMU	195	784" CMU
196	394" CMU	196	788" CMU
197	396" CMU	197	792" CMU
198	398" CMU	198	796" CMU
199	400" CMU	199	800" CMU
200	402" CMU	200	804" CMU
201	404" CMU	201	808" CMU
202	406" CMU	202	812" CMU
203	408" CMU	203	816" CMU
204	410" CMU	204	820" CMU
205	412" CMU	205	824" CMU
206	414" CMU	206	828" CMU
207	416" CMU	207	832" CMU
208	418" CMU	208	836" CMU
209	420" CMU	209	840" CMU
210	422" CMU	210	844" CMU
211	424" CMU	211	848" CMU
212	426" CMU	212	852" CMU
213	428" CMU	213	856" CMU
214	430" CMU	214	860" CMU
215	432" CMU	215	864" CMU
216	434" CMU	216	868" CMU
217	436" CMU	217	872" CMU
218	438" CMU	218	876" CMU
219	440" CMU	219	880" CMU
220	442" CMU	220	884" CMU
221	444" CMU	221	888" CMU
222	446" CMU	222	892" CMU
223	448" CMU	223	896" CMU
224	450" CMU	224	900" CMU
225	452" CMU	225	904" CMU
226	454" CMU	226	908" CMU
227	456" CMU	227	912" CMU
228	458" CMU	228	916" CMU
229	460" CMU	229	920" CMU
230	462" CMU	230	924" CMU
231	464" CMU	231	928" CMU
232	466" CMU	232	932" CMU
233	468" CMU	233	936" CMU
234	470" CMU	234	940" CMU
235	472" CMU	235	944" CMU
236	474" CMU	236	948" CMU
237	476" CMU	237	952" CMU
238	478" CMU	238	956" CMU
239	480" CMU	239	960" CMU
240	482" CMU	240	964" CMU
241	484" CMU	241	968" CMU
242	486" CMU	242	972" CMU
243	488" CMU	243	976" CMU
244	490" CMU	244	980" CMU
245	492" CMU	245	

- EXPLANATION SYMBOLS:**
1. PERMANENT FOUNDATION
 2. PERMANENT FOUNDATION
 3. PERMANENT FOUNDATION
 4. PERMANENT FOUNDATION
 5. PERMANENT FOUNDATION
 6. PERMANENT FOUNDATION

THIS SEAL IS VALID FOR THE STATE OF NORTH CAROLINA

REGISTERED PROFESSIONAL ENGINEER
 STATE OF NORTH CAROLINA
 EXPIRES 12/31/2018



1 FOUNDATION PLAN - TYPE 2



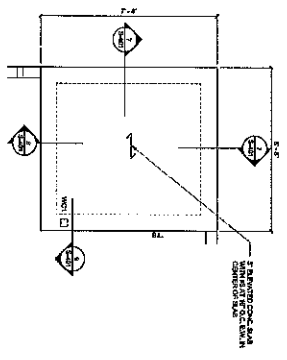
CHEROKEE NATION TALEQUAH HOUSING DEVELOPMENT - TYPES 1 TO 4
 1234 SOMEWHERE STREET TOWN, STATE ZIP
S-102
 TYPE 2 - FOUNDATION PLAN

blue river
 ARCHITECTS

DATE: 11/15/18
 PROJECT: CHEROKEE NATION TALEQUAH HOUSING DEVELOPMENT - TYPES 1 TO 4
 SHEET: S-102

S-102

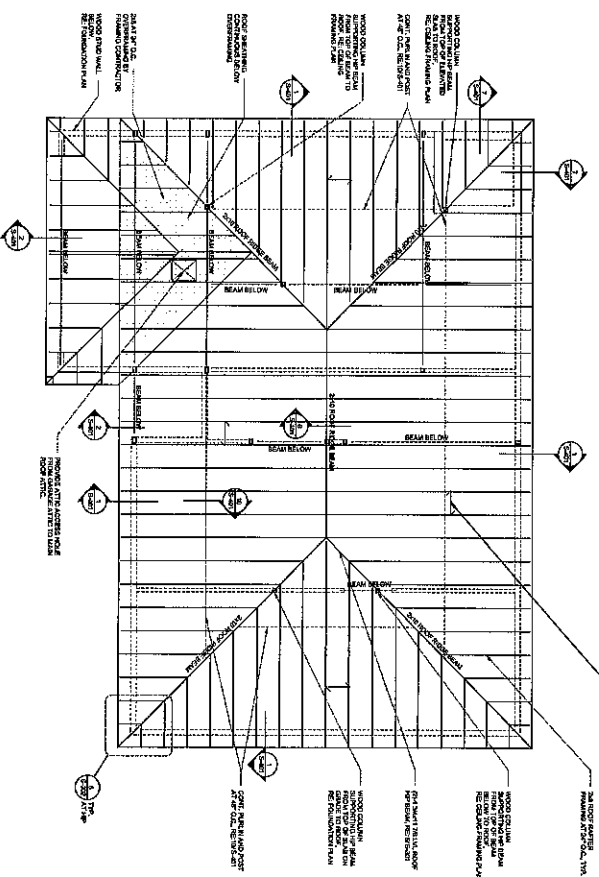
EXAMINE ALL SERVICES PLANS



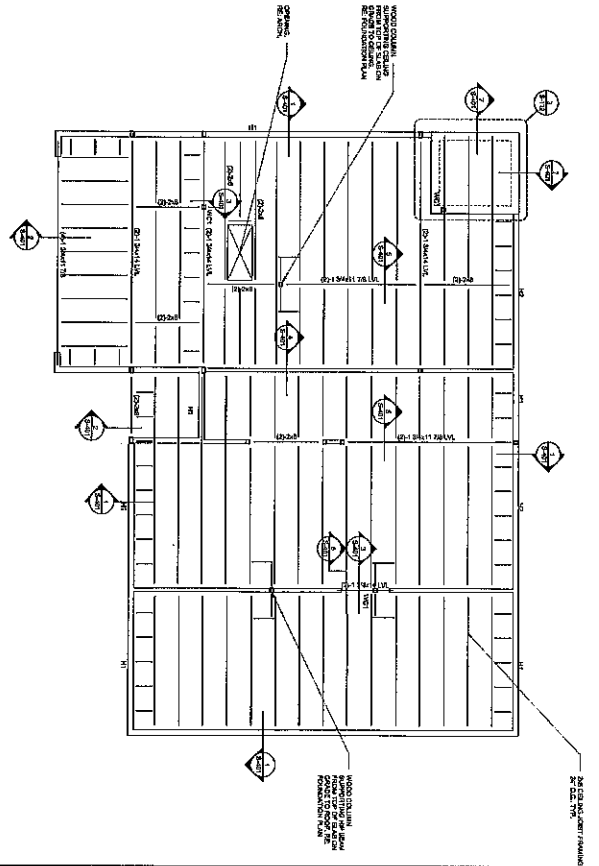
3 PARTIAL PLAN

EXERCISE CAREFUL ANALYSIS
 1. REFERENCE ARCHITECTURAL AND MEP DRAWINGS FOR SIZE AND LOCATION OF
 MEMBERS AND CONNECTIONS. VERIFY ALL DIMENSIONS AND LOCATIONS.
 2. VERIFY ALL DIMENSIONS AND LOCATIONS.
 3. VERIFY ALL DIMENSIONS AND LOCATIONS.
 4. VERIFY ALL DIMENSIONS AND LOCATIONS.

7.0. SCALE: UNLESS OTHERWISE NOTED
 8.0. SEE ALL NOTES AND ROOM SCHEDULES



2 ROOF FRAMING PLAN - TYPE 2



1 CEILING FRAMING PLAN - TYPE 2

blue river
 ARCHITECTS
 400 S. Main Street, Suite 100
 Cherokee, NC 28718
 (828) 293-1111
 www.blueriverarchitects.com

CHEROKEE NATION
 DEVELOPMENT

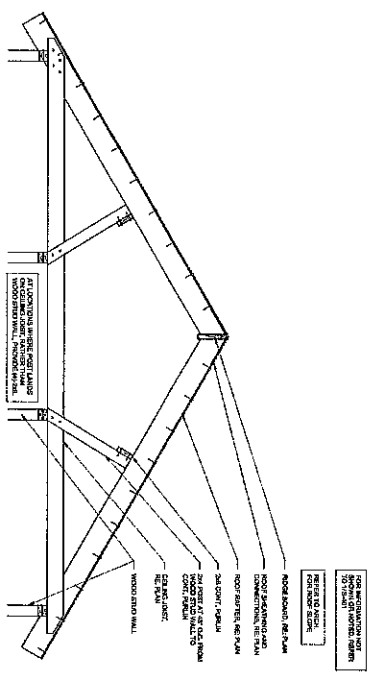
S-112
 TYPE 2 - CEILING FRAMING PLAN / ROOF FRAMING PLAN

CHEROKEE NATION TALEQUAH HOUSING DEVELOPMENT - TYPES 1 TO 4
 1234 SOMEWHERE STREET TOWN, STATE ZIP
S-112
 TYPE 2 - CEILING FRAMING PLAN / ROOF FRAMING PLAN

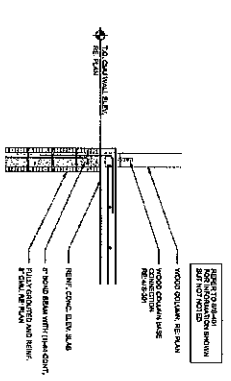
blueriver
 ARCHITECTS
 A PROFESSIONAL CORPORATION
 400 S. Main Street, Suite 100
 Cherokee, NC 28718
 (828) 293-1111
 www.blueriverarchitects.com

DATE: 10/15/2024
 DRAWN BY: J. SMITH
 CHECKED BY: M. JONES
 PROJECT NO: S-112

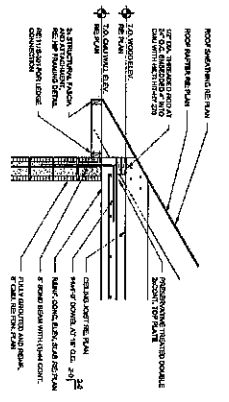
S-112



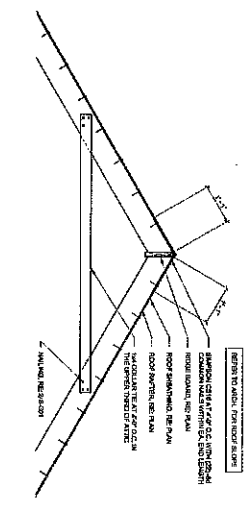
10 FRAMING DETAIL



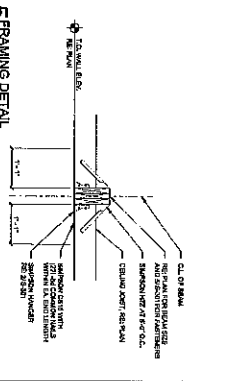
9 ROOF FRAMING AT SHELTER



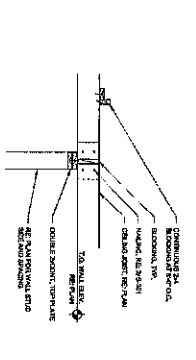
7 FRAMING DETAIL



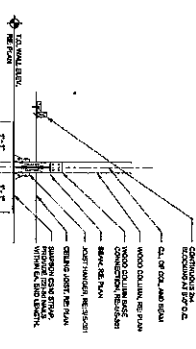
6 FRAMING DETAIL



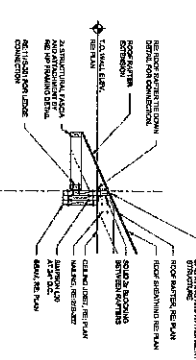
5 FRAMING DETAIL



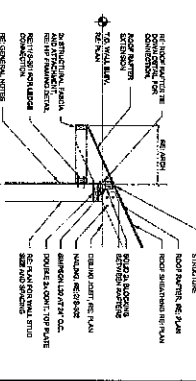
4 FRAMING DETAIL



3 FRAMING DETAIL



2 FRAMING DETAIL



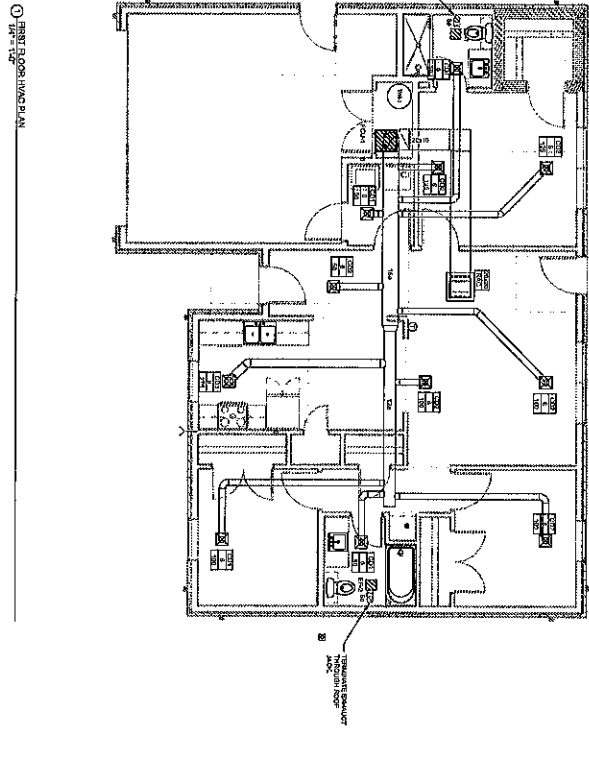
1 FRAMING DETAIL

blue river
ARCHITECTS
ARCHITECTS

CHEROKEE NATION TALEQUAH HOUSING DEVELOPMENT - TYPES 1 TO 4
1234 SOMEWHERE STREET TOWN, STATE ZIP
S-401
FRAMING DETAILS

blue river
ARCHITECTS
ARCHITECTS

S-401
FRAMING DETAILS



① FIRST FLOOR HVAC PLAN

HEAT PUMP SCHEDULE

UNIT	LOCATION	TYPE	MODEL	MANUFACTURER	STATUS
HP-1	Unit 101	Heat Pump	Model 101	Manufacturer 1	Installed
HP-2	Unit 102	Heat Pump	Model 102	Manufacturer 1	Installed
HP-3	Unit 103	Heat Pump	Model 103	Manufacturer 1	Installed
HP-4	Unit 104	Heat Pump	Model 104	Manufacturer 1	Installed
HP-5	Unit 105	Heat Pump	Model 105	Manufacturer 1	Installed
HP-6	Unit 106	Heat Pump	Model 106	Manufacturer 1	Installed
HP-7	Unit 107	Heat Pump	Model 107	Manufacturer 1	Installed
HP-8	Unit 108	Heat Pump	Model 108	Manufacturer 1	Installed
HP-9	Unit 109	Heat Pump	Model 109	Manufacturer 1	Installed
HP-10	Unit 110	Heat Pump	Model 110	Manufacturer 1	Installed

FANCOIL UNIT SCHEDULE

UNIT	LOCATION	TYPE	MODEL	MANUFACTURER	STATUS
FC-1	Unit 101	Fancoil Unit	Model 101	Manufacturer 1	Installed
FC-2	Unit 102	Fancoil Unit	Model 102	Manufacturer 1	Installed
FC-3	Unit 103	Fancoil Unit	Model 103	Manufacturer 1	Installed
FC-4	Unit 104	Fancoil Unit	Model 104	Manufacturer 1	Installed
FC-5	Unit 105	Fancoil Unit	Model 105	Manufacturer 1	Installed
FC-6	Unit 106	Fancoil Unit	Model 106	Manufacturer 1	Installed
FC-7	Unit 107	Fancoil Unit	Model 107	Manufacturer 1	Installed
FC-8	Unit 108	Fancoil Unit	Model 108	Manufacturer 1	Installed
FC-9	Unit 109	Fancoil Unit	Model 109	Manufacturer 1	Installed
FC-10	Unit 110	Fancoil Unit	Model 110	Manufacturer 1	Installed

EXHAUST FAN SCHEDULE

UNIT	LOCATION	TYPE	MODEL	MANUFACTURER	STATUS
EF-1	Unit 101	Exhaust Fan	Model 101	Manufacturer 1	Installed
EF-2	Unit 102	Exhaust Fan	Model 102	Manufacturer 1	Installed
EF-3	Unit 103	Exhaust Fan	Model 103	Manufacturer 1	Installed
EF-4	Unit 104	Exhaust Fan	Model 104	Manufacturer 1	Installed
EF-5	Unit 105	Exhaust Fan	Model 105	Manufacturer 1	Installed
EF-6	Unit 106	Exhaust Fan	Model 106	Manufacturer 1	Installed
EF-7	Unit 107	Exhaust Fan	Model 107	Manufacturer 1	Installed
EF-8	Unit 108	Exhaust Fan	Model 108	Manufacturer 1	Installed
EF-9	Unit 109	Exhaust Fan	Model 109	Manufacturer 1	Installed
EF-10	Unit 110	Exhaust Fan	Model 110	Manufacturer 1	Installed

AIR DEVICE SCHEDULE

UNIT	LOCATION	TYPE	MODEL	MANUFACTURER	STATUS
AD-1	Unit 101	Air Device	Model 101	Manufacturer 1	Installed
AD-2	Unit 102	Air Device	Model 102	Manufacturer 1	Installed
AD-3	Unit 103	Air Device	Model 103	Manufacturer 1	Installed
AD-4	Unit 104	Air Device	Model 104	Manufacturer 1	Installed
AD-5	Unit 105	Air Device	Model 105	Manufacturer 1	Installed
AD-6	Unit 106	Air Device	Model 106	Manufacturer 1	Installed
AD-7	Unit 107	Air Device	Model 107	Manufacturer 1	Installed
AD-8	Unit 108	Air Device	Model 108	Manufacturer 1	Installed
AD-9	Unit 109	Air Device	Model 109	Manufacturer 1	Installed
AD-10	Unit 110	Air Device	Model 110	Manufacturer 1	Installed



CHEROKEE NATION TAHLEQUAH HOUSING DEVELOPMENT - TYPE 2

M101
TYPE 2 HVAC PLAN AND SCHEDULES



MPW ENGINEERING, LLC
 1000 W. 10th Street, Suite 100
 Muskogee, Oklahoma 74403
 Phone: (918) 682-1111
 Fax: (918) 682-1112
 Email: info@mpweng.com
 Website: www.mpweng.com

M101
 TYPE 2 HVAC
 PLAN AND
 SCHEDULES
 SHEET NUMBER

PIPE AND FITTINGS

1	1/2"	1/2" GALV. STEEL
2	3/4"	3/4" GALV. STEEL
3	1"	1" GALV. STEEL
4	1 1/2"	1 1/2" GALV. STEEL
5	2"	2" GALV. STEEL
6	2 1/2"	2 1/2" GALV. STEEL
7	3"	3" GALV. STEEL
8	3 1/2"	3 1/2" GALV. STEEL
9	4"	4" GALV. STEEL
10	4 1/2"	4 1/2" GALV. STEEL
11	5"	5" GALV. STEEL
12	5 1/2"	5 1/2" GALV. STEEL
13	6"	6" GALV. STEEL
14	6 1/2"	6 1/2" GALV. STEEL
15	7"	7" GALV. STEEL
16	7 1/2"	7 1/2" GALV. STEEL
17	8"	8" GALV. STEEL
18	8 1/2"	8 1/2" GALV. STEEL
19	9"	9" GALV. STEEL
20	9 1/2"	9 1/2" GALV. STEEL
21	10"	10" GALV. STEEL
22	10 1/2"	10 1/2" GALV. STEEL
23	11"	11" GALV. STEEL
24	11 1/2"	11 1/2" GALV. STEEL
25	12"	12" GALV. STEEL
26	12 1/2"	12 1/2" GALV. STEEL
27	13"	13" GALV. STEEL
28	13 1/2"	13 1/2" GALV. STEEL
29	14"	14" GALV. STEEL
30	14 1/2"	14 1/2" GALV. STEEL
31	15"	15" GALV. STEEL
32	15 1/2"	15 1/2" GALV. STEEL
33	16"	16" GALV. STEEL
34	16 1/2"	16 1/2" GALV. STEEL
35	17"	17" GALV. STEEL
36	17 1/2"	17 1/2" GALV. STEEL
37	18"	18" GALV. STEEL
38	18 1/2"	18 1/2" GALV. STEEL
39	19"	19" GALV. STEEL
40	19 1/2"	19 1/2" GALV. STEEL
41	20"	20" GALV. STEEL
42	20 1/2"	20 1/2" GALV. STEEL
43	21"	21" GALV. STEEL
44	21 1/2"	21 1/2" GALV. STEEL
45	22"	22" GALV. STEEL
46	22 1/2"	22 1/2" GALV. STEEL
47	23"	23" GALV. STEEL
48	23 1/2"	23 1/2" GALV. STEEL
49	24"	24" GALV. STEEL
50	24 1/2"	24 1/2" GALV. STEEL
51	25"	25" GALV. STEEL
52	25 1/2"	25 1/2" GALV. STEEL
53	26"	26" GALV. STEEL
54	26 1/2"	26 1/2" GALV. STEEL
55	27"	27" GALV. STEEL
56	27 1/2"	27 1/2" GALV. STEEL
57	28"	28" GALV. STEEL
58	28 1/2"	28 1/2" GALV. STEEL
59	29"	29" GALV. STEEL
60	29 1/2"	29 1/2" GALV. STEEL
61	30"	30" GALV. STEEL
62	30 1/2"	30 1/2" GALV. STEEL
63	31"	31" GALV. STEEL
64	31 1/2"	31 1/2" GALV. STEEL
65	32"	32" GALV. STEEL
66	32 1/2"	32 1/2" GALV. STEEL
67	33"	33" GALV. STEEL
68	33 1/2"	33 1/2" GALV. STEEL
69	34"	34" GALV. STEEL
70	34 1/2"	34 1/2" GALV. STEEL
71	35"	35" GALV. STEEL
72	35 1/2"	35 1/2" GALV. STEEL
73	36"	36" GALV. STEEL
74	36 1/2"	36 1/2" GALV. STEEL
75	37"	37" GALV. STEEL
76	37 1/2"	37 1/2" GALV. STEEL
77	38"	38" GALV. STEEL
78	38 1/2"	38 1/2" GALV. STEEL
79	39"	39" GALV. STEEL
80	39 1/2"	39 1/2" GALV. STEEL
81	40"	40" GALV. STEEL
82	40 1/2"	40 1/2" GALV. STEEL
83	41"	41" GALV. STEEL
84	41 1/2"	41 1/2" GALV. STEEL
85	42"	42" GALV. STEEL
86	42 1/2"	42 1/2" GALV. STEEL
87	43"	43" GALV. STEEL
88	43 1/2"	43 1/2" GALV. STEEL
89	44"	44" GALV. STEEL
90	44 1/2"	44 1/2" GALV. STEEL
91	45"	45" GALV. STEEL
92	45 1/2"	45 1/2" GALV. STEEL
93	46"	46" GALV. STEEL
94	46 1/2"	46 1/2" GALV. STEEL
95	47"	47" GALV. STEEL
96	47 1/2"	47 1/2" GALV. STEEL
97	48"	48" GALV. STEEL
98	48 1/2"	48 1/2" GALV. STEEL
99	49"	49" GALV. STEEL
100	49 1/2"	49 1/2" GALV. STEEL
101	50"	50" GALV. STEEL
102	50 1/2"	50 1/2" GALV. STEEL
103	51"	51" GALV. STEEL
104	51 1/2"	51 1/2" GALV. STEEL
105	52"	52" GALV. STEEL
106	52 1/2"	52 1/2" GALV. STEEL
107	53"	53" GALV. STEEL
108	53 1/2"	53 1/2" GALV. STEEL
109	54"	54" GALV. STEEL
110	54 1/2"	54 1/2" GALV. STEEL
111	55"	55" GALV. STEEL
112	55 1/2"	55 1/2" GALV. STEEL
113	56"	56" GALV. STEEL
114	56 1/2"	56 1/2" GALV. STEEL
115	57"	57" GALV. STEEL
116	57 1/2"	57 1/2" GALV. STEEL
117	58"	58" GALV. STEEL
118	58 1/2"	58 1/2" GALV. STEEL
119	59"	59" GALV. STEEL
120	59 1/2"	59 1/2" GALV. STEEL
121	60"	60" GALV. STEEL
122	60 1/2"	60 1/2" GALV. STEEL
123	61"	61" GALV. STEEL
124	61 1/2"	61 1/2" GALV. STEEL
125	62"	62" GALV. STEEL
126	62 1/2"	62 1/2" GALV. STEEL
127	63"	63" GALV. STEEL
128	63 1/2"	63 1/2" GALV. STEEL
129	64"	64" GALV. STEEL
130	64 1/2"	64 1/2" GALV. STEEL
131	65"	65" GALV. STEEL
132	65 1/2"	65 1/2" GALV. STEEL
133	66"	66" GALV. STEEL
134	66 1/2"	66 1/2" GALV. STEEL
135	67"	67" GALV. STEEL
136	67 1/2"	67 1/2" GALV. STEEL
137	68"	68" GALV. STEEL
138	68 1/2"	68 1/2" GALV. STEEL
139	69"	69" GALV. STEEL
140	69 1/2"	69 1/2" GALV. STEEL
141	70"	70" GALV. STEEL
142	70 1/2"	70 1/2" GALV. STEEL
143	71"	71" GALV. STEEL
144	71 1/2"	71 1/2" GALV. STEEL
145	72"	72" GALV. STEEL
146	72 1/2"	72 1/2" GALV. STEEL
147	73"	73" GALV. STEEL
148	73 1/2"	73 1/2" GALV. STEEL
149	74"	74" GALV. STEEL
150	74 1/2"	74 1/2" GALV. STEEL
151	75"	75" GALV. STEEL
152	75 1/2"	75 1/2" GALV. STEEL
153	76"	76" GALV. STEEL
154	76 1/2"	76 1/2" GALV. STEEL
155	77"	77" GALV. STEEL
156	77 1/2"	77 1/2" GALV. STEEL
157	78"	78" GALV. STEEL
158	78 1/2"	78 1/2" GALV. STEEL
159	79"	79" GALV. STEEL
160	79 1/2"	79 1/2" GALV. STEEL
161	80"	80" GALV. STEEL
162	80 1/2"	80 1/2" GALV. STEEL
163	81"	81" GALV. STEEL
164	81 1/2"	81 1/2" GALV. STEEL
165	82"	82" GALV. STEEL
166	82 1/2"	82 1/2" GALV. STEEL
167	83"	83" GALV. STEEL
168	83 1/2"	83 1/2" GALV. STEEL
169	84"	84" GALV. STEEL
170	84 1/2"	84 1/2" GALV. STEEL
171	85"	85" GALV. STEEL
172	85 1/2"	85 1/2" GALV. STEEL
173	86"	86" GALV. STEEL
174	86 1/2"	86 1/2" GALV. STEEL
175	87"	87" GALV. STEEL
176	87 1/2"	87 1/2" GALV. STEEL
177	88"	88" GALV. STEEL
178	88 1/2"	88 1/2" GALV. STEEL
179	89"	89" GALV. STEEL
180	89 1/2"	89 1/2" GALV. STEEL
181	90"	90" GALV. STEEL
182	90 1/2"	90 1/2" GALV. STEEL
183	91"	91" GALV. STEEL
184	91 1/2"	91 1/2" GALV. STEEL
185	92"	92" GALV. STEEL
186	92 1/2"	92 1/2" GALV. STEEL
187	93"	93" GALV. STEEL
188	93 1/2"	93 1/2" GALV. STEEL
189	94"	94" GALV. STEEL
190	94 1/2"	94 1/2" GALV. STEEL
191	95"	95" GALV. STEEL
192	95 1/2"	95 1/2" GALV. STEEL
193	96"	96" GALV. STEEL
194	96 1/2"	96 1/2" GALV. STEEL
195	97"	97" GALV. STEEL
196	97 1/2"	97 1/2" GALV. STEEL
197	98"	98" GALV. STEEL
198	98 1/2"	98 1/2" GALV. STEEL
199	99"	99" GALV. STEEL
200	99 1/2"	99 1/2" GALV. STEEL
201	100"	100" GALV. STEEL
202	100 1/2"	100 1/2" GALV. STEEL
203	101"	101" GALV. STEEL
204	101 1/2"	101 1/2" GALV. STEEL
205	102"	102" GALV. STEEL
206	102 1/2"	102 1/2" GALV. STEEL
207	103"	103" GALV. STEEL
208	103 1/2"	103 1/2" GALV. STEEL
209	104"	104" GALV. STEEL
210	104 1/2"	104 1/2" GALV. STEEL
211	105"	105" GALV. STEEL
212	105 1/2"	105 1/2" GALV. STEEL
213	106"	106" GALV. STEEL
214	106 1/2"	106 1/2" GALV. STEEL
215	107"	107" GALV. STEEL
216	107 1/2"	107 1/2" GALV. STEEL
217	108"	108" GALV. STEEL
218	108 1/2"	108 1/2" GALV. STEEL
219	109"	109" GALV. STEEL
220	109 1/2"	109 1/2" GALV. STEEL
221	110"	110" GALV. STEEL
222	110 1/2"	110 1/2" GALV. STEEL
223	111"	111" GALV. STEEL
224	111 1/2"	111 1/2" GALV. STEEL
225	112"	112" GALV. STEEL
226	112 1/2"	112 1/2" GALV. STEEL
227	113"	113" GALV. STEEL
228	113 1/2"	113 1/2" GALV. STEEL
229	114"	114" GALV. STEEL
230	114 1/2"	114 1/2" GALV. STEEL
231	115"	115" GALV. STEEL
232	115 1/2"	115 1/2" GALV. STEEL
233	116"	116" GALV. STEEL
234	116 1/2"	116 1/2" GALV. STEEL
235	117"	117" GALV. STEEL
236	117 1/2"	117 1/2" GALV. STEEL
237	118"	118" GALV. STEEL
238	118 1/2"	118 1/2" GALV. STEEL
239	119"	119" GALV. STEEL
240	119 1/2"	119 1/2" GALV. STEEL
241	120"	120" GALV. STEEL
242	120 1/2"	120 1/2" GALV. STEEL
243	121"	121" GALV. STEEL
244	121 1/2"	121 1/2" GALV. STEEL
245	122"	122" GALV. STEEL
246	122 1/2"	122 1/2" GALV. STEEL
247	123"	123" GALV. STEEL
248	123 1/2"	123 1/2" GALV. STEEL
249	124"	124" GALV. STEEL
250	124 1/2"	124 1/2" GALV. STEEL
251	125"	125" GALV. STEEL
252	125 1/2"	125 1/2" GALV. STEEL
253	126"	126" GALV. STEEL
254	126 1/2"	126 1/2" GALV. STEEL
255	127"	127" GALV. STEEL
256	127 1/2"	127 1/2" GALV. STEEL
257	128"	128" GALV. STEEL
258	128 1/2"	128 1/2" GALV. STEEL
259	129"	129" GALV. STEEL
260	129 1/2"	129 1/2" GALV. STEEL
261	130"	130" GALV. STEEL
262	130 1/2"	130 1/2" GALV. STEEL
263	131"	131" GALV. STEEL
264	131 1/2"	131 1/2" GALV. STEEL
265	132"	132" GALV. STEEL
266	132 1/2"	132 1/2" GALV. STEEL
267	133"	133" GALV. STEEL
268	133 1/2"	133 1/2" GALV. STEEL
269	134"	134" GALV. STEEL
270	134 1/2"	134 1/2" GALV. STEEL
271	135"	135" GALV. STEEL
272	135 1/2"	135 1/2" GALV. STEEL
273	136"	136" GALV. STEEL
274	136 1/2"	136 1/2" GALV. STEEL
275	137"	137" GALV. STEEL
276	137 1/2"	137 1/2" GALV. STEEL
277	138"	138" GALV. STEEL
278	138 1/2"	138 1/2" GALV. STEEL
279	139"	139" GALV. STEEL
280	139 1/2"	139 1/2" GALV. STEEL
281	140"	140" GALV. STEEL
282	140 1/2"	140 1/2" GALV. STEEL
283	141"	141" GALV. STEEL
284	141 1/2"	141 1/2" GALV. STEEL
285	142"	142" GALV. STEEL
286	142 1/2"	142 1/2" GALV. STEEL
287	143"	143" GALV. STEEL
288	143 1/2"	143 1/2" GALV. STEEL
289	144"	144" GALV. STEEL
290	144 1/2"	144 1/2" GALV. STEEL
291	145"	145" GALV. STEEL
292	145 1/2"	145 1/2" GALV. STEEL
293	146"	146" GALV. STEEL
294	146 1/2"	146 1/2" GALV. STEEL
295	147"	147" GALV. STEEL
296	147 1/2"	147 1/2" GALV. STEEL
297	148"	148" GALV. STEEL
298	148 1/2"	148 1/2" GALV. STEEL
299	149"	149" GALV. STEEL
300	149 1/2"	149 1/2" GALV. STEEL
301	150"	150" GALV. STEEL
302	150 1/2"	150 1/2" GALV. STEEL
303	151"	151" GALV. STEEL
304	151 1/2"	151 1/2" GALV. STEEL
305	152"	152" GALV. STEEL
306	152 1/2"	152 1/2" GALV. STEEL
307	153"	153" GALV. STEEL
308	153 1/2"	153 1/2" GALV. STEEL
309	154"	154" GALV. STEEL
310	154 1/2"	154 1/2" GALV. STEEL
311	155"	155" GALV. STEEL
312	155 1/2"	155 1/2" GALV. STEEL
313	156"	156" GALV. STEEL
314	156 1/2"	156 1/2" GALV. STEEL
315	157"	157" GALV. STEEL
316	157 1/2"	157 1/2" GALV. STEEL
317	158"	158" GALV. STEEL
318	158 1/2"	158 1/2" GALV. STEEL
319	159"	159" GALV. STEEL
320	159 1/2"	159 1/2" GALV. STEEL
321	160"	160" GALV. STEEL
322	160 1/2"	160 1/2" GALV. STEEL
323	161"	161" GALV. STEEL
324	161 1/2"	161 1/2" GALV. STEEL
325	162"	162" GALV. STEEL
326	162 1/2"	162 1/2" GALV. STEEL
327	163"	163" GALV. STEEL
328	163 1/2"	163 1/2" GALV. STEEL
329	164"	164" GALV. STEEL

