

CONSTRUCTION DOCUMENTS

CHEROKEE NATION HOUSING GALITSODE SUBDIVISION

CITY:
THE CITY OF TANEY COUNTY
TANEY COUNTY, OKLAHOMA 74444
ATTN: DEWEES

WATER:
TANEY COUNTY PUBLIC WORKS AUTHORITY
TANEY COUNTY, OKLAHOMA 74444
ATTN: FRANK MCCLEGGED

SANITARY:
TANEY COUNTY PUBLIC WORKS AUTHORITY
TANEY COUNTY, OKLAHOMA 74444
ATTN: FRANK MCCLEGGED

FIRE:
TANEY COUNTY PUBLIC WORKS AUTHORITY
TANEY COUNTY, OKLAHOMA 74444
ATTN: FRANK MCCLEGGED

DESIGN:
TANEY COUNTY PUBLIC WORKS AUTHORITY
TANEY COUNTY, OKLAHOMA 74444
ATTN: FRANK MCCLEGGED

DATE:
NORTH-EAST OKLAHOMA PUBLIC UTILITIES AUTHORITY
TANEY COUNTY, OKLAHOMA 74444
ATTN: ROBERT EASTMAN

COMMUNICATIONS:
TANEY COUNTY PUBLIC WORKS AUTHORITY
TANEY COUNTY, OKLAHOMA 74444
ATTN: FRANK MCCLEGGED

ENGINEER:
JAMES K. WOODS, P.E.
TULSA, OKLAHOMA 74114
JAMES WOODS ENGINEERING, INC.
TULSA, OKLAHOMA 74114

GEOTECHNICAL:
SITE GEOLOGICAL REPORT PREPARED BY WALSH & PARTNERS LIMITED LIABILITY COMPANY, INC. (L.L.C.) DATED AUGUST 16, 2021.

SURVEY:
TOPOGRAPHY (SHADES) AND BOUNDARY SURVEY AND AN ACTUAL FIELD SURVEY PERFORMED BY BENNETT SURVEYING INC. DATED 06-27-2022.

BASES OF BEARINGS:
ALL BEARINGS FOR THIS SURVEY TO BE BASED ON GPS DATA HAVORS.

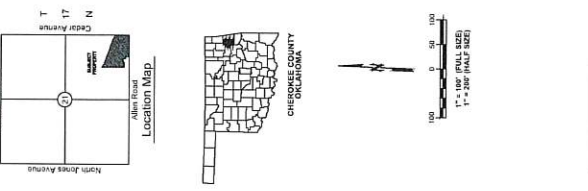
BENCHMARK 1:
BENCHMARK 1
NAD 83
ELEVATION 27
ELECTRICAL
E-200011239
E-200011238
E-200011182

BENCHMARK 2:
BENCHMARK 2
NAD 83
ELEVATION 27
ELECTRICAL
E-200011239
E-200011238
E-200011182

STORM WATER MANAGEMENT:
STORM WATER MANAGEMENT PLAN FOR THE CHEROKEE NATION HOUSING GALITSODE SUBDIVISION, TANEY COUNTY, OKLAHOMA. STORM WATER MANAGEMENT PLAN.



CAUTION
NOTICE TO CONTRACTOR
THE CONTRACTOR IS SPECIFICALLY CAUTIONED THE LOCATION AND DEPTH OF ALL UTILITIES SHOWN ON THIS PLAN AND THE LOCATION OF ALL SURVEY POINTS AND BENCHMARKS SHOWN ON THIS PLAN ARE BASED ON SURVEY DATA PROVIDED BY THE SURVEYOR. THE CONTRACTOR SHALL VERIFY THE LOCATION AND DEPTH OF ALL UTILITIES AND BENCHMARKS SHOWN ON THIS PLAN BEFORE BEGINNING CONSTRUCTION. THE CONTRACTOR SHALL CALL THE LOCAL UTILITY COMPANIES TO OBTAIN ADDITIONAL INFORMATION TO DETERMINE THE EXACT LOCATION OF ALL UTILITIES.



GRID STANDARDS

Town	22 E
Range	17 N
Section	20
Block	100-1
Lot	1-1
Sublot	1-1
Block	100-1
Lot	1-1
Sublot	1-1

SHEET LIST TABLE

SHEET NUMBER	SHEET TITLE
0000	COVER
0001	GENERAL NOTES
0002	GENERAL NOTES
0003	GENERAL NOTES
0004	GENERAL NOTES
0005	GENERAL NOTES
0006	GENERAL NOTES
0007	GENERAL NOTES
0008	GENERAL NOTES
0009	GENERAL NOTES
0010	GENERAL NOTES
0011	GENERAL NOTES
0012	GENERAL NOTES
0013	GENERAL NOTES
0014	GENERAL NOTES
0015	GENERAL NOTES
0016	GENERAL NOTES
0017	GENERAL NOTES
0018	GENERAL NOTES
0019	GENERAL NOTES
0020	GENERAL NOTES
0021	GENERAL NOTES
0022	GENERAL NOTES
0023	GENERAL NOTES
0024	GENERAL NOTES
0025	GENERAL NOTES
0026	GENERAL NOTES
0027	GENERAL NOTES
0028	GENERAL NOTES
0029	GENERAL NOTES
0030	GENERAL NOTES
0031	GENERAL NOTES
0032	GENERAL NOTES
0033	GENERAL NOTES
0034	GENERAL NOTES
0035	GENERAL NOTES
0036	GENERAL NOTES
0037	GENERAL NOTES
0038	GENERAL NOTES
0039	GENERAL NOTES
0040	GENERAL NOTES
0041	GENERAL NOTES
0042	GENERAL NOTES
0043	GENERAL NOTES
0044	GENERAL NOTES
0045	GENERAL NOTES
0046	GENERAL NOTES
0047	GENERAL NOTES
0048	GENERAL NOTES
0049	GENERAL NOTES
0050	GENERAL NOTES
0051	GENERAL NOTES
0052	GENERAL NOTES
0053	GENERAL NOTES
0054	GENERAL NOTES
0055	GENERAL NOTES
0056	GENERAL NOTES
0057	GENERAL NOTES
0058	GENERAL NOTES
0059	GENERAL NOTES
0060	GENERAL NOTES
0061	GENERAL NOTES
0062	GENERAL NOTES
0063	GENERAL NOTES
0064	GENERAL NOTES
0065	GENERAL NOTES
0066	GENERAL NOTES
0067	GENERAL NOTES
0068	GENERAL NOTES
0069	GENERAL NOTES
0070	GENERAL NOTES
0071	GENERAL NOTES
0072	GENERAL NOTES
0073	GENERAL NOTES
0074	GENERAL NOTES
0075	GENERAL NOTES
0076	GENERAL NOTES
0077	GENERAL NOTES
0078	GENERAL NOTES
0079	GENERAL NOTES
0080	GENERAL NOTES
0081	GENERAL NOTES
0082	GENERAL NOTES
0083	GENERAL NOTES
0084	GENERAL NOTES
0085	GENERAL NOTES
0086	GENERAL NOTES
0087	GENERAL NOTES
0088	GENERAL NOTES
0089	GENERAL NOTES
0090	GENERAL NOTES
0091	GENERAL NOTES
0092	GENERAL NOTES
0093	GENERAL NOTES
0094	GENERAL NOTES
0095	GENERAL NOTES
0096	GENERAL NOTES
0097	GENERAL NOTES
0098	GENERAL NOTES
0099	GENERAL NOTES
0100	GENERAL NOTES

blue river ARCHITECTS
A Public Architecture, Urbanist Firm

LANDSCAPE ARCHITECTS
SINCE 1988

ARCHITECTS
SINCE 1988

LANDSCAPE ARCHITECTS
SINCE 1988

LANDSCAPE ARCHITECTS
SINCE 1988

WALSH & PARTNERS
ENGINEERS

WALSH & PARTNERS
ENGINEERS

WALSH & PARTNERS
ENGINEERS

WALSH & PARTNERS
ENGINEERS

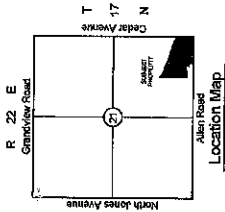
CHEROKEE HOUSING
TALIEQUAH OKLAHOMA

blue river ARCHITECTS
2240279
03/07/2023

CONSTRUCTION DOCUMENTS

COVER

C000
THREE DIMENSIONAL
CONSTRUCTION DOCUMENTS



Surveyor's Name
 J. F. [Name]
 [Address]
 [City, State, Zip]

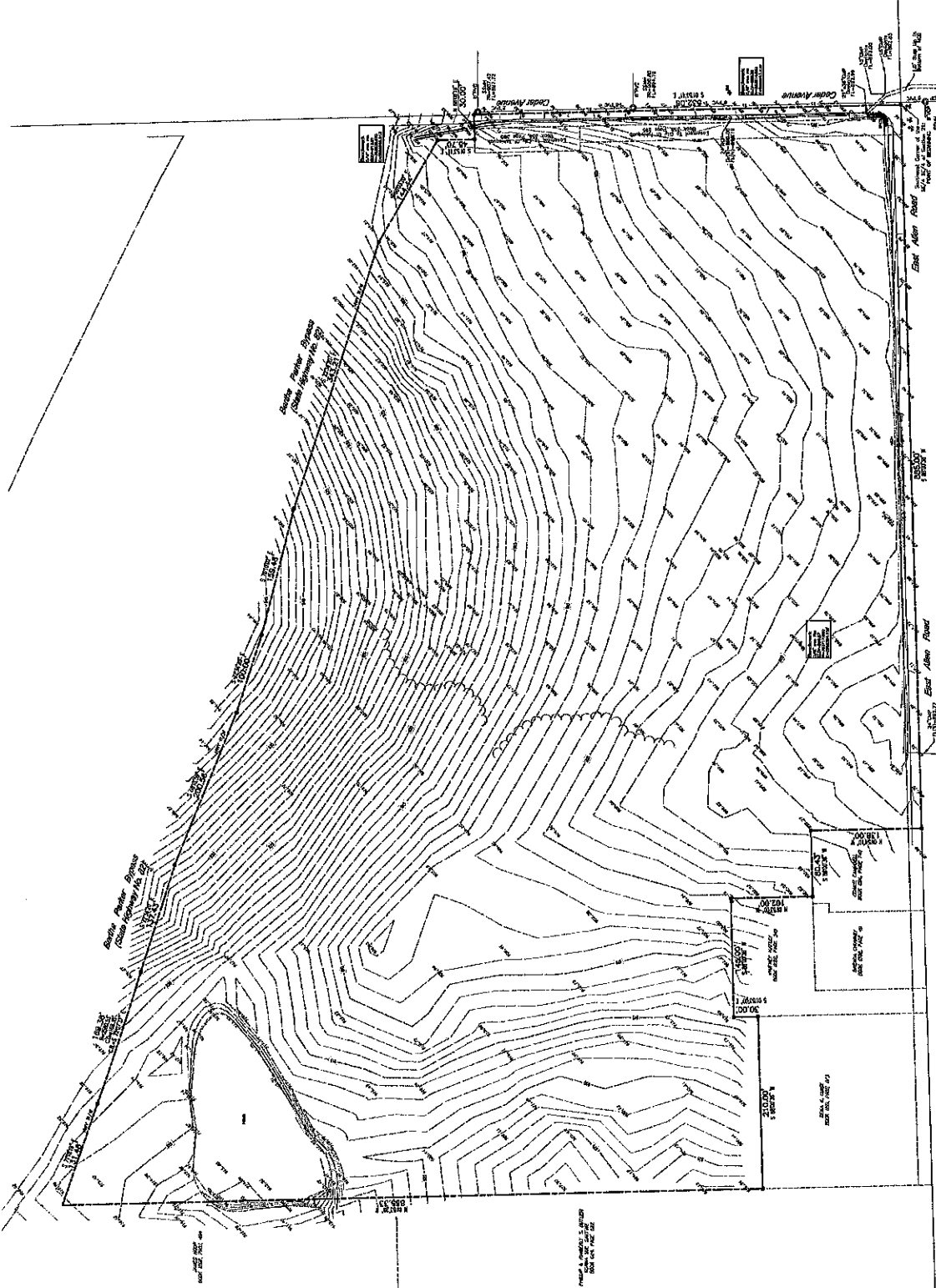
Local Interests
 [Text describing local interests and survey details]

Topographic Survey
 of a Part of
CN Housing
 City of Tahlequah
 Cherokee County, Oklahoma

Surveyor's Certificate
 [Text regarding the surveyor's qualifications and the date of the survey]



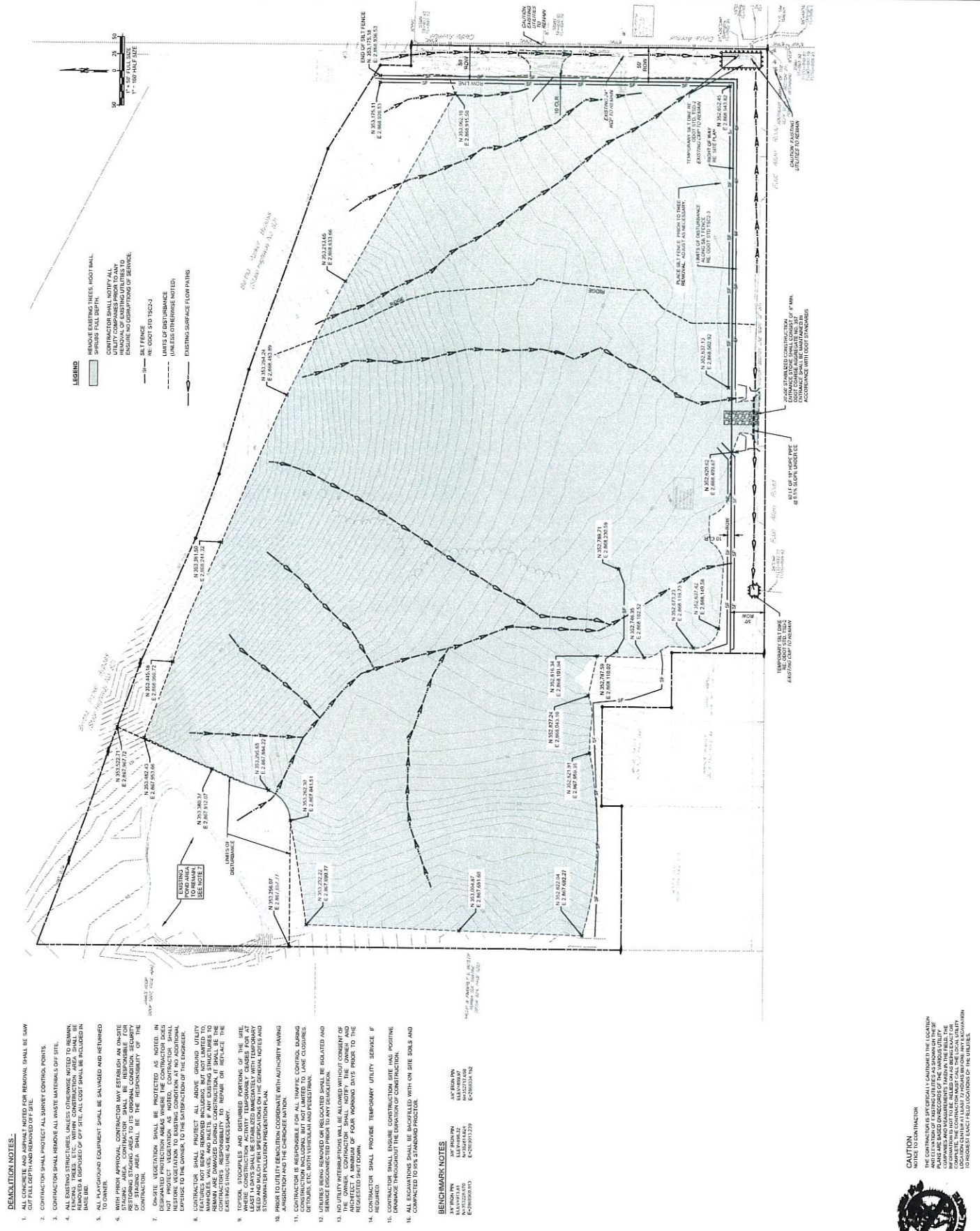
NO.	DATE	DESCRIPTION
1	1922	...
2	1923	...
3	1924	...
4	1925	...
5	1926	...
6	1927	...
7	1928	...
8	1929	...
9	1930	...
10	1931	...
11	1932	...
12	1933	...
13	1934	...
14	1935	...
15	1936	...
16	1937	...
17	1938	...
18	1939	...
19	1940	...
20	1941	...
21	1942	...
22	1943	...
23	1944	...
24	1945	...
25	1946	...
26	1947	...
27	1948	...
28	1949	...
29	1950	...
30	1951	...
31	1952	...
32	1953	...
33	1954	...
34	1955	...
35	1956	...
36	1957	...
37	1958	...
38	1959	...
39	1960	...
40	1961	...
41	1962	...
42	1963	...
43	1964	...
44	1965	...
45	1966	...
46	1967	...
47	1968	...
48	1969	...
49	1970	...
50	1971	...
51	1972	...
52	1973	...
53	1974	...
54	1975	...
55	1976	...
56	1977	...
57	1978	...
58	1979	...
59	1980	...
60	1981	...
61	1982	...
62	1983	...
63	1984	...
64	1985	...
65	1986	...
66	1987	...
67	1988	...
68	1989	...
69	1990	...
70	1991	...
71	1992	...
72	1993	...
73	1994	...
74	1995	...
75	1996	...
76	1997	...
77	1998	...
78	1999	...
79	2000	...
80	2001	...
81	2002	...
82	2003	...
83	2004	...
84	2005	...
85	2006	...
86	2007	...
87	2008	...
88	2009	...
89	2010	...
90	2011	...
91	2012	...
92	2013	...
93	2014	...
94	2015	...
95	2016	...
96	2017	...
97	2018	...
98	2019	...
99	2020	...
100	2021	...



THIS SHEET IS PART OF THE CONTINUATION OF THE SURVEY OF THE CITY OF TAHLEQUAH, OKLAHOMA, AND IS NOT TO BE CONSIDERED AS A COMPLETE SURVEY. THE SURVEYOR'S LIABILITY IS LIMITED TO THE ACCURACY OF THE DATA PROVIDED BY THE SURVEYOR. THE SURVEYOR'S LIABILITY IS LIMITED TO THE ACCURACY OF THE DATA PROVIDED BY THE SURVEYOR.

NOTES:
 1. THE SURVEYOR HAS CONDUCTED THIS SURVEY IN ACCORDANCE WITH THE SURVEYING ACT OF 1908, AS AMENDED.
 2. THE SURVEYOR HAS CONDUCTED THIS SURVEY IN ACCORDANCE WITH THE SURVEYING ACT OF 1908, AS AMENDED.
 3. THE SURVEYOR HAS CONDUCTED THIS SURVEY IN ACCORDANCE WITH THE SURVEYING ACT OF 1908, AS AMENDED.
 4. THE SURVEYOR HAS CONDUCTED THIS SURVEY IN ACCORDANCE WITH THE SURVEYING ACT OF 1908, AS AMENDED.
 5. THE SURVEYOR HAS CONDUCTED THIS SURVEY IN ACCORDANCE WITH THE SURVEYING ACT OF 1908, AS AMENDED.
 6. THE SURVEYOR HAS CONDUCTED THIS SURVEY IN ACCORDANCE WITH THE SURVEYING ACT OF 1908, AS AMENDED.
 7. THE SURVEYOR HAS CONDUCTED THIS SURVEY IN ACCORDANCE WITH THE SURVEYING ACT OF 1908, AS AMENDED.
 8. THE SURVEYOR HAS CONDUCTED THIS SURVEY IN ACCORDANCE WITH THE SURVEYING ACT OF 1908, AS AMENDED.
 9. THE SURVEYOR HAS CONDUCTED THIS SURVEY IN ACCORDANCE WITH THE SURVEYING ACT OF 1908, AS AMENDED.
 10. THE SURVEYOR HAS CONDUCTED THIS SURVEY IN ACCORDANCE WITH THE SURVEYING ACT OF 1908, AS AMENDED.



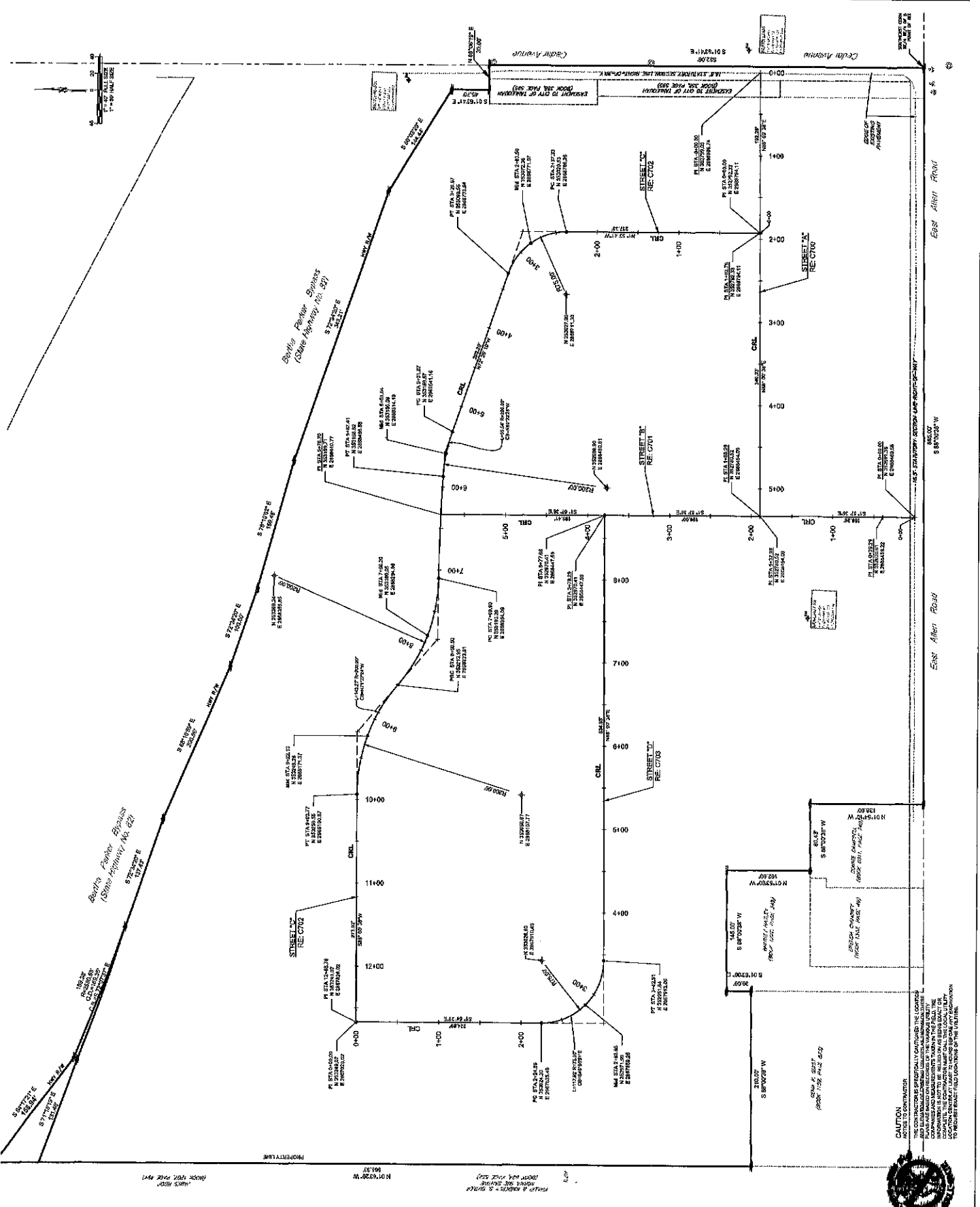


- DEMOLITION NOTES:**
1. ALL CONCRETE AND ASPHALT NOTED FOR REMOVAL SHALL BE SAW CUT FULL DEPTH AND REMOVED OFF SITE.
 2. CONTRACTOR SHALL PROTECT ALL SURVEY CONTROL POINTS.
 3. CONTRACTOR SHALL REMOVE ALL WASTE MATERIALS OFF SITE.
 4. ALL EXISTING STRUCTURES, UNLESS OTHERWISE NOTED TO REMAIN, SHALL BE DEMOLISHED AND REMOVED. ALL DEMOLITION SHALL BE IN ACCORDANCE WITH LOCAL AND STATE REGULATIONS. ALL DEMOLITION SHALL BE INCLUDED IN THE BIDDING LIST.
 5. ALL HAZARDOUS EQUIPMENT SHALL BE SALVAGED AND RETURNED TO OWNER.
 6. ALL EXISTING UTILITIES SHALL BE IDENTIFIED AND PROTECTED. CONTRACTOR SHALL BE RESPONSIBLE FOR THE IDENTIFICATION AND PROTECTION OF ALL UTILITIES. CONTRACTOR SHALL BE RESPONSIBLE FOR THE IDENTIFICATION AND PROTECTION OF ALL UTILITIES. CONTRACTOR SHALL BE RESPONSIBLE FOR THE IDENTIFICATION AND PROTECTION OF ALL UTILITIES. CONTRACTOR SHALL BE RESPONSIBLE FOR THE IDENTIFICATION AND PROTECTION OF ALL UTILITIES.
 7. EXISTING VEGETATION SHALL BE PROTECTED AS NOTED. IN AREAS WHERE VEGETATION IS TO BE REMOVED, CONTRACTOR SHALL NOT REMOVE VEGETATION TO EXISTING CONDITION. CONTRACTOR SHALL NOT REMOVE VEGETATION TO EXISTING CONDITION. CONTRACTOR SHALL NOT REMOVE VEGETATION TO EXISTING CONDITION. CONTRACTOR SHALL NOT REMOVE VEGETATION TO EXISTING CONDITION.
 8. CONTRACTOR SHALL MAINTAIN ACCESS TO ALL ADJACENT PROPERTIES. CONTRACTOR SHALL MAINTAIN ACCESS TO ALL ADJACENT PROPERTIES. CONTRACTOR SHALL MAINTAIN ACCESS TO ALL ADJACENT PROPERTIES. CONTRACTOR SHALL MAINTAIN ACCESS TO ALL ADJACENT PROPERTIES.
 9. CONTRACTOR SHALL MAINTAIN ACCESS TO ALL ADJACENT PROPERTIES. CONTRACTOR SHALL MAINTAIN ACCESS TO ALL ADJACENT PROPERTIES. CONTRACTOR SHALL MAINTAIN ACCESS TO ALL ADJACENT PROPERTIES. CONTRACTOR SHALL MAINTAIN ACCESS TO ALL ADJACENT PROPERTIES.
 10. CONTRACTOR SHALL MAINTAIN ACCESS TO ALL ADJACENT PROPERTIES. CONTRACTOR SHALL MAINTAIN ACCESS TO ALL ADJACENT PROPERTIES. CONTRACTOR SHALL MAINTAIN ACCESS TO ALL ADJACENT PROPERTIES. CONTRACTOR SHALL MAINTAIN ACCESS TO ALL ADJACENT PROPERTIES.
 11. CONTRACTOR SHALL MAINTAIN ACCESS TO ALL ADJACENT PROPERTIES. CONTRACTOR SHALL MAINTAIN ACCESS TO ALL ADJACENT PROPERTIES. CONTRACTOR SHALL MAINTAIN ACCESS TO ALL ADJACENT PROPERTIES. CONTRACTOR SHALL MAINTAIN ACCESS TO ALL ADJACENT PROPERTIES.
 12. UTILITIES BEING REMOVED OR RELOCATED SHALL BE ISOLATED AND IDENTIFIED PRIOR TO DEMOLITION. CONTRACTOR SHALL MAINTAIN ACCESS TO ALL ADJACENT PROPERTIES. CONTRACTOR SHALL MAINTAIN ACCESS TO ALL ADJACENT PROPERTIES.
 13. NO UTILITY INTERFERENCES WILL BE ALLOWED WITHOUT CONSENT OF THE OWNER. CONTRACTOR SHALL NOTIFY THE OWNER AND REQUESTED SHUT DOWN OF FOUR WORKING DAYS PRIOR TO THE DEMOLITION OF ANY UTILITY. CONTRACTOR SHALL MAINTAIN ACCESS TO ALL ADJACENT PROPERTIES. CONTRACTOR SHALL MAINTAIN ACCESS TO ALL ADJACENT PROPERTIES.
 14. CONTRACTOR SHALL PROVIDE TEMPORARY UTILITY SERVICE IF REQUIRED.
 15. CONTRACTOR SHALL DISBURSE CONSTRUCTION SITE (HAS POSITIVE DRAINAGE THROUGHOUT THE DURATION OF CONSTRUCTION).
 16. COMPACTED TO 95% STANDARD PROCTOR.

BENCHMARK NOTES:

1. BENCHMARK NO. 10112323
2. BENCHMARK NO. 10112323
3. BENCHMARK NO. 10112323

CAUTION:
NOTICE TO CONTRACTOR
THE CONTRACTOR IS SPECIFICALLY CAUTIONED THAT THE LOCATION OF ALL UTILITIES SHOWN ON THIS PLAN IS BASED ON RECORD OF THE VARIOUS UTILITY OWNERS. CONTRACTOR SHALL VERIFY THE LOCATION OF ALL UTILITIES PRIOR TO CONSTRUCTION. CONTRACTOR SHALL MAINTAIN ACCESS TO ALL ADJACENT PROPERTIES. CONTRACTOR SHALL MAINTAIN ACCESS TO ALL ADJACENT PROPERTIES.



CAUTION
THIS DOCUMENT IS THE PROPERTY OF BLUE RIVER ARCHITECTS. IT IS TO BE USED ONLY FOR THE PROJECT AND SITE SPECIFICALLY IDENTIFIED HEREIN. ANY REUSE, REPRODUCTION, OR DISTRIBUTION OF THIS DOCUMENT WITHOUT THE WRITTEN PERMISSION OF BLUE RIVER ARCHITECTS IS STRICTLY PROHIBITED. THE CONTRACTOR SHALL CALL THE LOCAL UTILITY COMPANIES TO VERIFY THE LOCATION AND DEPTH OF ALL UTILITIES PRIOR TO CONSTRUCTION. THE CONTRACTOR SHALL BE RESPONSIBLE FOR OBTAINING ALL NECESSARY PERMITS AND APPROVALS FROM THE LOCAL AUTHORITIES.

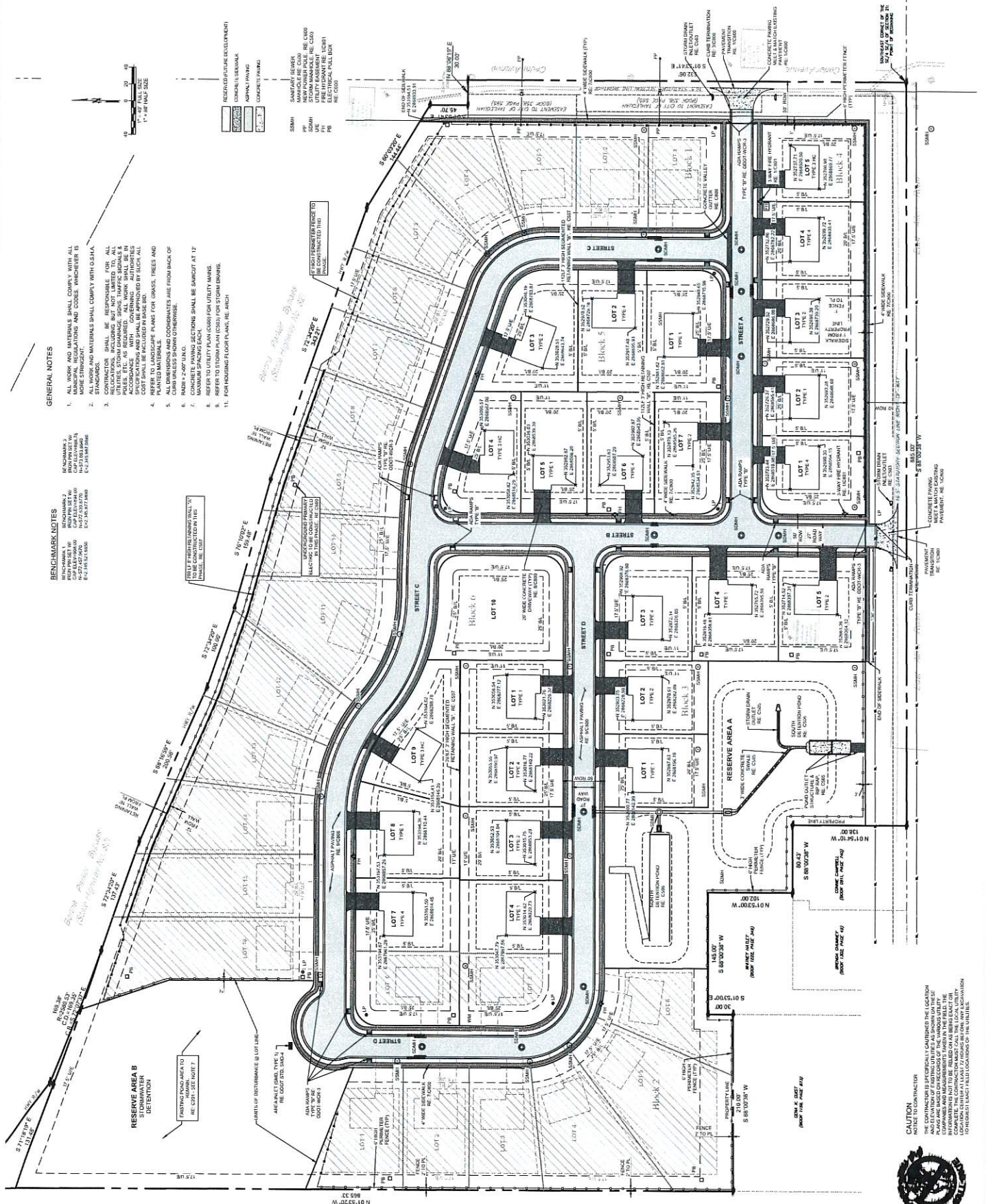


GENERAL NOTES

1. ALL WORK AND MATERIALS SHALL COMPLY WITH ALL APPLICABLE REGULATIONS AND CODES, WHICHEVER IS MORE STRINGENT.
2. ALL WORK AND MATERIALS SHALL COMPLY WITH G.S.H.A. REGULATIONS, INCLUDING BUT NOT LIMITED TO, ALL PERMITS, ETC. AS REQUIRED. ALL WORK SHALL BE IN ACCORDANCE WITH THE SPECIFICATIONS AND SHALL BE APPROVED BY EACH ALL APPLICABLE AGENCIES. ALL PLANTING, TREES AND PLANTED MATERIALS SHALL BE FROM LOCAL SOURCES.
3. ALL DIMENSIONS AND COORDINATES ARE FROM BACK OF LOT 19.
4. CONCRETE PAVING SECTIONS SHALL BE SAWCUT AT 12" MAXIMUM SPACING EACH.
5. REFER TO STORM PLAN (C400) FOR UTILITY MARKS.
6. REFER TO STORM PLAN (C400) FOR UTILITY MARKS.
7. FOR HOUSING FLOOR PLANS, RE ARCH.

BENCHMARK NOTES

- BENCHMARK 1**
BENCH MARK 1
ELEVATION: 102.00'
- BENCHMARK 2**
BENCH MARK 2
ELEVATION: 102.00'
- BENCHMARK 3**
BENCH MARK 3
ELEVATION: 102.00'



CAUTION
THE CONTRACTOR IS SPECIFICALLY CAUTIONED THE LOCATION OF ALL UTILITIES SHOWN ON THESE PLANS ARE BASED ON RECORDS OF THE AIRBORNE UTILITY SURVEY. THE CONTRACTOR SHALL VERIFY THE LOCATION OF ALL UTILITIES PRIOR TO ANY CONSTRUCTION. THE CONTRACTOR SHALL BE RESPONSIBLE FOR ANY DAMAGE TO UTILITIES CAUSED BY HIS WORK. THE CONTRACTOR SHALL BE RESPONSIBLE FOR THE COST OF ANY DAMAGE TO UTILITIES CAUSED BY HIS WORK.

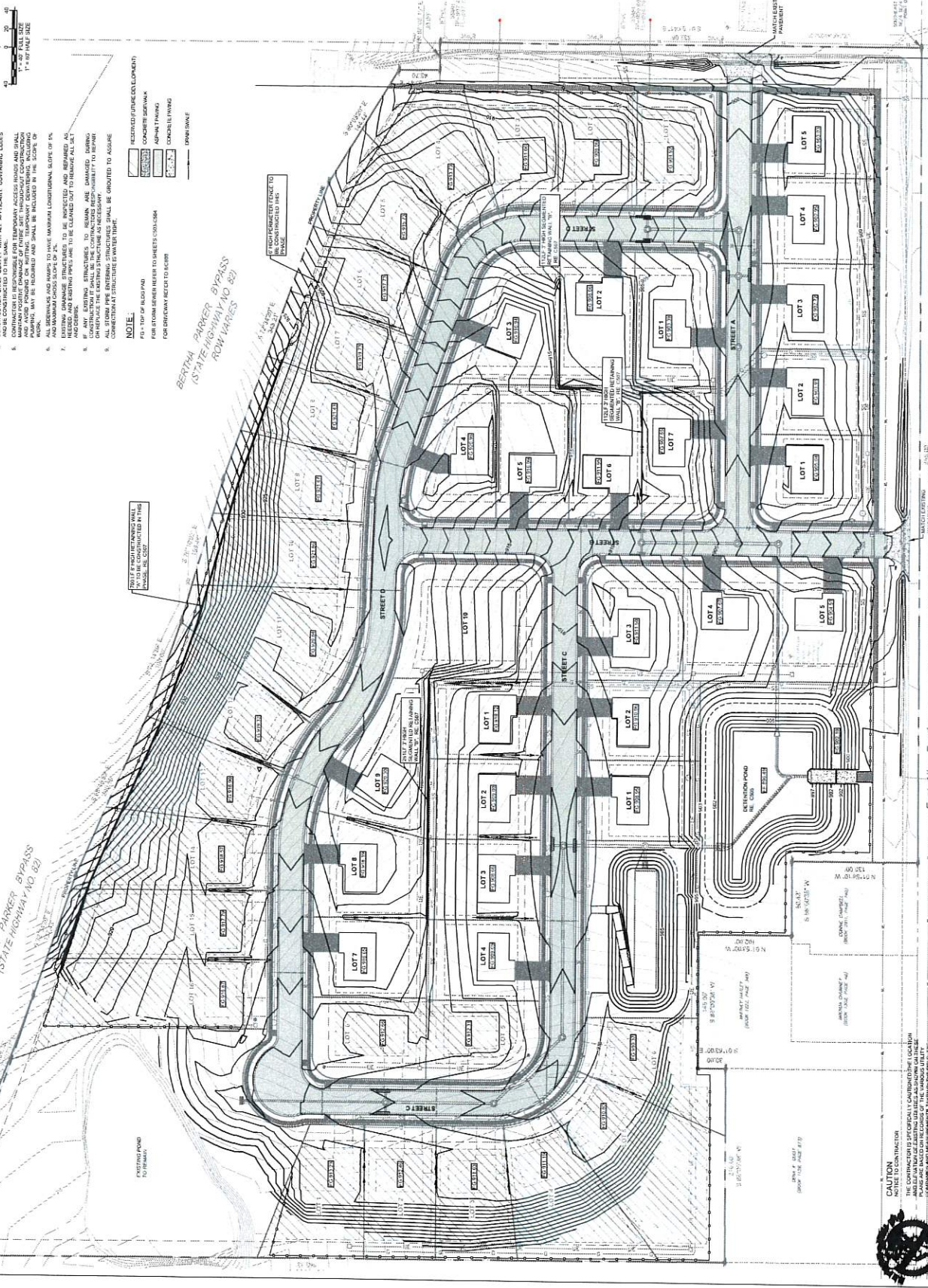
- GENERAL GRADING NOTES**
1. SITE GRADING SHALL BE PROTECTED UNTIL EROSION CONTROL MEASURES ARE INSTALLED AS SPECIFIED AND APPROVED BY LOCAL AUTHORITIES.
 2. FINISH GRADES SHALL BE 4" OR FLATTER UNLESS OTHERWISE NOTED OR THE SLOPES SHALL BE 4:1 OR FLATTER UNLESS OTHERWISE NOTED.
 3. CONSTRUCTION SHALL ASSURE POSITIVE DRAINAGE AWAY FROM BUILDINGS AND AWAY FROM ADJACENT PROPERTIES.
 4. CONSTRUCTION SHALL COMPLY WITH ALL APPLICABLE GOVERNING CODES AND ORDINANCES.
 5. CONSTRUCTION SHALL COMPLY WITH ALL APPLICABLE GOVERNING CODES AND ORDINANCES.
 6. ALL DRAINAGE AND SWALES TO HAVE MINIMUM LONGITUDINAL SLOPE OF 1% AND MINIMUM CROSS SLOPE OF 2%.
 7. ALL EXISTING AND PROPOSED UTILITY LINES SHALL BE MAINTAINED AND PROTECTED.
 8. IF ANY EXISTING STRUCTURES TO REMAIN ARE DAMAGED DURING CONSTRUCTION IT SHALL BE THE CONTRACTOR'S RESPONSIBILITY TO REPAIR OR REPLACE THEM.
 9. ALL STORM PIPE ENTERING STRUCTURES SHALL BE GRouted TO ASSURE CONNECTION AT STRUCTURE IS WATER TIGHT.

NOTE:

FOR FURTHER INFORMATION REFER TO SHEETS C500/01 THROUGH C500/04 FOR DRIVEWAY REFER TO B500/01

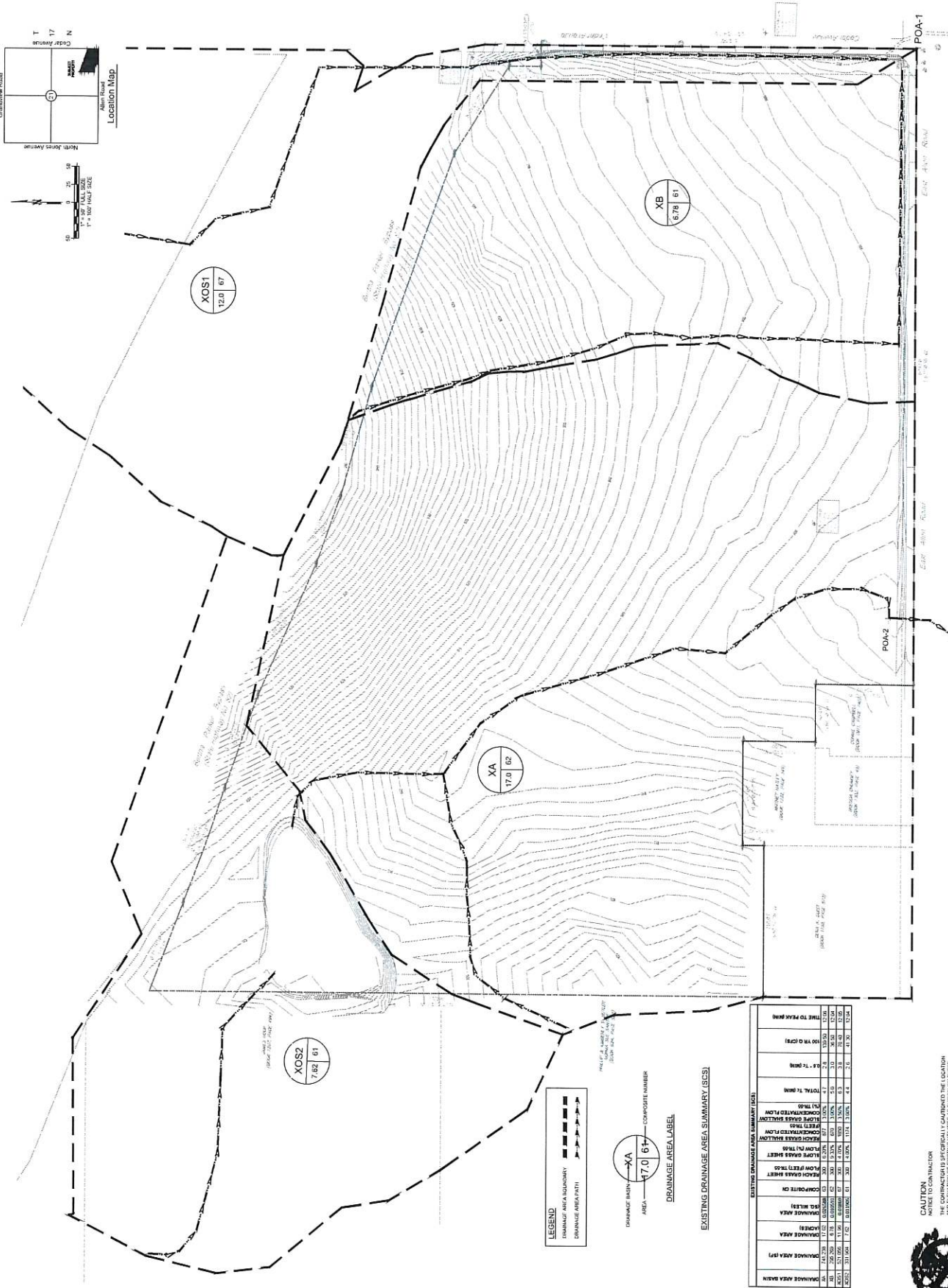
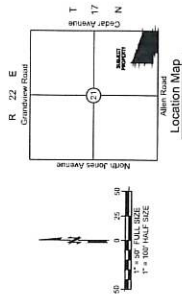
RESERVED FUTURE DEVELOPMENT	CONCRETE SUBGRADE
ASPHALT PAVING	GRAVEL PAVING
OPEN SPACE	

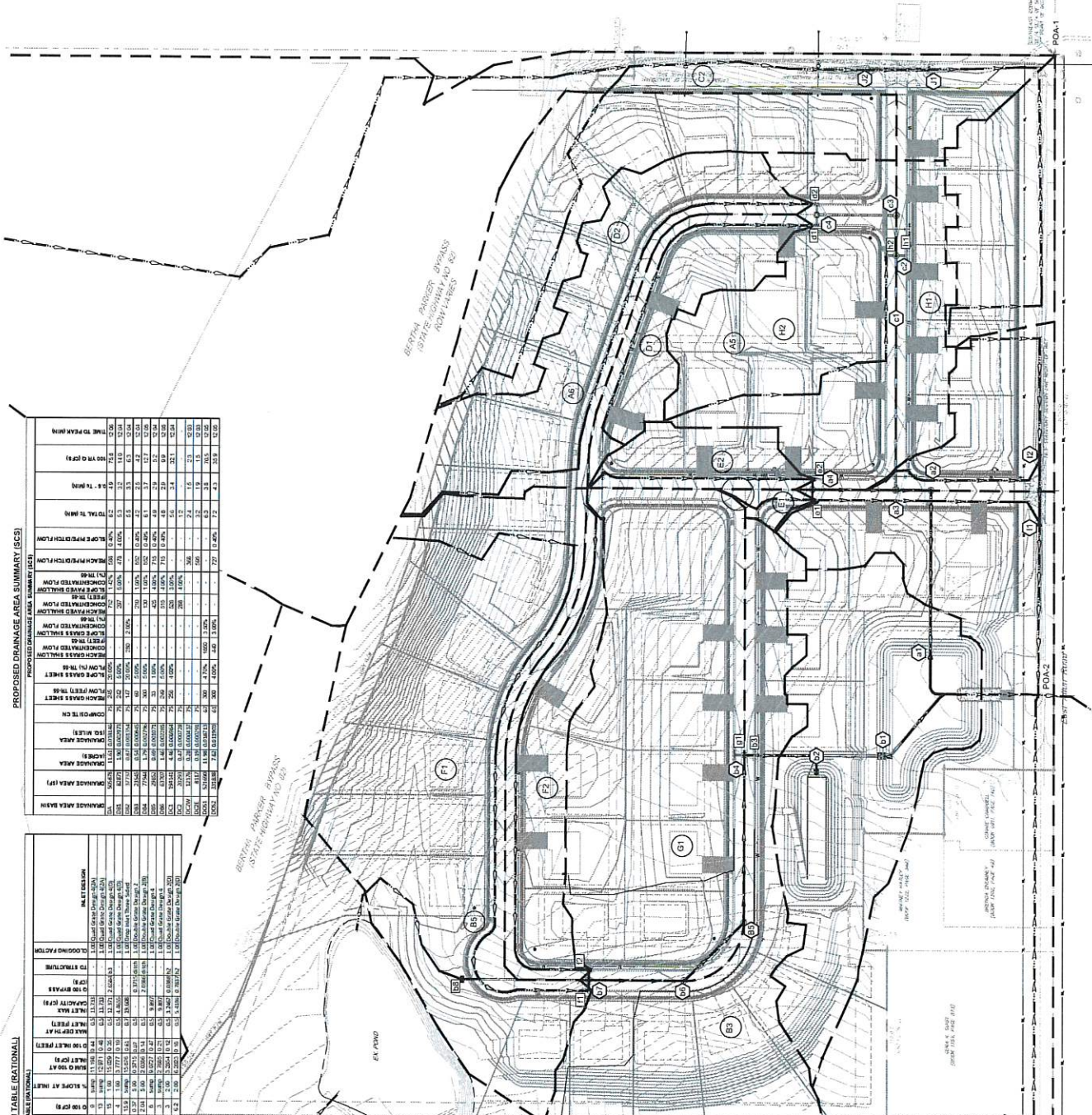
- BENCHMARK NOTES**
- BENCHMARK 1: SOUTH BETA POINT 100.000
 - BENCHMARK 2: SOUTH BETA POINT 100.000
 - BENCHMARK 3: SOUTH BETA POINT 100.000



CAUTION
NOTICE TO CONTRACTOR
THIS PLAN IS A PRELIMINARY DESIGN AND IS SUBJECT TO CHANGE WITHOUT NOTICE. THE CONTRACTOR SHALL BE RESPONSIBLE FOR VERIFYING ALL DIMENSIONS AND CONDITIONS ON THE SITE. THE CONTRACTOR SHALL BE RESPONSIBLE FOR OBTAINING ALL NECESSARY PERMITS AND APPROVALS FROM THE LOCAL AUTHORITIES. THE CONTRACTOR SHALL BE RESPONSIBLE FOR PROTECTING ALL EXISTING UTILITIES AND STRUCTURES. THE CONTRACTOR SHALL BE RESPONSIBLE FOR MAINTAINING ACCESS TO ALL ADJACENT PROPERTIES. THE CONTRACTOR SHALL BE RESPONSIBLE FOR RESTORING THE SITE TO ORIGINAL OR BETTER CONDITION AFTER COMPLETION OF THE PROJECT.







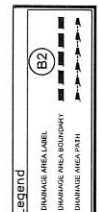
PROPOSED DRAINAGE AREA SUMMARY (SC)

DRAINAGE AREA (SQ FT)	CONCENTRATED FLOW (MGAL)	SCOURED FLOW (MGAL)	TOTAL FLOW (MGAL)	15' SLOPE (MGAL)	CONCENTRATED FLOW (MGAL)	SCOURED FLOW (MGAL)	TOTAL FLOW (MGAL)	15' SLOPE (MGAL)
B1	1.52	1.12	2.64	0.26	1.52	1.12	2.64	0.26
B2	1.52	1.12	2.64	0.26	1.52	1.12	2.64	0.26
B3	1.52	1.12	2.64	0.26	1.52	1.12	2.64	0.26
B4	1.52	1.12	2.64	0.26	1.52	1.12	2.64	0.26
B5	1.52	1.12	2.64	0.26	1.52	1.12	2.64	0.26
B6	1.52	1.12	2.64	0.26	1.52	1.12	2.64	0.26
B7	1.52	1.12	2.64	0.26	1.52	1.12	2.64	0.26
C1	1.52	1.12	2.64	0.26	1.52	1.12	2.64	0.26
C2	1.52	1.12	2.64	0.26	1.52	1.12	2.64	0.26
C3	1.52	1.12	2.64	0.26	1.52	1.12	2.64	0.26
C4	1.52	1.12	2.64	0.26	1.52	1.12	2.64	0.26
C5	1.52	1.12	2.64	0.26	1.52	1.12	2.64	0.26
C6	1.52	1.12	2.64	0.26	1.52	1.12	2.64	0.26
C7	1.52	1.12	2.64	0.26	1.52	1.12	2.64	0.26
D1	1.52	1.12	2.64	0.26	1.52	1.12	2.64	0.26
D2	1.52	1.12	2.64	0.26	1.52	1.12	2.64	0.26
D3	1.52	1.12	2.64	0.26	1.52	1.12	2.64	0.26
D4	1.52	1.12	2.64	0.26	1.52	1.12	2.64	0.26
D5	1.52	1.12	2.64	0.26	1.52	1.12	2.64	0.26
D6	1.52	1.12	2.64	0.26	1.52	1.12	2.64	0.26
D7	1.52	1.12	2.64	0.26	1.52	1.12	2.64	0.26
E1	1.52	1.12	2.64	0.26	1.52	1.12	2.64	0.26
E2	1.52	1.12	2.64	0.26	1.52	1.12	2.64	0.26
E3	1.52	1.12	2.64	0.26	1.52	1.12	2.64	0.26
E4	1.52	1.12	2.64	0.26	1.52	1.12	2.64	0.26
E5	1.52	1.12	2.64	0.26	1.52	1.12	2.64	0.26
E6	1.52	1.12	2.64	0.26	1.52	1.12	2.64	0.26
E7	1.52	1.12	2.64	0.26	1.52	1.12	2.64	0.26
F1	1.52	1.12	2.64	0.26	1.52	1.12	2.64	0.26
F2	1.52	1.12	2.64	0.26	1.52	1.12	2.64	0.26
F3	1.52	1.12	2.64	0.26	1.52	1.12	2.64	0.26
F4	1.52	1.12	2.64	0.26	1.52	1.12	2.64	0.26
F5	1.52	1.12	2.64	0.26	1.52	1.12	2.64	0.26
F6	1.52	1.12	2.64	0.26	1.52	1.12	2.64	0.26
F7	1.52	1.12	2.64	0.26	1.52	1.12	2.64	0.26
GRAND TOTAL	104.16	77.44	181.60	18.16	104.16	77.44	181.60	18.16

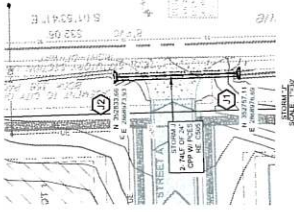
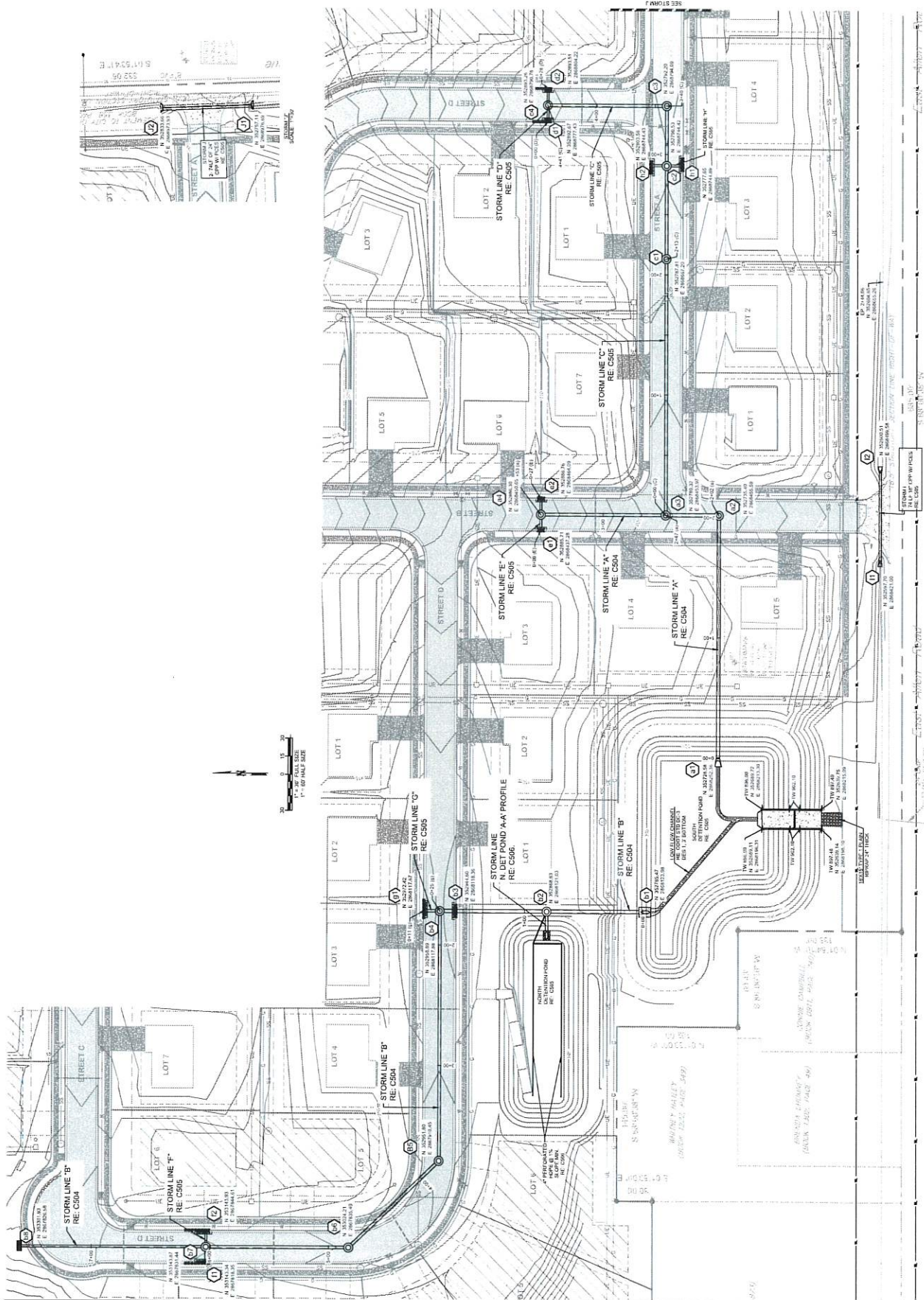
PROPOSED INLET DESIGN TABLE (RATIONAL)

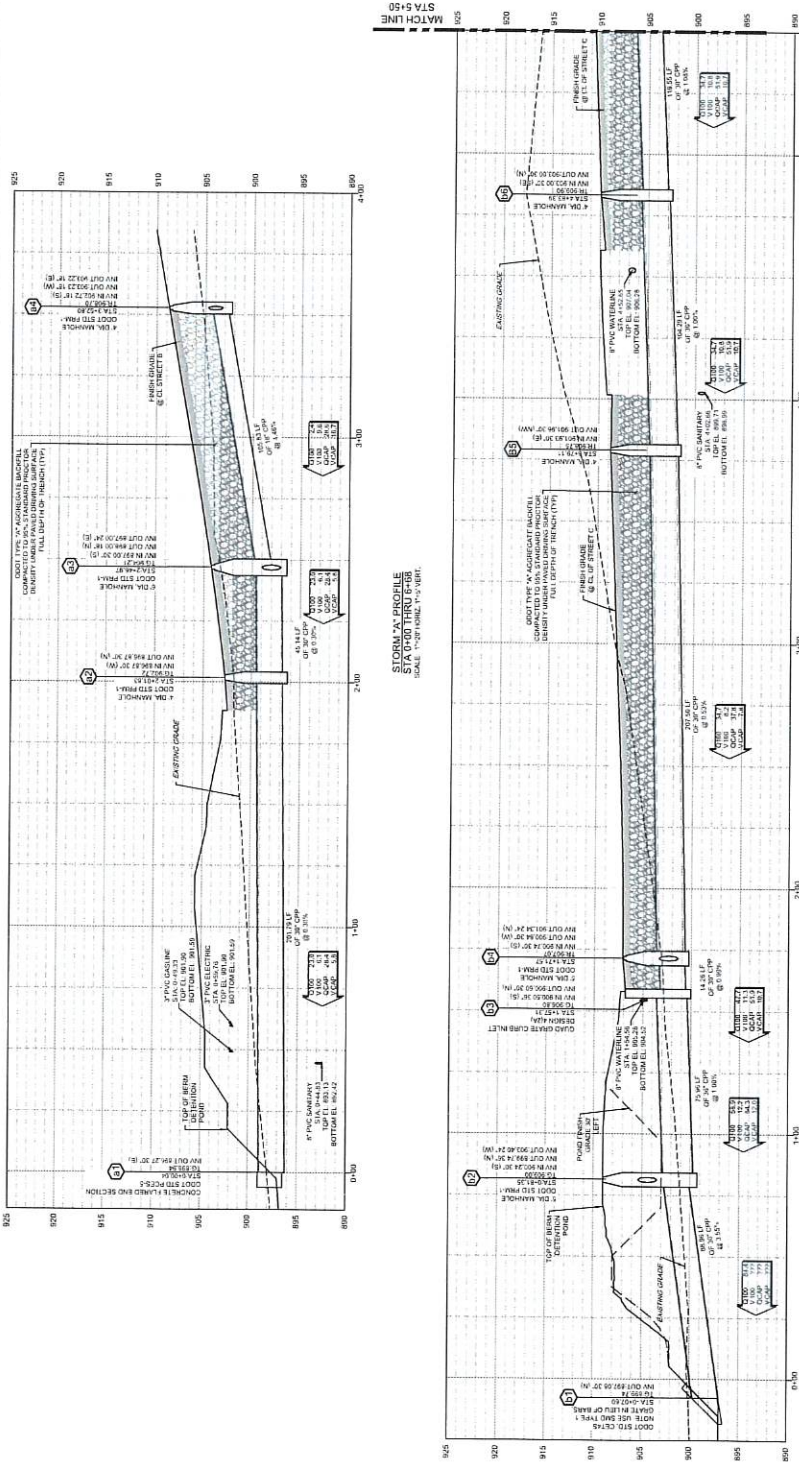
DRAINAGE AREA (SQ FT)	PEAK FLOW (MGAL)	PEAK FLOW (MGAL)	PEAK FLOW (MGAL)	PEAK FLOW (MGAL)	PEAK FLOW (MGAL)	PEAK FLOW (MGAL)	PEAK FLOW (MGAL)	PEAK FLOW (MGAL)	PEAK FLOW (MGAL)	PEAK FLOW (MGAL)
B1	1.52	1.12	2.64	0.26	1.52	1.12	2.64	0.26	1.52	1.12
B2	1.52	1.12	2.64	0.26	1.52	1.12	2.64	0.26	1.52	1.12
B3	1.52	1.12	2.64	0.26	1.52	1.12	2.64	0.26	1.52	1.12
B4	1.52	1.12	2.64	0.26	1.52	1.12	2.64	0.26	1.52	1.12
B5	1.52	1.12	2.64	0.26	1.52	1.12	2.64	0.26	1.52	1.12
B6	1.52	1.12	2.64	0.26	1.52	1.12	2.64	0.26	1.52	1.12
B7	1.52	1.12	2.64	0.26	1.52	1.12	2.64	0.26	1.52	1.12
C1	1.52	1.12	2.64	0.26	1.52	1.12	2.64	0.26	1.52	1.12
C2	1.52	1.12	2.64	0.26	1.52	1.12	2.64	0.26	1.52	1.12
C3	1.52	1.12	2.64	0.26	1.52	1.12	2.64	0.26	1.52	1.12
C4	1.52	1.12	2.64	0.26	1.52	1.12	2.64	0.26	1.52	1.12
C5	1.52	1.12	2.64	0.26	1.52	1.12	2.64	0.26	1.52	1.12
C6	1.52	1.12	2.64	0.26	1.52	1.12	2.64	0.26	1.52	1.12
C7	1.52	1.12	2.64	0.26	1.52	1.12	2.64	0.26	1.52	1.12
D1	1.52	1.12	2.64	0.26	1.52	1.12	2.64	0.26	1.52	1.12
D2	1.52	1.12	2.64	0.26	1.52	1.12	2.64	0.26	1.52	1.12
D3	1.52	1.12	2.64	0.26	1.52	1.12	2.64	0.26	1.52	1.12
D4	1.52	1.12	2.64	0.26	1.52	1.12	2.64	0.26	1.52	1.12
D5	1.52	1.12	2.64	0.26	1.52	1.12	2.64	0.26	1.52	1.12
D6	1.52	1.12	2.64	0.26	1.52	1.12	2.64	0.26	1.52	1.12
D7	1.52	1.12	2.64	0.26	1.52	1.12	2.64	0.26	1.52	1.12
E1	1.52	1.12	2.64	0.26	1.52	1.12	2.64	0.26	1.52	1.12
E2	1.52	1.12	2.64	0.26	1.52	1.12	2.64	0.26	1.52	1.12
E3	1.52	1.12	2.64	0.26	1.52	1.12	2.64	0.26	1.52	1.12
E4	1.52	1.12	2.64	0.26	1.52	1.12	2.64	0.26	1.52	1.12
E5	1.52	1.12	2.64	0.26	1.52	1.12	2.64	0.26	1.52	1.12
E6	1.52	1.12	2.64	0.26	1.52	1.12	2.64	0.26	1.52	1.12
E7	1.52	1.12	2.64	0.26	1.52	1.12	2.64	0.26	1.52	1.12
F1	1.52	1.12	2.64	0.26	1.52	1.12	2.64	0.26	1.52	1.12
F2	1.52	1.12	2.64	0.26	1.52	1.12	2.64	0.26	1.52	1.12
F3	1.52	1.12	2.64	0.26	1.52	1.12	2.64	0.26	1.52	1.12
F4	1.52	1.12	2.64	0.26	1.52	1.12	2.64	0.26	1.52	1.12
F5	1.52	1.12	2.64	0.26	1.52	1.12	2.64	0.26	1.52	1.12
F6	1.52	1.12	2.64	0.26	1.52	1.12	2.64	0.26	1.52	1.12
F7	1.52	1.12	2.64	0.26	1.52	1.12	2.64	0.26	1.52	1.12
GRAND TOTAL	104.16	77.44	181.60	18.16	104.16	77.44	181.60	18.16	104.16	77.44

CAUTION
NOTICE TO CONTRACTOR
THE CONTRACTOR IS SPECIFICALLY CAUTIONED THE LOCATION OF EXISTING UTILITIES SHOWN ON THESE PLANS ARE BASED ON RECORDS OF THE UTILITY LOCATING INFORMATION PROVIDED BY THE UTILITY LOCATING INFORMATION PROVIDER. THE CONTRACTOR SHALL VERIFY THE LOCATION AND DEPTH OF ALL UTILITIES AT ALL LOCATIONS PRIOR TO ANY CONSTRUCTION TO PREVENT DAMAGE TO UTILITIES.

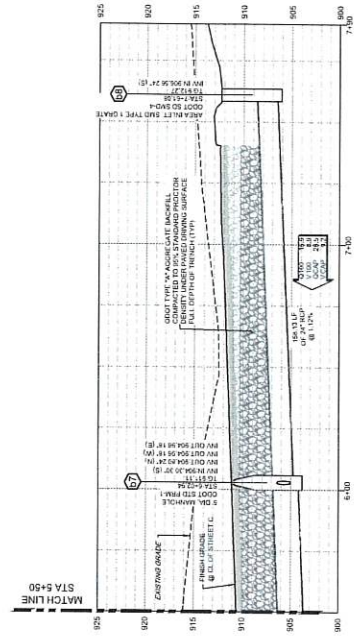


FOR STORM SEWER CALCULATIONS RE C506

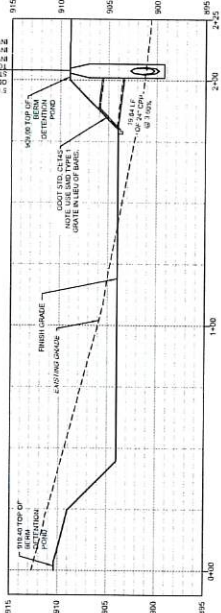




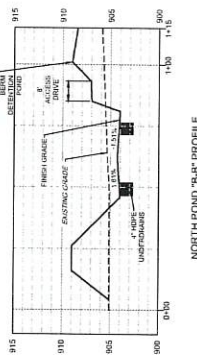
STORM 'A' PROFILE
STA 0+00 THRU 6+00
SCALE: 1" = 20' HORIZ. 1" = 2' VERT.



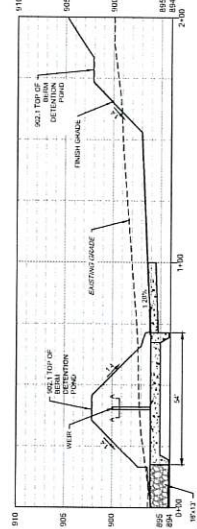
STORM 'B' PROFILE
STA 5+50 THRU 7+00
SCALE: 1" = 20' HORIZ. 1" = 2' VERT.



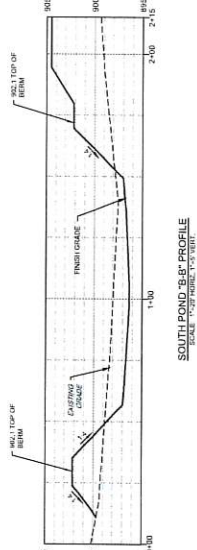
NORTH POND 'A-A' PROFILE
SCALE: 1"=20' HORIZONTAL, 1"=4' VERTICAL



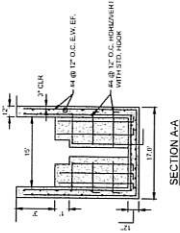
NORTH POND 'B-B' PROFILE
SCALE: 1"=20' HORIZONTAL, 1"=4' VERTICAL



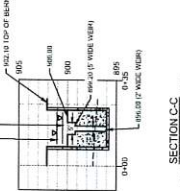
SOUTH POND 'A-A' PROFILE
SCALE: 1"=20' HORIZONTAL, 1"=4' VERTICAL



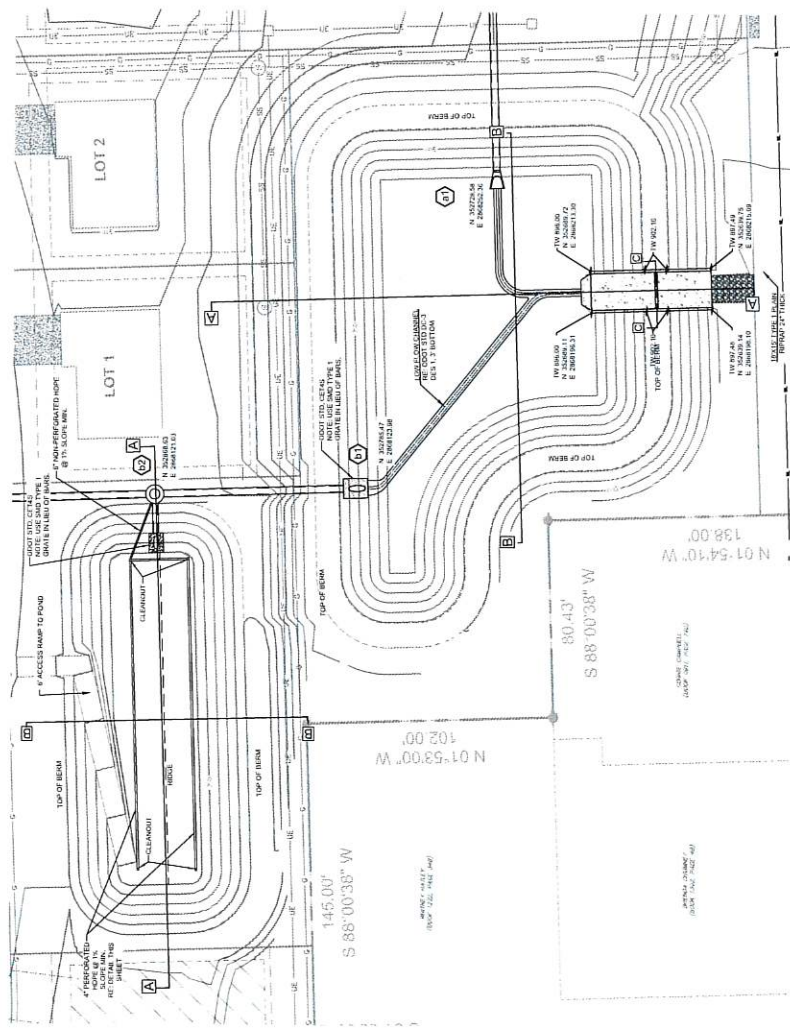
SOUTH POND 'B-B' PROFILE
SCALE: 1"=20' HORIZONTAL, 1"=4' VERTICAL



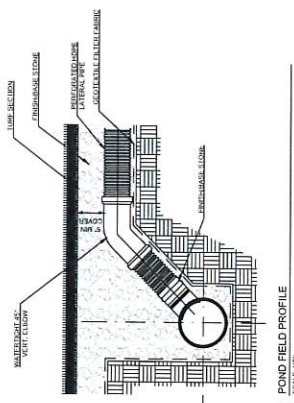
SECTION A-A
SCALE: 1/8"=1'-0"



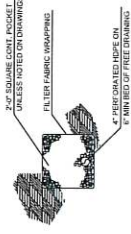
SECTION C-C
SCALE: 1/8"=1'-0"



DETENTION POND PLAN
SCALE: 1"=20'



2 POND FIELD PROFILE
SCALE: 1"=10'



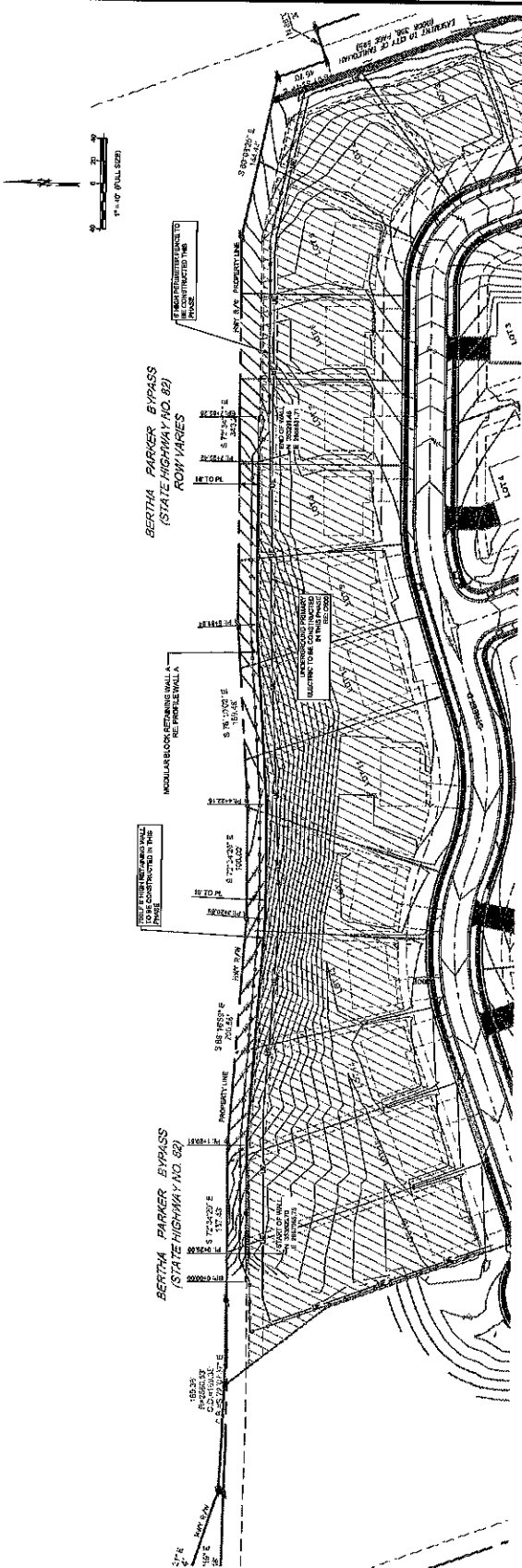
1 PIPE UNDER DRAIN
SCALE: 1/4"=1'-0"

DETENTION POND 1 (EIGHTH) AREA SUMMARY (S&S METHOD)

WATER ELEVATION (FT)	CONTRIBUTING STRUCTURES
908.00	2' wide area @ 500.00
909.00	2' wide area @ 500.00
910.00	2' wide area @ 500.00
911.00	2' wide area @ 500.00
912.00	2' wide area @ 500.00
913.00	2' wide area @ 500.00
914.00	2' wide area @ 500.00
915.00	2' wide area @ 500.00
916.00	2' wide area @ 500.00
917.00	2' wide area @ 500.00
918.00	2' wide area @ 500.00
919.00	2' wide area @ 500.00
920.00	2' wide area @ 500.00
921.00	2' wide area @ 500.00
922.00	2' wide area @ 500.00
923.00	2' wide area @ 500.00
924.00	2' wide area @ 500.00
925.00	2' wide area @ 500.00
926.00	2' wide area @ 500.00
927.00	2' wide area @ 500.00
928.00	2' wide area @ 500.00
929.00	2' wide area @ 500.00
930.00	2' wide area @ 500.00
931.00	2' wide area @ 500.00
932.00	2' wide area @ 500.00
933.00	2' wide area @ 500.00
934.00	2' wide area @ 500.00
935.00	2' wide area @ 500.00
936.00	2' wide area @ 500.00
937.00	2' wide area @ 500.00
938.00	2' wide area @ 500.00
939.00	2' wide area @ 500.00
940.00	2' wide area @ 500.00
941.00	2' wide area @ 500.00
942.00	2' wide area @ 500.00
943.00	2' wide area @ 500.00
944.00	2' wide area @ 500.00
945.00	2' wide area @ 500.00
946.00	2' wide area @ 500.00
947.00	2' wide area @ 500.00
948.00	2' wide area @ 500.00
949.00	2' wide area @ 500.00
950.00	2' wide area @ 500.00
951.00	2' wide area @ 500.00
952.00	2' wide area @ 500.00
953.00	2' wide area @ 500.00
954.00	2' wide area @ 500.00
955.00	2' wide area @ 500.00
956.00	2' wide area @ 500.00
957.00	2' wide area @ 500.00
958.00	2' wide area @ 500.00
959.00	2' wide area @ 500.00
960.00	2' wide area @ 500.00
961.00	2' wide area @ 500.00
962.00	2' wide area @ 500.00
963.00	2' wide area @ 500.00
964.00	2' wide area @ 500.00
965.00	2' wide area @ 500.00
966.00	2' wide area @ 500.00
967.00	2' wide area @ 500.00
968.00	2' wide area @ 500.00
969.00	2' wide area @ 500.00
970.00	2' wide area @ 500.00
971.00	2' wide area @ 500.00
972.00	2' wide area @ 500.00
973.00	2' wide area @ 500.00
974.00	2' wide area @ 500.00
975.00	2' wide area @ 500.00
976.00	2' wide area @ 500.00
977.00	2' wide area @ 500.00
978.00	2' wide area @ 500.00
979.00	2' wide area @ 500.00
980.00	2' wide area @ 500.00
981.00	2' wide area @ 500.00
982.00	2' wide area @ 500.00
983.00	2' wide area @ 500.00
984.00	2' wide area @ 500.00
985.00	2' wide area @ 500.00
986.00	2' wide area @ 500.00
987.00	2' wide area @ 500.00
988.00	2' wide area @ 500.00
989.00	2' wide area @ 500.00
990.00	2' wide area @ 500.00
991.00	2' wide area @ 500.00
992.00	2' wide area @ 500.00
993.00	2' wide area @ 500.00
994.00	2' wide area @ 500.00
995.00	2' wide area @ 500.00
996.00	2' wide area @ 500.00
997.00	2' wide area @ 500.00
998.00	2' wide area @ 500.00
999.00	2' wide area @ 500.00
1000.00	2' wide area @ 500.00

DETENTION POND 2 (NINTH) AREA SUMMARY (S&S METHOD)

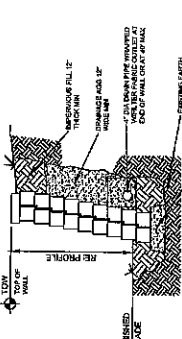
WATER ELEVATION (FT)	CONTRIBUTING STRUCTURES
898.00	2' wide area @ 500.00
899.00	2' wide area @ 500.00
900.00	2' wide area @ 500.00
901.00	2' wide area @ 500.00
902.00	2' wide area @ 500.00
903.00	2' wide area @ 500.00
904.00	2' wide area @ 500.00
905.00	2' wide area @ 500.00
906.00	2' wide area @ 500.00
907.00	2' wide area @ 500.00
908.00	2' wide area @ 500.00
909.00	2' wide area @ 500.00
910.00	2' wide area @ 500.00
911.00	2' wide area @ 500.00
912.00	2' wide area @ 500.00
913.00	2' wide area @ 500.00
914.00	2' wide area @ 500.00
915.00	2' wide area @ 500.00
916.00	2' wide area @ 500.00
917.00	2' wide area @ 500.00
918.00	2' wide area @ 500.00
919.00	2' wide area @ 500.00
920.00	2' wide area @ 500.00
921.00	2' wide area @ 500.00
922.00	2' wide area @ 500.00
923.00	2' wide area @ 500.00
924.00	2' wide area @ 500.00
925.00	2' wide area @ 500.00
926.00	2' wide area @ 500.00
927.00	2' wide area @ 500.00
928.00	2' wide area @ 500.00
929.00	2' wide area @ 500.00
930.00	2' wide area @ 500.00
931.00	2' wide area @ 500.00
932.00	2' wide area @ 500.00
933.00	2' wide area @ 500.00
934.00	2' wide area @ 500.00
935.00	2' wide area @ 500.00
936.00	2' wide area @ 500.00
937.00	2' wide area @ 500.00
938.00	2' wide area @ 500.00
939.00	2' wide area @ 500.00
940.00	2' wide area @ 500.00
941.00	2' wide area @ 500.00
942.00	2' wide area @ 500.00
943.00	2' wide area @ 500.00
944.00	2' wide area @ 500.00
945.00	2' wide area @ 500.00
946.00	2' wide area @ 500.00
947.00	2' wide area @ 500.00
948.00	2' wide area @ 500.00
949.00	2' wide area @ 500.00
950.00	2' wide area @ 500.00
951.00	2' wide area @ 500.00
952.00	2' wide area @ 500.00
953.00	2' wide area @ 500.00
954.00	2' wide area @ 500.00
955.00	2' wide area @ 500.00
956.00	2' wide area @ 500.00
957.00	2' wide area @ 500.00
958.00	2' wide area @ 500.00
959.00	2' wide area @ 500.00
960.00	2' wide area @ 500.00
961.00	2' wide area @ 500.00
962.00	2' wide area @ 500.00
963.00	2' wide area @ 500.00
964.00	2' wide area @ 500.00
965.00	2' wide area @ 500.00
966.00	2' wide area @ 500.00
967.00	2' wide area @ 500.00
968.00	2' wide area @ 500.00
969.00	2' wide area @ 500.00
970.00	2' wide area @ 500.00
971.00	2' wide area @ 500.00
972.00	2' wide area @ 500.00
973.00	2' wide area @ 500.00
974.00	2' wide area @ 500.00
975.00	2' wide area @ 500.00
976.00	2' wide area @ 500.00
977.00	2' wide area @ 500.00
978.00	2' wide area @ 500.00
979.00	2' wide area @ 500.00
980.00	2' wide area @ 500.00
981.00	2' wide area @ 500.00
982.00	2' wide area @ 500.00
983.00	2' wide area @ 500.00
984.00	2' wide area @ 500.00
985.00	2' wide area @ 500.00
986.00	2' wide area @ 500.00
987.00	2' wide area @ 500.00
988.00	2' wide area @ 500.00
989.00	2' wide area @ 500.00
990.00	2' wide area @ 500.00
991.00	2' wide area @ 500.00
992.00	2' wide area @ 500.00
993.00	2' wide area @ 500.00
994.00	2' wide area @ 500.00
995.00	2' wide area @ 500.00
996.00	2' wide area @ 500.00
997.00	2' wide area @ 500.00
998.00	2' wide area @ 500.00
999.00	2' wide area @ 500.00
1000.00	2' wide area @ 500.00



NOTE: MODULAR BLOCK RETAINING WALL SHALL BE DESIGNED BY MANUFACTURER VERSUS OK APPROVED EQUAL. (DETAIL SHOWN FOR INFORMATION ONLY.) REGISTERED PROFESSIONAL ENGINEER IN THE STATE OF OKLAHOMA.

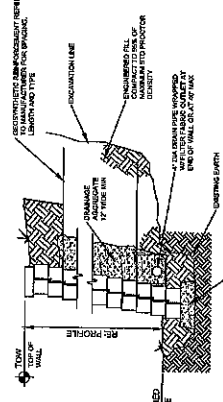
REQUIRED FINISH DEVELOPMENT
CONCRETEWORK
REINFORCING
CONCRETEWORK

FINISH
GRAVEL
CONCRETE
ASPHALT
PAVEMENT

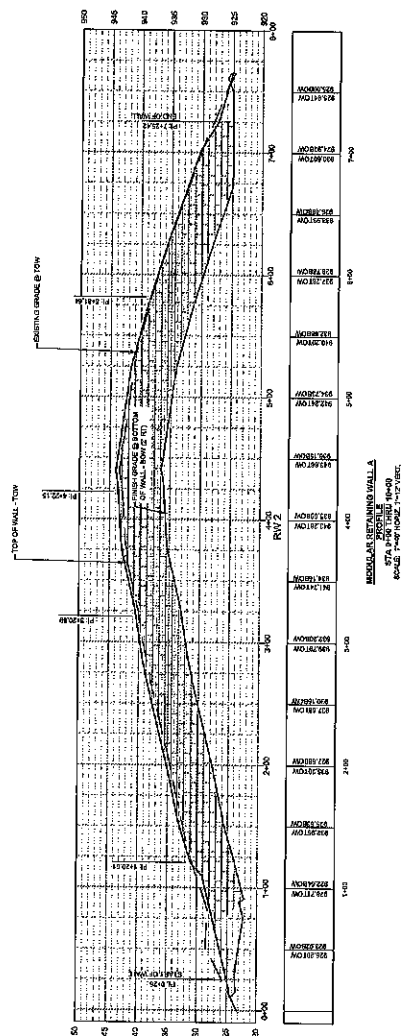


2 NON-REINFORCED MODULAR BLOCK RETAINING WALL (WALL B)
SCALE: NTS

NOTE: MODULAR BLOCK RETAINING WALL SHALL BE DESIGNED BY MANUFACTURER VERSUS OK APPROVED EQUAL. (DETAIL SHOWN FOR INFORMATION ONLY.) REGISTERED PROFESSIONAL ENGINEER IN THE STATE OF OKLAHOMA.

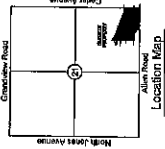


1 REINFORCED MODULAR BLOCK RETAINING WALL (WALL C)
SCALE: NTS



CAUTION: THESE PROFILES ARE SPECIFICALLY FOR THE PROJECT AND ARE NOT TO BE USED FOR ANY OTHER PROJECTS. COMPASS AND SEPARATE TOOLS IN THE FIELD. THIS CONTRACTOR SHALL BE RESPONSIBLE FOR VERIFYING THE ELEVATION DATA AND TO PROVIDE AT LEAST TWO CHECKS OF THE UTILITIES.

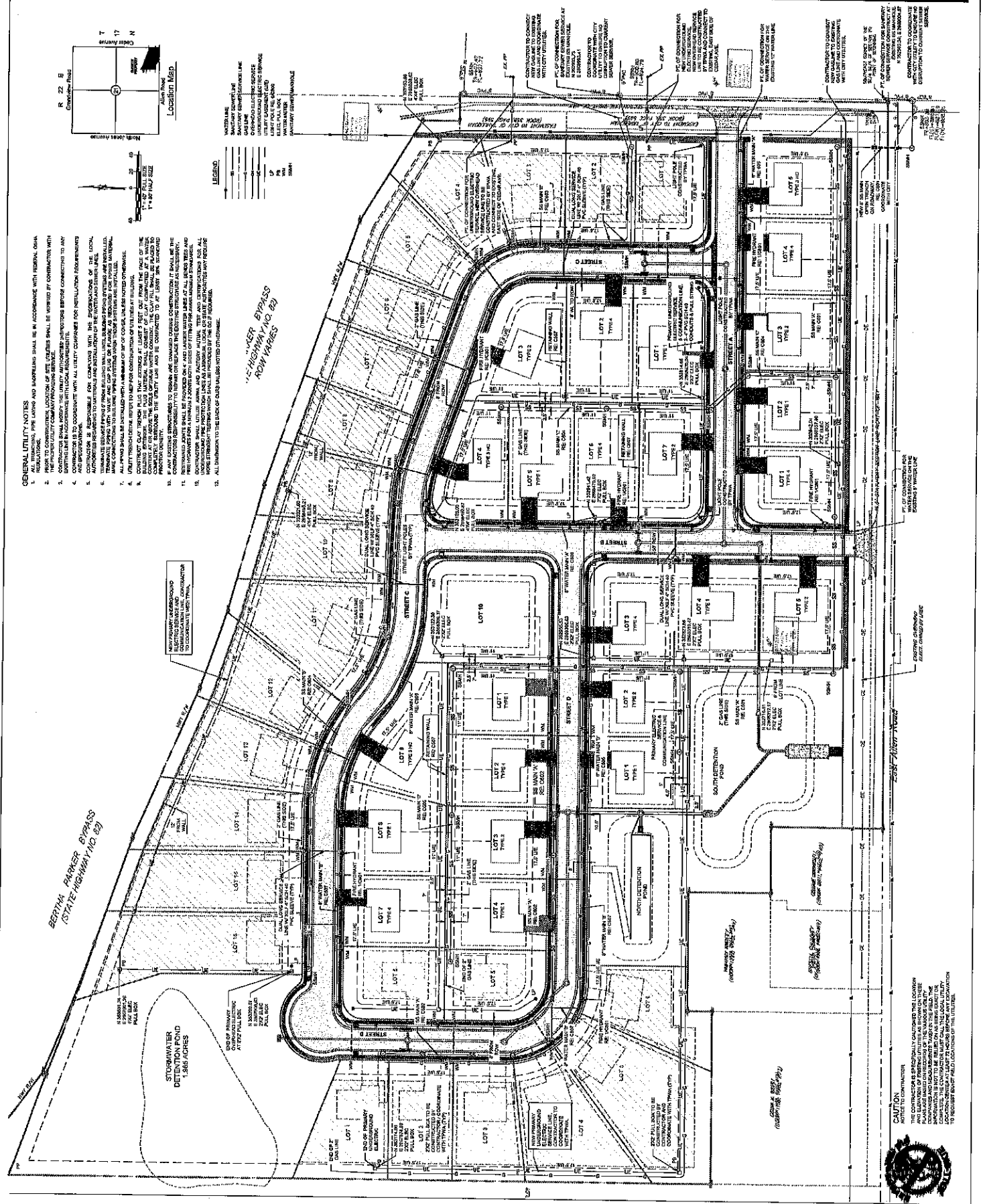




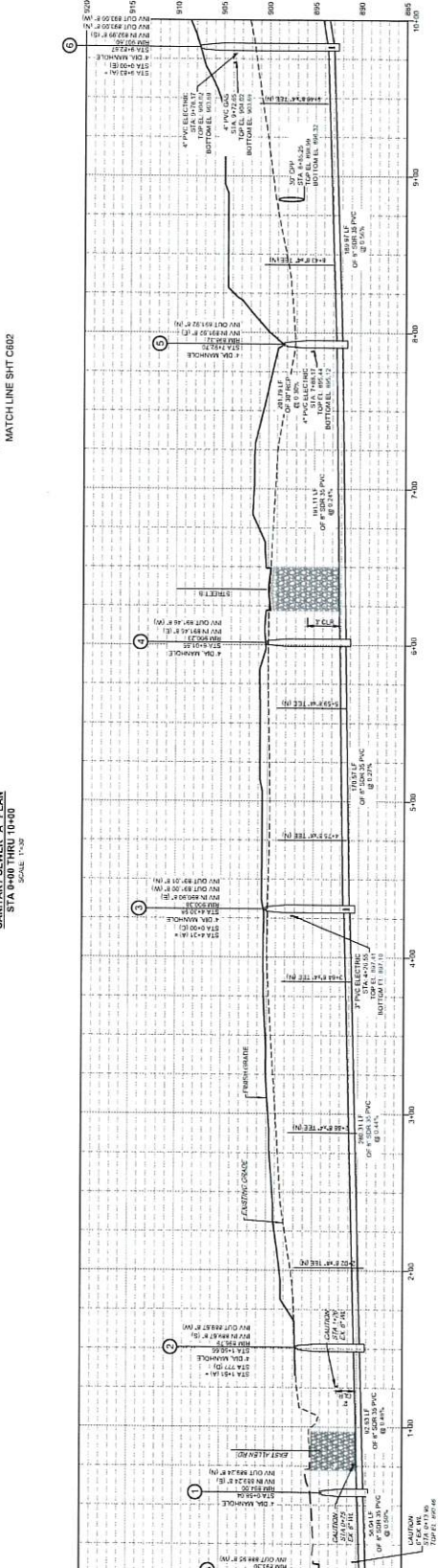
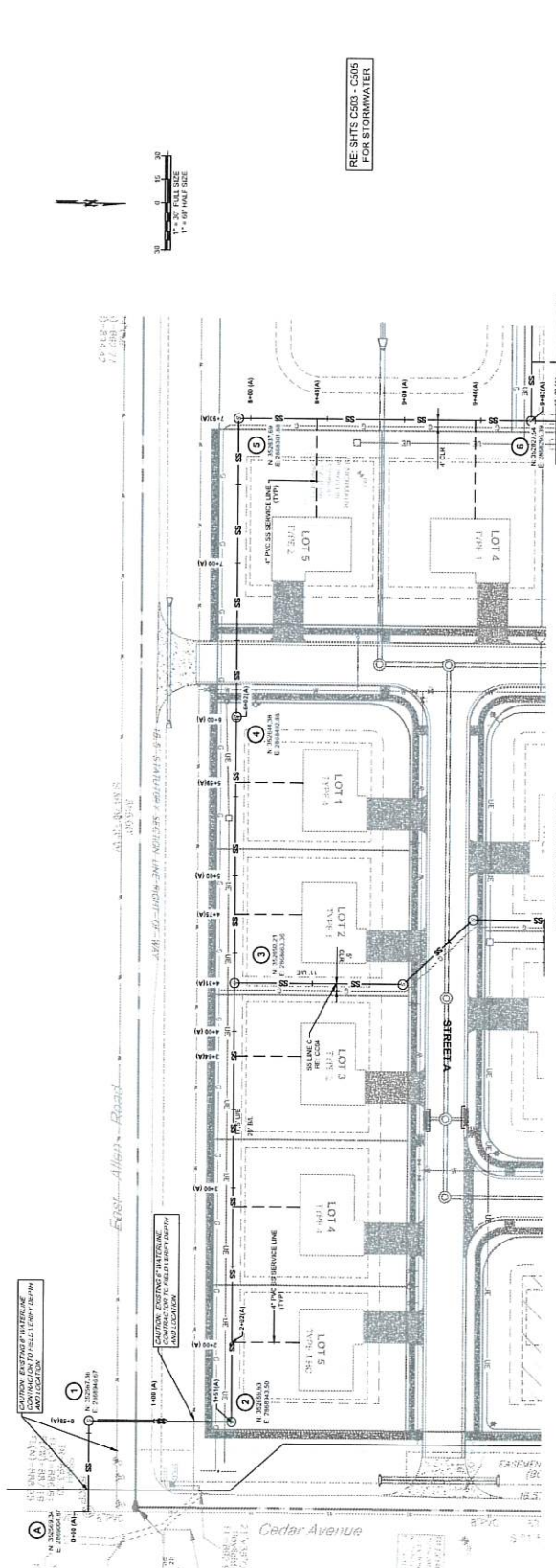
LEGEND

[Symbol]	WATER LINE
[Symbol]	SEWER LINE
[Symbol]	STORMWATER LINE
[Symbol]	ELECTRIC SERVICE LINE
[Symbol]	UTILITY (UNIDENTIFIED)
[Symbol]	1" OF FULL SIZE
[Symbol]	1" OF FULL SIZE
[Symbol]	1" OF FULL SIZE
[Symbol]	1" OF FULL SIZE
[Symbol]	1" OF FULL SIZE

- GENERAL UTILITY NOTES**
1. ALL UTILITIES SHALL BE IN ACCORDANCE WITH FEDERAL, STATE AND LOCAL REGULATIONS.
 2. PRIOR TO COMMENCING WORK, THE LOCATION OF ALL UTILITIES SHALL BE DETERMINED BY CONTRACTOR WITH THE ASSISTANCE OF THE LOCAL UTILITY COMPANIES.
 3. CONTRACTOR SHALL VERIFY THE EXISTING UTILITIES BEFORE COMMENCING ANY WORK TO AVOID DAMAGE TO EXISTING UTILITIES.
 4. ALL UTILITIES SHALL BE INSTALLED IN ACCORDANCE WITH ALL CITY ORDINANCES FOR INSTALLATION REQUIREMENTS.
 5. ALL UTILITIES SHALL BE INSTALLED IN ACCORDANCE WITH THE SPECIFICATIONS OF THE LOCAL UTILITY COMPANIES.
 6. CONTRACTOR SHALL VERIFY THE LOCATION OF ALL UTILITIES BEFORE COMMENCING ANY WORK TO AVOID DAMAGE TO EXISTING UTILITIES.
 7. ALL UTILITIES SHALL BE INSTALLED WITH A MINIMUM OF 36" OF COVER UNLESS NOTED OTHERWISE.
 8. CONTRACTOR SHALL VERIFY THE LOCATION OF ALL UTILITIES BEFORE COMMENCING ANY WORK TO AVOID DAMAGE TO EXISTING UTILITIES.
 9. CONTRACTOR SHALL VERIFY THE LOCATION OF ALL UTILITIES BEFORE COMMENCING ANY WORK TO AVOID DAMAGE TO EXISTING UTILITIES.
 10. IF ANY EXISTING UTILITIES ARE DAMAGED OR DISRUPTED DURING THE CONSTRUCTION OF THIS PROJECT, THE CONTRACTOR SHALL BE RESPONSIBLE FOR REPAIRING OR REPLACING THE SAME AT HIS OWN EXPENSE.
 11. CONTRACTOR SHALL VERIFY THE LOCATION OF ALL UTILITIES BEFORE COMMENCING ANY WORK TO AVOID DAMAGE TO EXISTING UTILITIES.
 12. CONTRACTOR SHALL VERIFY THE LOCATION OF ALL UTILITIES BEFORE COMMENCING ANY WORK TO AVOID DAMAGE TO EXISTING UTILITIES.
 13. CONTRACTOR SHALL VERIFY THE LOCATION OF ALL UTILITIES BEFORE COMMENCING ANY WORK TO AVOID DAMAGE TO EXISTING UTILITIES.
 14. CONTRACTOR SHALL VERIFY THE LOCATION OF ALL UTILITIES BEFORE COMMENCING ANY WORK TO AVOID DAMAGE TO EXISTING UTILITIES.
 15. CONTRACTOR SHALL VERIFY THE LOCATION OF ALL UTILITIES BEFORE COMMENCING ANY WORK TO AVOID DAMAGE TO EXISTING UTILITIES.
 16. CONTRACTOR SHALL VERIFY THE LOCATION OF ALL UTILITIES BEFORE COMMENCING ANY WORK TO AVOID DAMAGE TO EXISTING UTILITIES.



CAUTION:
ALL UTILITIES SHALL BE INSTALLED IN ACCORDANCE WITH ALL CITY ORDINANCES FOR INSTALLATION REQUIREMENTS. CONTRACTOR SHALL VERIFY THE LOCATION OF ALL UTILITIES BEFORE COMMENCING ANY WORK TO AVOID DAMAGE TO EXISTING UTILITIES.



SANITARY SEWER "A" PROFILE
SCALE: 1/4"=1'-0"



329 1/2" 12-8"

15' 0" 12-0"

20' 0" 16-0"

25' 0" 20-0"

30' 0" 24-0"

35' 0" 28-0"

40' 0" 32-0"

45' 0" 36-0"

50' 0" 40-0"

55' 0" 44-0"

60' 0" 48-0"

65' 0" 52-0"

70' 0" 56-0"

75' 0" 60-0"

80' 0" 64-0"

85' 0" 68-0"

90' 0" 72-0"

95' 0" 76-0"

100' 0" 80-0"

105' 0" 84-0"

110' 0" 88-0"

115' 0" 92-0"

120' 0" 96-0"

125' 0" 100-0"

130' 0" 104-0"

135' 0" 108-0"

140' 0" 112-0"

145' 0" 116-0"

150' 0" 120-0"

155' 0" 124-0"

160' 0" 128-0"

165' 0" 132-0"

170' 0" 136-0"

175' 0" 140-0"

180' 0" 144-0"

185' 0" 148-0"

190' 0" 152-0"

195' 0" 156-0"

200' 0" 160-0"

205' 0" 164-0"

210' 0" 168-0"

215' 0" 172-0"

220' 0" 176-0"

225' 0" 180-0"

230' 0" 184-0"

235' 0" 188-0"

240' 0" 192-0"

245' 0" 196-0"

250' 0" 200-0"

255' 0" 204-0"

260' 0" 208-0"

265' 0" 212-0"

270' 0" 216-0"

275' 0" 220-0"

280' 0" 224-0"

285' 0" 228-0"

290' 0" 232-0"

295' 0" 236-0"

300' 0" 240-0"

305' 0" 244-0"

310' 0" 248-0"

315' 0" 252-0"

320' 0" 256-0"

325' 0" 260-0"

330' 0" 264-0"

335' 0" 268-0"

340' 0" 272-0"

345' 0" 276-0"

350' 0" 280-0"

355' 0" 284-0"

360' 0" 288-0"

365' 0" 292-0"

370' 0" 296-0"

375' 0" 300-0"

380' 0" 304-0"

385' 0" 308-0"

390' 0" 312-0"

395' 0" 316-0"

400' 0" 320-0"

405' 0" 324-0"

410' 0" 328-0"

415' 0" 332-0"

420' 0" 336-0"

425' 0" 340-0"

430' 0" 344-0"

435' 0" 348-0"

440' 0" 352-0"

445' 0" 356-0"

450' 0" 360-0"

455' 0" 364-0"

460' 0" 368-0"

465' 0" 372-0"

470' 0" 376-0"

475' 0" 380-0"

480' 0" 384-0"

485' 0" 388-0"

490' 0" 392-0"

495' 0" 396-0"

500' 0" 400-0"

505' 0" 404-0"

510' 0" 408-0"

515' 0" 412-0"

520' 0" 416-0"

525' 0" 420-0"

530' 0" 424-0"

535' 0" 428-0"

540' 0" 432-0"

545' 0" 436-0"

550' 0" 440-0"

555' 0" 444-0"

560' 0" 448-0"

565' 0" 452-0"

570' 0" 456-0"

575' 0" 460-0"

580' 0" 464-0"

585' 0" 468-0"

590' 0" 472-0"

595' 0" 476-0"

600' 0" 480-0"

605' 0" 484-0"

610' 0" 488-0"

615' 0" 492-0"

620' 0" 496-0"

625' 0" 500-0"

630' 0" 504-0"

635' 0" 508-0"

640' 0" 512-0"

645' 0" 516-0"

650' 0" 520-0"

655' 0" 524-0"

660' 0" 528-0"

665' 0" 532-0"

670' 0" 536-0"

675' 0" 540-0"

680' 0" 544-0"

685' 0" 548-0"

690' 0" 552-0"

695' 0" 556-0"

700' 0" 560-0"

705' 0" 564-0"

710' 0" 568-0"

715' 0" 572-0"

720' 0" 576-0"

725' 0" 580-0"

730' 0" 584-0"

735' 0" 588-0"

740' 0" 592-0"

745' 0" 596-0"

750' 0" 600-0"

755' 0" 604-0"

760' 0" 608-0"

765' 0" 612-0"

770' 0" 616-0"

775' 0" 620-0"

780' 0" 624-0"

785' 0" 628-0"

790' 0" 632-0"

795' 0" 636-0"

800' 0" 640-0"

805' 0" 644-0"

810' 0" 648-0"

815' 0" 652-0"

820' 0" 656-0"

825' 0" 660-0"

830' 0" 664-0"

835' 0" 668-0"

840' 0" 672-0"

845' 0" 676-0"

850' 0" 680-0"

855' 0" 684-0"

860' 0" 688-0"

865' 0" 692-0"

870' 0" 696-0"

875' 0" 700-0"

880' 0" 704-0"

885' 0" 708-0"

890' 0" 712-0"

895' 0" 716-0"

900' 0" 720-0"

905' 0" 724-0"

910' 0" 728-0"

915' 0" 732-0"

920' 0" 736-0"

925' 0" 740-0"

930' 0" 744-0"

935' 0" 748-0"

940' 0" 752-0"

945' 0" 756-0"

950' 0" 760-0"

955' 0" 764-0"

960' 0" 768-0"

965' 0" 772-0"

970' 0" 776-0"

975' 0" 780-0"

980' 0" 784-0"

985' 0" 788-0"

990' 0" 792-0"

995' 0" 796-0"

1000' 0" 800-0"

1005' 0" 804-0"

1010' 0" 808-0"

1015' 0" 812-0"

1020' 0" 816-0"

1025' 0" 820-0"

1030' 0" 824-0"

1035' 0" 828-0"

1040' 0" 832-0"

1045' 0" 836-0"

1050' 0" 840-0"

1055' 0" 844-0"

1060' 0" 848-0"

1065' 0" 852-0"

1070' 0" 856-0"

1075' 0" 860-0"

1080' 0" 864-0"

1085' 0" 868-0"

1090' 0" 872-0"

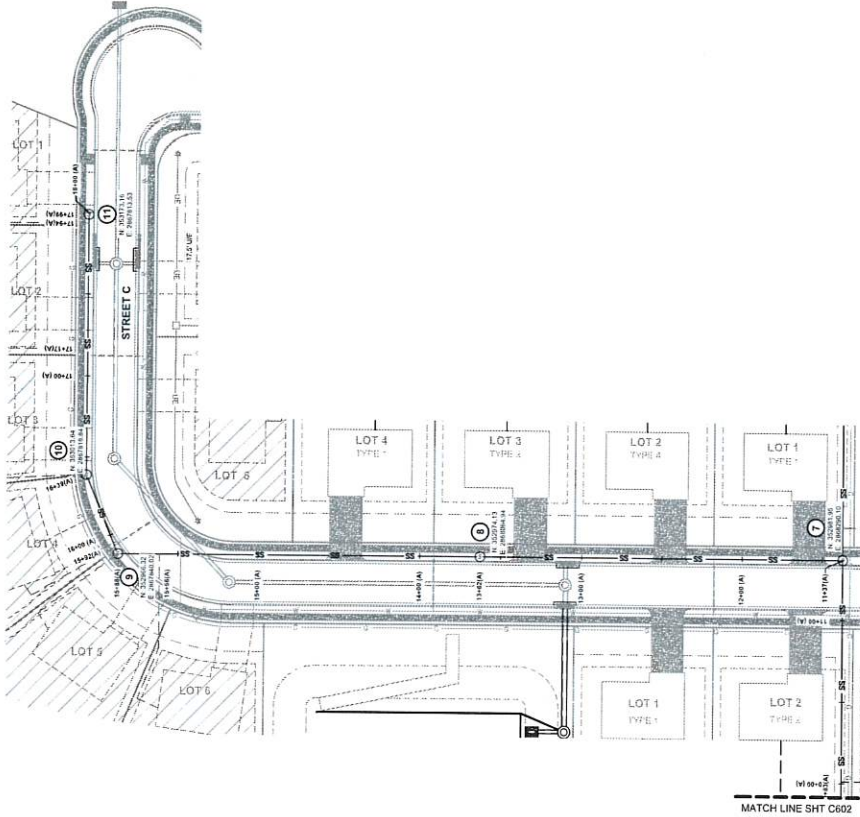
1095' 0" 876-0"

1100' 0" 880-0"

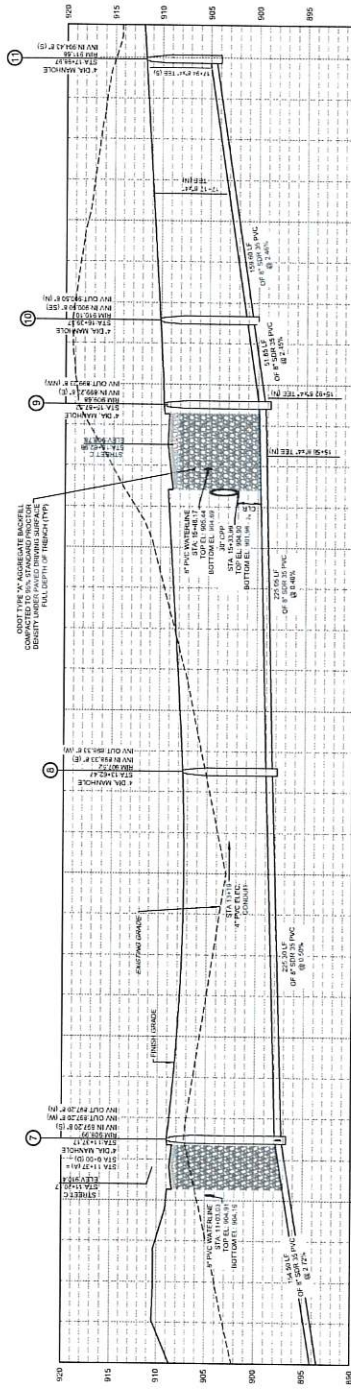


- RESURFACED PAVED (REINFORCEMENT)
- CONCRETE SIDEWALK
- ASPHALT PAVING
- CONCRETE PAVING

- SANITARY SEWER
- MANHOLE RE. COVER
- STORM MANHOLE RE. COVER
- FRONT YARD RE. FLOOR
- RECREATIONAL PALLIUM
- OR COVER

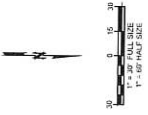


MATCH LINE SHT C602



VERTICAL CURVE DATA

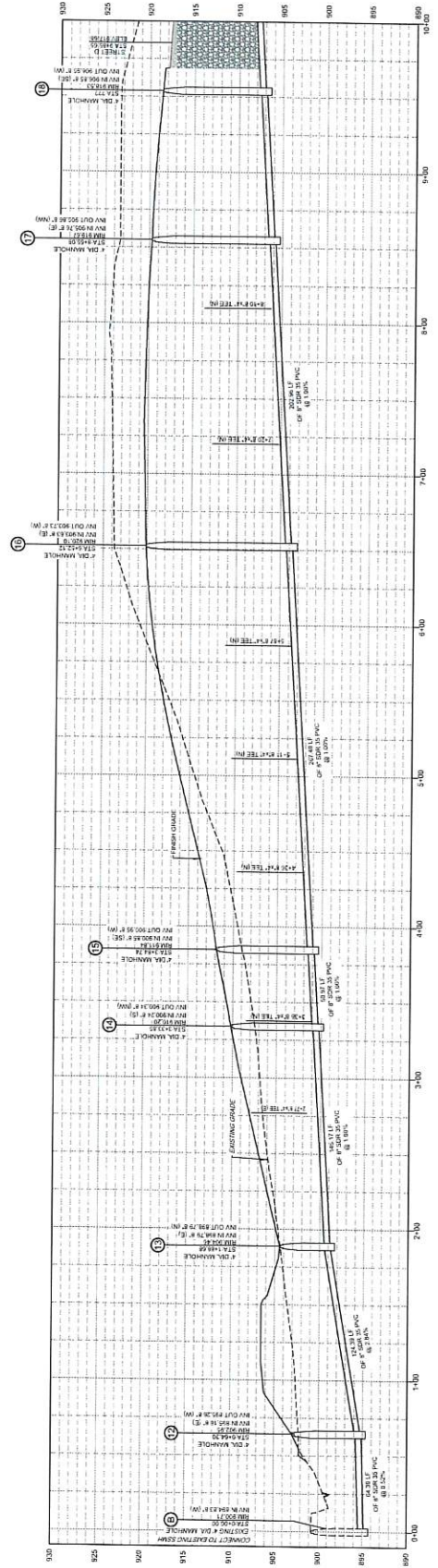
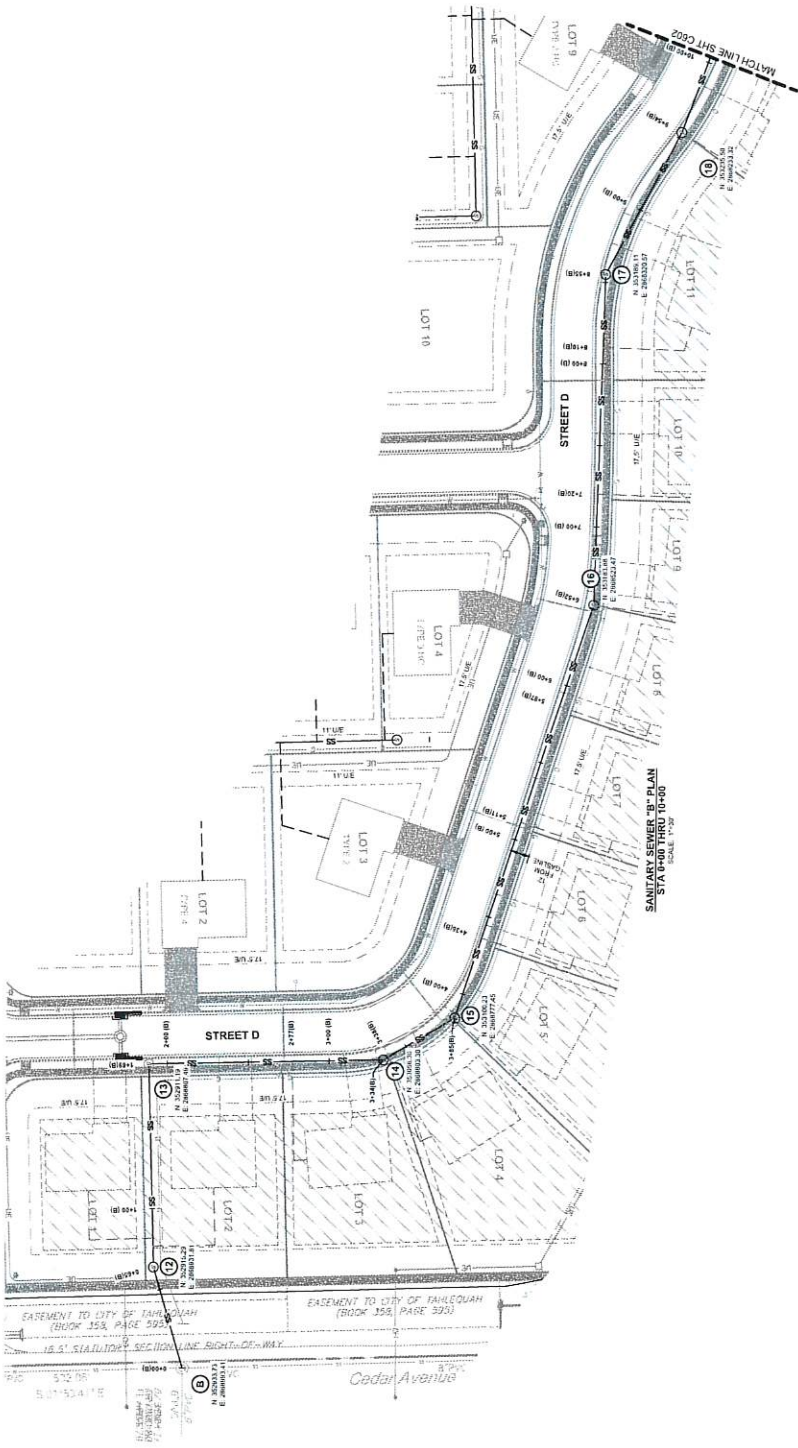
MATCH LINE SHT C601

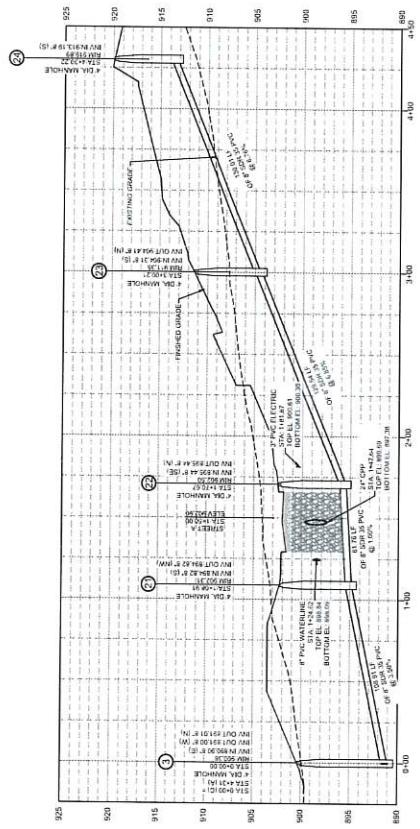
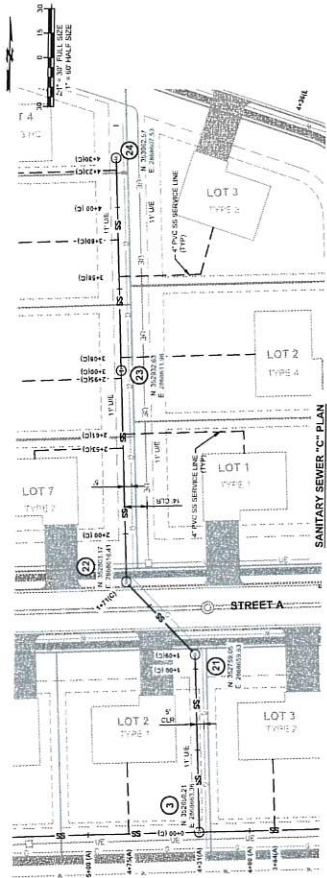


LEGEND

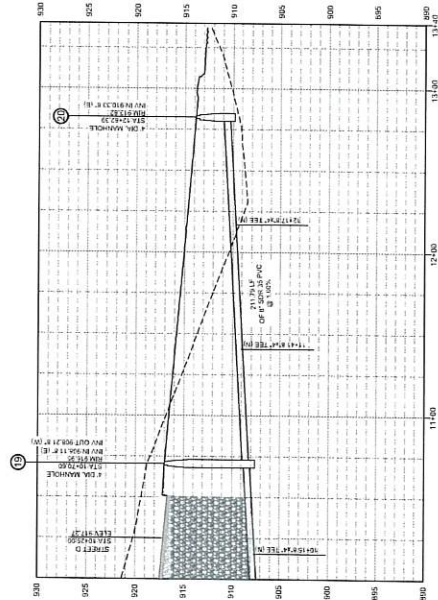
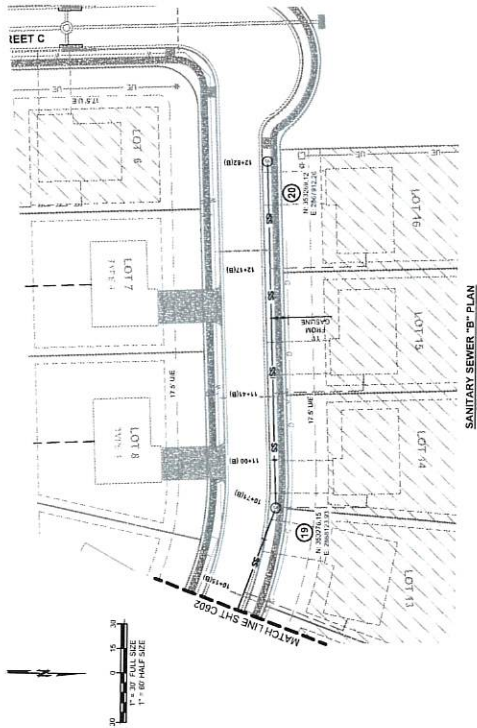
(Symbol)	EXISTING FUTURE DEVELOPMENT
(Symbol)	CONCRETE SEWER
(Symbol)	CONCRETE MANHOLE
(Symbol)	CONCRETE INVERT

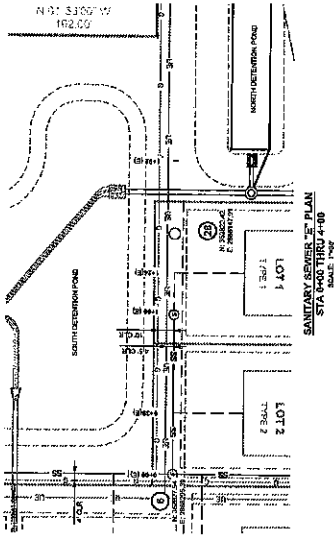
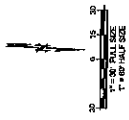
CONCRETE SEWER
CONCRETE MANHOLE
CONCRETE INVERT
NEW POWER POLE, RE. CURB
NEW POWER POLE, RE. CURB
UTILITY EASEMENT, ACROSS
ELECTRICAL PULL BOX
RE. CURB



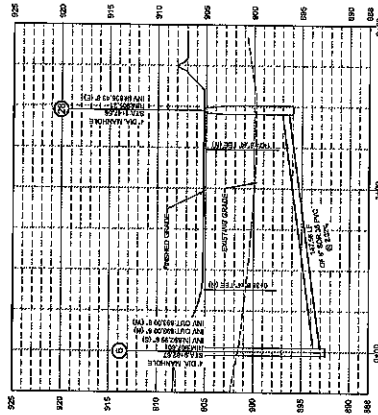


- RESERVED/FUTURE DEVELOPMENT
 - CONCRETE MANHOLE
 - ASPHALT PAVING
 - CONCRETE PAVEMENT
- SBM1 SANITARY SEWER
 MH MANHOLE (SEE COORD.)
 SDMH STORM MANHOLE (SEE COORD.)
 PFC FUTURE PAVEMENT
 PFC FUTURE PAVEMENT
 PFC FUTURE PAVEMENT
 PFC FUTURE PAVEMENT
 PFC FUTURE PAVEMENT
 PFC FUTURE PAVEMENT





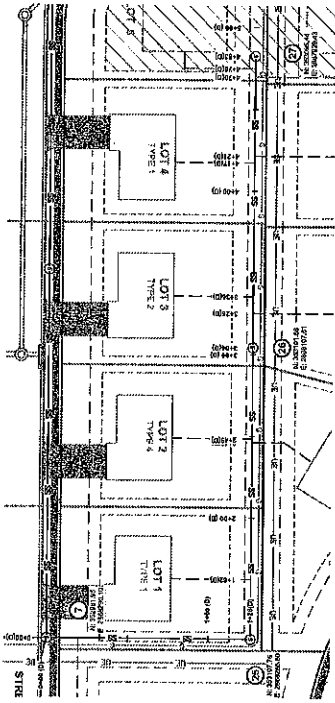
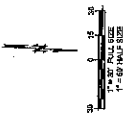
SANITARY SEWER 'E' PLAN
STA 6+00 THRU 4+00
SCALE: 1\"/>



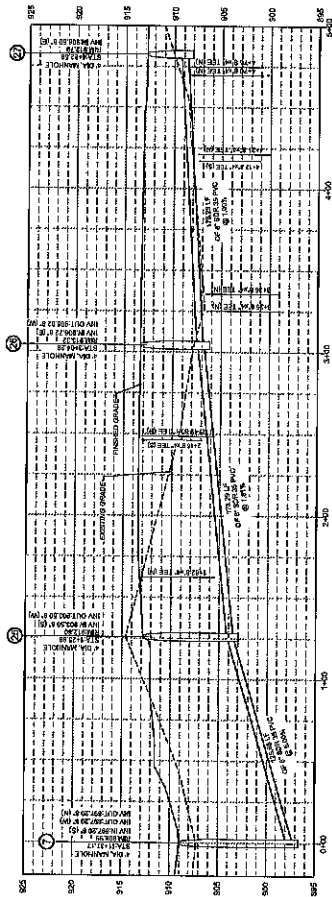
SANITARY SEWER 'E' PROFILE
STA 6+00 THRU 4+00
SCALE: 1\"/>



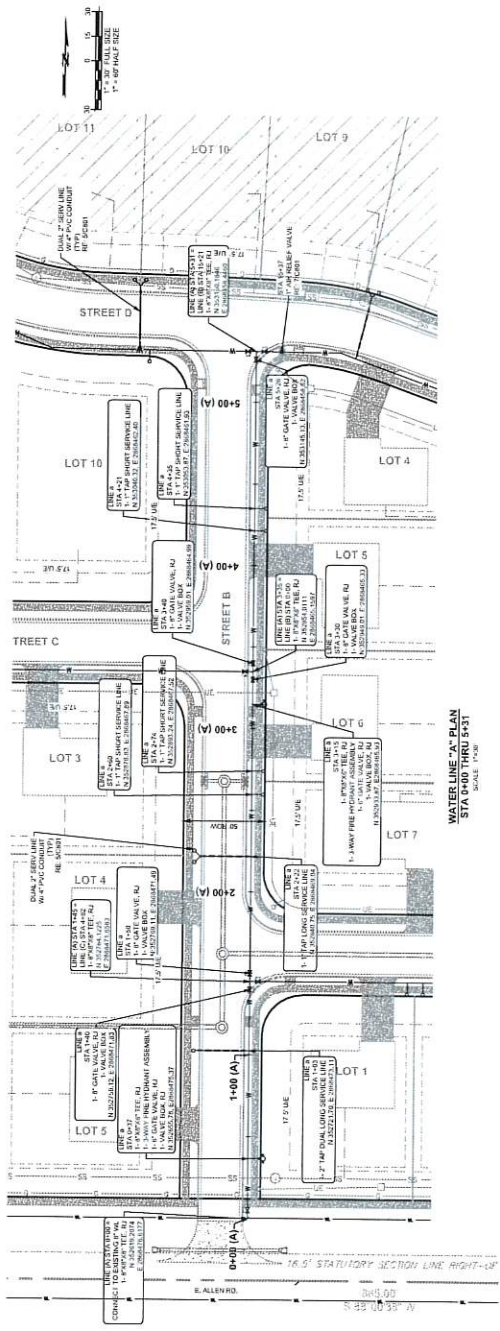
REBAR (OUTSIDE DEVELOPMENT)
CONCRETE (CONCRETE)
ASPHALT PAVING
CONCRETE PAVING
SANITARY SEWER
SEWER MANHOLE
SEWER CATCH BASIN
SEWER INVERT
SEWER PIPE
SEWER FITTING
SEWER VALVE
SEWER CLEANOUT
SEWER CLEANOUT COVER
SEWER CLEANOUT FRAME
SEWER CLEANOUT FRAME COVER
SEWER CLEANOUT FRAME COVER FRAME



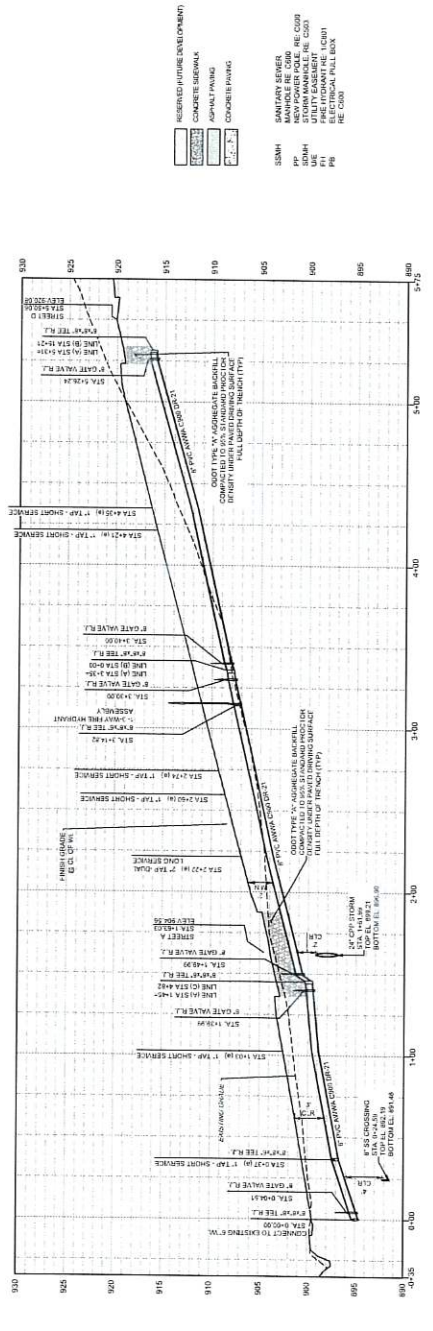
SANITARY SEWER 'D' PLAN
STA 6+00 THRU 4+00
SCALE: 1\"/>



SANITARY SEWER 'D' PROFILE
STA 6+00 THRU 4+00
SCALE: 1\"/>



WATERLINE 'A' PLAN
STA 0+00 THRU 5+31.75



WATERLINE 'A' PROFILE
STA 0+00 THRU 5+31.75

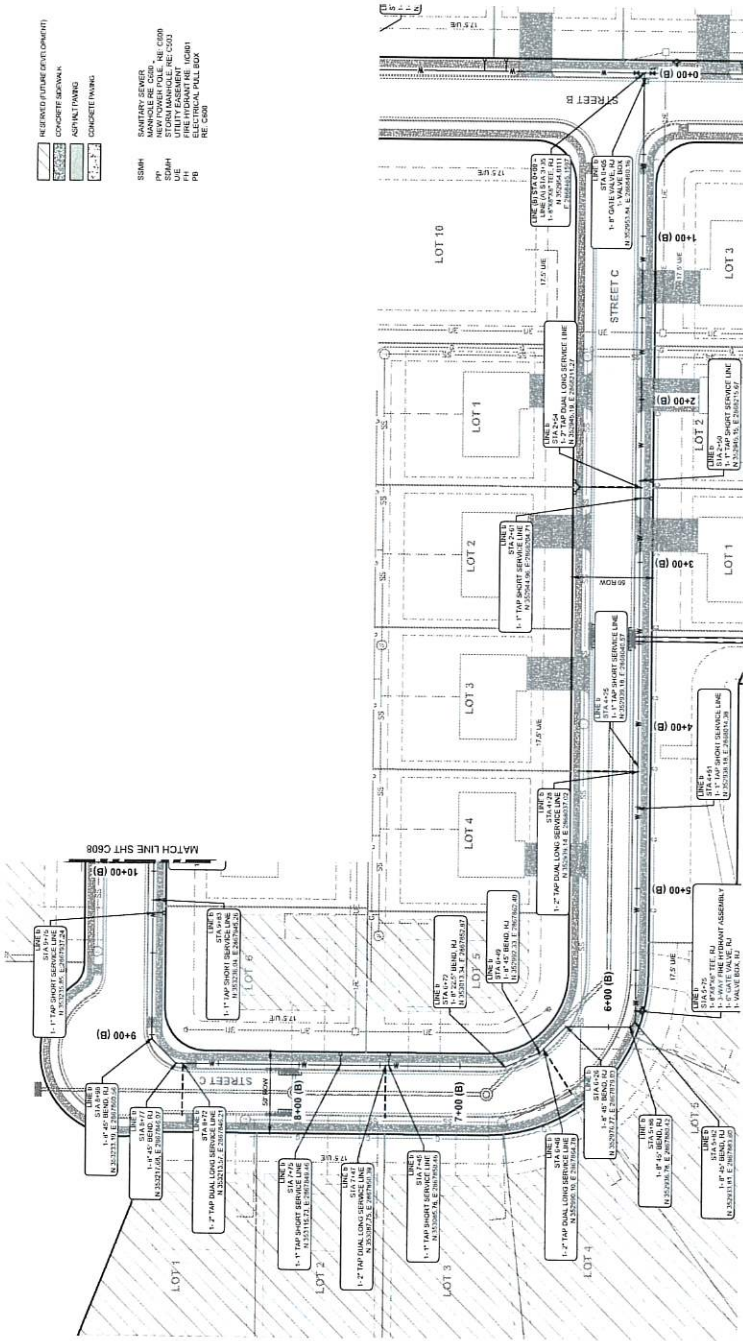
- LEGEND
- INSERED FUTURE DEVELOPMENT
 - CONCRETE SIDEWALK
 - ASPHALT PAVING
 - CONCRETE PAVING
 - SEWER
 - PP
 - UP
 - PI
 - PI
- CONSTRUCTION DOCUMENTS
- NEW POWER POLE REC CO29
 - NEW POWER POLE REC CO29
 - UTILITY EXISTENT REC CO29
 - UTILITY EXISTENT REC CO29
 - UTILITY EXISTENT REC CO29
 - UTILITY EXISTENT REC CO29
 - UTILITY EXISTENT REC CO29
 - UTILITY EXISTENT REC CO29
 - UTILITY EXISTENT REC CO29

RESUME ALL JOINTS
EVERY FEET AND VALVE

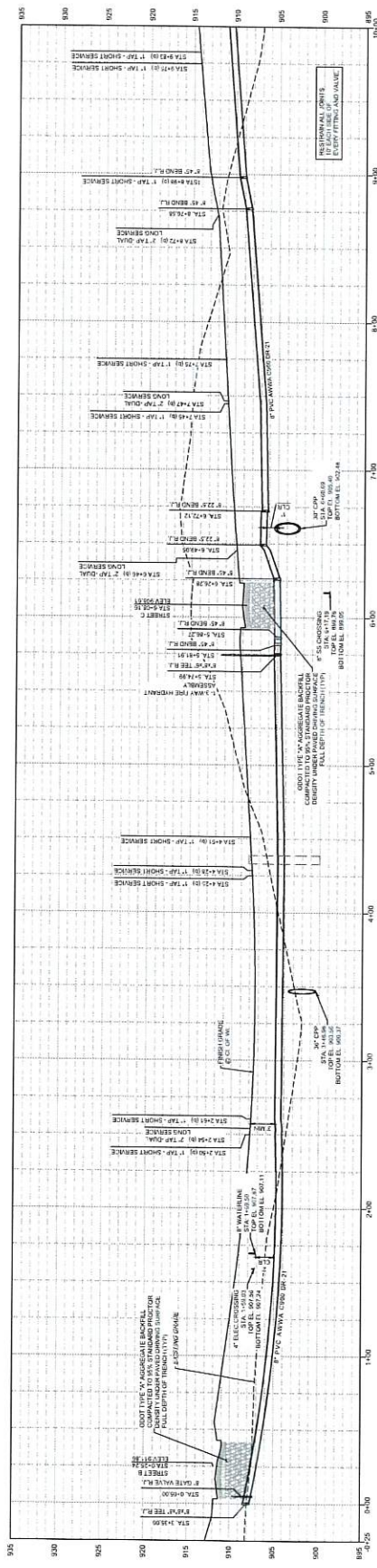


- REINFORCED CONCRETE (EXHIBIT)
- CONCRETE SEWER
- ASPHALT PAVING
- CONCRETE PAVING

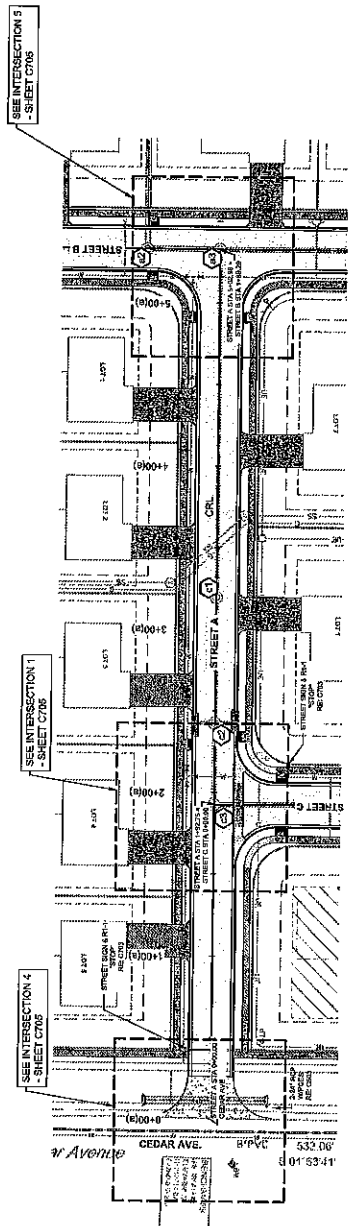
- SEWER
- NEW TOWER POLE - HE C609
- NEW TOWER POLE - HE C608
- UTILITY FACILITY - HE C607
- UTILITY FACILITY - HE C606
- UTILITY FACILITY - HE C605
- UTILITY FACILITY - HE C604
- UTILITY FACILITY - HE C603
- UTILITY FACILITY - HE C602
- UTILITY FACILITY - HE C601
- UTILITY FACILITY - HE C600



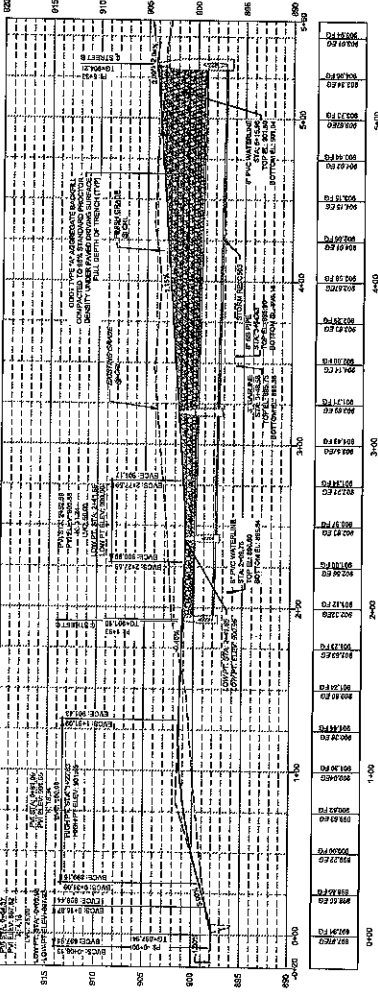
WATERLINE 'B' PLAN
STA 0+00 THRU 10+00
SCALE: 1"=30'



WATERLINE 'B' PROFILE
STA 0+00 THRU 10+00
SCALE: 1"=30' HORIZ, 1"=4' VERT.



STREET A PLAN
STA 0+00 THRU 10+00
SCALE 1"=20'



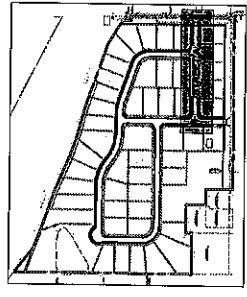
STREET A PROFILE
STA 0+00 THRU 10+00
SCALE: 1"=100' VERTICAL, 1"=20' HORIZONTAL



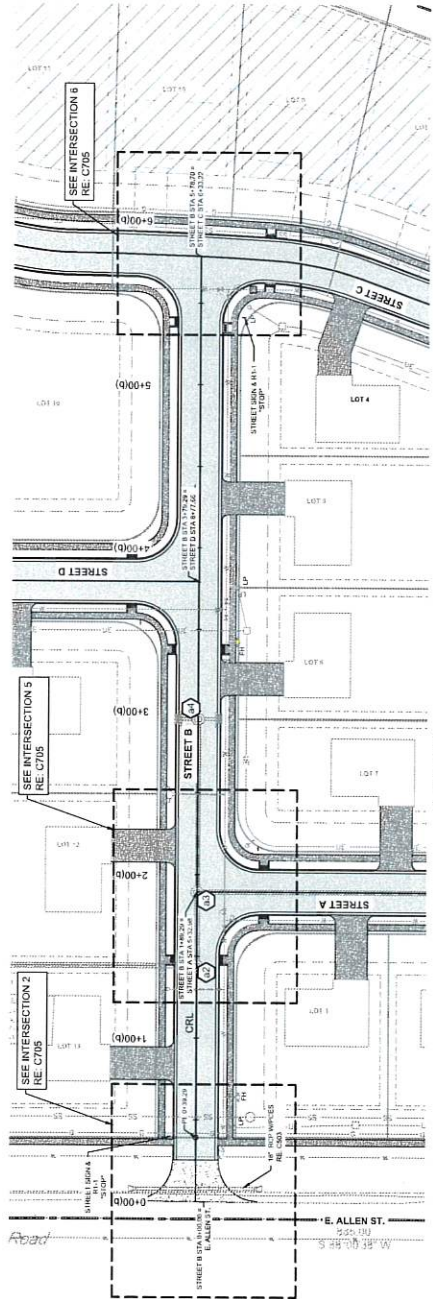
- LEGEND**
- CONCRETE MANHOLE
 - ASPHALT PAVED
 - CONCRETE PAVED

- REVISIONS**
- RDWH SANITARY SEWER
 - PP SANITARY SEWER
 - LDWH SANITARY SEWER
 - LDWH SANITARY SEWER
 - LDWH SANITARY SEWER
 - LDWH SANITARY SEWER
 - LDWH SANITARY SEWER
 - LDWH SANITARY SEWER
 - LDWH SANITARY SEWER
 - LDWH SANITARY SEWER

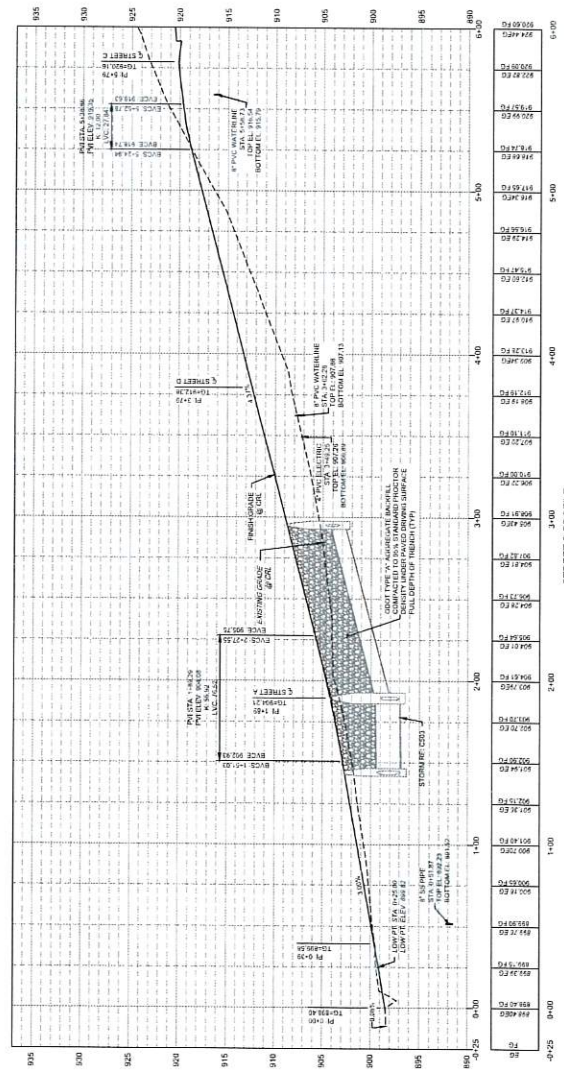
RE C700 FOR GEOMETRICS



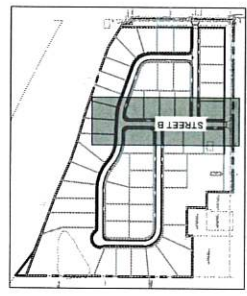
KEY MAP
SCALE 1"=100'



STREET B PLAN
STA 0+00 TO 6+00
SCALE 1/4"=1'-0"



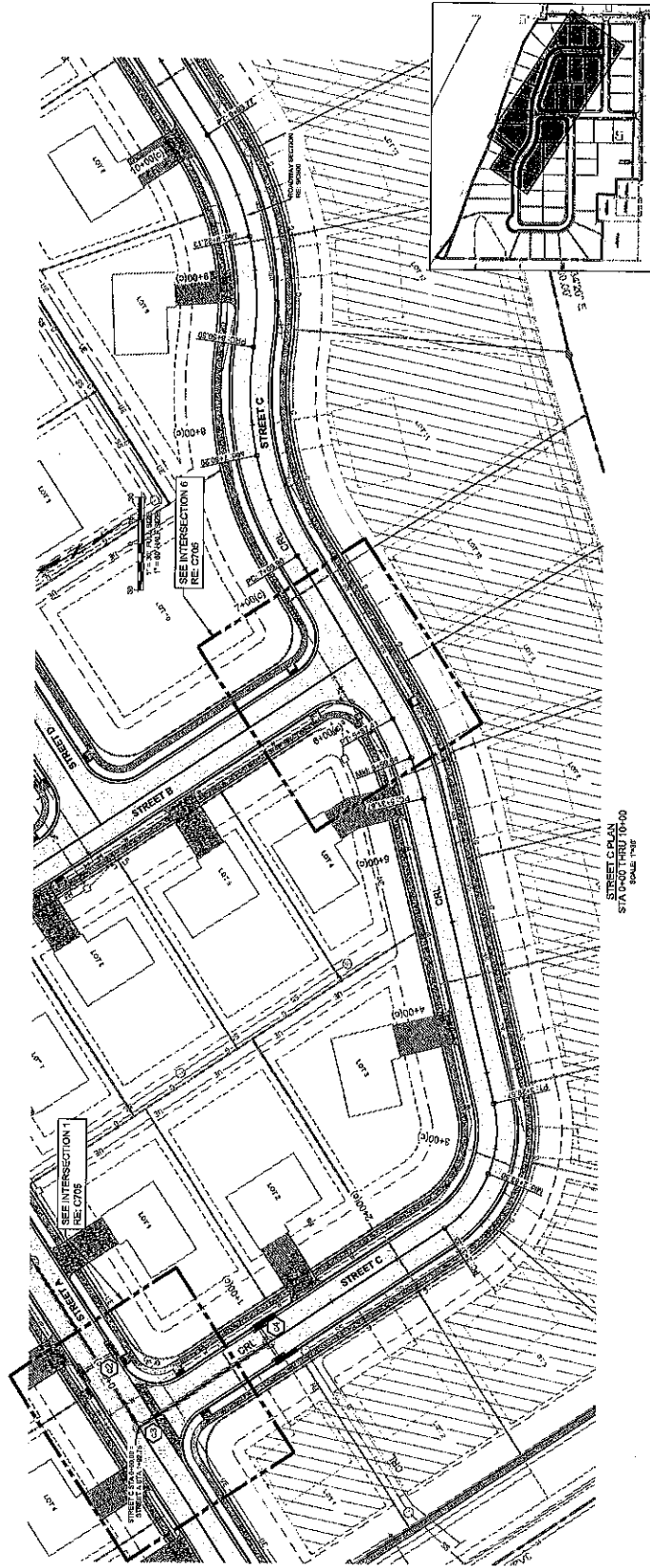
STREET B PROFILE
STA 0+00 THRU 6+00
SCALE 1/4"=1'-0" VERT.



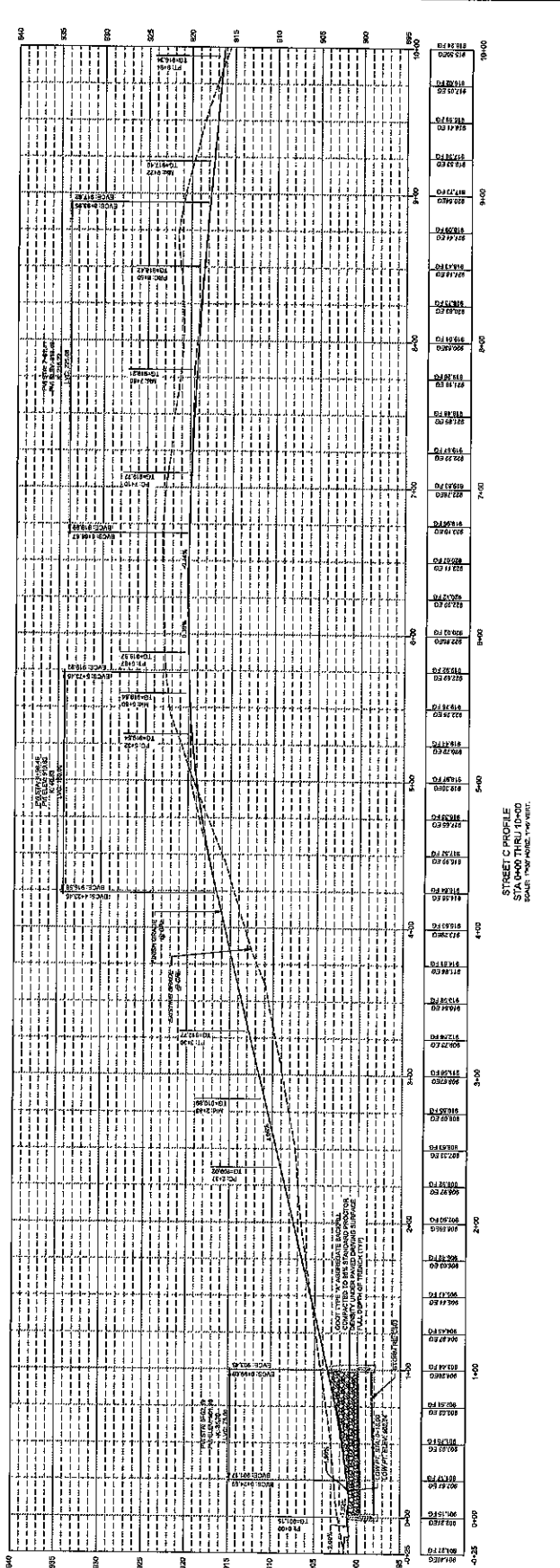
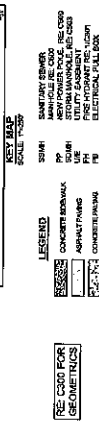
KEY MAP
SCALE 1/4"=1'-0"

- LEGEND**
- CONCRETE SIDEWALK
 - ASPHALT PAVING
 - CONCRETE PARKING
 - SANITARY SEWER
 - WATER MAIN
 - GAS MAIN
 - UTILITY EASEMENT
 - ELECTRICAL MAIN

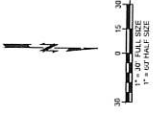
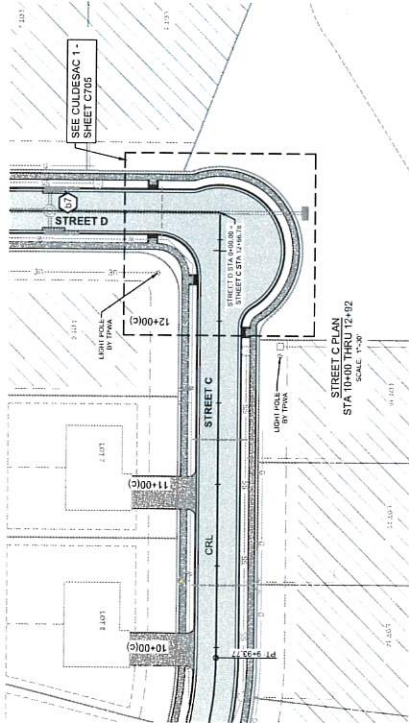
SEE C701 FOR
REQUIREMENTS



STREET C PLAN
STA 0+00 THRU 10+00
SCALE: 1/8" = 1'-0"



STREET C PROFILE
STA 0+00 THRU 10+00
SCALE: 1/8" VERT. = 1'-0" HORIZ.

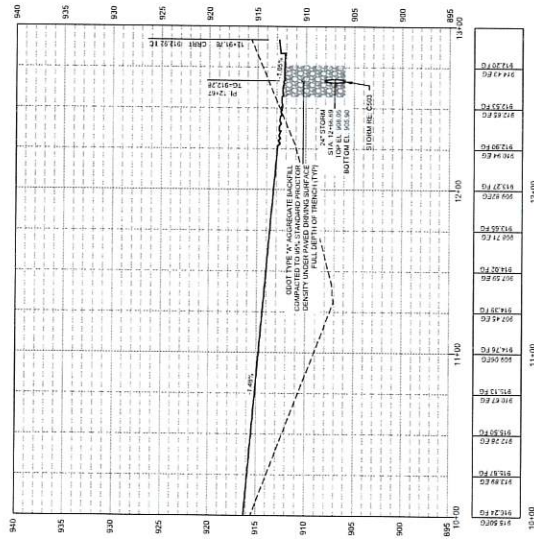
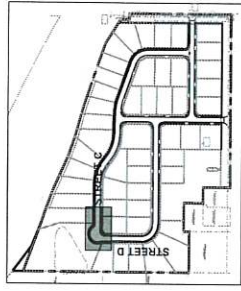


LEGEND

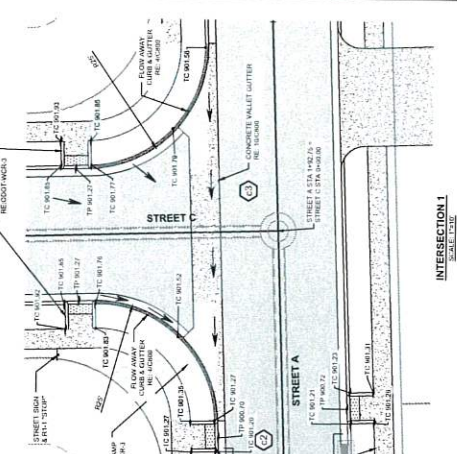
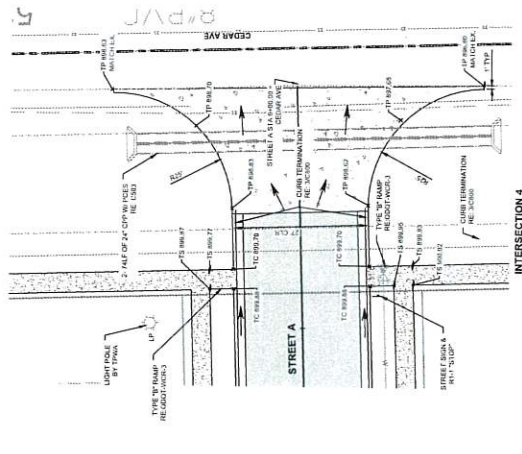
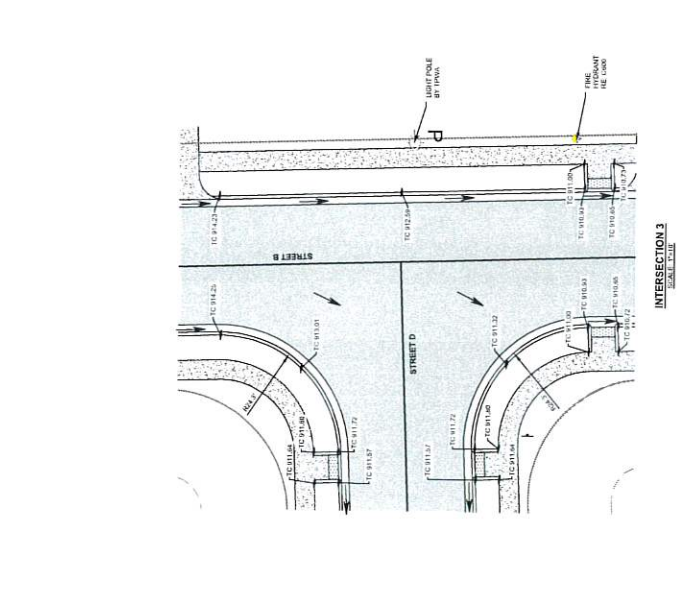
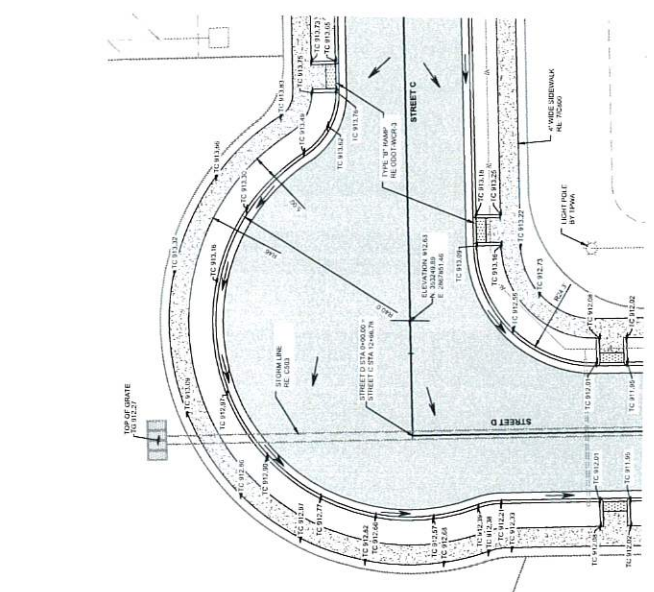
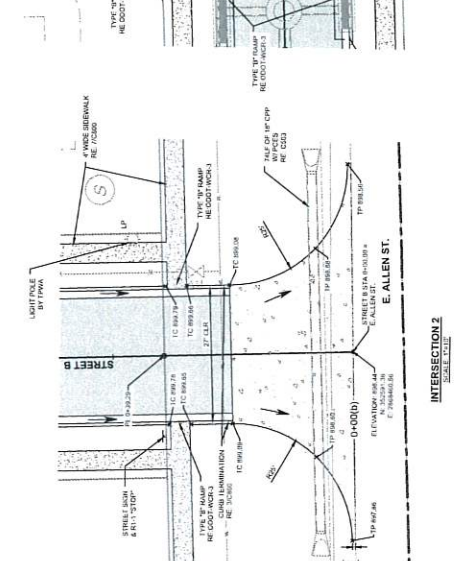
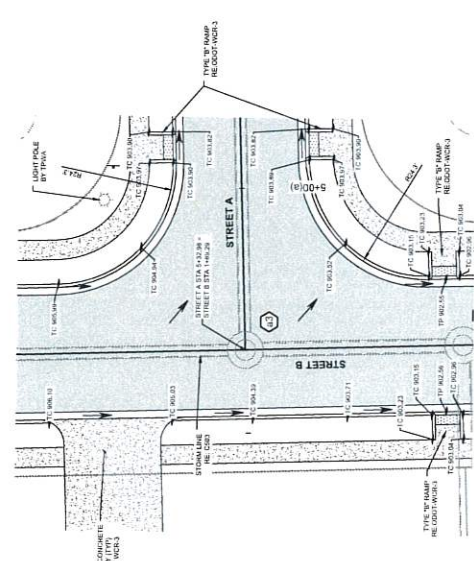
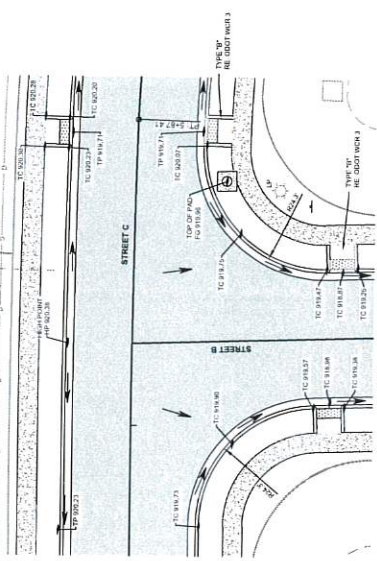
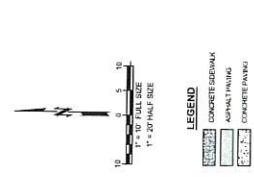
	CONCRETE DRIVEWAY
	ASPHALT PARKING
	CONCRETE PARKING

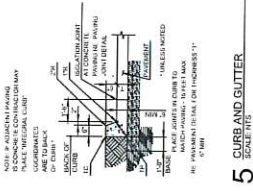
- 588H1 24\"/>
- 588H2 24\"/>
- 588H3 24\"/>
- 588H4 24\"/>
- 588H5 24\"/>
- 588H6 24\"/>
- 588H7 24\"/>
- 588H8 24\"/>
- 588H9 24\"/>
- 588H10 24\"/>
- 588H11 24\"/>
- 588H12 24\"/>
- 588H13 24\"/>
- 588H14 24\"/>
- 588H15 24\"/>
- 588H16 24\"/>
- 588H17 24\"/>
- 588H18 24\"/>
- 588H19 24\"/>
- 588H20 24\"/>
- 588H21 24\"/>
- 588H22 24\"/>
- 588H23 24\"/>
- 588H24 24\"/>
- 588H25 24\"/>
- 588H26 24\"/>
- 588H27 24\"/>
- 588H28 24\"/>
- 588H29 24\"/>
- 588H30 24\"/>
- 588H31 24\"/>
- 588H32 24\"/>
- 588H33 24\"/>
- 588H34 24\"/>
- 588H35 24\"/>
- 588H36 24\"/>
- 588H37 24\"/>
- 588H38 24\"/>
- 588H39 24\"/>
- 588H40 24\"/>
- 588H41 24\"/>
- 588H42 24\"/>
- 588H43 24\"/>
- 588H44 24\"/>
- 588H45 24\"/>
- 588H46 24\"/>
- 588H47 24\"/>
- 588H48 24\"/>
- 588H49 24\"/>
- 588H50 24\"/>
- 588H51 24\"/>
- 588H52 24\"/>
- 588H53 24\"/>
- 588H54 24\"/>
- 588H55 24\"/>
- 588H56 24\"/>
- 588H57 24\"/>
- 588H58 24\"/>
- 588H59 24\"/>
- 588H60 24\"/>
- 588H61 24\"/>
- 588H62 24\"/>
- 588H63 24\"/>
- 588H64 24\"/>
- 588H65 24\"/>
- 588H66 24\"/>
- 588H67 24\"/>
- 588H68 24\"/>
- 588H69 24\"/>
- 588H70 24\"/>
- 588H71 24\"/>
- 588H72 24\"/>
- 588H73 24\"/>
- 588H74 24\"/>
- 588H75 24\"/>
- 588H76 24\"/>
- 588H77 24\"/>
- 588H78 24\"/>
- 588H79 24\"/>
- 588H80 24\"/>
- 588H81 24\"/>
- 588H82 24\"/>
- 588H83 24\"/>
- 588H84 24\"/>
- 588H85 24\"/>
- 588H86 24\"/>
- 588H87 24\"/>
- 588H88 24\"/>
- 588H89 24\"/>
- 588H90 24\"/>
- 588H91 24\"/>
- 588H92 24\"/>
- 588H93 24\"/>
- 588H94 24\"/>
- 588H95 24\"/>
- 588H96 24\"/>
- 588H97 24\"/>
- 588H98 24\"/>
- 588H99 24\"/>
- 588H100 24\"/>

RE C300 FOR GEOMETRICS

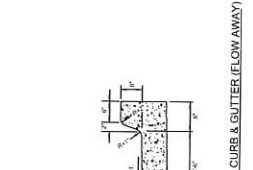


STREET C PROFILE
STA 10+00 THRU 12+92
SCALE: HORIZONTAL: H=5 VERT.

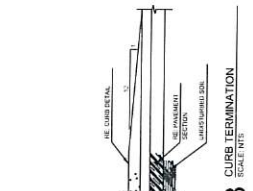




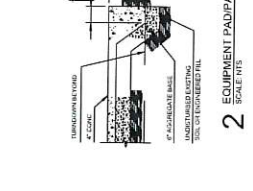
1 PAVEMENT TRANSITION
 SCALE: 1/8\"/>



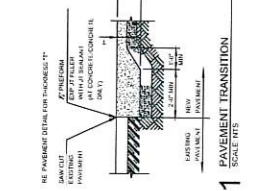
2 EQUIPMENT PAD/PATIO
 SCALE: 1/8\"/>



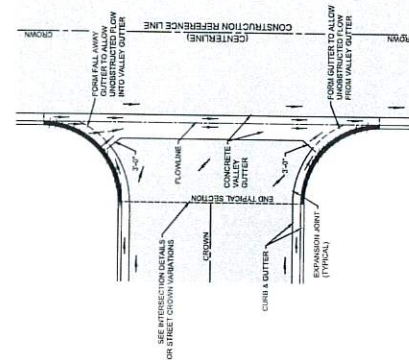
3 CURB TERMINATION
 SCALE: 1/8\"/>



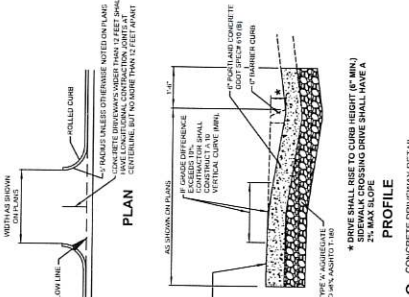
4 6\"/>



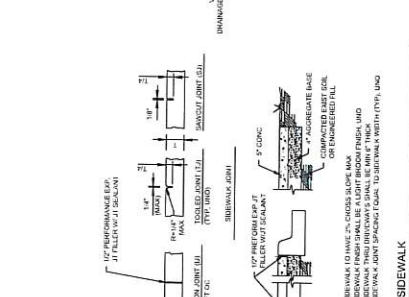
5 CURB AND GUTTER
 SCALE: 1/8\"/>



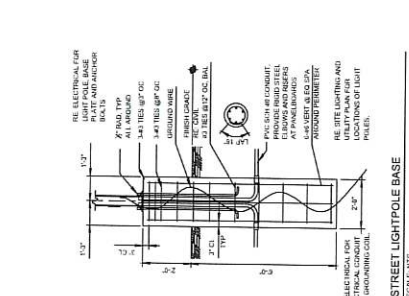
6 STREET LIGHT POLE BASE
 SCALE: 1/8\"/>



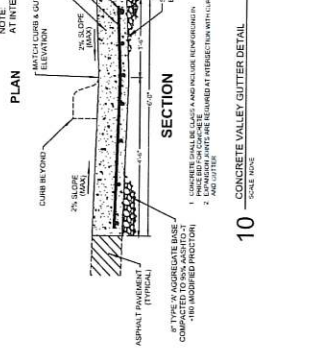
7 SIDEWALK
 SCALE: 1/8\"/>



8 CONCRETE DRIVEWAY DETAIL
 SCALE: 1/8\"/>



9 TYPICAL SECTION - RESIDENTIAL ROADWAY
 SCALE: 1/8\"/>



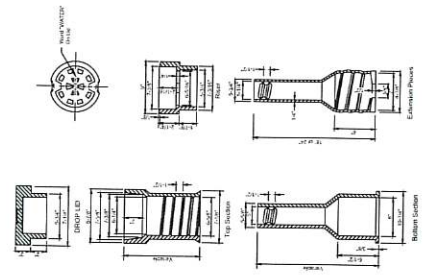
10 CONCRETE VALLEY GUTTER DETAIL
 SCALE: 1/8\"/>

NOTE: 1. PAVEMENT FINISHING SHALL BE ACCORDING TO THE 2019 MUTUAL LIGHT PAVING MANUAL.

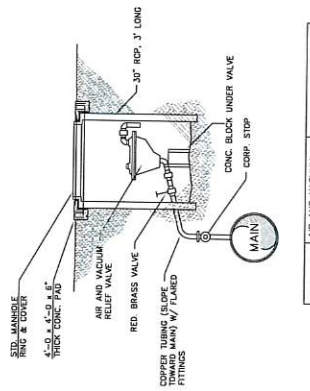
NOTE: AT INTERSECTION, MATCH CURB & GUTTER ELEVATION TO CLASS A CONCRETE SUBGRADE.



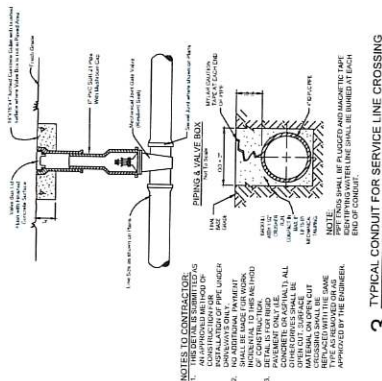
CAUTION
 NOTICE TO CONTRACTOR
 THE CONTRACTOR IS RESPONSIBLE FOR VERIFYING THE LOCATION AND DEPTH OF ALL UTILITIES PRIOR TO CONSTRUCTION. THE CONTRACTOR SHALL BE RESPONSIBLE FOR THE LOCATION AND DEPTH OF ALL UTILITIES PRIOR TO CONSTRUCTION. THE CONTRACTOR SHALL BE RESPONSIBLE FOR THE LOCATION AND DEPTH OF ALL UTILITIES PRIOR TO CONSTRUCTION.



4 VALVE BOX (CAST IRON)
SCALE: NTS



7 AIR RELIEF VALVE DETAIL
SCALE: NTS

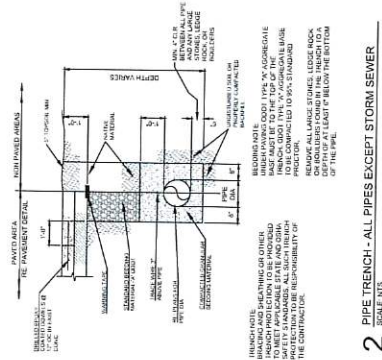


3 TYPICAL CONDUIT FOR SERVICE LINE CROSSING
SCALE: NTS

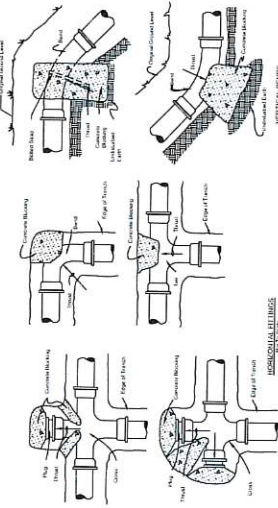
Pipe Size (in)	45 Bedding (cu ft)	22.5 Bedding (cu ft)	Bedding (cu ft)	Block (cu ft)
2.0	8.47	0.25	0.58	0.13
2.5	10.59	0.31	0.73	0.16
3.0	13.11	0.38	0.88	0.20
3.5	15.63	0.45	1.03	0.24
4.0	18.15	0.52	1.18	0.28
4.5	20.67	0.59	1.33	0.32
5.0	23.19	0.66	1.48	0.36
5.5	25.71	0.73	1.63	0.40
6.0	28.23	0.80	1.78	0.44

NOTE: THRUST BLOCK SHALL BE PLACED AND MADE TO THE TYPICAL DETAIL. THE THRUST BLOCK SHALL BE BUILT UP TO THE END OF CONDUIT.

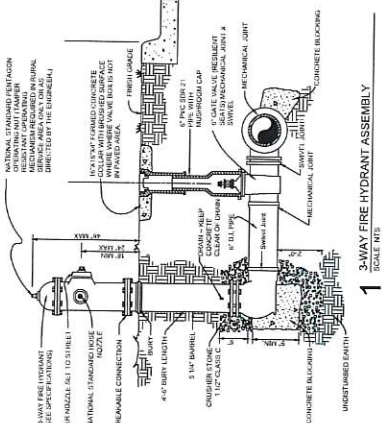
THRUST BLOCK NOTES:
1. ALL BEDDING SHALL BE ON UNDEVELOPED GROUND.
2. ALL BEDDING SHALL BE ON UNDEVELOPED GROUND.
3. ALL BEDDING SHALL BE ON UNDEVELOPED GROUND.
4. ALL BEDDING SHALL BE ON UNDEVELOPED GROUND.
5. ALL BEDDING SHALL BE ON UNDEVELOPED GROUND.



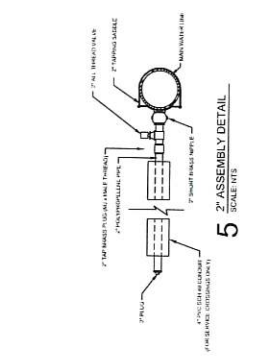
2 PIPE TRENCH - ALL PIPES EXCEPT STORM SEWER
SCALE: NTS



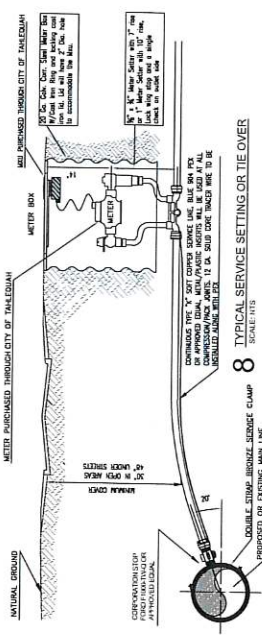
6 TYPICAL THRUST BLOCKING
SCALE: NTS



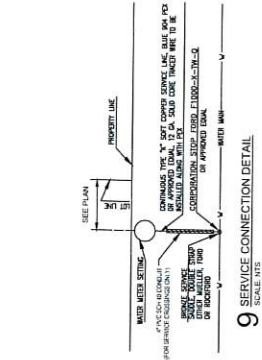
1 3-WAY FIRE HYDRANT ASSEMBLY
SCALE: NTS



5 2-WAY ASSEMBLY DETAIL
SCALE: NTS



8 TYPICAL SERVICE SETTING OR TIE OVER
SCALE: NTS



9 SERVICE CONNECTION DETAIL
SCALE: NTS