



ACCESSORIES & OPTIONS

- Air Conditioning
- Air Shut-off Valve
- Arctic Package
- Auxiliary Electrics
- Boom Prop
- Brick Guards
- Enclosed Cab
- Fenders
- Hydraulic Coupler
- LED Worklight Package
- Load Stability Indication (LSI)
- Multifunction Display with Multi-Reverse Camera System
- Reverse Sensing System
- Ride Control
- Road Light Package
- Seatbelt Engagement & Operator Presence
- White Noise Back-up Alarm
- Wiper Package
- Work Lights

ATTACHMENTS

Standard Carriage	50-in 1.3-m 60-in 1.5-m 72-in 1.8-m 96-in 2.4-m	
Side-Tilt Carriage	50-in 1.3-m 60-in 1.5-m 72-in 1.8-m	
Swing 90° Carriage	72-in 1.8-m	
Swing 180° Carriage	72-in 1.8-m	
Dual Fork Positioning Carriage	50-in 1.3-m 72-in 1.8-m	
Side-Shift Carriage	48-in 1.2-m	
Tower with Side Tilt	8-ft 2.4-m	
Pallet Forks	2.36-in x 4-in x 48-in 2.36-in x 5-in x 48-in 2.36-in x 5-in x 60-in 2-in x 6-in x 72-in	60-mm x 102-mm x 1.2-m 60-mm x 127-mm x 1.2-m 60-mm x 127-mm x 1.5-m 51-mm x 152-mm x 1.8-m
Lumber Forks	2.36-in x 5-in x 96-in 2.00-in x 7-in x 60-in 2.36-in x 6-in x 60-in 2-in x 2-in x 48-in	60-mm x 127-mm x 2.4-m 51-mm x 178-mm x 1.5-m 60-mm x 152-mm x 1.5-m 51-mm x 51-mm x 1.2-m
Cubing Forks	72-in, 6,000-lb Capacity	
Pipe Grapple	72-in, 1.0-cu yd 96-in, 1.5-cu yd 102-in, 2.0-cu yd	1.8-m, 0.76-m ³ 2.4-m, 1.15-m ³ 2.6-m, 1.53-m ³
Material Bucket	12-ft, 2,000-lb 15-ft, 2,000-lb 3-ft w/ winch, 4,000-lb Capacity 12-ft w/ winch, 2,000-lb Capacity	3.7-m, 907-kg 4.6-m, 907-kg 0.9-m, 1,814-kg Capacity 3.7-m, 907-kg
Truss Boom	8-ft, 1,000-lb Capacity	2.4-m, 455-kg Capacity
Fork Mounted Work Platform		
Lifting Hook-Fork Mounted		
Lifting Hook-Coupler Mounted		
Fork Mounted Extendable Truss		
Sheet Material Handler		

STANDARD SPECIFICATIONS

Performance

Rated Capacity	10,000-lb / 4,536-kg
Maximum Lift Height	55-ft / 16.76-m
Load at Max Height*	5,000-lb / 2,268-kg
Maximum Forward Reach	42-ft / 12.8-m
Load at Max Reach*	3,000-lb / 1,361-kg
Frame Leveling	10 Degrees
Lift Speed (boom retracted) Up	14 seconds
Lift Speed (boom retracted) Down	11 seconds
Boom Speed Extended	16 seconds
Boom Speed Retracted	15 seconds
Top Travel Speed (4-Speed)	20 mph / 30 kph
Drawbar Pull (loaded)	25,400-lb / 113-kN
Outside Turning Radius	14-ft / 4.3-m
Operating Weight	31,559-lb / 14,315-kg

*Outriggers are required to achieve stated capacity

Engine

Make and Model	Cummins F3.8L
No. of Cylinders	4
Displacement	231.9-cu in / 4.5 L
Gross Power Basic	134 hp / 100 kW
Maximum Torque @ 1500 rpm	360-lb/ft / 488 Nm
Fuel Tank Capacity	38.3 gal / 145 L

Transmission

Powershift 4-speed forward and 3-speed reverse.

Axles

Trunnion mounted planetary 55° steer axles. Integral steer cylinder. High bias limited slip differential on front axle.

Brakes

Service brakes are inboard wet disc brake on front and rear axles. Parking brakes are wet disc spring-applied hydraulic release on front axle.

Tires

Standard	400/75-28
Optional	Foam-Filled, Solid, Non-marking (Pneumatic, Foam-Filled or Solid), Pneumatic 14 x 24-16PR

Cab

- Adjustable suspension seat
- Anti-theft
- Certified ROPS/FOPS structure
- Clearsky Smart Fleet™ Hardware (CS550)
- Horn
- Integrated arm rest
- LED motion/amber beacon (CS550)
- Single joystick controls
- Tilt on joystick

Steering 4-Wheel

Power steering.
Operator selectable 4-wheel circle, 4-wheel crab, 2-wheel front.

Instruments

- DEF gauge
- Engine oil pressure gauge
- Fuel gauge
- Hour meter
- Temperature gauge
- Volt meter

Hydraulic System-Implement

Capacity	48.6 gal / 184 L
----------	------------------

Max. auxiliary flow to the boom head 25 gpm/95 lpm. Load sense piston pump. Auxiliary hydraulics used for all attachments equipped with cylinders or other hydraulic components.

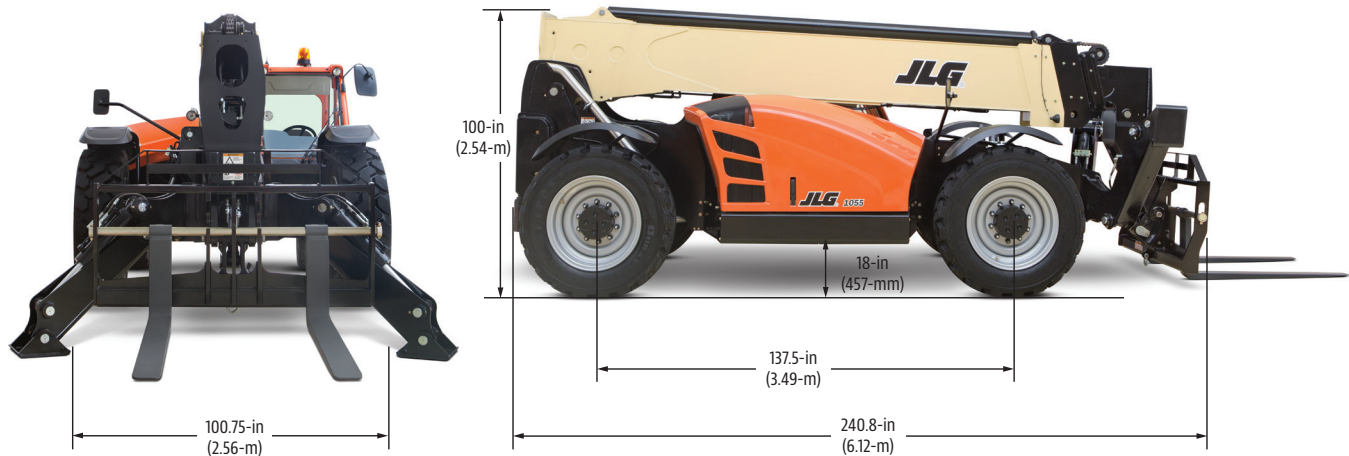
1055

TELEHANDLER

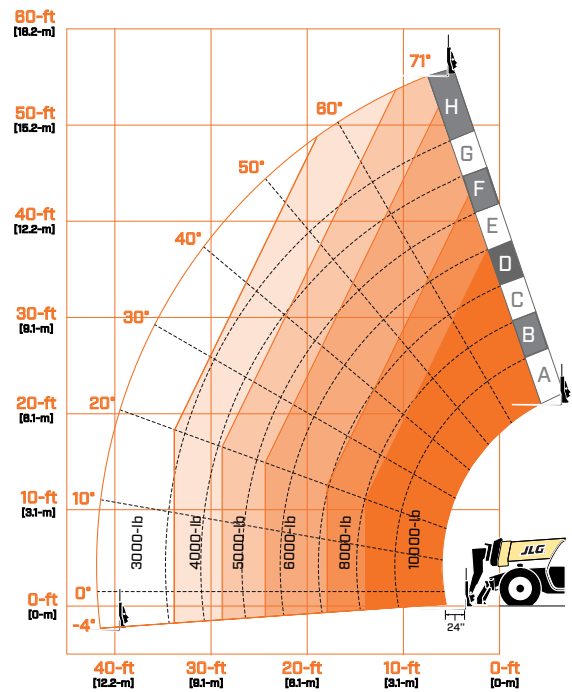
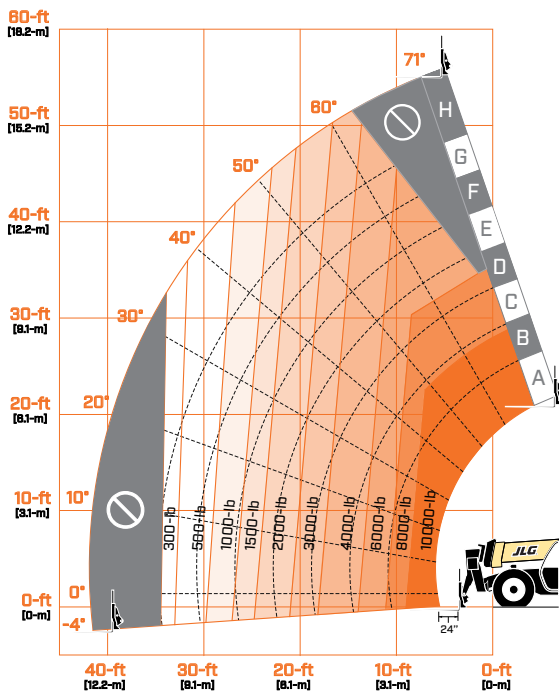


DIMENSIONS

All dimensions are approximate



LOAD CHART



We provide coverage for one (1) full year on the entire machine, two (2) full years or 2,000 hours on the drivetrain and cover all specified major structural components for five (5) years. Due to continuous product improvements, we reserve the right to make specification and/or equipment changes without prior notification.



JLG INDUSTRIES, INC.
Toll-free US 877-JLG-LIFT
JLG.com

An Oshkosh Corporation Company