



PLANS FOR
 2 BEDROOM DUPLEX
 968 SQUARE FEET
~~BIRDTAIL COMPLEX~~
 OCHELATA DUPLEXES

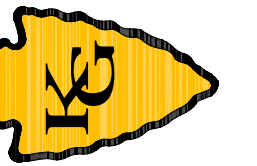
SHEET INDEX

SHEET NO.	DESCRIPTION
A101	TITLE SHEET
A102	FLOOR PLAN
A103	CABINET ELEV./HVAC CLOSET FRAMING
A104	FOUNDATION PLAN
A105	FOUNDATION PLAN DETAILS/WALL SECTION DETAIL
A106	ELEVATIONS
A107	TRUSS FRAMING
M101	HVAC PLANS
P101	WASTE AND VENT PLUMBING PLANS
P102	DOMESTIC WATER PLANS
E101	ELECTRICAL PLAN



ISSUED FOR CONSTRUCTION
 JUNE 24, 2022

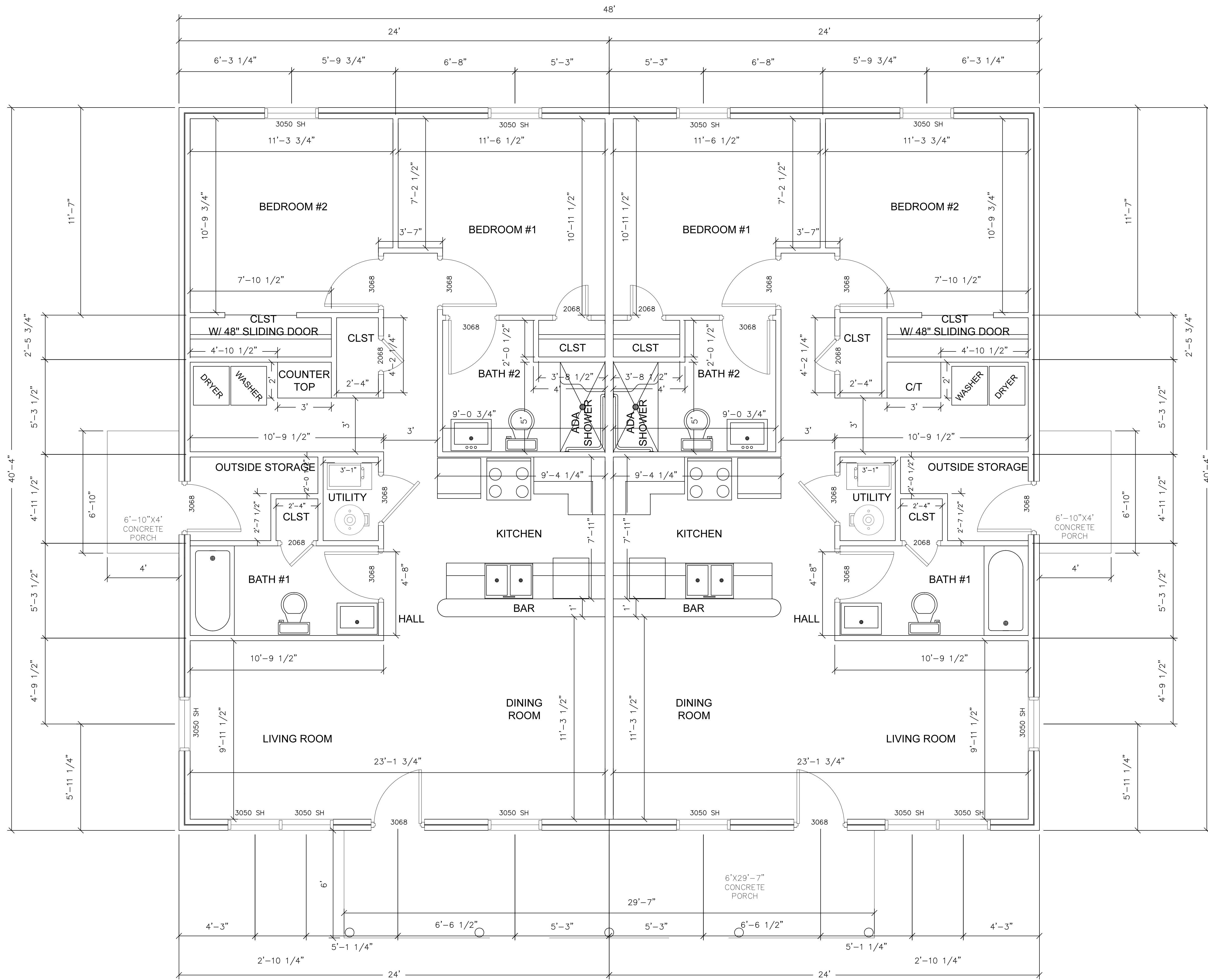
ENGINEER
 KAS Gales Company
 Consulting Engineers
 18772 Harmon Road
 Fayetteville, AR 72704
 Wk. 479.361.9977 Cell 479.422.0763
 Email: carl.d.gales@gmail.com



Housing Authority of the Cherokee Nation		2 Bedroom Duplex Birdtail Complex		Title Sheet	
DESIGNED BY:	APPROVED BY:	DATE PREPARED:	DATE	BY	NO.
DRAWN BY:	CDC	March 2022	6/17/22	SM	0
REVISION	NO.	DATE	BY	NO.	NO.
0					

A101
 SHEET NO.

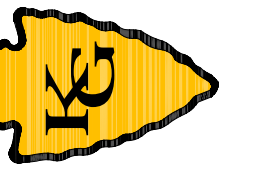
968 SQUARE FOOT



C/T=COUNTER TOP

SCALE
3/8" = 1'

ENGINEER
KAS Gales Company
 Consulting Engineers
 18772 Harmon Road
 Fayetteville, AR 72704
 WK. 479.361.9977 Cell 479.422.0763
 Email: carid.gales@gmail.com



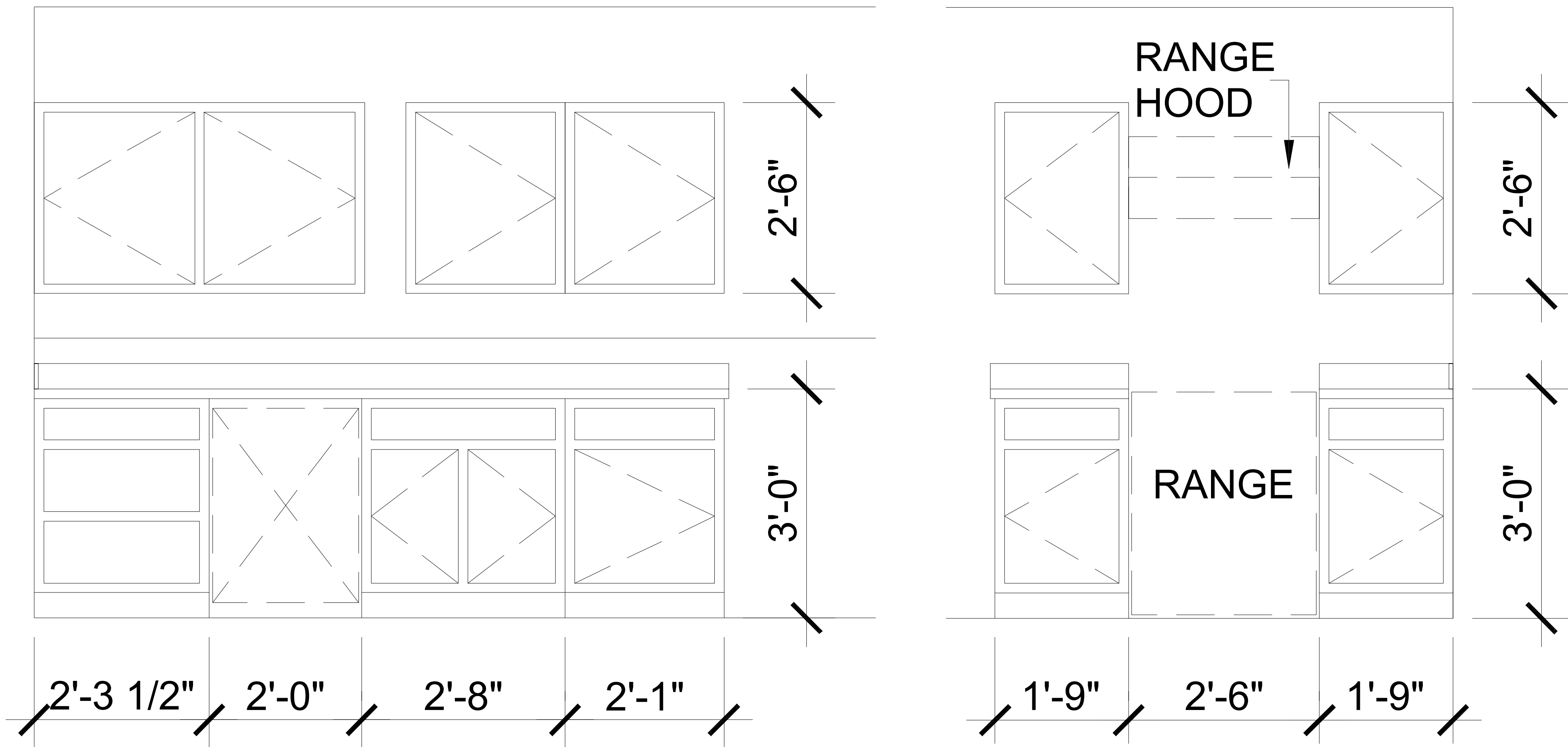
Housing Authority of the Cherokee Nation
 2 Bedroom Duplex Birdtail Complex
 Floor Plan

NO.	REVISION	DATE	BY
0	REVISED UTILITY CLOSET, OUTSIDE STORAGE, AND WASHER AND DRYER AREA	6/17/22	MDD

A102
 SHEET NO.

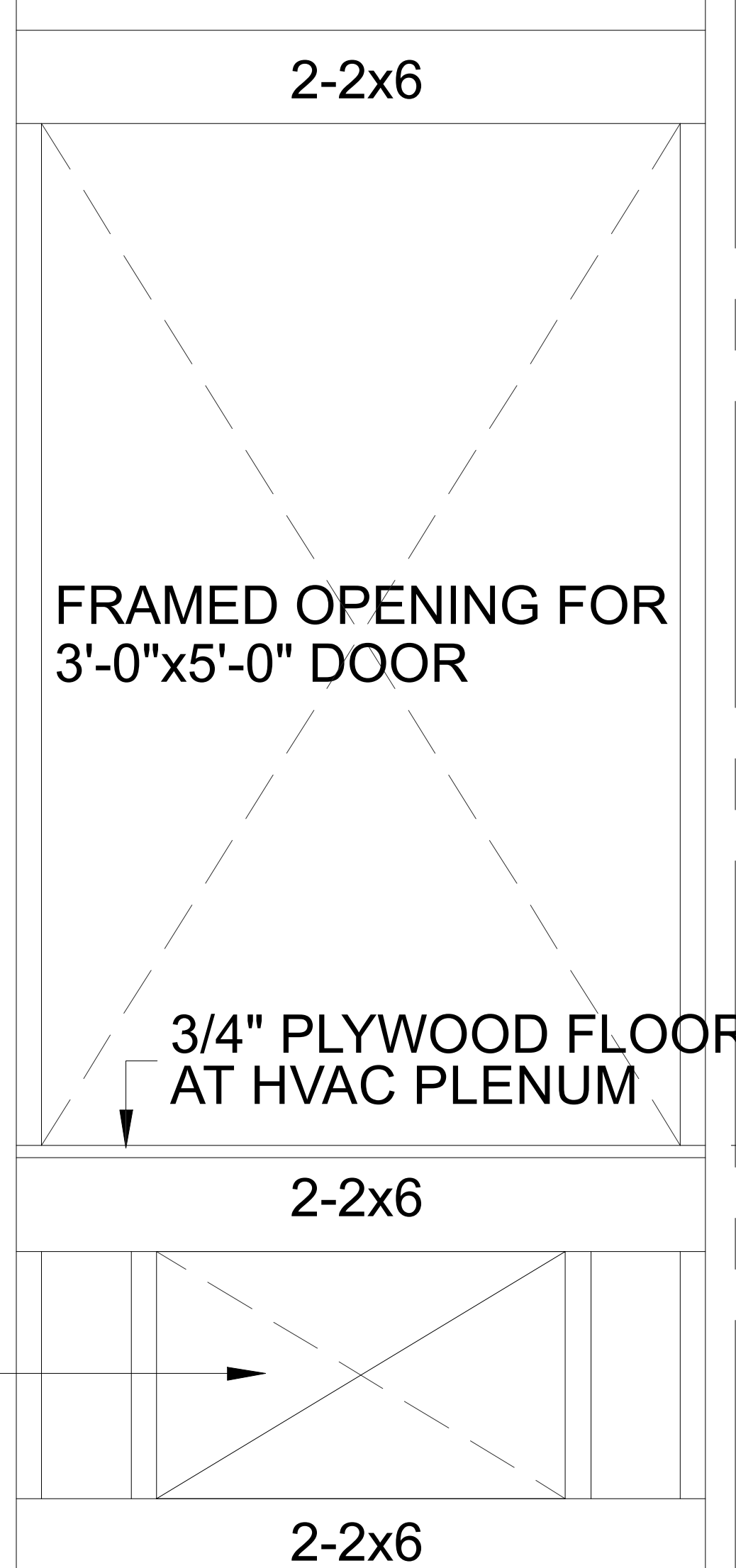
DESIGNED BY: MDD
 DRAWN BY: MDD
 APPROVED BY: CDG
 DATE PREPARED: March, 2022

CABINET ELEVATION
SCALE 1"=1/2"=1'



CEILING LINE

CENTERLINE WALL

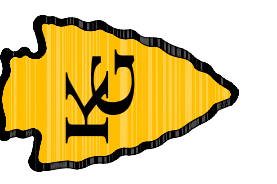


FRAMED OPENING FOR RETURN AIR GRILLED - VERIFY EXACT R.O. WITH HVAC

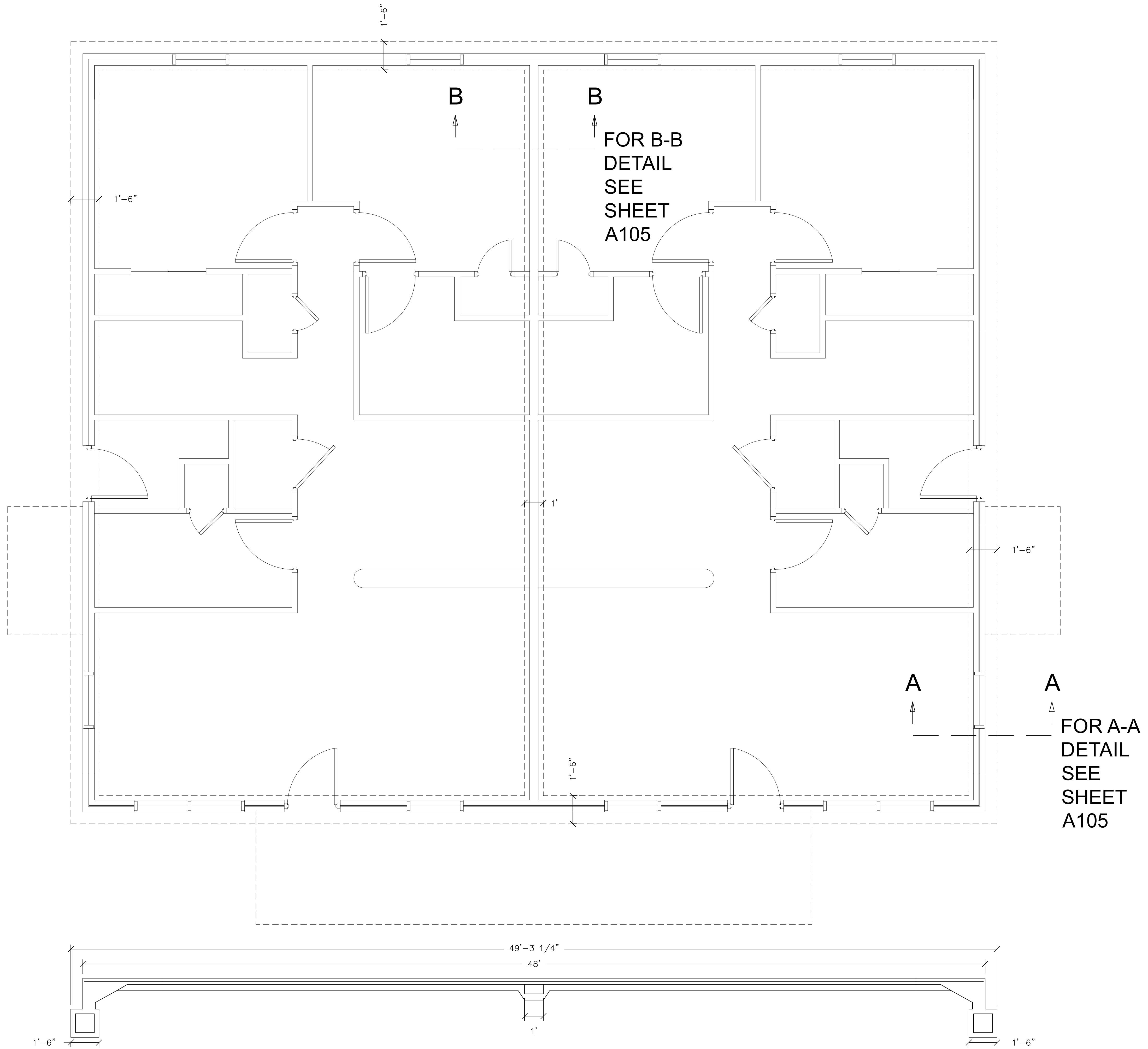
FRAMED OPENING FOR 3'-0"x5'-0" DOOR

3/4" PLYWOOD FLOOR AT HVAC PLENUM

HVAC CLOSET FRAMING
SCALE 1"=1/2"=1'

ENGINEER

KAS Gales Company
 Consulting Engineers
 18772 Harmon Road
 Fayetteville, AR 72704
 WK: 479.361.9977 Cell 479.422.0763
 Email: carl.d.gales@gmail.com

Housing Authority of the Cherokee Nation 2 Bedroom Duplex Birdtail Complex Cabinet Elev/HVAC Clst Plan	
DESIGNED BY:	MDD
DRAWN BY:	MDD
APPROVED BY:	CDC
DATE PREPARED:	March, 2022
NO.	BY
0	6/17/22
REVISION	DATE
REVISED UTILITY CLOSET, OUTSIDE STORAGE, AND WASHER AND DRYER AREA	



SCALE
3/8" = 1'

ENGINEER
KAS Gales Company
 Consulting Engineers
 18772 Harmon Road
 Fayetteville, AR 72704
 Wk. 479.361.9977 Cell 479.422.0763
 Email: carl.d.gales@gmail.com

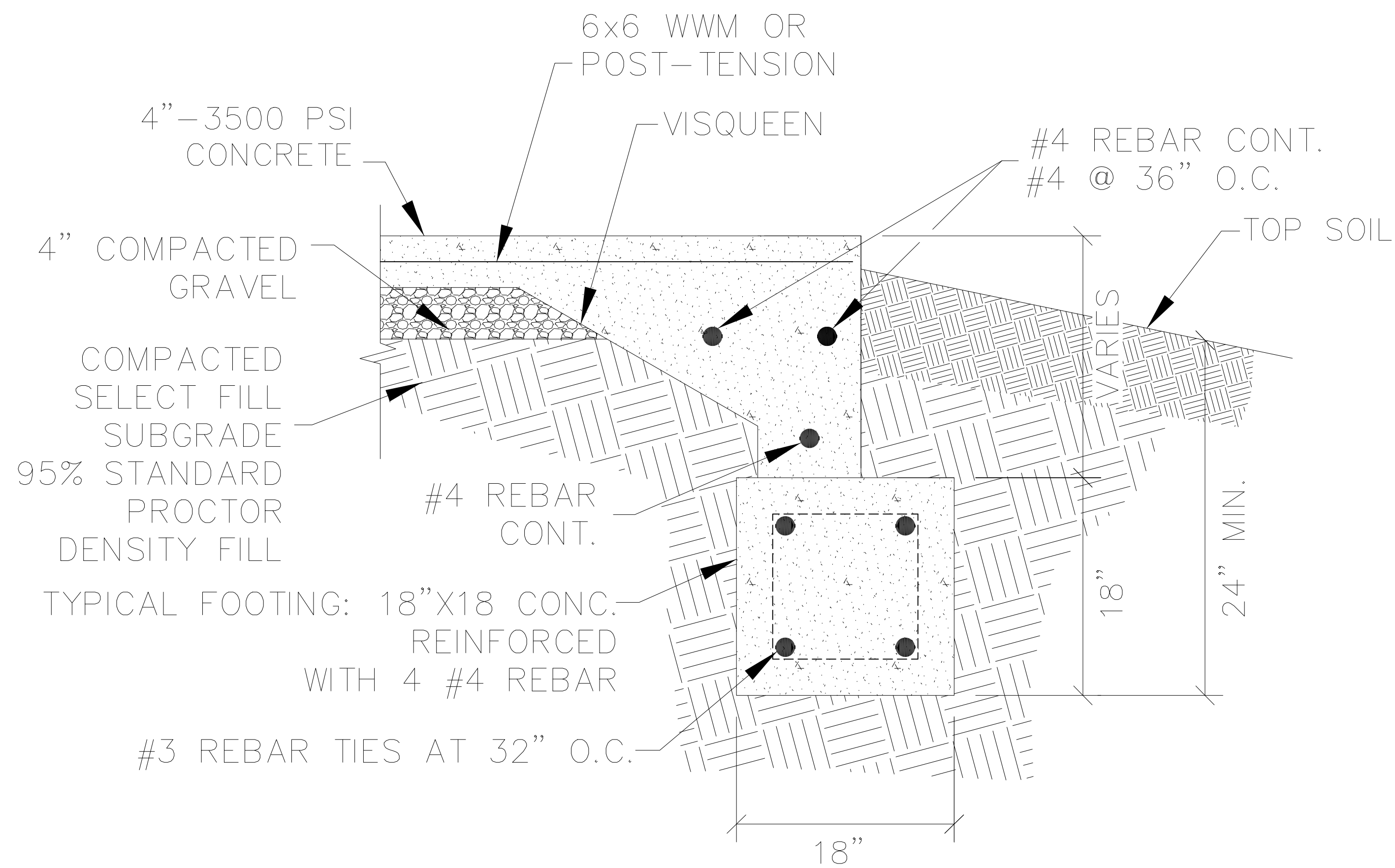


Housing Authority of the Cherokee Nation
 2 Bedroom Duplex Birdtail Complex
 Floor Plan

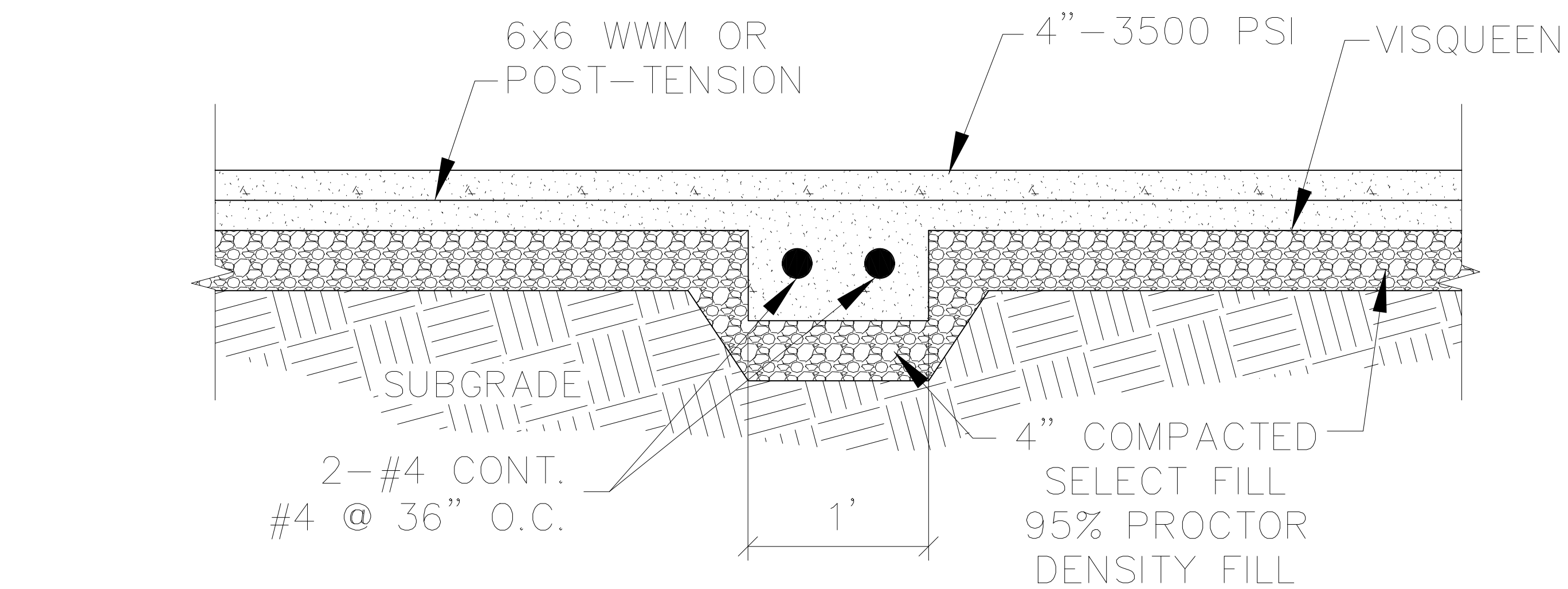
DESIGNED BY:	MDD	APPROVED BY:	CDG
DRAWN BY:	MDD	DATE PREPARED:	March, 2022

NO.	REVISION	DATE	BY
0	REVISED UTILITY CLOSET, OUTSIDE STORAGE, AND WASHER AND DRYER AREA	6/17/22	MDD

A104
SHEET NO.

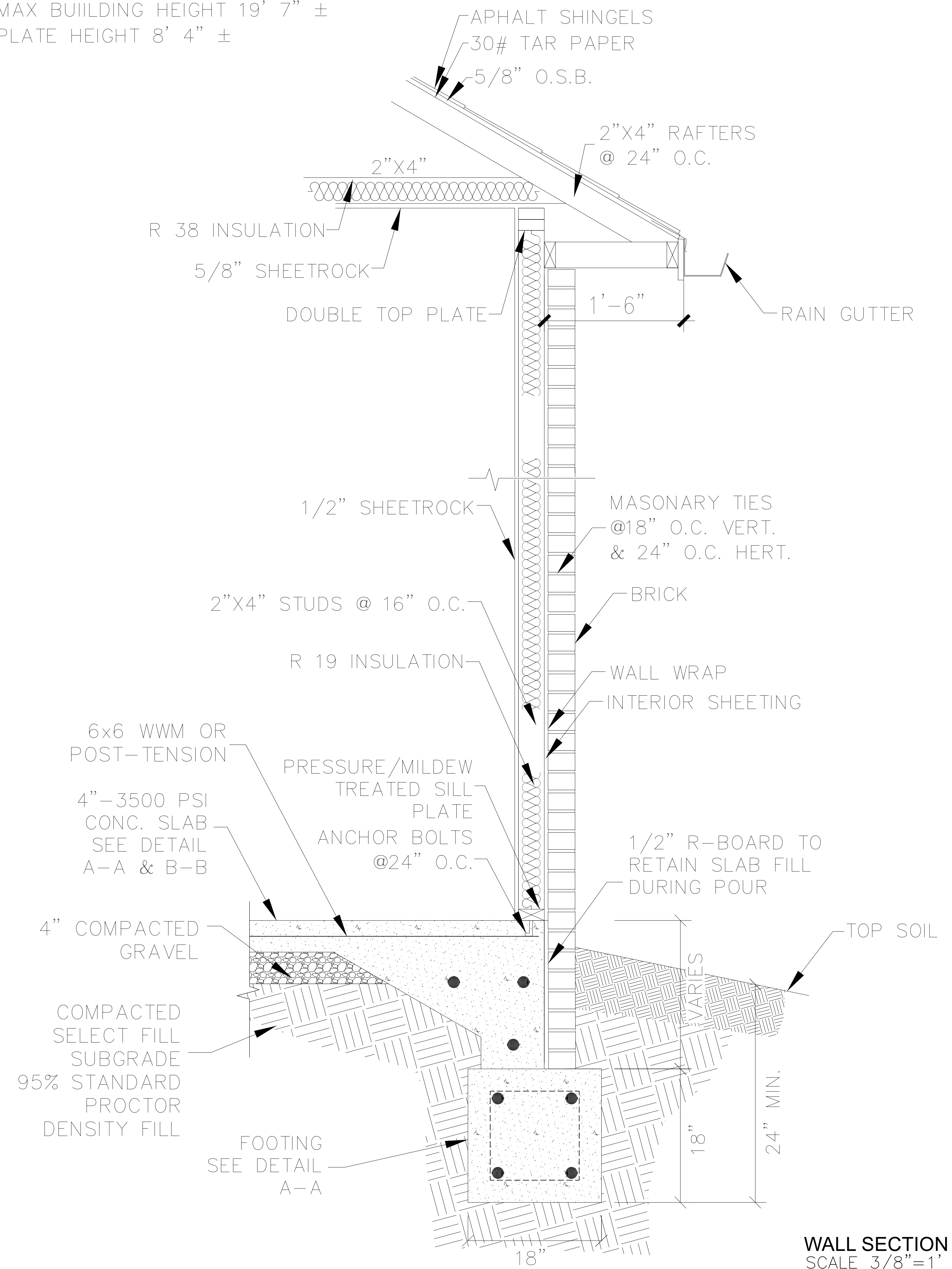


**A-A SECTION
FOUNDATION DETAIL**
SCALE N.T.S.

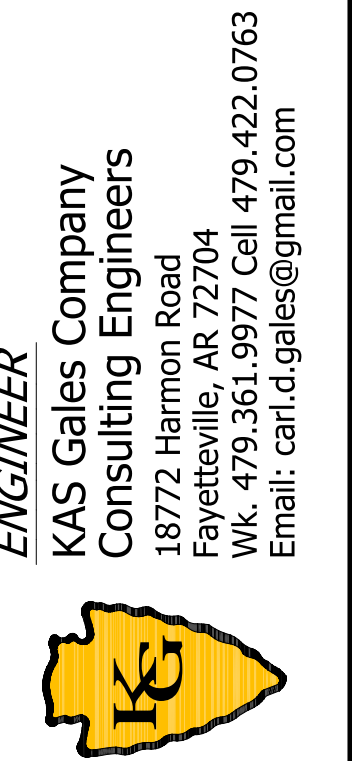


**B-B SECTION
FOUNDATION DETAIL**
SCALE N.T.S.

MAX BUILDING HEIGHT 19' 7" ±
PLATE HEIGHT 8' 4" ±



WALL SECTION
SCALE 3/8"=1'



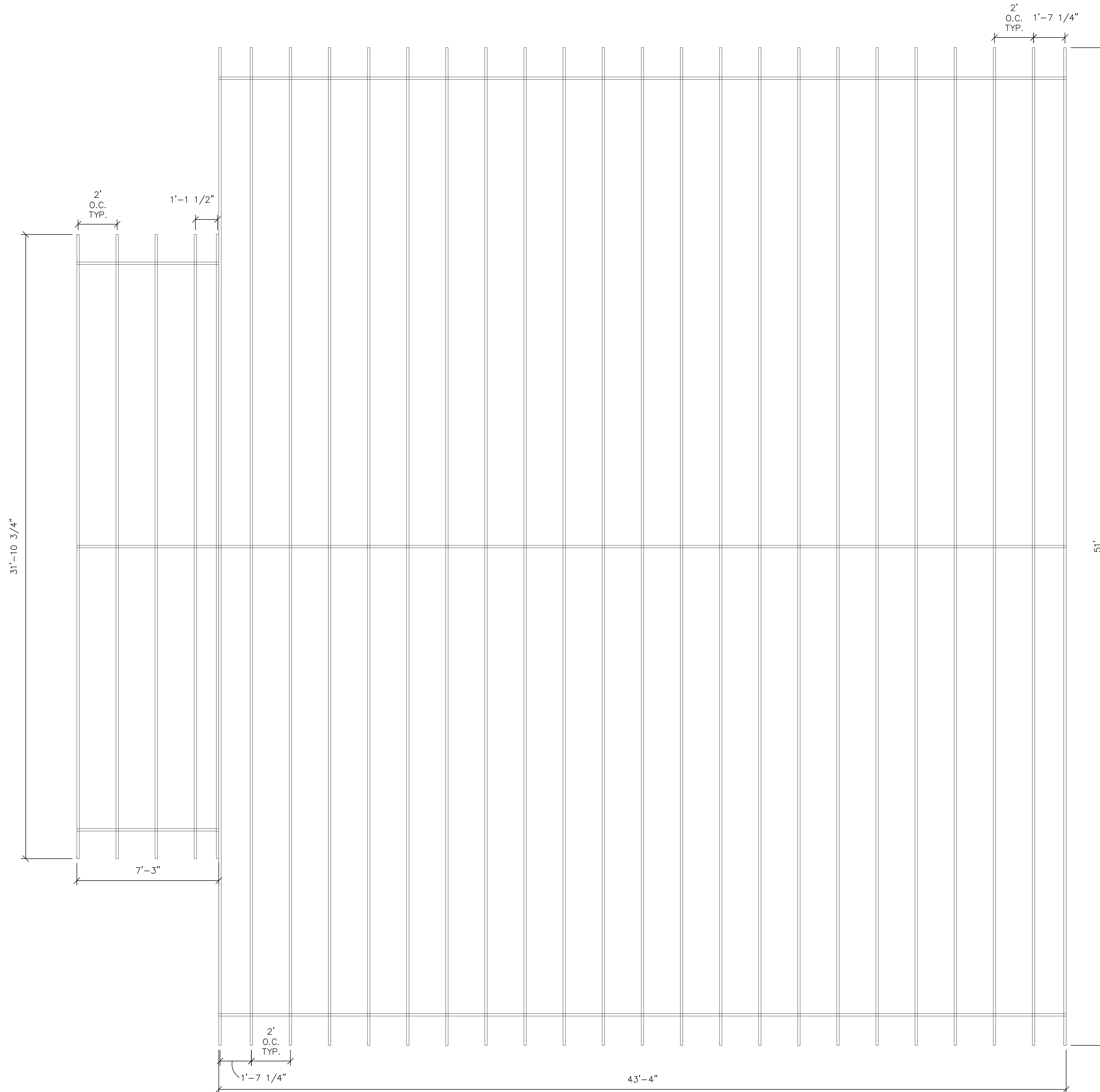
ENGINEER
KAS Gales Company
Consulting Engineers
18772 Harmon Road
Fayetteville, AR 72704
WK. 479.361.9977 Cell 479.422.0763
Email: carl.d.gales@gmail.com

Housing Authority of the Cherokee Nation		2 Bedroom Duplex Birdtail Complex		DESIGNED BY:	MDD
Foundation Details		Foundation Details		DRAWN BY:	MDD
				APPROVED BY:	CDC
				DATE PREPARED:	March, 2022

NO.	REVISION	DATE	BY
0	REVISED UTILITY CLOSET, OUTSIDE STORAGE, AND WASHER AND DRYER AREA	6/17/22	MDD

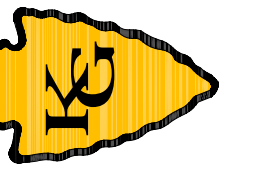
A105
SHEET NO.

NOTE:
 DUPLEX AND PORCH
 TRUSSES MADE BY
 OTHERS.



SCALE
 3/8" = 1'

ENGINEER
 KAS Gales Company
 Consulting Engineers
 18772 Harmon Road
 Fayetteville, AR 72704
 WK. 479.361.9977 Cell 479.422.0763
 Email: carid.gales@gmail.com



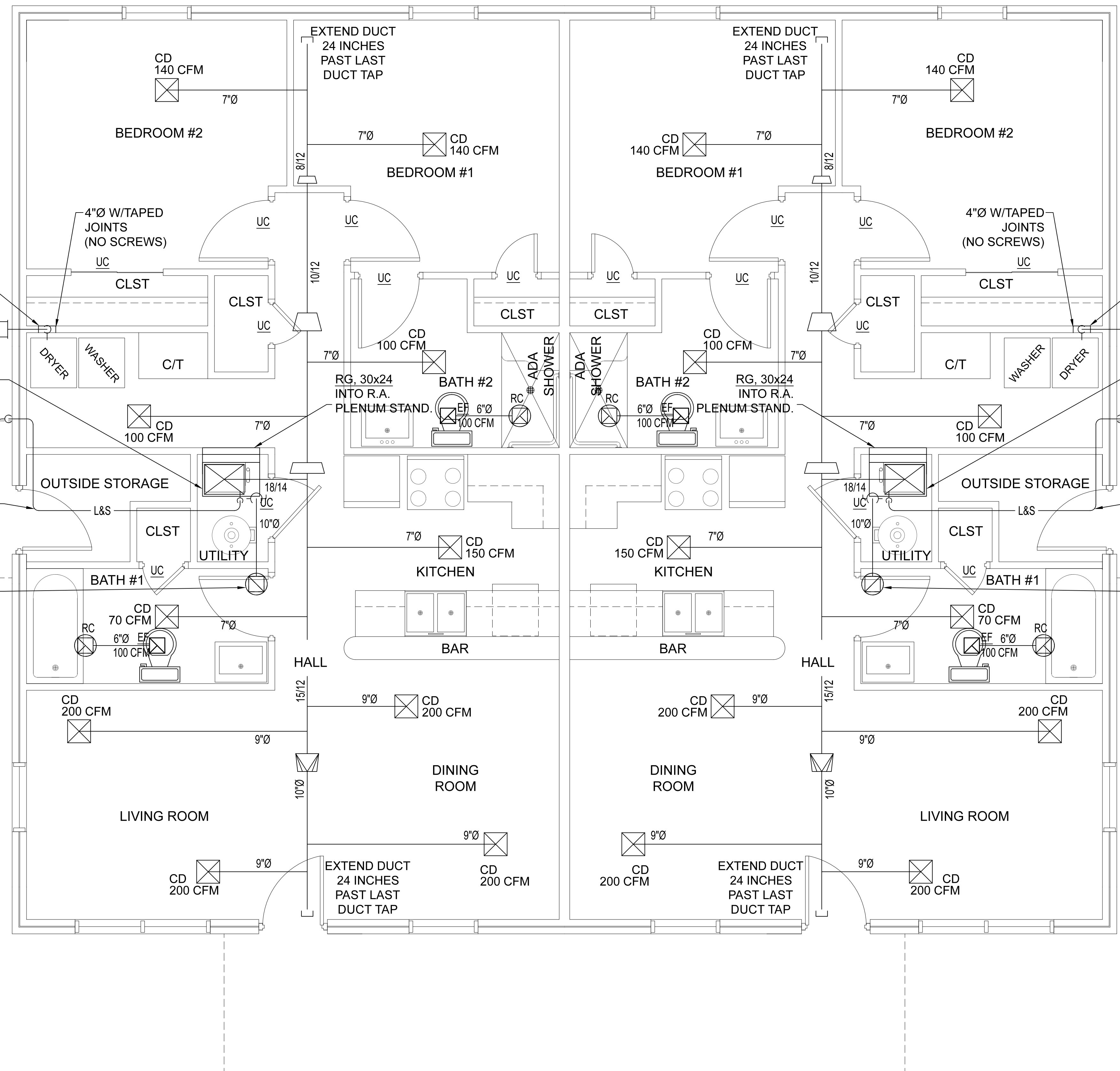
Housing Authority of the
 Cherokee Nation

2 Bedroom Duplex Birdtail Complex
 Truss Framing

DESIGNED BY:	APPROVED BY:
DRAWN BY:	DATE PREPARED:
MDD	March 2022

NO.	REVISION	DATE	BY
0	REVISED UTILITY CLOSET, OUTSIDE STORAGE, AND WASHER AND DRYER AREA	6/17/22	MDD

A107
 SHEET NO.



NOTE #1
OPTIONAL DRYER
EXHAUST DUCT IN WALL
BOX WITH BOTTOM OF
BOX AT FLOOR LEVEL.

PROVIDE DRYER EXHAUST WALL
CAP WITH BACKDRAFT DAMPER.

FURNACE-MINIMUM 66,000 BTUH INPUT
FAN COIL (EH)-MINIMUM 15kw, 2 STAGE
FAN COIL (HT P)-MINIMUM 10kw, 2 STAGE

CONDENSING UNIT (HEAT PUMP)
ROUTE REFRIGERANT PIPING
UP TO ATTIC SPACE. (42,000
BTUH)
3-1/2 TON

AIR DEVICES - HART & COOLEY OR EQUAL
CEILING DIFFUSERS TYPE 500
6x6 75 CFM OR LESS
8x8 75-120 CFM
10x10 120-175 CFM
12x12 175-300 CFM

SIDEWALL FURNACE (FAN COIL) RETURN GRILLE
TYPE 672
30x12 800 CFM (2T)
30x18 1200 CFM (3T)
30x24 1600 CFM (4T)

NOTE:
1. VERIFY HEAT SOURCE WITH CONSTRUCTOR.
(GAS, ELECTRIC RESISTANCE, OR AIR TO AIR HEAT
PUMP)

2. HEAT PUMP FAN COIL UNITS TO BE PROVIDED
WITH SUPPLEMENTAL ELECTRIC HEATER. (SIZED
TO PROVIDE SUPPLY AIR TEMPERATURE ABOVE
95°F WITH HEAT PUMP OPERATION AT 0°F OUTSIDE
AIR TEMPERATURE.)

3. PROVIDE FLUE AND COMBUSTION AIR DUCTING
FOR GAS FIRED FURNACE.

UC = UNDERCUT DOOR

NOTE #1
OPTIONAL DRYER
EXHAUST DUCT IN WALL
BOX WITH BOTTOM OF
BOX AT FLOOR LEVEL.

PROVIDE DRYER EXHAUST WALL
CAP WITH BACKDRAFT DAMPER.

FURNACE-MINIMUM 66,000 BTUH INPUT
FAN COIL (EH)-MINIMUM 15kw, 2 STAGE
FAN COIL (HT P)-MINIMUM 10kw, 2 STAGE

CONDENSING UNIT (HEAT PUMP)
ROUTE REFRIGERANT PIPING
UP TO ATTIC SPACE. (42,000
BTUH)
3-1/2 TON

AIR DEVICES - HART & COOLEY OR EQUAL
CEILING DIFFUSERS TYPE 500
6x6 75 CFM OR LESS
8x8 75-120 CFM
10x10 120-175 CFM
12x12 175-300 CFM

SIDEWALL FURNACE (FAN COIL) RETURN GRILLE
TYPE 672
30x12 800 CFM (2T)
30x18 1200 CFM (3T)
30x24 1600 CFM (4T)

NOTE:
1. VERIFY HEAT SOURCE WITH CONSTRUCTOR.
(GAS, ELECTRIC RESISTANCE, OR AIR TO AIR HEAT
PUMP)

2. HEAT PUMP FAN COIL UNITS TO BE PROVIDED
WITH SUPPLEMENTAL ELECTRIC HEATER. (SIZED
TO PROVIDE SUPPLY AIR TEMPERATURE ABOVE
95°F WITH HEAT PUMP OPERATION AT 0°F OUTSIDE
AIR TEMPERATURE.)

3. PROVIDE FLUE AND COMBUSTION AIR DUCTING
FOR GAS FIRED FURNACE.

UC = UNDERCUT DOOR

ENGINEER
KAS Gales Company
Consulting Engineers
18772 Harmon Road
Fayetteville, AR 72704
WK: 479.361.9977 Cell: 479.422.0763
Email: carid.gales@gmail.com



Housing Authority of the
Cherokee Nation

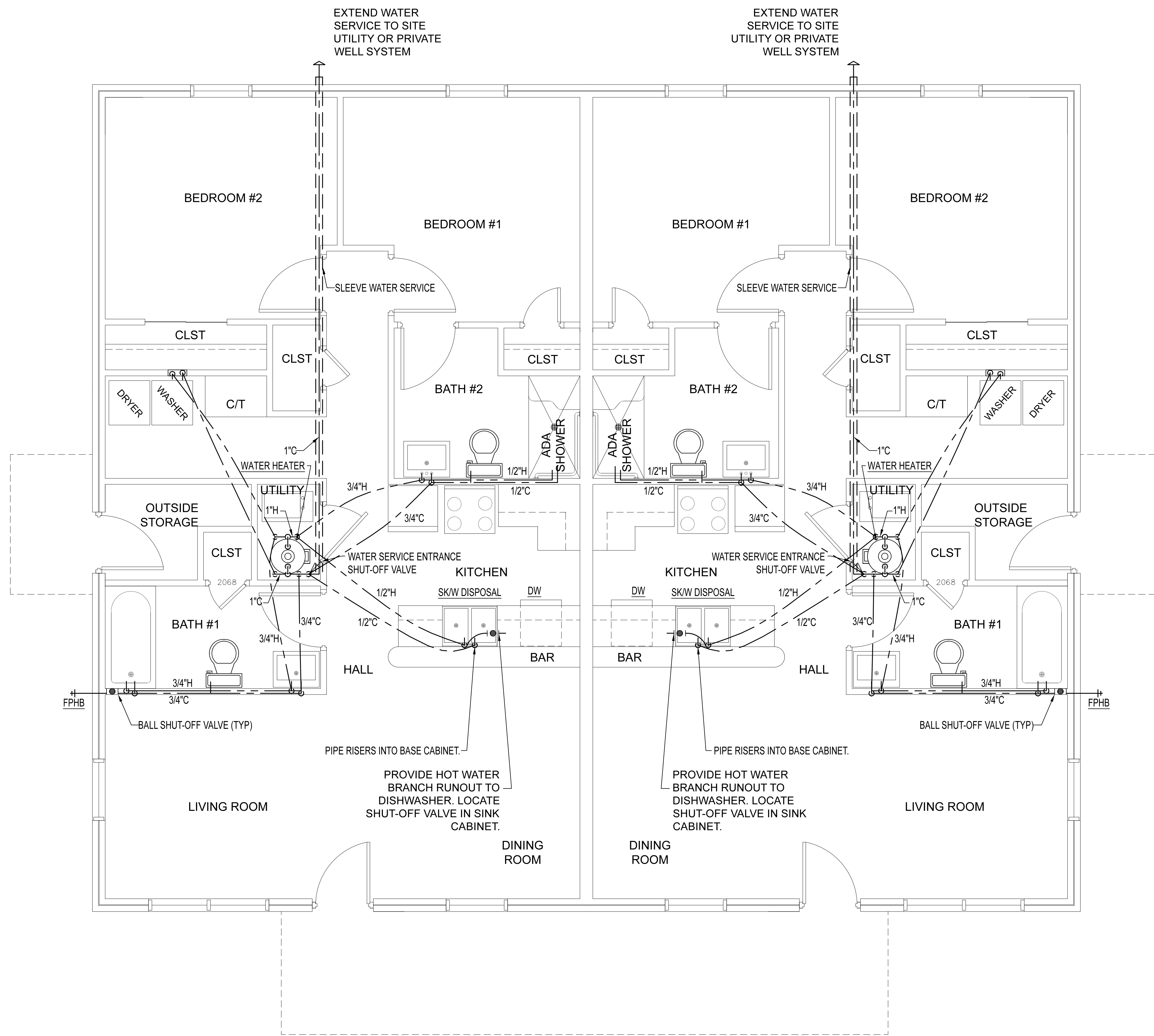
2 Bedroom Duplex Birdtail Complex
HVAC

DESIGNED BY:	APPROVED BY:
DRAWN BY:	DATE PREPARED:
MD	March, 2022

NO.	REVISION	DATE	BY
0	REVISED UTILITY CLOSET, OUTSIDE STORAGE, AND WASHER AND DRYER AREA	6/17/22	MD

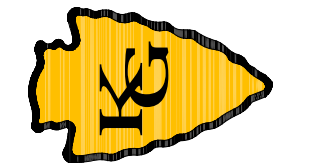
M101
SHEET NO.

SCALE
3/8" = 1'



SCALE
3/8" = 1'

ENGINEER
KAS Gales Company
Consulting Engineers
18772 Harmon Road
Fayetteville, AR 72704
WK. 479.361.9977 Cell 479.422.0763
Email: carl.d.gales@gmail.com



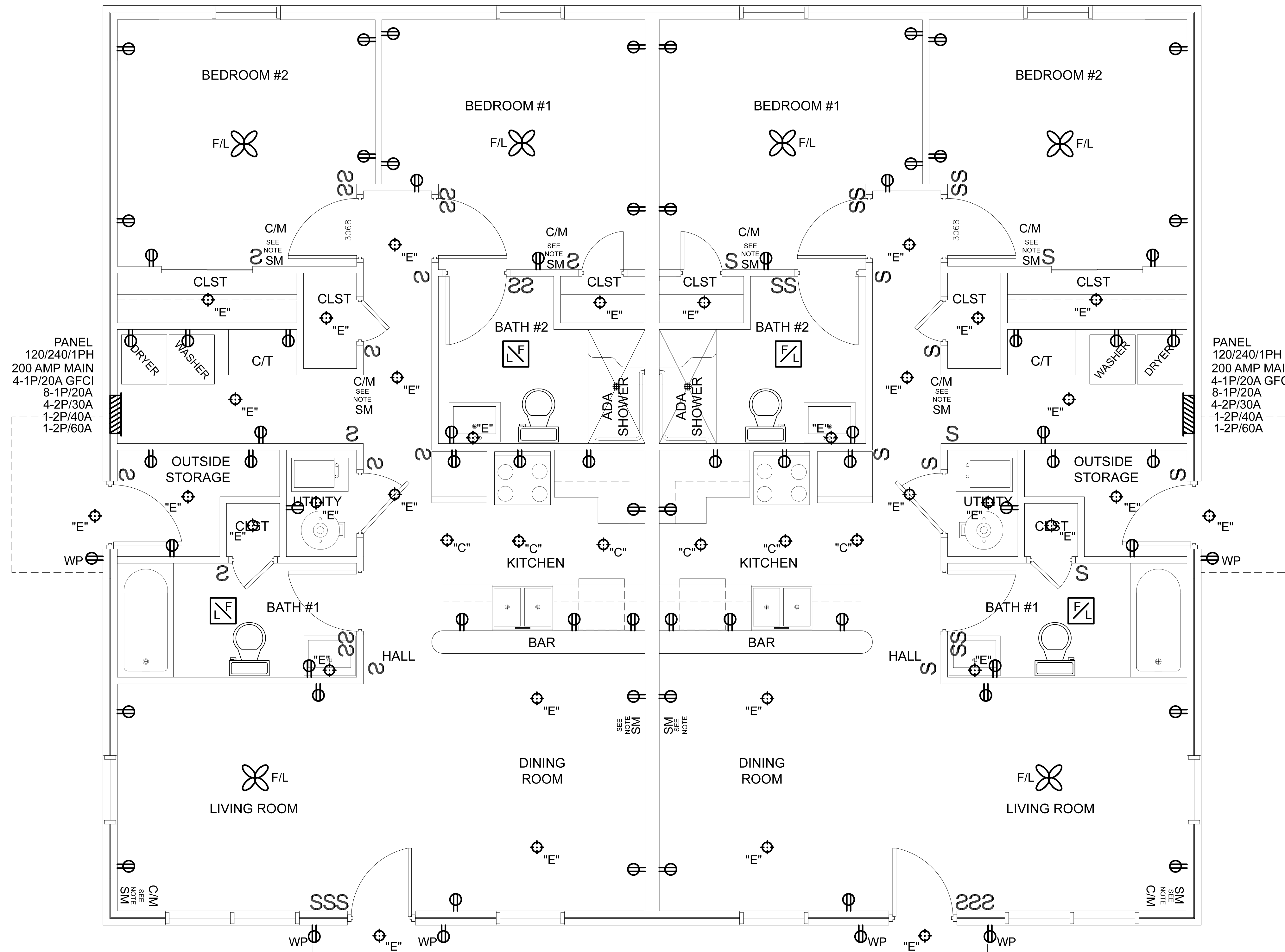
Housing Authority of the
Cherokee Nation
2 Bedroom Duplex Birdtail Complex
Domestic Water Plan

DESIGNED BY: MDD
DRAWN BY: MDD

APPROVED BY: CDG
DATE PREPARED: March 2022

NO.	REVISION	DATE	BY
0	REVISED UTILITY CLOSET, OUTSIDE STORAGE, AND WASHER AND DRYER AREA	6/17/22	MDD

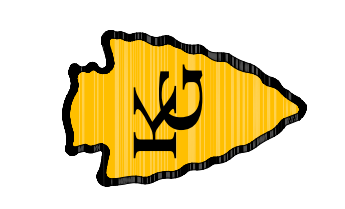
P102
SHEET NO.



NOTE:
SMOKE DETECTORS TO
BE INSTALLED ON THE
WALL 12 INCHES FROM
CEILING PER NFPA

SCALE
3/8" = 1'

ENGINEER
KAS Gales Company
Consulting Engineers
18772 Harmon Road
Fayetteville, AR 72704
WK. 479.361.9977 Cell 479.422.0763
Email: carl.d.gales@gmail.com



Housing Authority of the Cherokee Nation		2 Bedroom Duplex Birdtail Complex		ELECTRICAL PLAN	
DESIGNED BY:	MDD	APPROVED BY:	CDC	DATE PREPARED:	March, 2022
DRAWN BY:	MDD	DATE:		BY:	
NO.	0	REVISION	REVISED UTILITY CLOSET, OUTSIDE STORAGE, AND WASHER AND DRYER AREA	DATE	
E101		SHEET NO.			