

CHEROKEE NATION
REQUEST FOR INFORMATION
Commercial Carriers



Purchasing Department
On behalf of the
Cherokee Nation Government Relations

CHEROKEE NATION
P.O. Box 948
Tahlequah, OK 74465
(918) 453-5000

REQUEST FOR INFORMATION

Commercial Carriers

Introduction

The Cherokee Nation is the federally recognized government of the Cherokee people and thereby has sovereign status granted by treaty and law. Tribal sovereignty is the right to self-governance. The seat of tribal government is the W.W. Keeler Complex near Tahlequah, Oklahoma, capital of the Cherokee Nation. The jurisdictional area of the Cherokee Nation (hereinafter "Nation") covers 14 counties.

The Nation is currently in the process of building fifteen (15) communication towers at various sites throughout the reservation. At this time, the Cherokee Nation is requesting information from commercial carriers who are interested in placing equipment and providing carrier service on these towers.

The Nation is requesting information at this time to determine interest to help in project planning. Any submittals provided to the Nation will be treated as proprietary and confidential. The Nation will accept submittals from Indian and non-Indian owned. To be recognized as Indian-owned a company must be certified through the Cherokee Nation Tribal Rights Office (TERO). Information submittals should be emailed to Shelly McClain, Director of Procurement, at shelly-mcclain@cherokee.org no later than **September 25, 2024 by 5:00 pm CT. The submittal must state in the email subject line: RFI Commercial Carriers.**

Summary

The Cherokee Nation is currently engaged in an extensive Broadband project focused on promoting economic development and digital inclusion for its citizens and communities in Northeastern Oklahoma.

The scope of the wireless project will include the construction of fifteen 195' lattice towers on tribal lands, located near community centers. These towers are being built as part of a broader initiative that will also provide access to fixed wireless services to the citizens and communities within the Cherokee Nation.

There is also an opportunity for Local and National carriers who may have an interest in collocating on these structures, to enhance or provide cellular coverage to those residents who may not currently have access to mobile services and resources.

This request for information has been prepared to provide an overview of the project, identification of infrastructure available at each tower location, and the coordinates for each tower to assist carriers/providers with the basic information to determine the benefits of collocation.

Towers

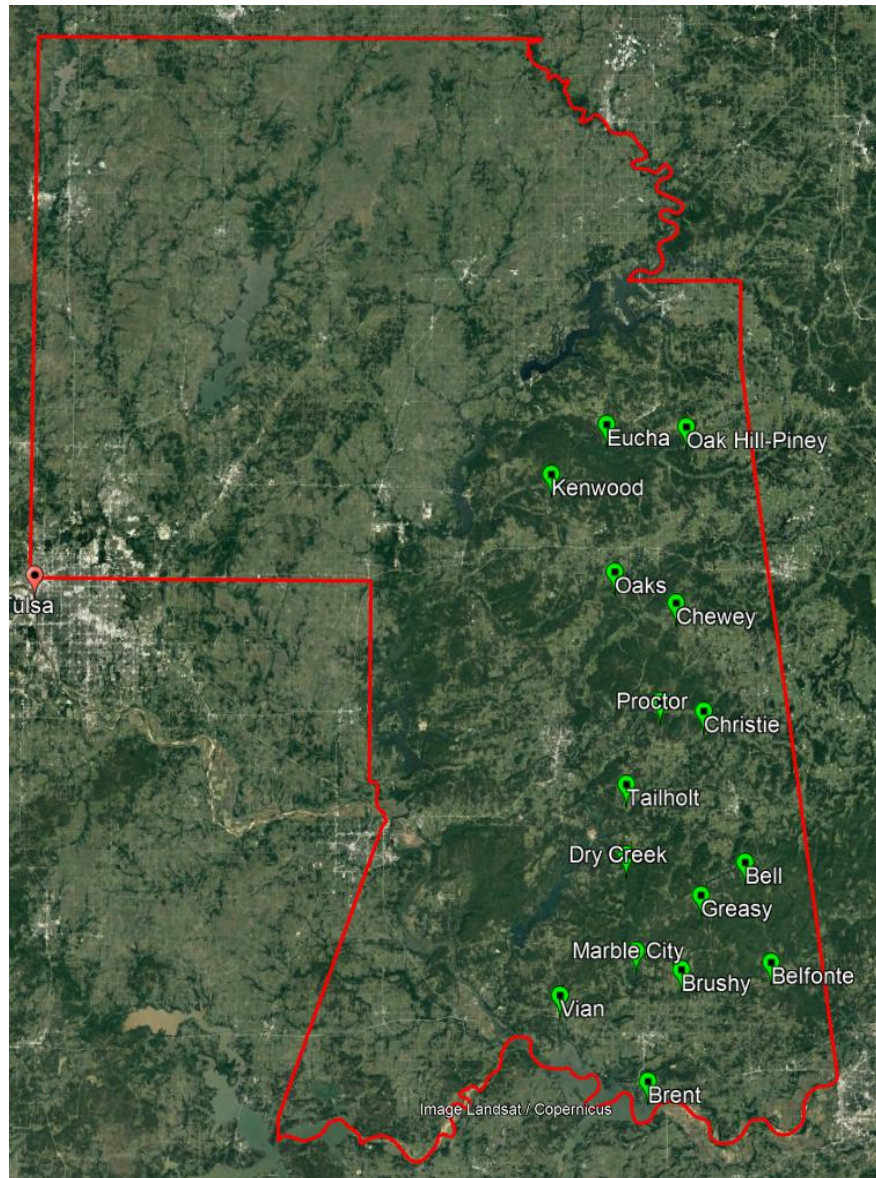
All tower sites will have supporting infrastructure available to provide a turn-key solution for Carriers to stage equipment, connect to utilities, and install backhaul. Shelters will be included at each tower site. Rack space will be available for carrier equipment as needed. Access roads will be constructed to allow ingress/egress to the tower sites.

Cherokee Nation will provide:

- 195 Ft Lattice Towers
- Electric Utility Connections
- Shelter Space (10'x20' Shelters)
- Rack Space
- Bard 3 Ton Wall Mount HVAC
- Generac SD 050 50 KW Generators
- Automatic Transfer Switch
- Fiber Distribution Panel

Tower Locations

Site Name	Coordinates	Height (Ft)
Belfonte	35.561830, -94.560370	195
Bell	35.716920, -94.610890	195
Brent	35.377420, -94.798170	195
Brushy	35.551000, -94.733940	195
Chewey	36.117330, -94.744520	195
Christie	35.950446, -94.690731	195
Dry Creek	35.728633, -94.840737	195
Eucha	36.392450, -94.879680	195
Greasy	35.666340, -94.696170	195
Kenwood	36.316333, -94.99	300
Marble City	35.579881, -94.821371	195
Oak Hill-Piney	36.388710, -94.724340	195
Oaks	36.165020, -94.863660	195
Proctor	35.965343, -94.775305	195
Tailholt	35.837579, -94.840672	195
Vian	35.511230, -94.968080	195



Week	1-5	6-10	11-15	16-20	21-25	26-30	31-35	36-40
GEO								
Foundation								
Tower Fab								
Site Work								
Tower Stack								
Shelter/Gen Set								
Gravel/Fence								

The tower construction will begin in late 2024, with the first tower being completed 16 weeks after construction commences. The remaining towers are scheduled to be completed in 24 weeks.

Wireless Network

The Cherokee Nation will retain ownership of the towers and charge monthly rent for the tower space. The carrier will own and operate the radio network and customer relationships, providing customer service and billing.

The Carrier(s) will be responsible for:

- Using their licensed band(s) for the RAN
- Connecting backhaul for their equipment
- Installing the radio network equipment on towers
- Connecting all the radio network equipment
- Testing the network
- Maintaining the network equipment
- Ongoing warranty on the equipment
- Monthly Utilities
- Monthly Tower Rental Fees
- Operating the network
- Providing customer service to end users.
- Installing CPE equipment when necessary
- Billing and collection of monthly fees for customer usage
- Marketing and advertising to subscribers

Below is a table showing the number of citizens and households within 5 miles of each tower. This data is approximate and changes over time. The Cherokee Reservation is home to an estimated 141,000 citizens.

Site	Citizens	Households
Belfonte-Nicut	756	325
Bell	278	139
Brent	526	289
Brushy	700	363
Chewey	217	104
Christie	168	87

Dry Creek	794	390
Eucha	1271	602
Greasy	695	339
Kenwood		
Marble City	644	339
Oak Hill-Piney	1752	944
Oaks	1718	820
Proctor	479	235
Tailholt	850	420
Vian	947	503

Information Submittal

Please provide the following information.

- Specifications and requirements
 - What are the technical specifications of the equipment you would locate?
 - What are the structural load-bearing requirements of your equipment?
 - What are the weights and dimensions of the equipment that might be mounted?
 - What electrical load will your equipment require?
 - What vertical tower space would your equipment require?
 - How much rack space do you require in the shelter?
- What are your typical lease terms for tower sites?
 - General length of leases?
 - Any special terms?
- What are your maintenance procedures
 - What access to sites is required?
 - How often are sites visited?
- What permits or approvals are needed to locate your equipment?
 - Regulatory compliance or permits?
 - Insurance requirements?
- What are the benefits of partnering with your company?
 - Potential benefits?
 - Joint marketing?
- Who is the contact at your company for ongoing discussions and information?