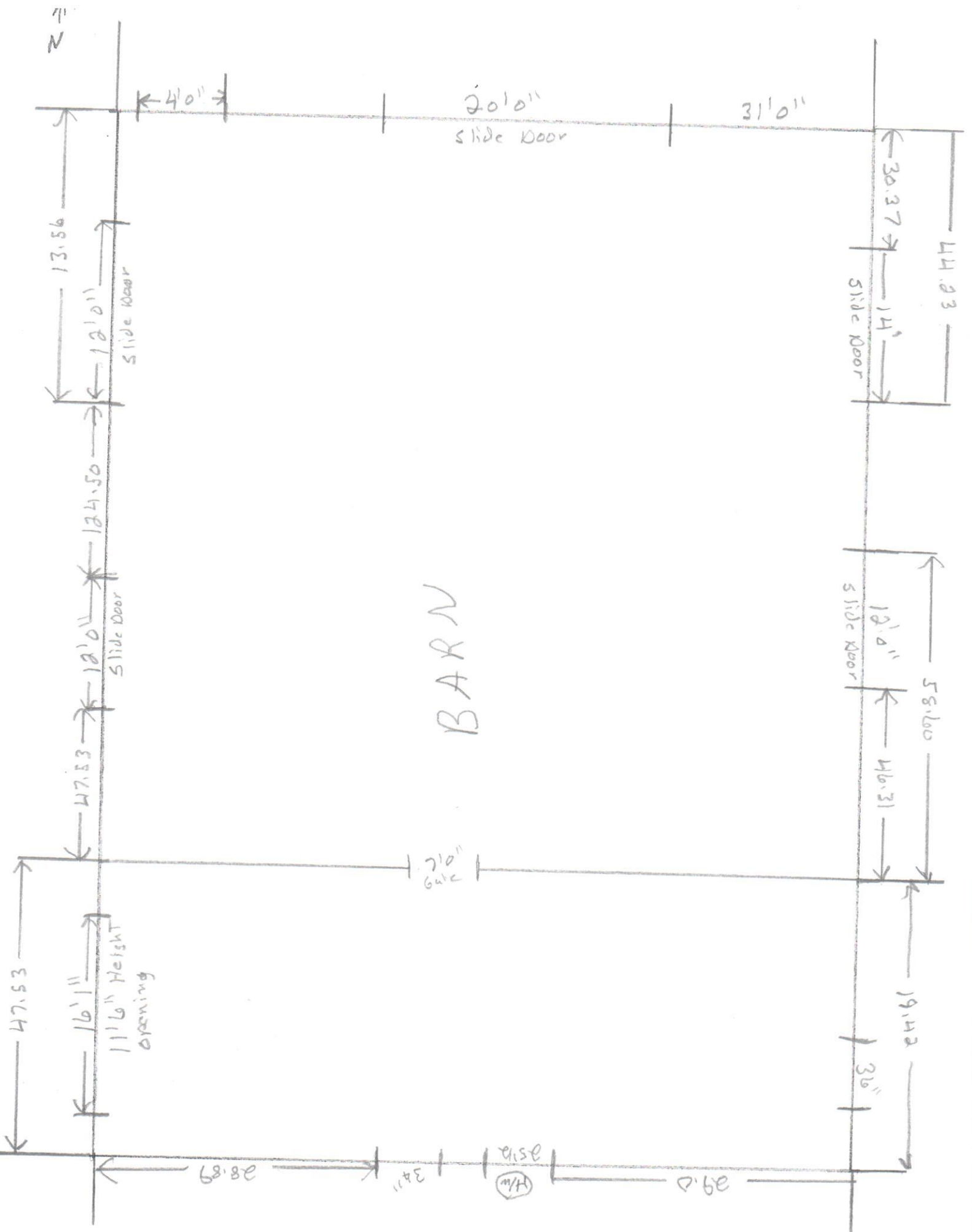


House side



BARN

North

20'0" gate

29'0" (H/W) 34" 28'89"

20'0" slide door

31'0"

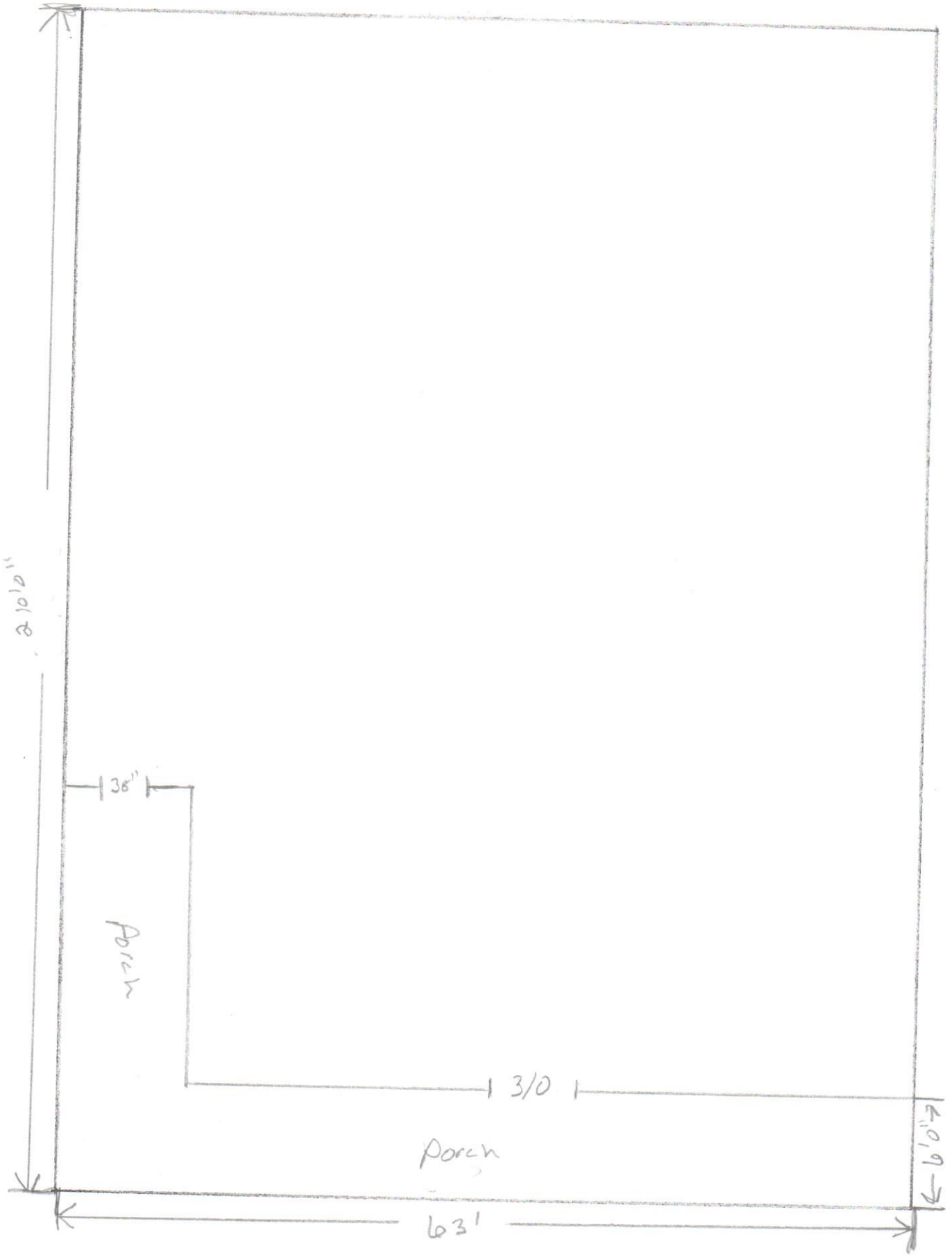
44.93  
30.37  
14'  
slide door

58.60  
19'0"  
slide door  
46.31

19.42  
36"

47.53  
16'11"  
11'6" height opening

13.56  
12'0"  
slide door  
124.50  
18'0"  
slide door  
18'0"  
slide door  
17.53



210'8"

38"

Porch

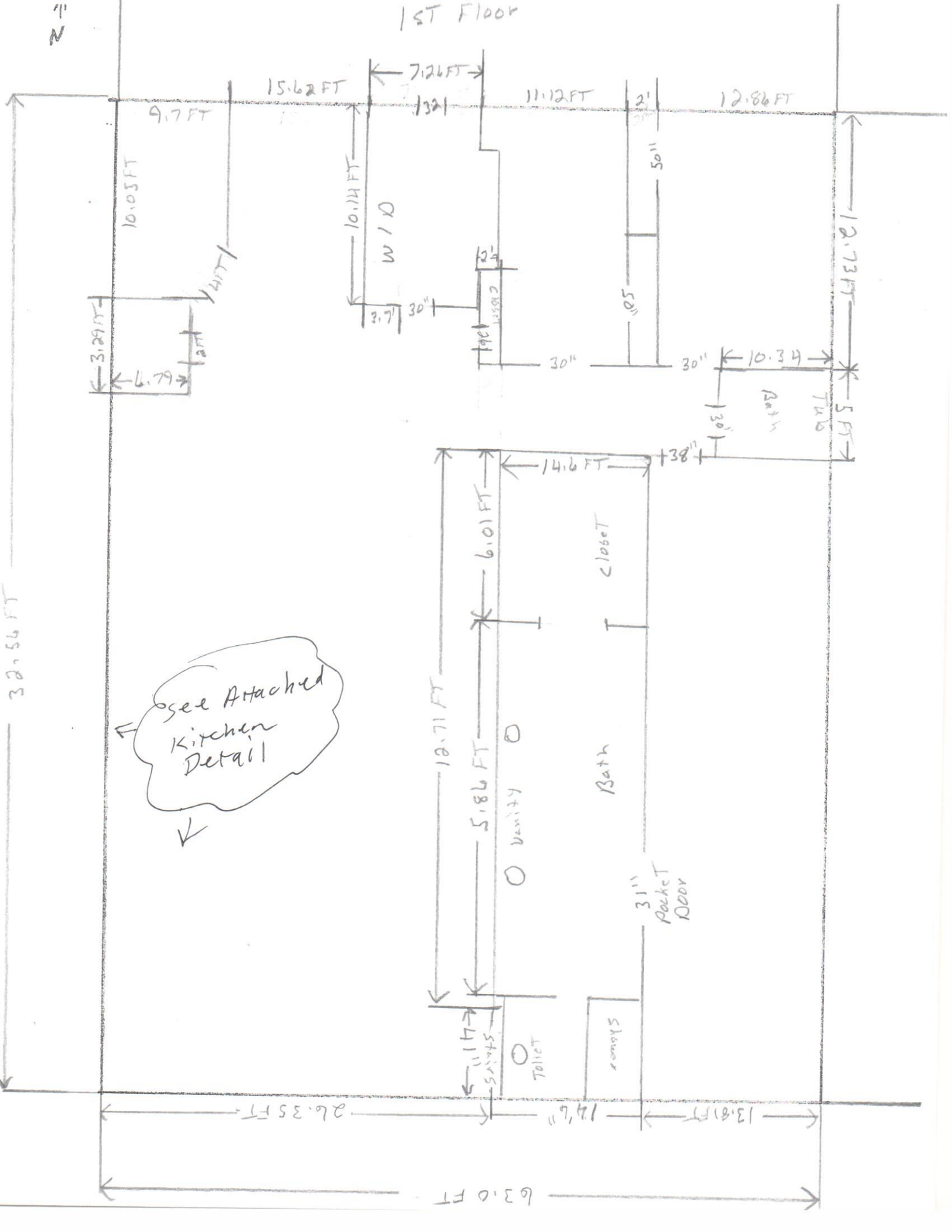
31'0"

Porch

63'

10'9"

1ST Floor



See Attached  
Kitchen  
Detail

N ↑

32.56 FT

63.0 FT

26.35 FT

9.7 FT

10.05 FT

15.62 FT

7.26 FT

11.12 FT

12.86 FT

12.73 FT

5 FT

3.29 FT

6.79 FT

10.14 FT

W/D

3.7'

30"

30"

30"

30"

30"

30"

30"

10.34

Bath

7.46

12.71 FT

14.6 FT

38"

6.01 FT

5.86 FT

Vanity

Closet

Bath

31" Pocket Door

11.17

5.17

Toilet

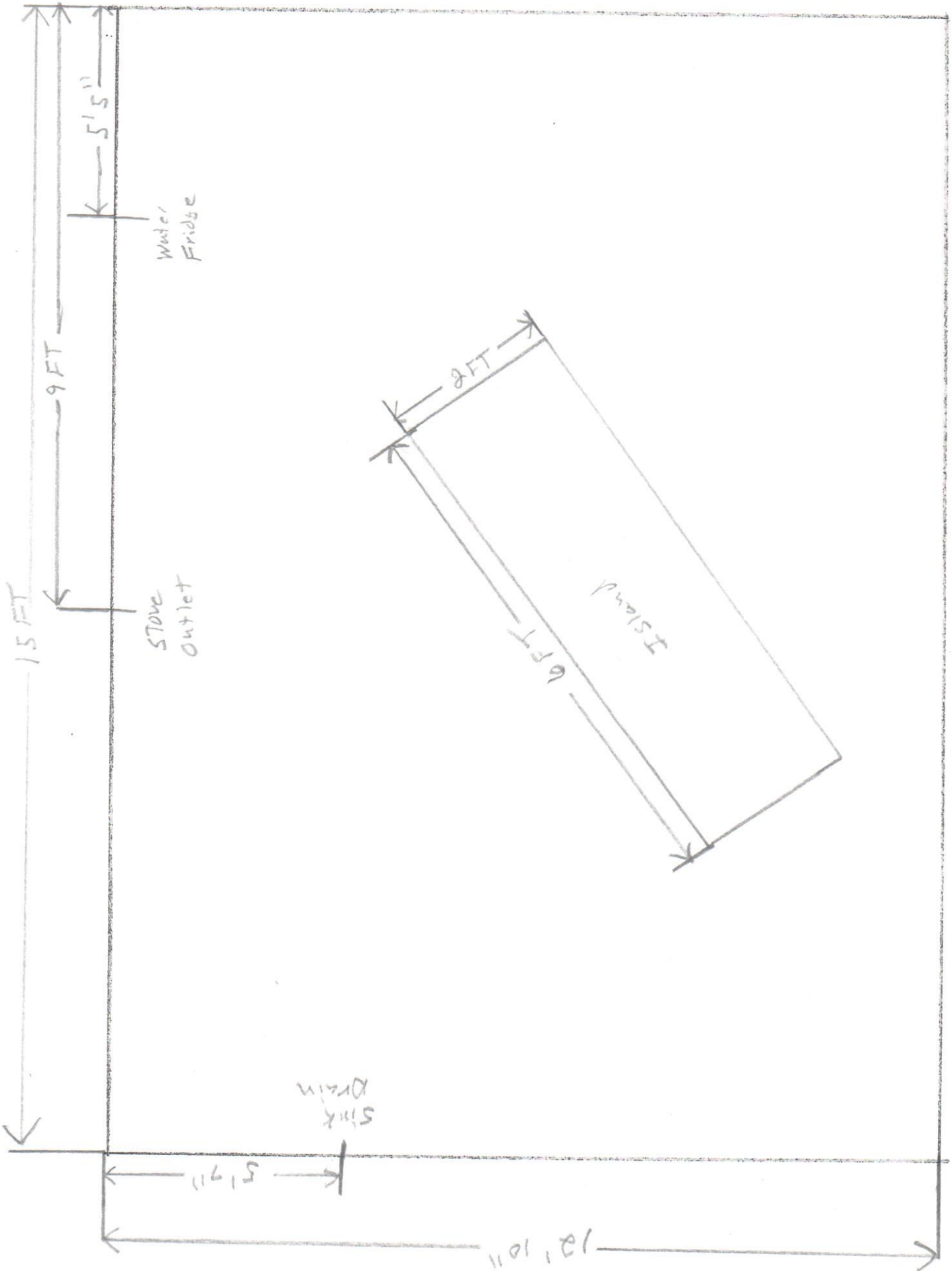
Shower

14.6"

13.81 FT

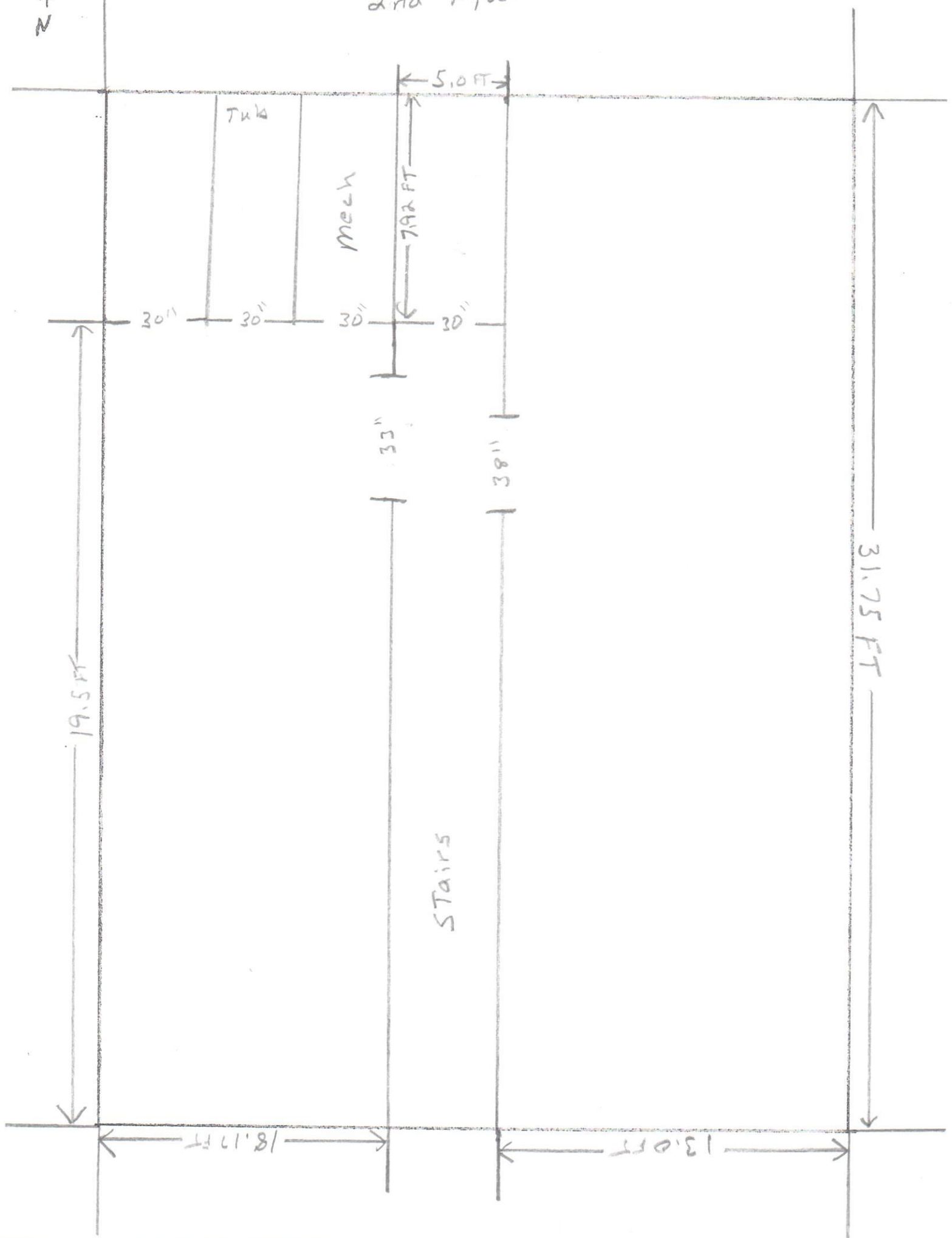
2

# Kitchen



2nd Floor

211



19.5 FT

30"

30"

30"

30"

33"

38"

STAIRS

Tub

Mech

7.92 FT

5.0 FT

8.17 FT

13.0 FT

31.75 FT