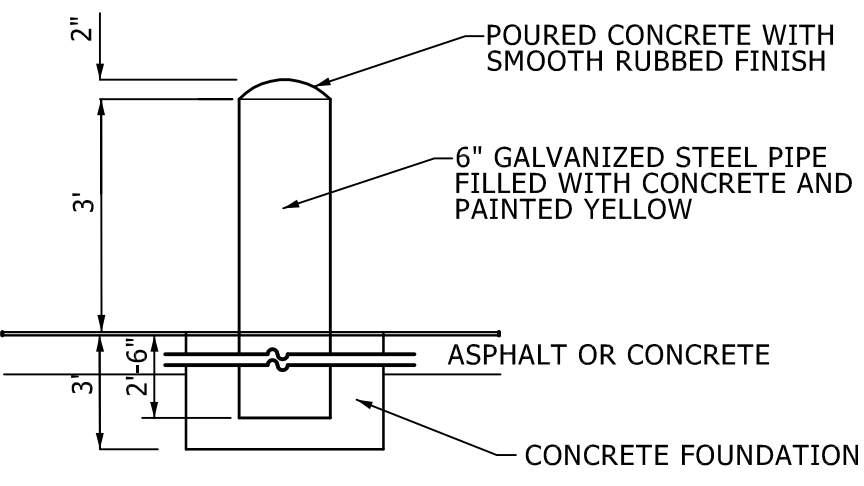
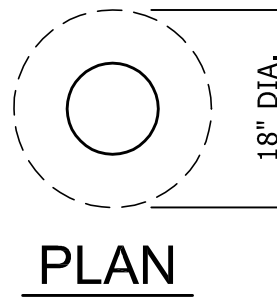


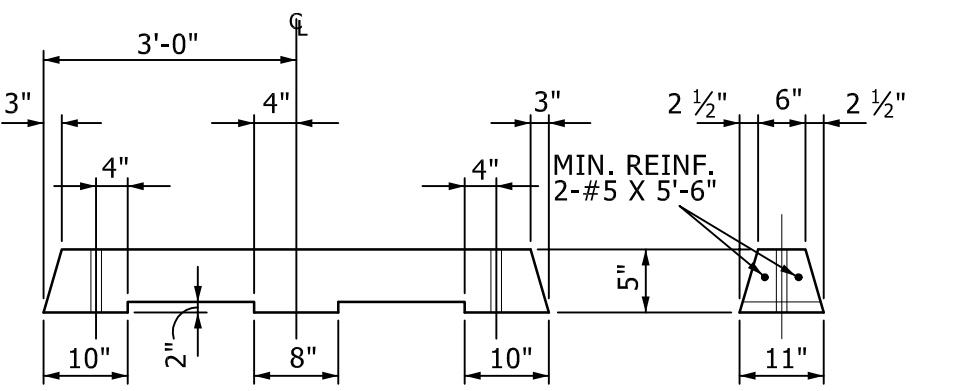
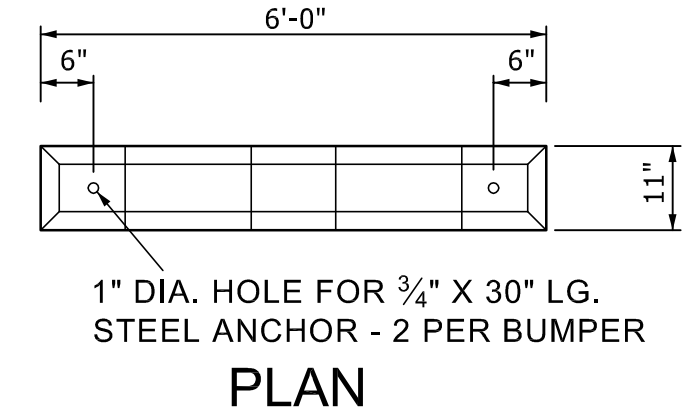
EXHIBIT 'A'



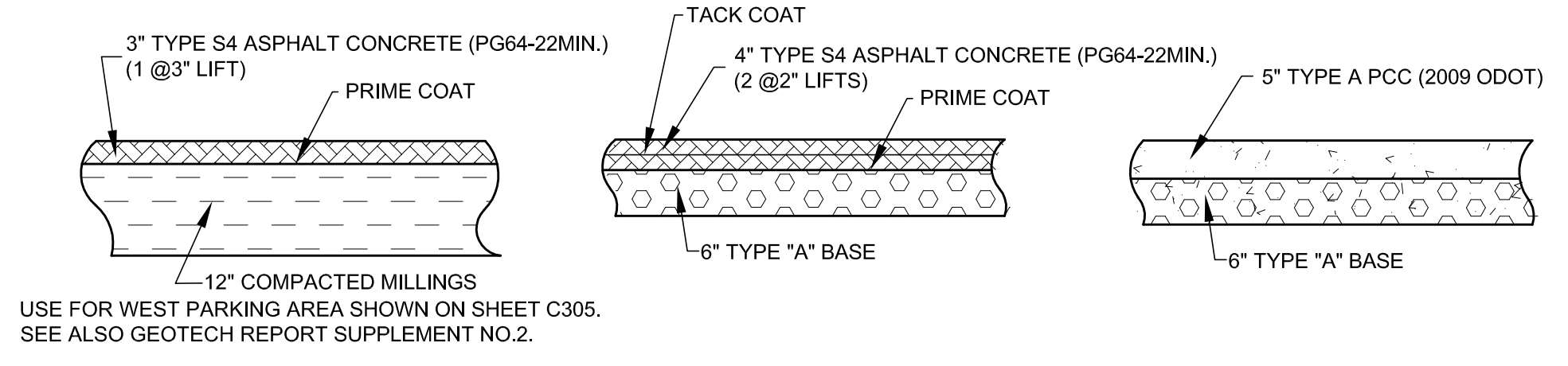
LOCATIONS OF UNDERGROUND UTILITIES WERE OBTAINED FROM THE UTILITY OWNERS. BEFORE DOING ANY WORK WITH HEAVY EQUIPMENT, THE CONTRACTOR SHALL NOTIFY THE UTILITY OWNERS OR "CALL OKIE" (OKLAHOMA "ONE-CALL") NOT LESS THAN 48 HOURS IN ADVANCE AND SHALL ESTABLISH THE EXACT LOCATION AND DEPTH OF ALL UNDERGROUND UTILITIES.



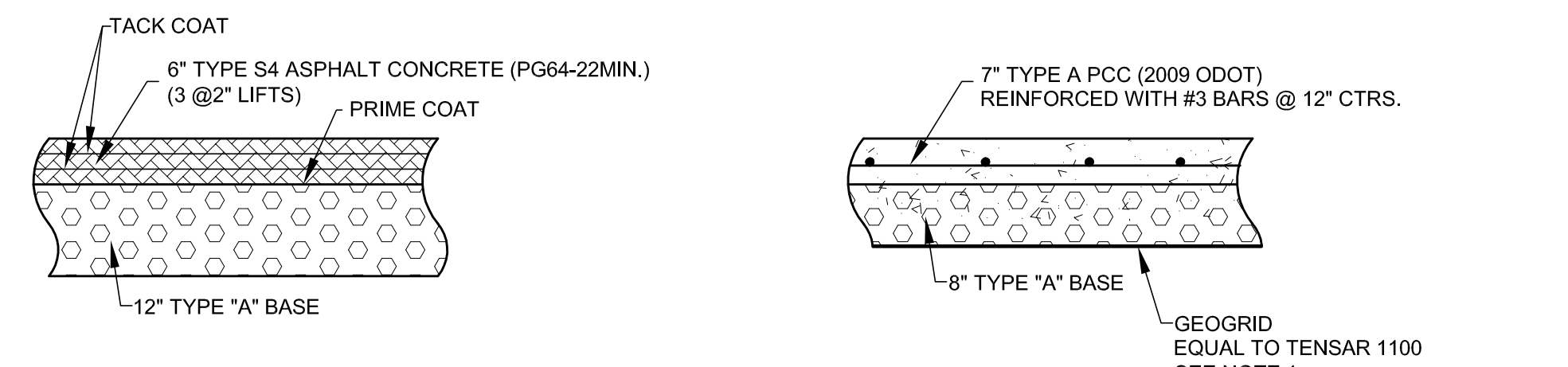
CONCRETE BOLLARD
NO SCALE
SEE SHEET C307 FOR LOCATIONS



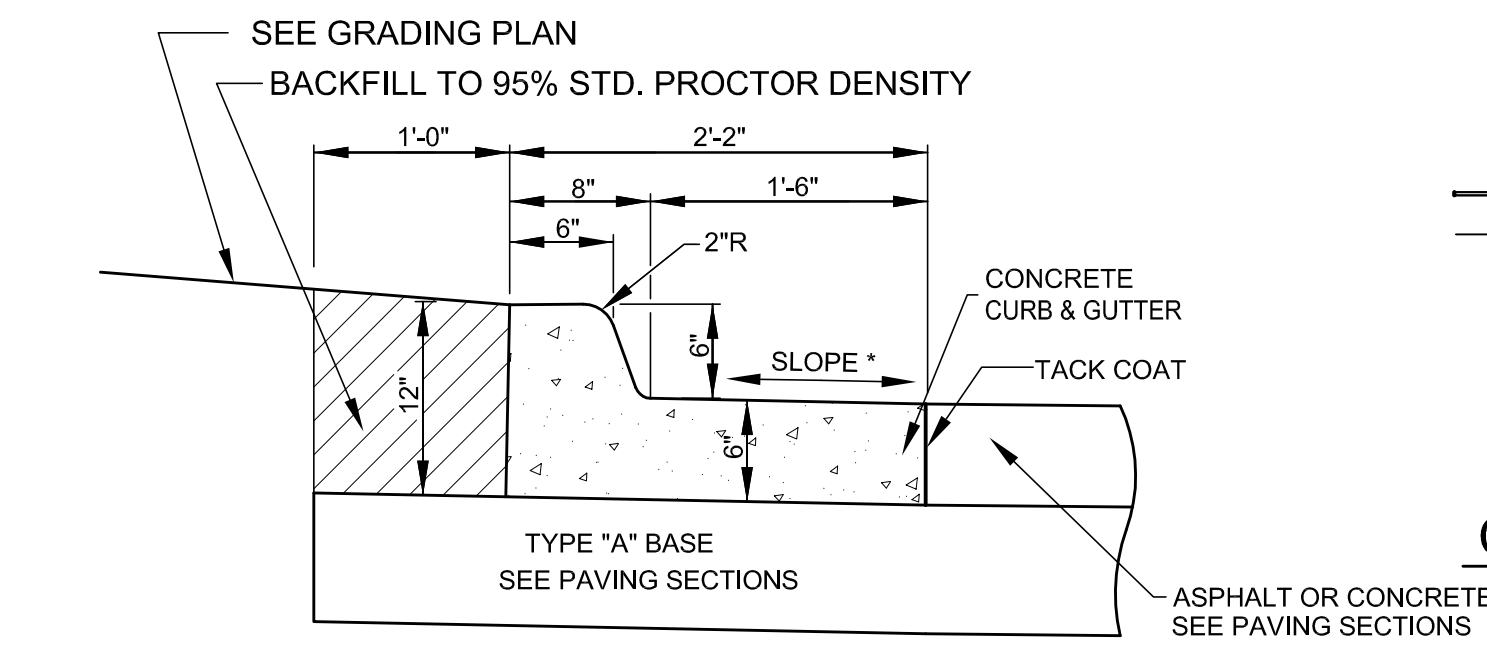
PRECAST CONCRETE WHEEL STOP
NO SCALE
SECTION, ELEVATION, PLAN
CONTRACTOR SHALL SEND SUBMITAL TO OWNER FOR APPROVAL.



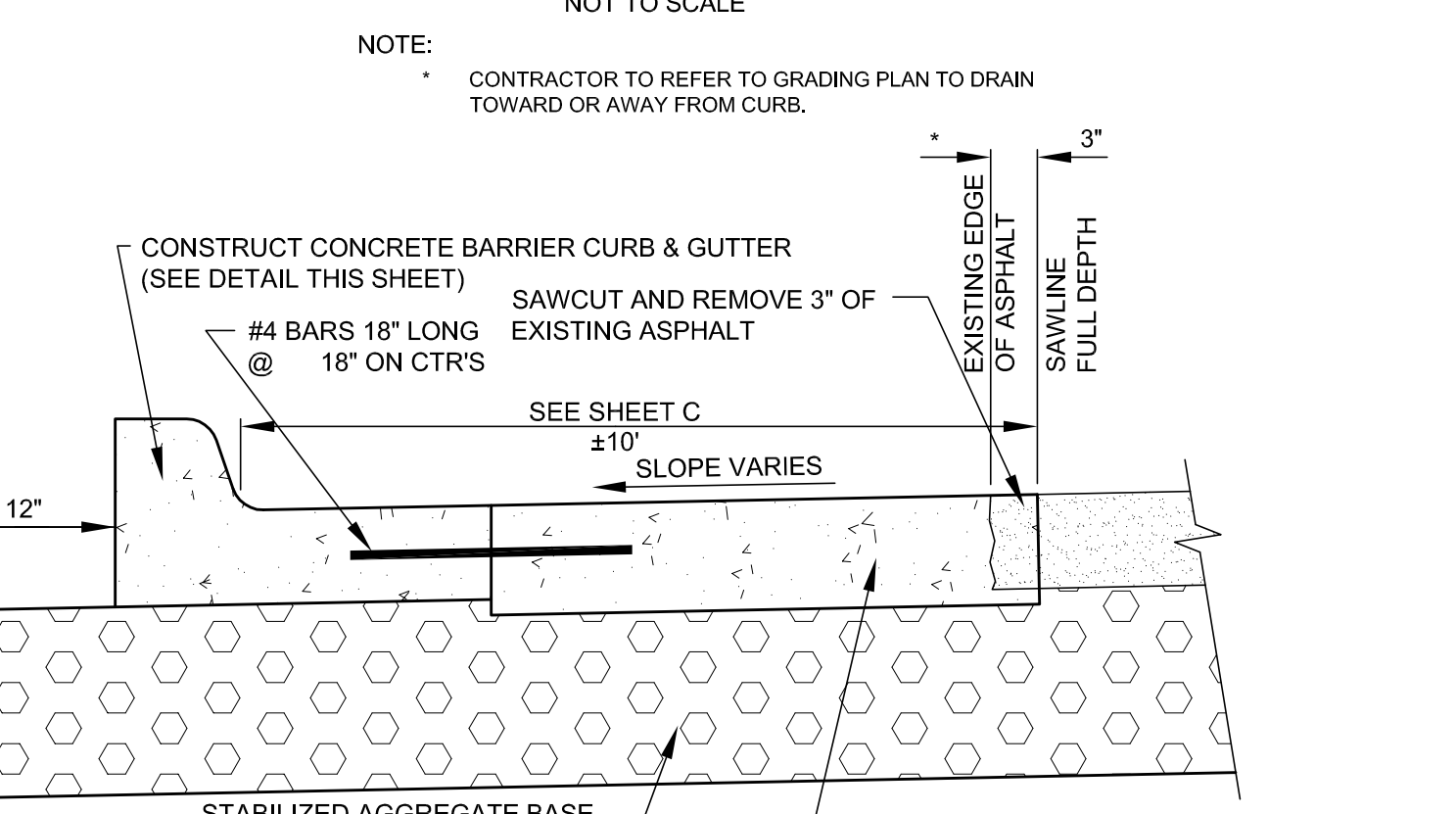
TYPICAL SECTIONS (LIGHT DUTY)
SCALE: 1" = 2"



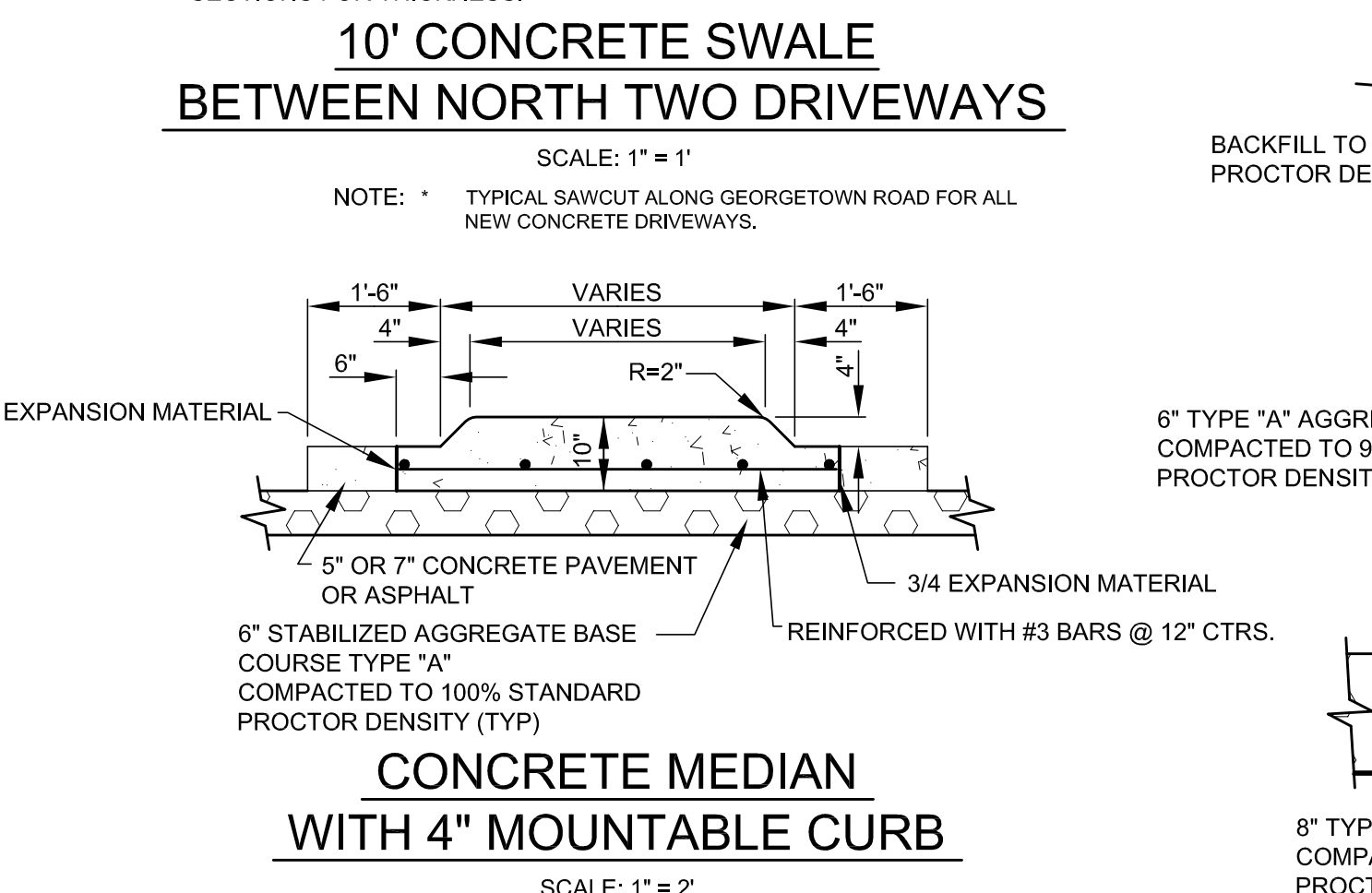
TYPICAL SECTIONS (HEAVY DUTY)
SCALE: 1" = 2"
1. NOTE 1. GEOGRID TO EXTEND MINIMUM 3' OUTSIDE EDGES AND / OR 12' BEHIND NEW CURB. FOR REINFORCING SEE AMENDED GEOTECH REPORT DATED SEPTEMBER 8, 2011.
2. FOR ALL PAVING SECTIONS SEE GEOTECH REPORT BY SCOTT AND ASSOCIATES PROJECT NO. 11538 DATED APRIL 5, 2011 AND SUPPLEMENTS DATED JULY 12, 2011 AND OCTOBER 6, 2011.



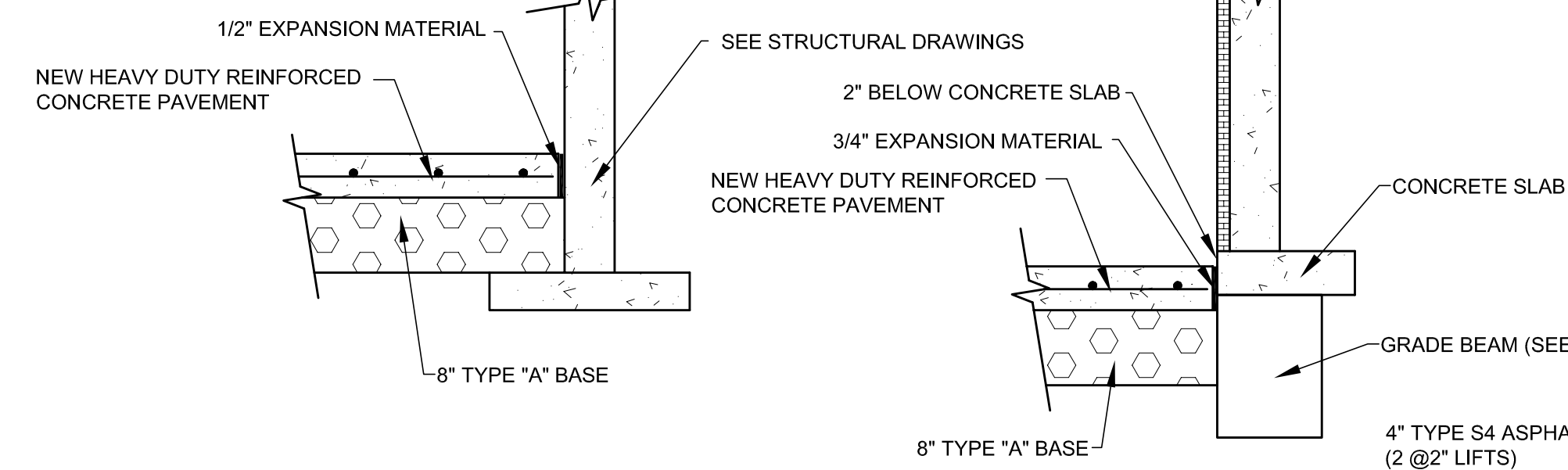
TYPICAL BARRIER CURB AND GUTTER SECTIONS
NOT TO SCALE



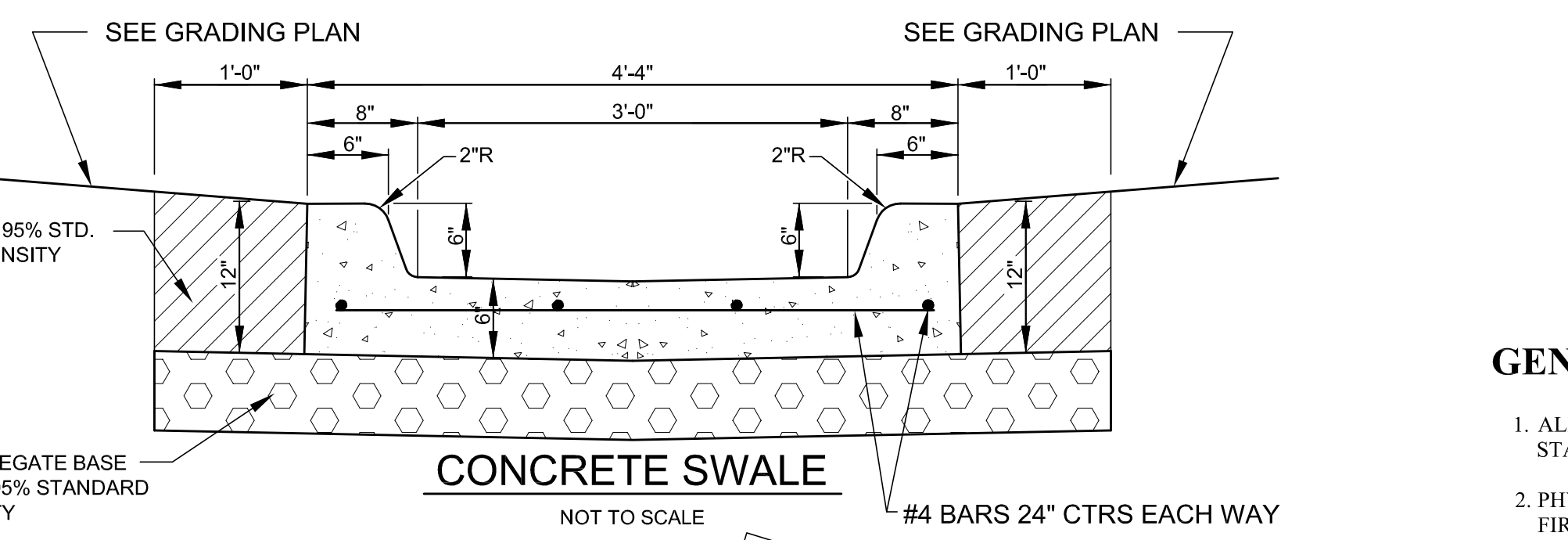
10' CONCRETE SWALE BETWEEN NORTH TWO DRIVEWAYS
SCALE: 1" = 1'
NOTE: TYPICAL SAWCUT ALONG GEORGETOWN ROAD FOR ALL NEW CONCRETE DRIVEWAYS.



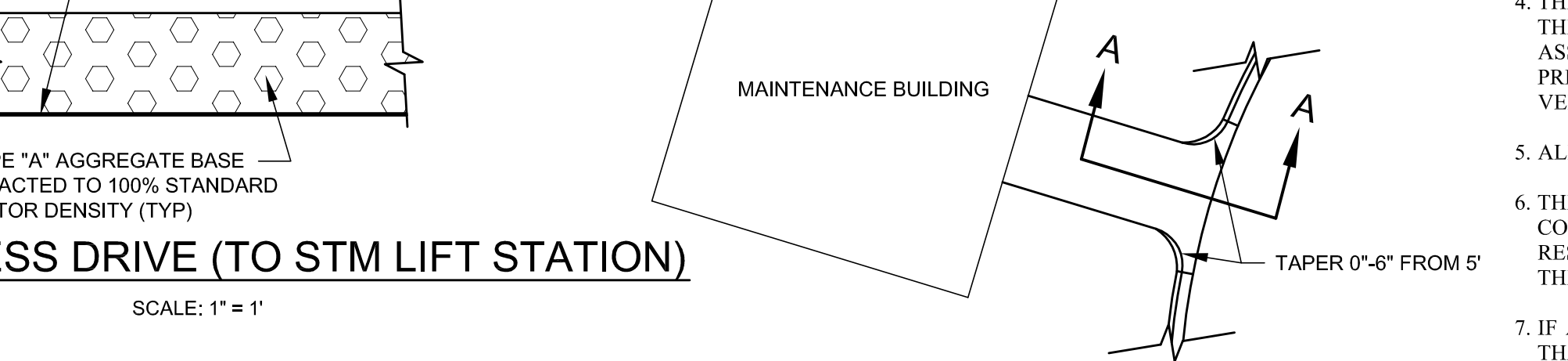
CONCRETE MEDIAN WITH 4" MOUNTABLE CURB
SCALE: 1" = 2"



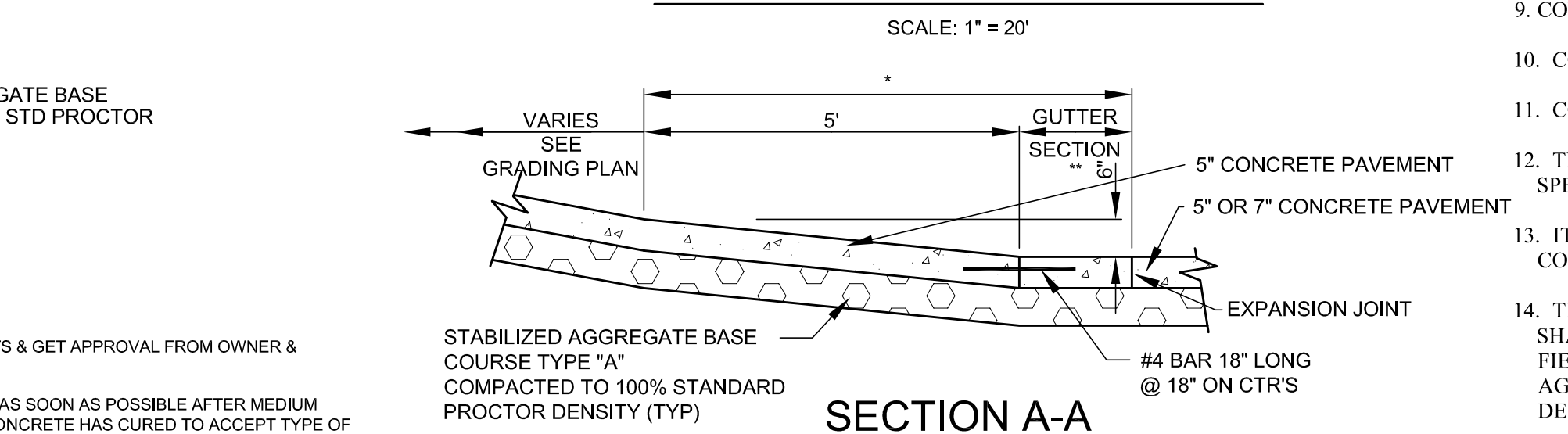
CONCRETE PAVEMENT NEXT TO LOADING DOCK
SCALE: 1" = 2"
CONCRETE PAVEMENT NEXT TO CASINO (NORTH SIDE)
SCALE: 1" = 2"



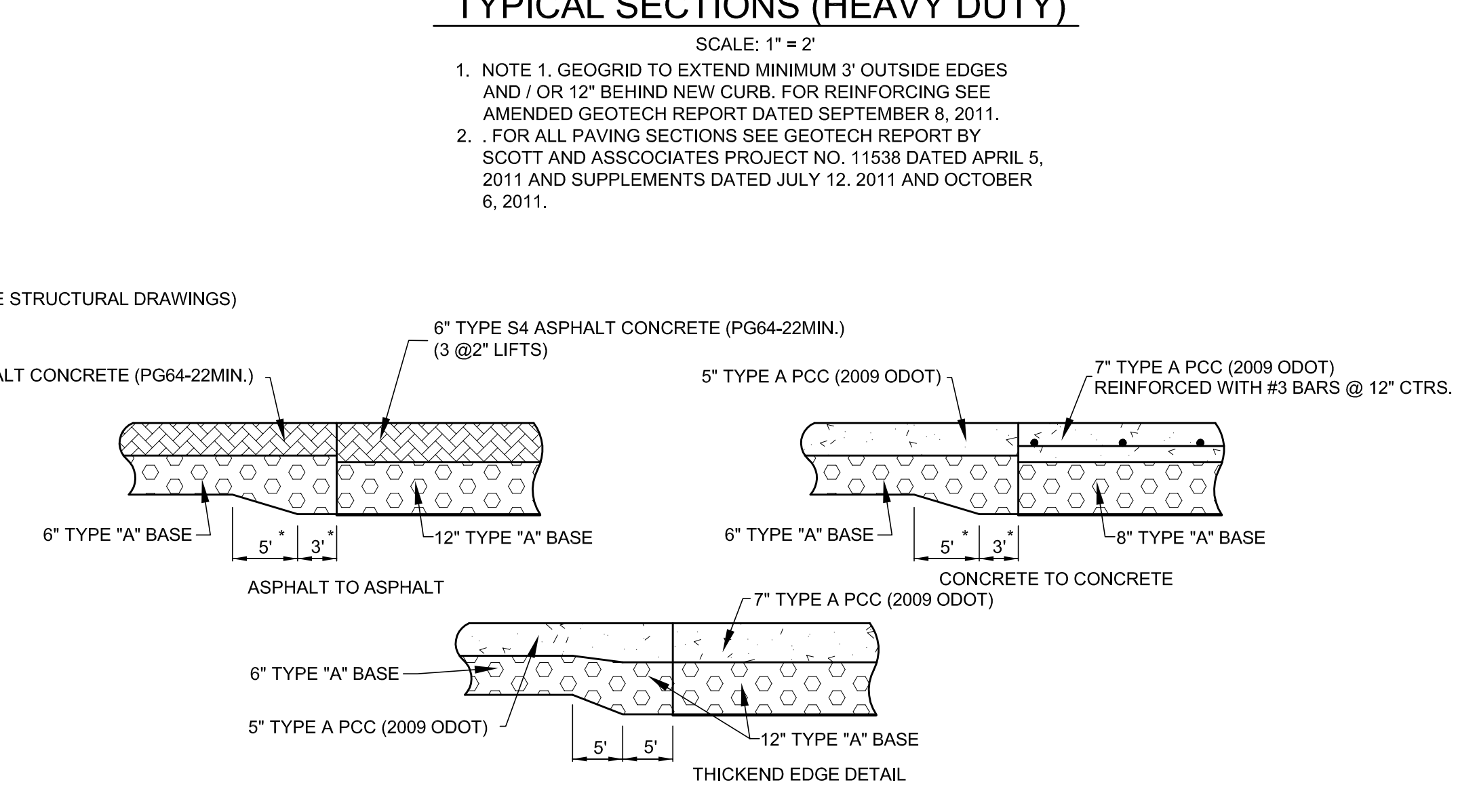
CONCRETE SWALE
NOT TO SCALE



GRAVEL ACCESS DRIVE (TO STM LIFT STATION)
SCALE: 1" = 1'



CONCRETE DRIVE TO MAINTENANCE BUILDING
SCALE: 1" = 20"

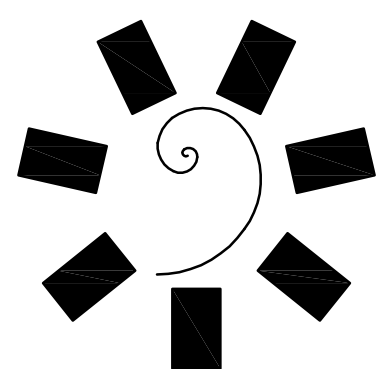


TRANSITION SECTIONS
N.T.S. * DIMENSIONS ARE SAME FOR ASPHALT TO CONCRETE TRANSITIONS

GENERAL NOTES:

- ALL PAVING CONSTRUCTION SHALL BE IN ACCORDANCE WITH THE OKLAHOMA DEPARTMENT OF TRANSPORTATION 2009 STANDARD SPECIFICATIONS & STANDARDS AND GEOTECH REPORTS INCLUDED IN THE BID DOCUMENTS.
- PHYSICAL TESTING FOR QUALITY ASSURANCE AS REQUIRED WILL BE THE RESPONSIBILITY OF CHEROKEE NATION ENTERTAINMENT(OWNER) TESTING FIRM HIRED FOR THIS PROJECT. SOCTT AND ASSOCIATES
- CONTRACTOR SHALL GIVE THE NOTIFICATION CENTER OF THE OKLAHOMA "ONE-CALL SYSTEM INC". NOTICE OF ANY EXCAVATION NO SOONER THAN TEN DAYS OR LATER THAN 72 HOURS (EXCLUDING SATURDAYS, SUNDAYS OR LEGAL HOLIDAYS), PRIOR TO COMMENCEMENT OF WORK. PHONE 1-800-522-6543.
- THE EXISTENCE AND LOCATION OF ANY UNDERGROUND UTILITY PIPES OR STRUCTURES SHOWN ON THESE DRAWINGS ARE OBTAINED BY A SEARCH OF THE AVAILABLE RECORDS. TO THE BEST OF OUR KNOWLEDGE, THERE ARE NO EXISTING UTILITIES EXCEPT AS SHOWN ON THESE DRAWINGS AND WE ASSUME NO RESPONSIBILITY AS TO THE ACCURACY OF THEIR DEPICTED LOCATION ON THESE DRAWINGS. THE CONTRACTOR IS REQUIRED TO TAKE DUE PRECAUTIONARY MEASURES TO PROTECT THE UTILITY LINES SHOWN, AND ALL OTHER LINES NOT OF RECORD OR NOT SHOWN ON THESE DRAWINGS BY VERIFICATION OF THEIR LOCATION IN THE FIELD PRIOR TO THE INITIATION OF THE ACTUAL PORTION OF THEIR WORK
- ALL CONSTRUCTION STAKING SHALL BE PERFORMED BY SCOTT & ASSOCIATES A LICENSED SURVEYOR.
- THE CONTRACTOR SHALL COMPLY WITH ALL APPLICABLE FEDERAL, STATE AND LOCAL LAWS GOVERNING SAFETY, HEALTH, AND SANITATION. THE CONTRACTOR SHALL PROVIDE ALL SAFEGUARDS, SAFETY DEVICES AND PROTECTIVE EQUIPMENT, AND TAKE ANY OTHER NEEDED ACTIONS ON HIS OWN RESPONSIBILITY OR AS THE ENGINEER MANY DETERMINE REASONABLY NECESSARY TO PROTECT PROPERTY IN CONNECTION WITH THE PERFORMANCE OF THE WORK COVERED BY THE CONTRACT. THE CONTRACTOR SHALL COMPLY WITH THE LATEST OSHA REGULATIONS.
- IF ASPHALT PAVING IS USED THEN PAVING OPERATIONS SHALL BE CONSTRUCTED WITH A CONTINUOUS FLOW MATERIAL SUPPLIED TO PROTECT SUCH THAT A LAYDOWN MACHINE WILL REMAIN IN MOTION. ANY DELAY IN FORWARD PROGRESSION OF LAYDOWN MACHINE SHALL REQUIRE TRANSVERSE JOINT AS DIRECTED BY THE ENGINEER.
- CONTRACTOR SHALL COORDINATE ALL CONSTRUCTION WITH THE CNE DIRECTOR OF CONSTRUCTION, KEVIN OGLE 918-384-7735
- CONTRACTOR IS RESPONSIBLE FOR OBTAINING ANY AND ALL PERMITS REQUIRED.
- CONCRETE MEDIAN DIMENSIONS SHALL BE COORDINATED WITH ENGINEER.
- CONTRACTOR SHALL NOT CAUSE ANY INCONVENIENCE TO THE PUBLIC ADJACENT PROPERTY OWNERS. DURING THE CONSTRUCTION OF THIS PROJECT.
- THE CONTRACTOR SHALL CONTACT THE ENGINEER FOR CLARIFICATION IF A DISCREPANCY OR INCONSISTENCY IS IDENTIFIED ON THE PLANS AND/OR SPECIFICATIONS IMMEDIATELY.
- ITEMS INCLUDED IN THIS CONTRACT BUT NOT INCLUDED IN THE ESTIMATE OF QUANTITIES ARE TO BE CONSIDERED INCIDENTAL AND INCLUDED IN THE COST OF ITEMS FOR WHICH THEY AREA A COMPONENT PART.
- THE CONTRACTOR SHALL KEEP ON SITE A CURRENT SET OF THE APPROVED CONSTRUCTION WORKING DRAWINGS AT ALL TIMES. THE CONTRACTOR SHALL MARK (IN RED) ALL APPROVED CHANGES INCURRED FOLLOWING APPROVAL OF THE INITIAL DRAWINGS. THESE CHANGES MAY BE INITIATED FROM FIELD CONDITIONS OR CHANGES MADE BY THE DESIGN ENGINEER. EXCEPT FOR MINOR FIELD ADJUSTMENTS, ALL CHANGES SHALL BE REVIEWED AND AGREED TO BY THE DESIGN ENGINEER PRIOR TO FINAL APPROVAL OF THE PROJECT. THE CONTRACTOR SHALL SUBMIT THE WORKING DRAWINGS TO THE DESIGN ENGINEER AFTER FINAL INSPECTION OF THE PROJECT TO SERVE AS A BASIS FOR DEVELOPMENT OF THE FINAL AS-BUILT RECORD DRAWINGS.
- CONTRACTOR SHALL COMPLY WITH ALL PROVISIONS OF THE APPROVED SW3P.
- CONTRACTOR SHALL COORDINATE AND WORK WITH ALL OTHER CONSTRUCTION ON SITE.
- CONTRACTOR TO SUBMIT CONCRETE SIDEWALK JOINT LAYOUT TO THE ENGINEER FOR APPROVAL. MAX JOINT SPACING SHALL BE 5 FEET.

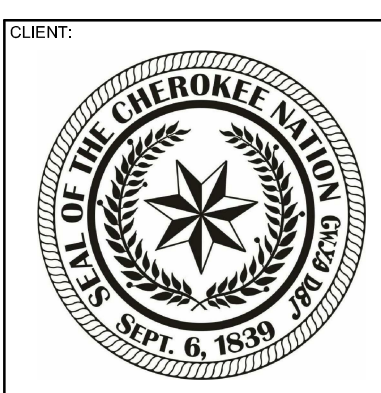
- COST FOR NEW CONCRETE SIDEWALK SHALL INCLUDE ALL SAWING, COMPACTION OF SUBGRADE TO 95% STD. PROCTOR AND TYPE "A" AGGREGATE BASE.
- CONTRACTOR TO PROVIDE 1/2" EXP. MATL. AT BUILDING.
- SEE STANDARD FOR RAMPS.
- USE SAME SECTION FOR MOTORCYCLE PARKING.
- 1/2" EXPANSION JOINTS ARE TO BE INSTALLED AT LEAST EVERY 25'. THEY SHALL ALSO BE INSTALLED BETWEEN THE NEW SIDEWALK AND (A) CURBS, (B) INTERSECTING SIDEWALKS AND DRIVEWAYS, (C) STEPS, (D) RETAINING WALLS, (E) FIXED OBJECTS.
- MAX. SLOPE 2%.
- CONTRACTOR TO LAYOUT SIDEWALK JOINTS & GET APPROVAL FROM OWNER & ENGINEER BEFORE SAW CUTTING BEGINS.
- SAW JOINTS SHALL 1" DEEP SHALL BE CUT AS SOON AS POSSIBLE AFTER MEDIUM BROOM FINISH WORK IS COMPLETE AND CONCRETE HAS CURED TO ACCEPT TYPE OF SAW EQUIPMENT.
- PROPORTION CONCRETE TO PRODUCE A STRENGTH OF 3,500 PSI AT 28 DAYS WITH MINIMUM CEMENT CONTENT OF 5 1/2 SACKS PER CU. YD. AND 5 TO 7 PERCENT ENTRAINED AIR, EXCEPT WHERE OTHERWISE INDICATED ON DRAWINGS. INCLUDE 1 1/2 LBS OF FIBER MESH REINFORCING PER YARD, MAXIMUM SLUMP 4".



James R. Childers Architect, Inc.
314 Lexington Avenue
Fort Smith, AR 72301
479-783-2480
www.childersarchitect.com



CONSULTANT LOGO
J.L. JOHNSON, P.E.
NATIVE AMERICAN CONSULTING ENGINEERS
(918) 304-4554 (jrobert@nace.com)
Rt. 1, Box 410, Haskell, OK 74436



**CHEROKEE NATION ENTERTAINMENT
FORT GIBSON CASINO**
FORT GIBSON, OKLAHOMA

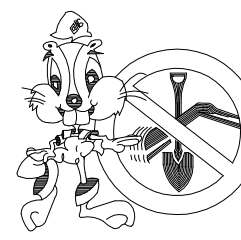
PROJECT PHASE:
AS-BUILT DRAWINGS

REVISIONS	
#	DESCRIPTION

DATE: 10-03-11
JOB NUMBER: 08-07

SHEET NUMBER:
C301

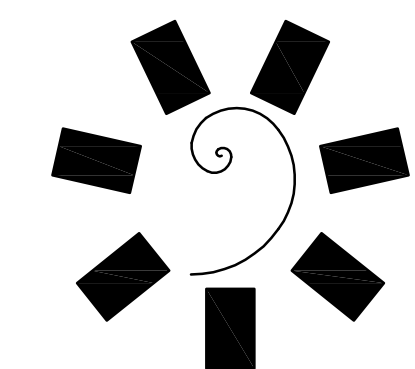
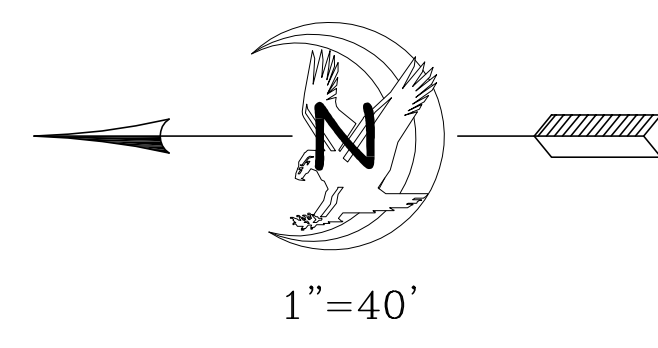
TYPICAL SECTIONS,
NOTES & DETAILS



811
BEFORE YOU DIG ...
1-800-582-6543
CALL OKIE

LOCATIONS OF UNDERGROUND UTILITIES WERE OBTAINED FROM THE UTILITY OWNERS. BEFORE DOING ANY WORK WITH HEAVY EQUIPMENT, THE CONTRACTOR SHALL NOTIFY THE UTILITY OWNERS OR "CALL OKIE (OKLAHOMA ONE-CALL)" NOT LESS THAN 48 HOURS IN ADVANCE AND SHALL ESTABLISH THE EXACT LOCATION AND DEPTH OF ALL UNDERGROUND UTILITIES.

EXHIBIT 'A'



James R. Childers Architect, Inc.
314 Lexington Avenue
Fort Smith, AR 72301
479-783-2480
www.childersarchitect.com



CONSULTANT LOGO
J.L. JOHNSON, P.E.
NATIVE AMERICAN CONSULTING ENGINEERS
(918) 304-4554 jjohnson@naec.com
Rt. 1, Box 410, Haskell, OK 74436

CLIENT:
CHEROKEE NATION ENTERTAINMENT
FORT GIBSON CASINO
FORT GIBSON, OKLAHOMA

**CHEROKEE NATION ENTERTAINMENT
FORT GIBSON CASINO**
FORT GIBSON, OKLAHOMA

PROJECT PHASE:
AS-BUILT DRAWINGS

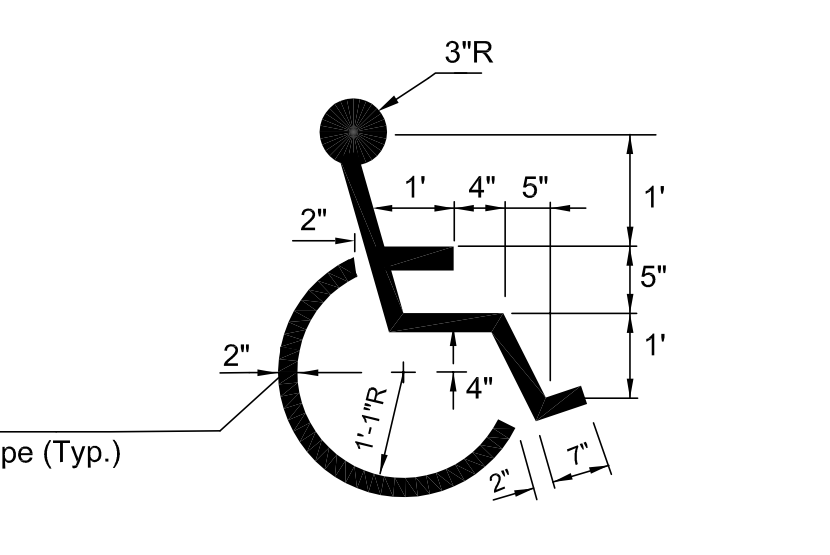
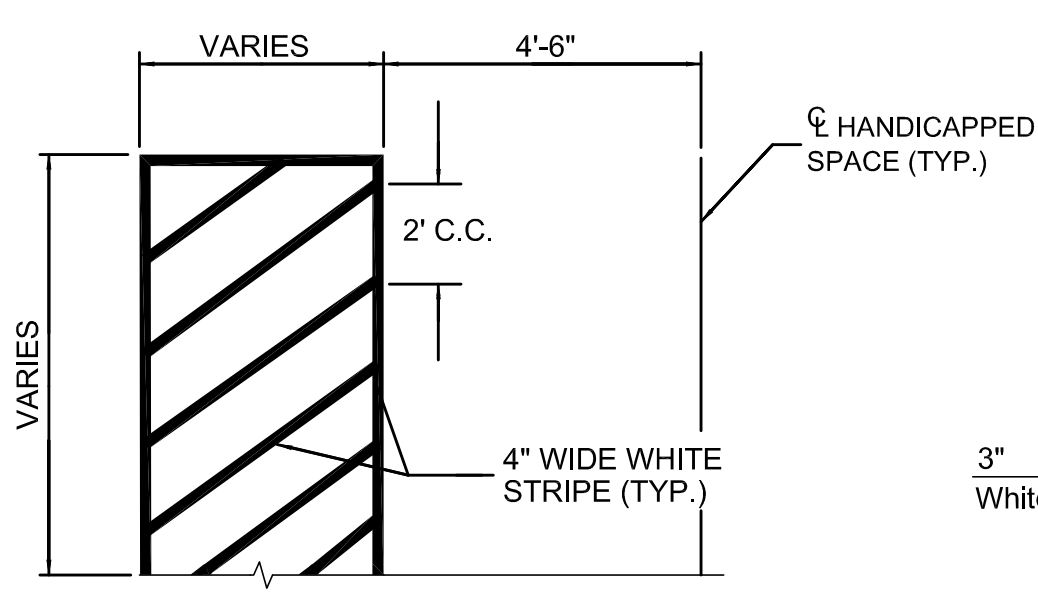
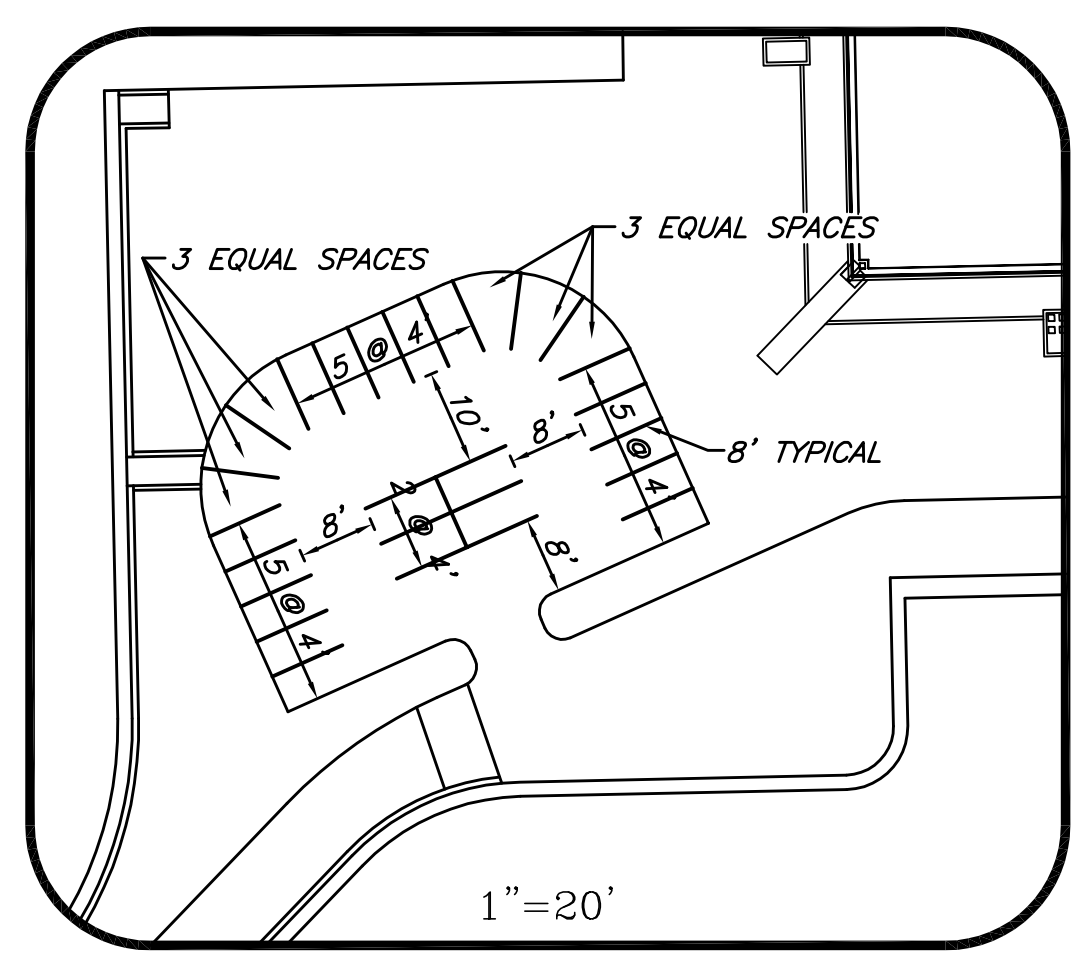
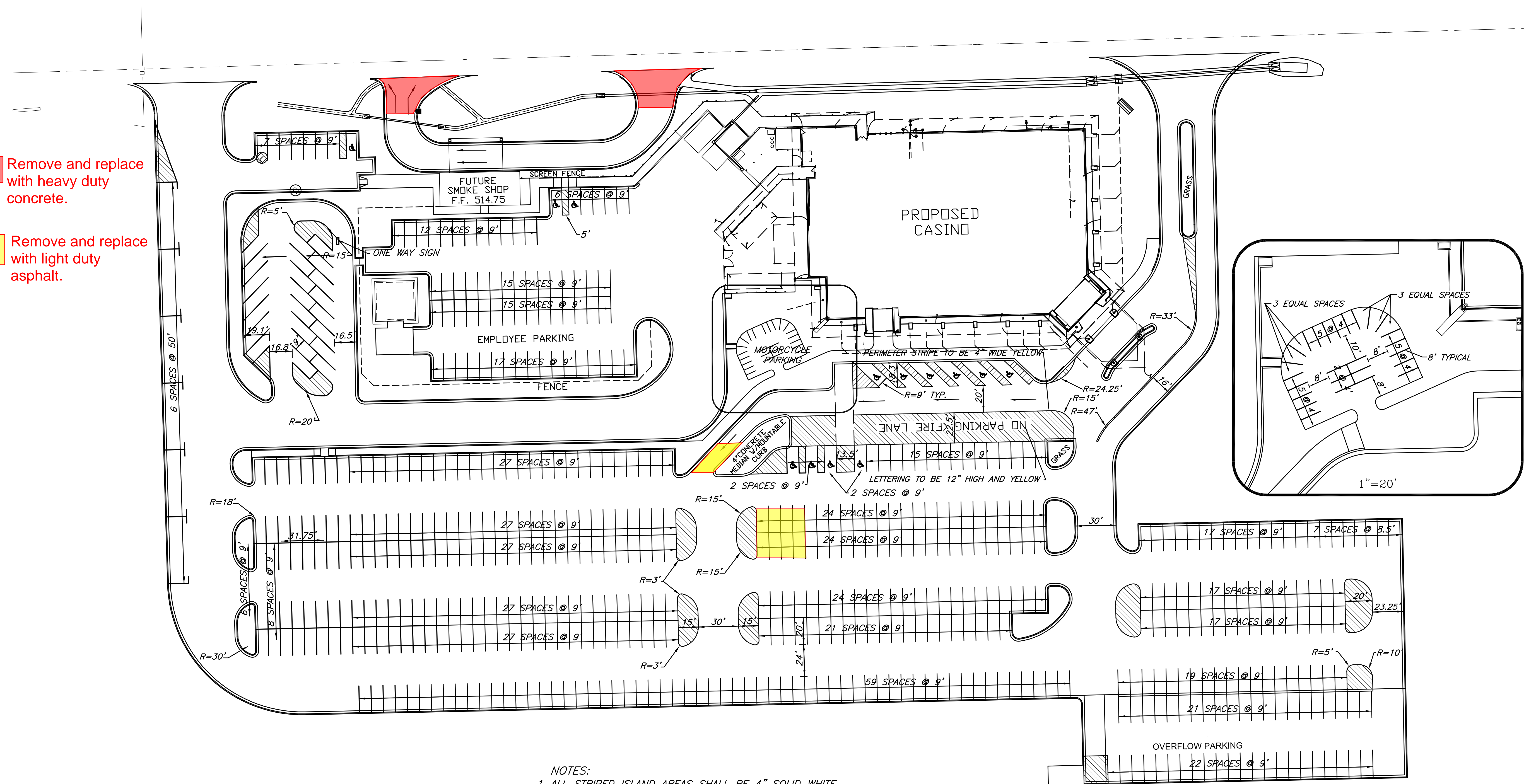
REVISIONS	
#	DESCRIPTION
1	REVISED S.W. PARKING

DATE: 10-03-11
JOB NUMBER: 08-07

SHEET NUMBER:
C307

STRIPING PLAN

- Remove and replace with heavy duty concrete.
- Remove and replace with light duty asphalt.



- NOTES:
- ALL STRIPED ISLAND AREAS SHALL BE 4" SOLID WHITE LINES SPACED @ 3' APART AT 45° FROM EDGE OF MARKINGS.
 - UNLESS OTHERWISE SPECIFIED ALL STRIPING SHALL BE 4" SOLID WHITE LINES.
 - ALL PAVEMENT ARROW MARKINGS SHALL BE MADE IN ACCORDANCE WITH THE 2009 ODOT STANDARD DRAWING PM6-1-00

8 HANDICAP SPACES
2 HANDICAP SPACES (VAN)
47 EMPLOYEE (EXCLUDING 2 HANDICAP)
383 ASPHALT SPACES
440 TOTAL CAR PARKING
7 25' SPACES (RV / TRUCK PARKING)

