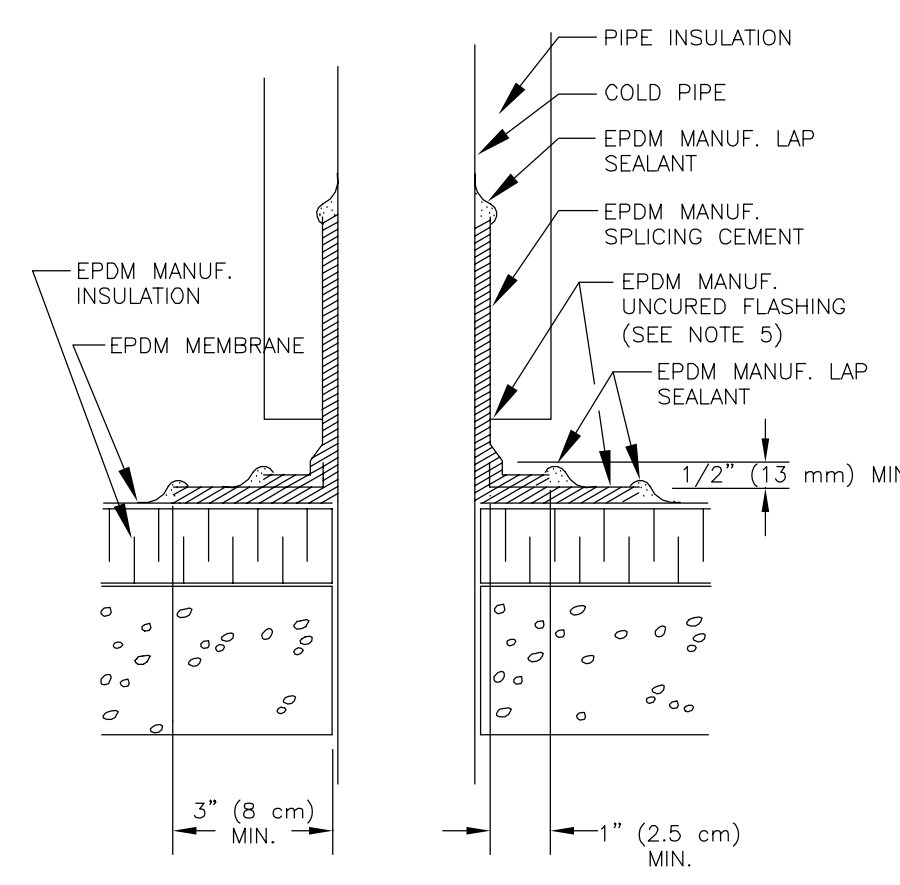
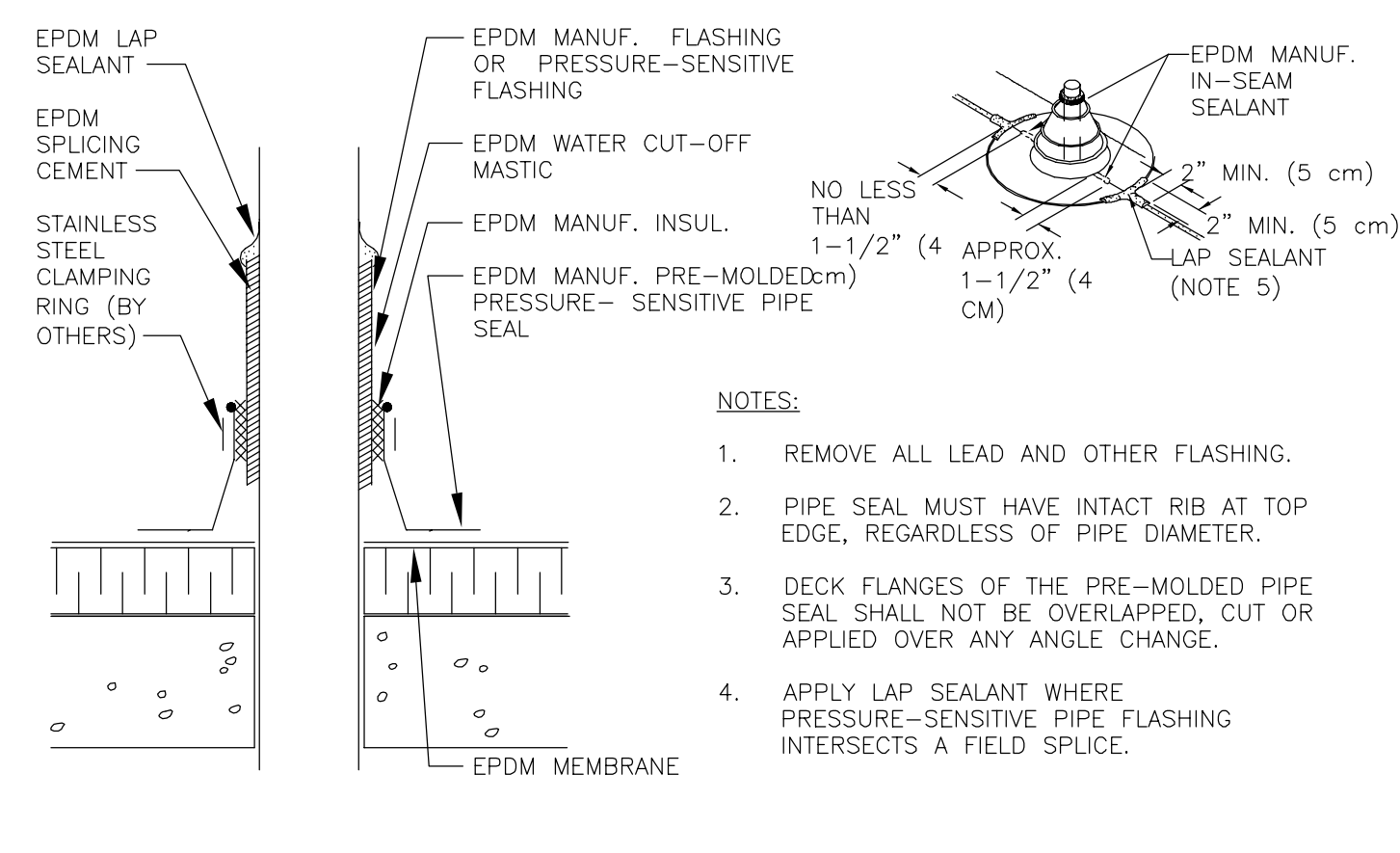


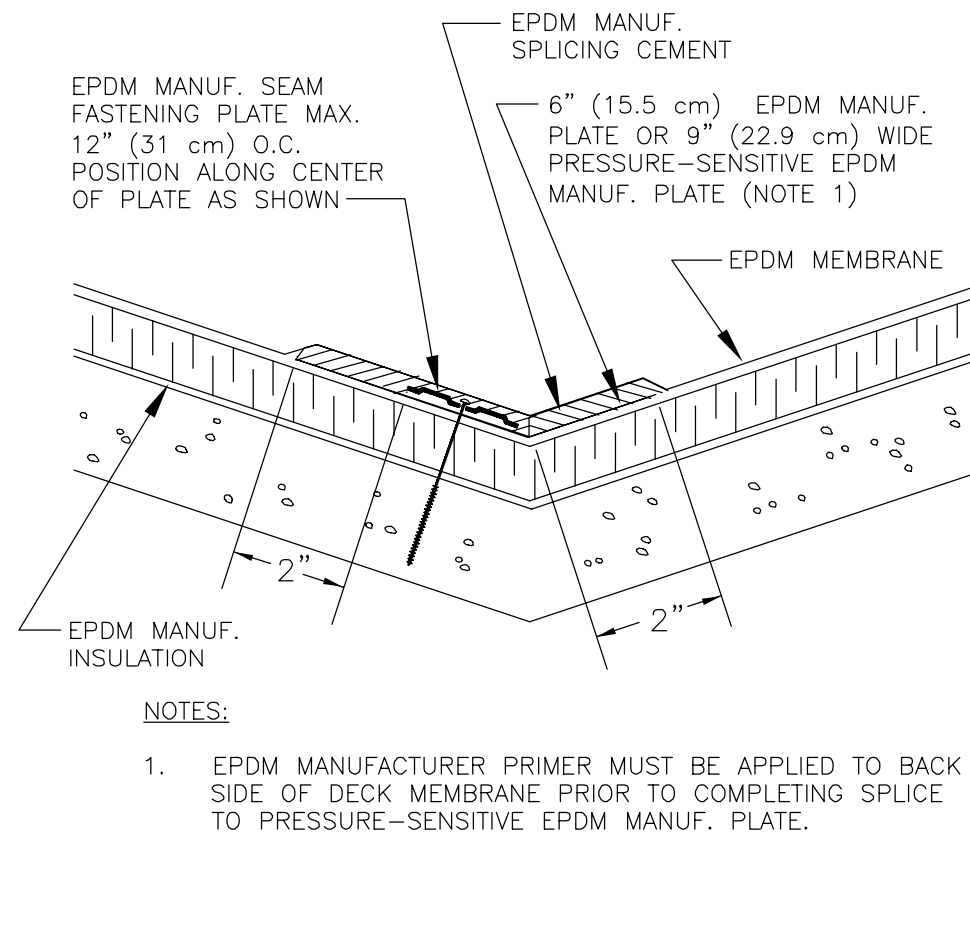
**1 VENT PIPE PRE-MOLDED**



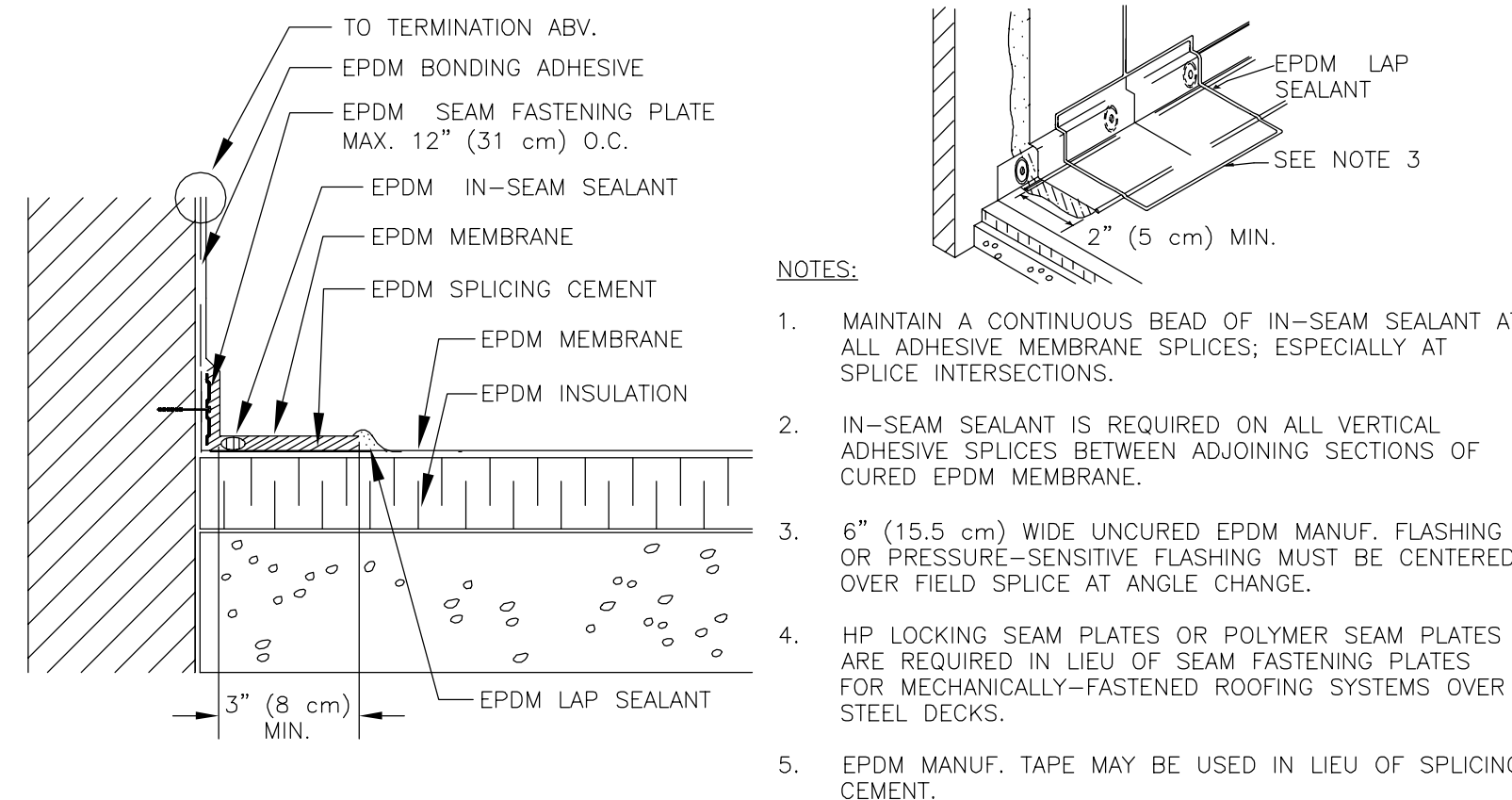
**2 PIPE SEAL: FIELD FABRICATED**



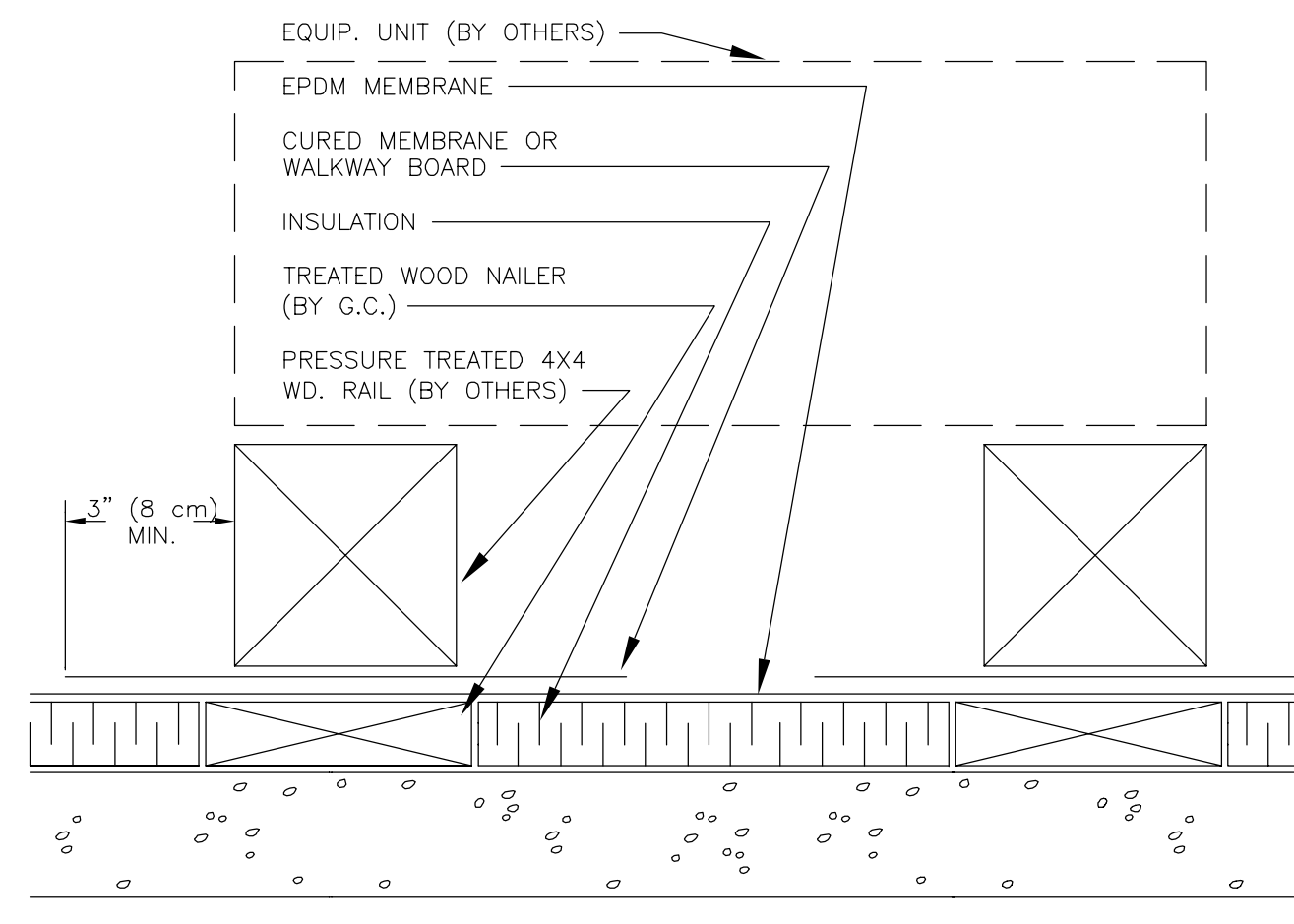
**3 PIPE SEAL: PRE-MOLDED**



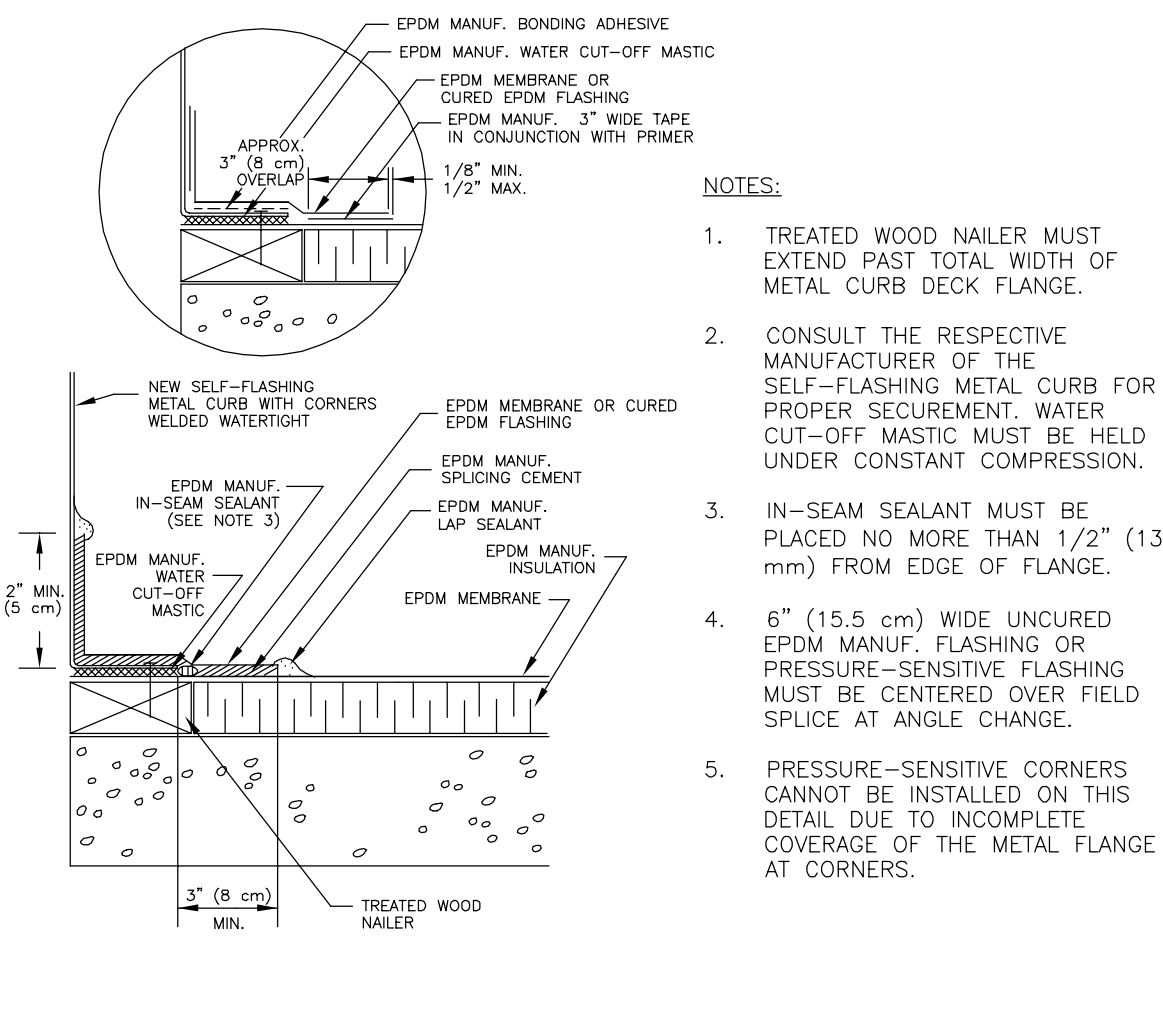
**4 VALLEY**



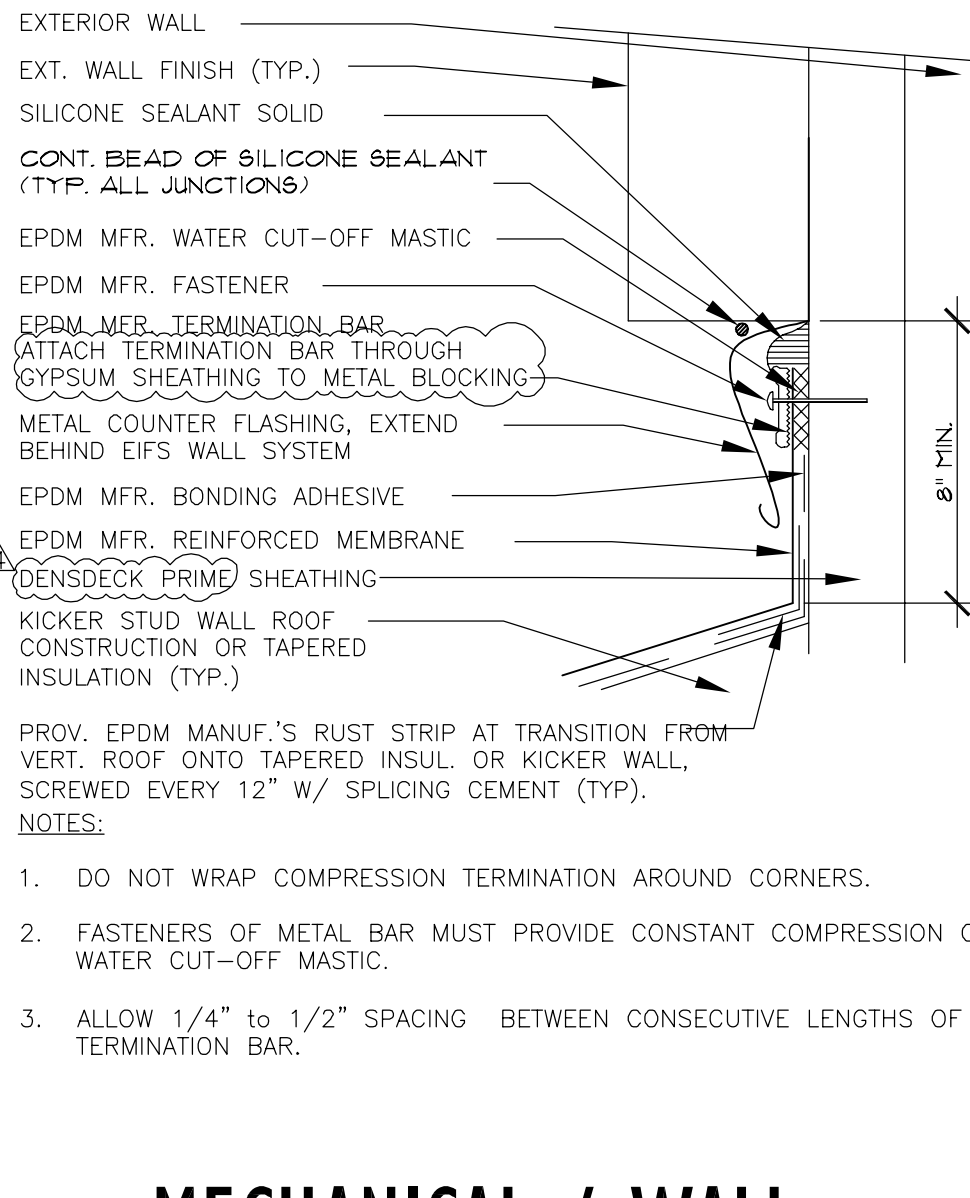
**5 PARAPET**



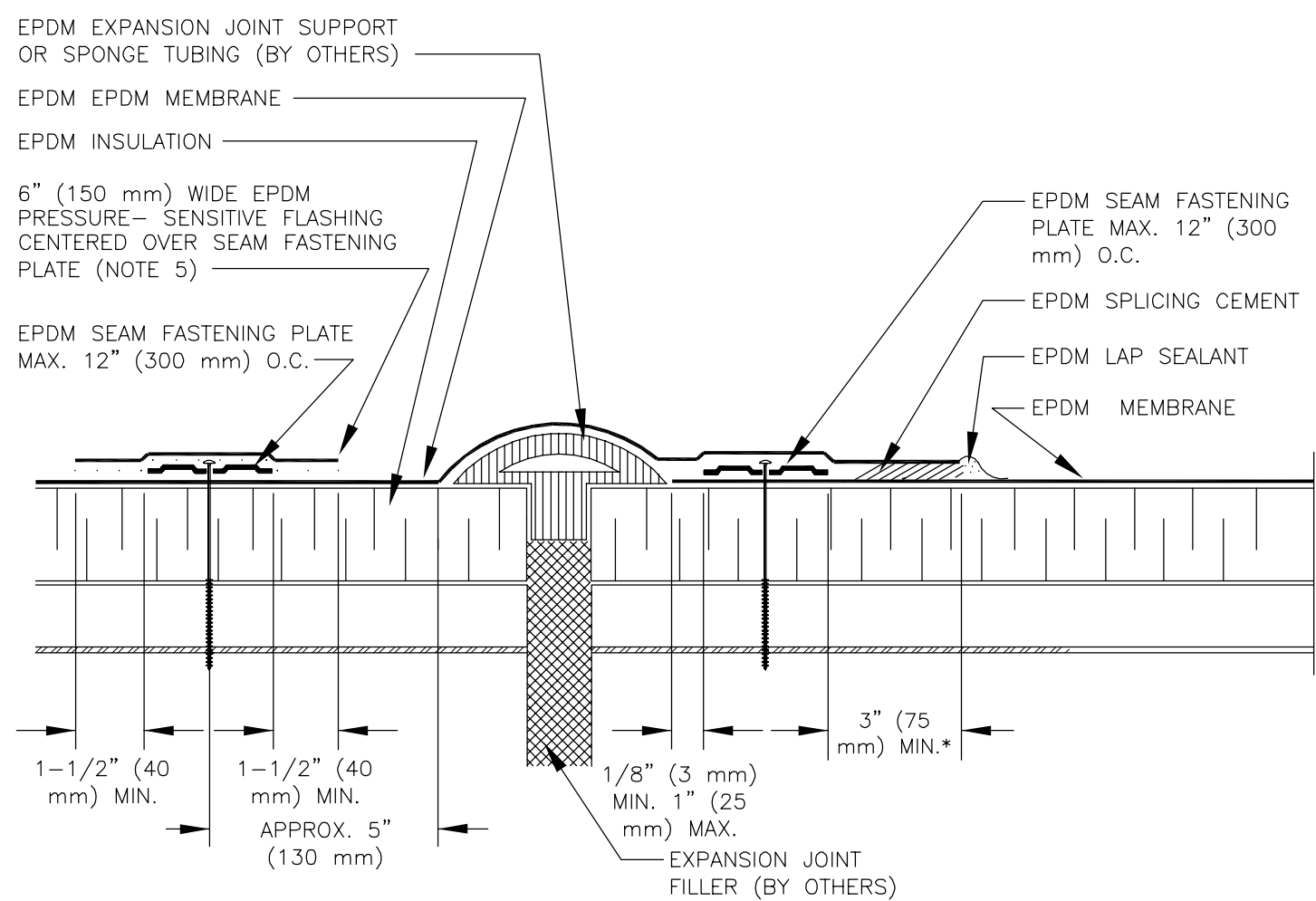
**6 EQUIPMENT RAIL**



**7 RTU CURB: SELF-FLASHING**

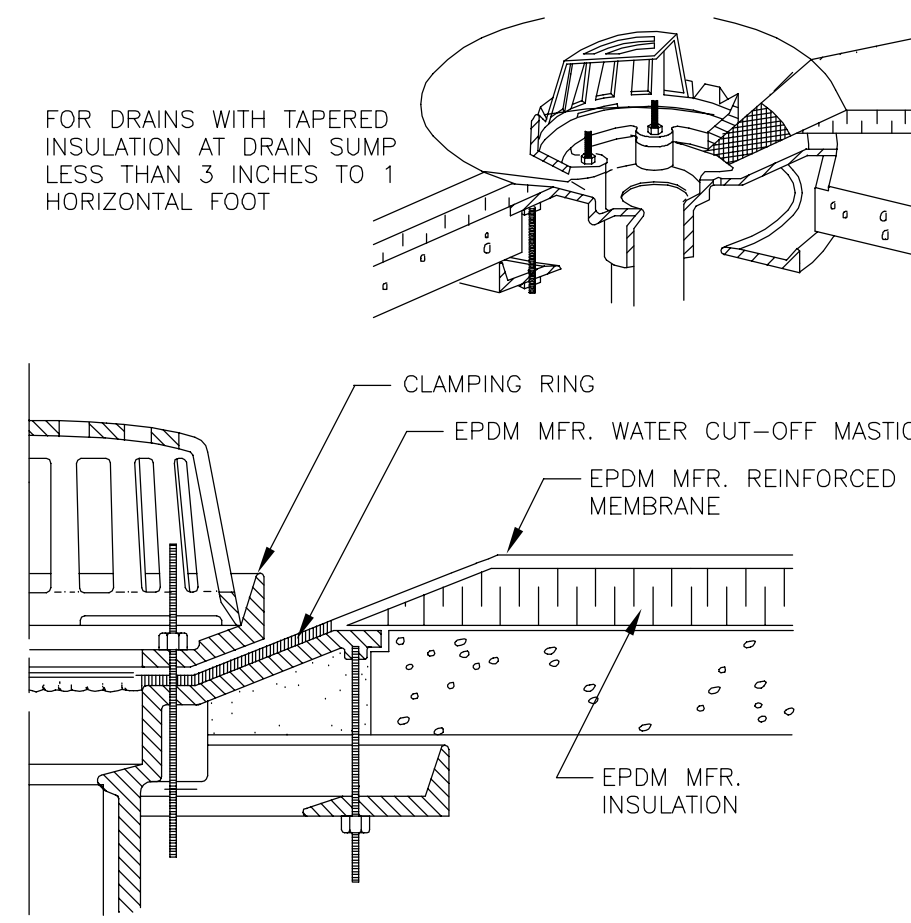


**8 MECHANICAL / WALL TERMINATION**

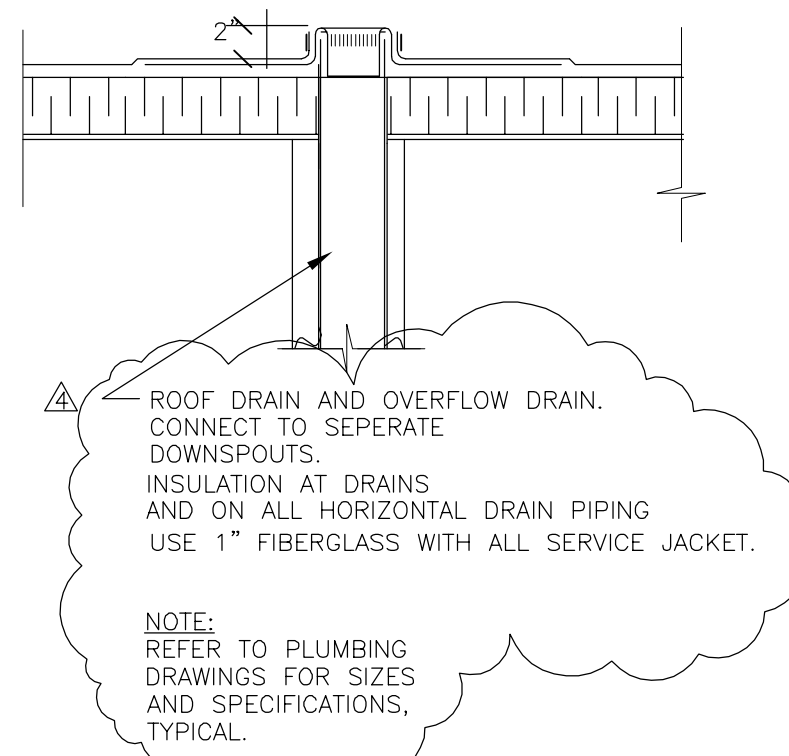


**9 EXPANSION JOINT**

- NOTES:**
- FOR EXPANSION JOINT INTERSECTIONS AND INTERSECTIONS BETWEEN EXPANSION JOINTS TO WALL OR EDGING, USE 3 LAYERS OF UNCURED EPDM FLASHING WITH EACH LAYER 3 INCHES (75 mm) LARGER THAN PREVIOUS LAYER IN ALL DIRECTIONS.
  - WIDTH OF JOINT SHALL BE A MINIMUM OF 3/4 INCHES (19mm) AND SHALL NOT EXCEED 3 INCHES (75 mm).
  - POLYMER SEAM PLATES ARE REQUIRED IN LIEU OF SEAM FASTENING PLATES FOR MECHANICALLY-FASTENED ROOFING SYSTEMS OVER STEEL DECKS.
  - EPDM PRIMER MUST BE APPLIED TO MEMBRANE SURFACE PRIOR TO APPLYING PRESSURE-SENSITIVE FLASHING.
  - LAP SEALANT MUST BE APPLIED ALONG PRESSURE-SENSITIVE FLASHING AND SPLICING CEMENT AT INTERSECTIONS WITH FIELD SPLICES AND FLASHING OVERLAPS AS SHOWN ABOVE.
  - DETAIL APPLIES FOR STEEL DECKS WHEN DECK SLOPE IS LEVEL OR IS TOWARD EPDM ROOFING SYSTEM.
  - DRILL A 3/8" (10mm) DIAMETER WEEP HOLE ON THE BOTTOM FLUTES OF STEEL DECK ALONG THE PERIMETER TO THE TIE-IN 6" (150mm) MINIMUM TO 12" (300mm) MAXIMUM FROM THE SEAM FASTENING PLATE.
  - POLYMER SEAM PLATES ARE REQUIRED IN LIEU OF SEAM FASTENING PLATES FOR MECHANICALLY FASTENED ROOFING SYSTEMS OVER STEEL DECKS.



**10 ROOF DRAIN**

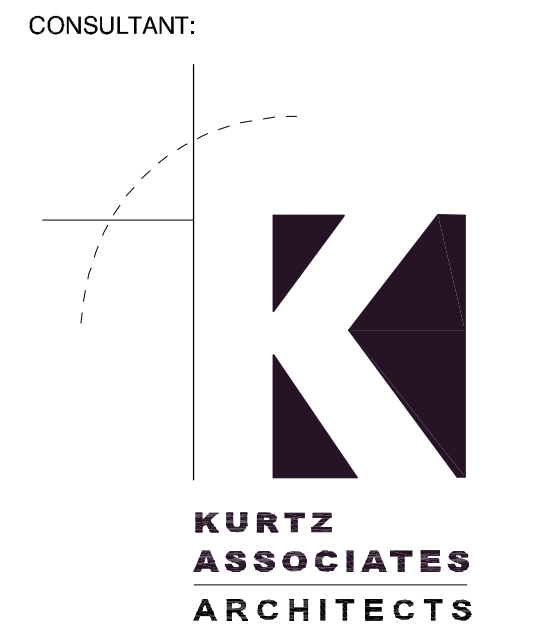


**11 ROOF OVERFLOW DRAIN**



ARCHITECT:  
**Thalden • Boyd Architects**  
*A Native American Firm*  
 16 East 16th Street, Suite 500  
 Tulsa, Oklahoma 74119  
 (918) 587-7445  
 St. Louis, MO Las Vegas, NV

THALDEN BOYD ARCHITECTS, LLC  
 COPYRIGHT 2006



701 Lee Street  
 Suite 900  
 Des Plaines, Illinois  
 60016-4551  
 V 847 824 0132  
 F 847 824 7906  
 www.kurtzarch.com

SEAL:

REVISIONS:

1	JL	3-15-06	REVISION
2	JL	3-10-06	REVISION
3	JL	2-27-06	REVISION
4	JL	1-30-06	PRE-BID ADDENDUM

NO. BY DATE

TITLE:  
**EPDM ROOF DETAILS**

PROJECT NO.: 5409.00  
 DATE: 1/9/06  
 SCALE: AS SHOWN

BID ISSUE  
 DRAWING NO.  
**A501**